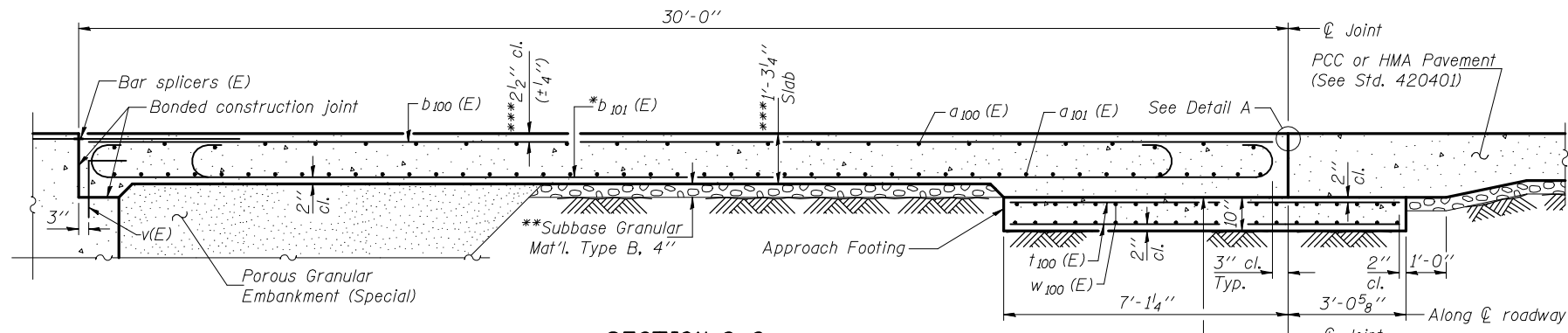


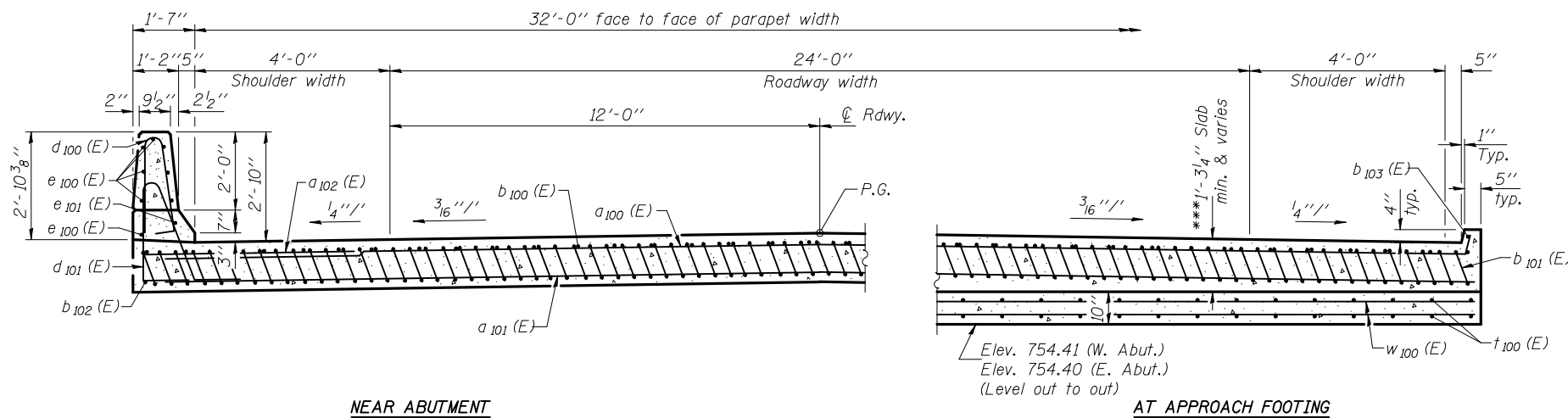
STATE OF ILLINOIS
DEPARTMENT OF TRANSPORTATION

Notes:

See sheet 11 of 25 for Detail A and View B-B.
Approach slab and parapet concrete shall be paid for as Concrete Superstructure.
Approach footing concrete shall be paid for as Concrete Structures.
Reinforcement shall be paid for as Reinforcement Bars, Epoxy Coated.
For v(E) bar details, see sheet 9 of 25.
The approach footing maximum applied service bearing pressure (Qmax) = 2.0 ksf.
For bar splicer details, see sheet 21 of 25.
Cost of excavation for approach footing included with Concrete Structures.
For Porous Granular Embankment (Special) and drainage treatment details, see sheet 2 of 25.



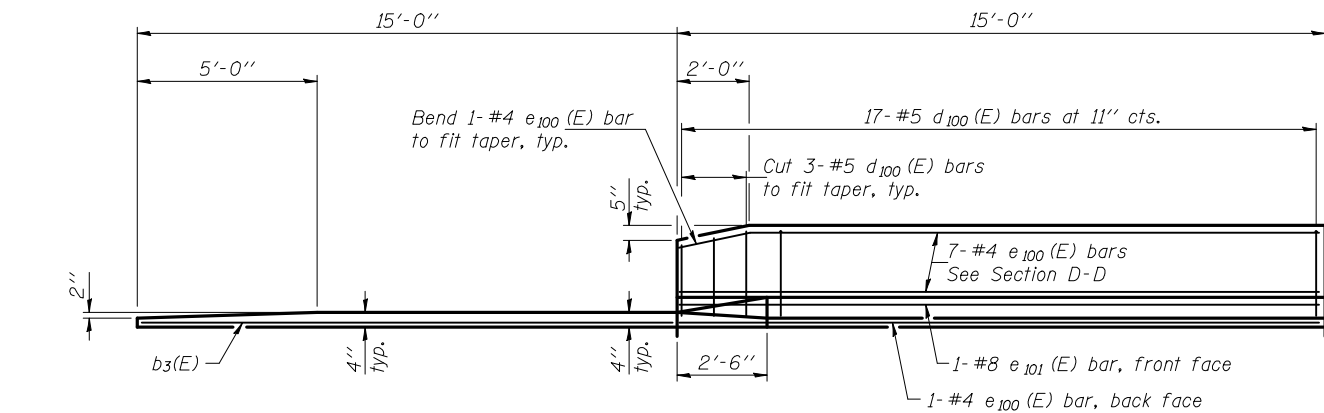
SECTION C-C



NEAR ABUTMENT

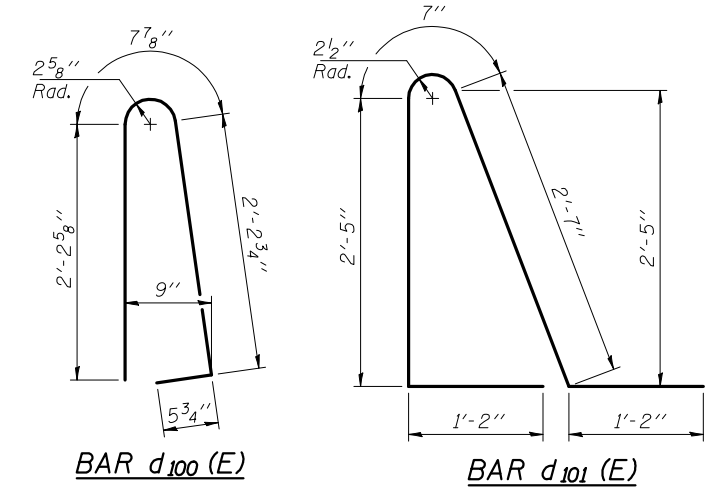
SECTION D-D
(See Plan for dimensions not shown)

AT APPROACH FOOTING



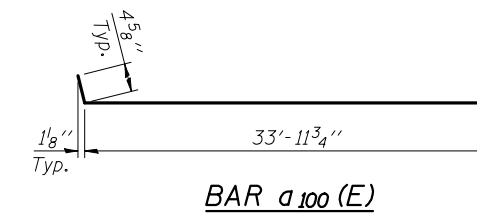
VIEW E-E

*Tilt #9 b101 (E) bars as required to maintain clearance.
**Cost included with Concrete Superstructure.
***Prior to grinding.

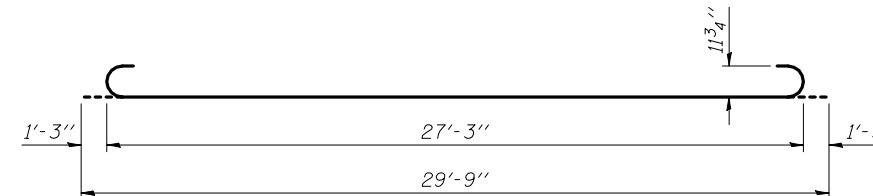


TWO APPROACHES
BILL OF MATERIAL

Bar	No.	Size	Length	Shape
a100 (E)	50	#4	34'-9"	—
a101 (E)	92	#5	34'-0"	—
a102 (E)	48	#6	6'-0"	—
b100 (E)	68	#4	29'-8"	—
b101 (E)	160	#9	29'-9"	—
b102 (E)	4	#4	14'-8"	—
b103 (E)	4	#4	14'-9"	—
d100 (E)	68	#5	5'-7"	U
d101 (E)	68	#5	7'-11"	U
e100 (E)	32	#4	14'-8"	—
e101 (E)	4	#8	14'-8"	—
t100 (E)	136	#4	9'-10"	—
w100 (E)	80	#5	34'-0"	—
Concrete Superstructure		Cu. Yd.	109.3	
Concrete Structures		Cu. Yd.	21.2	
Reinforcement Bars, Epoxy Coated		Pound	27620	



BAR a100 (E)



BAR b101 (E)

DESIGNED	D.P. Narielwala
CHECKED	S.M. Ryan
DRAWN	h.t. duong
CHECKED	DPN/SMR

EXAMINED	November 25, 2009
PASSED	Thomas J. Domagala ENGINEER OF BRIDGE DESIGN
	Ralph E. Anderson ENGINEER OF BRIDGES AND STRUCTURES

BRIDGE APPROACH SLAB DETAILS
STRUCTURE NO. 074-0086

SHEET NO. 12 25 SHEETS	F.A.S. RTE.	SECTION	COUNTY	TOTAL SHEETS	SHEET NO.
	1517	12VBR-1	PIATT	168	97
			CONTRACT NO. 70388		
FED. ROAD DIST. NO. _ ILLINOIS FED. AID PROJECT					