

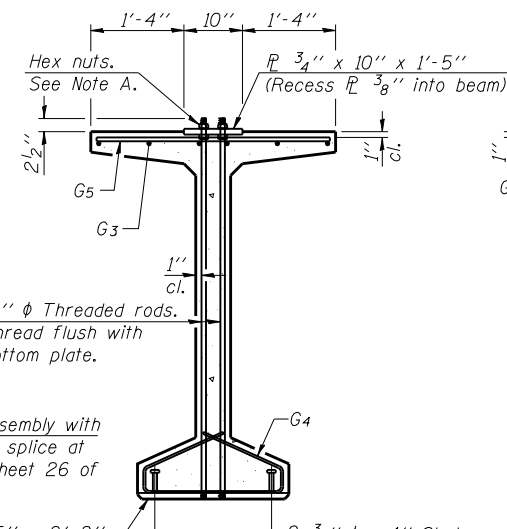
ELEVATION OF BEAM
(Showing reinforcement & dimensions)

* 4 spaces at 3'¹/₄" = 1'-1".
** 5-3'³/₄" ϕ threaded dowel rods at 3'¹/₄" cts., each face.

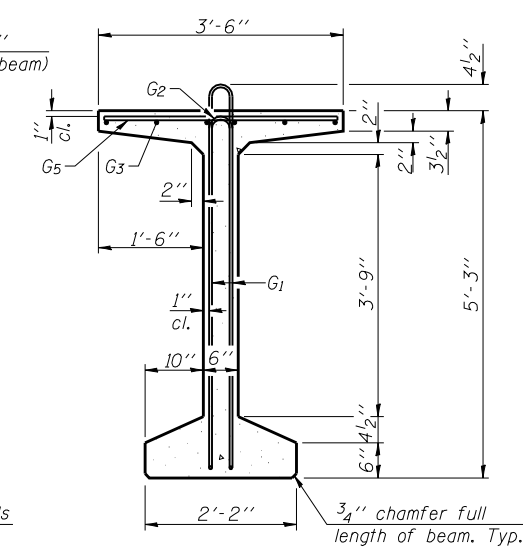
Note A:
Hex nuts (top and bottom) with lock washers (top). Only tighten sufficiently to compress lock washers.

3-#8 G6 bar assembly with threaded coupler splice at pier only. (See sheet 26 of 36 for details).

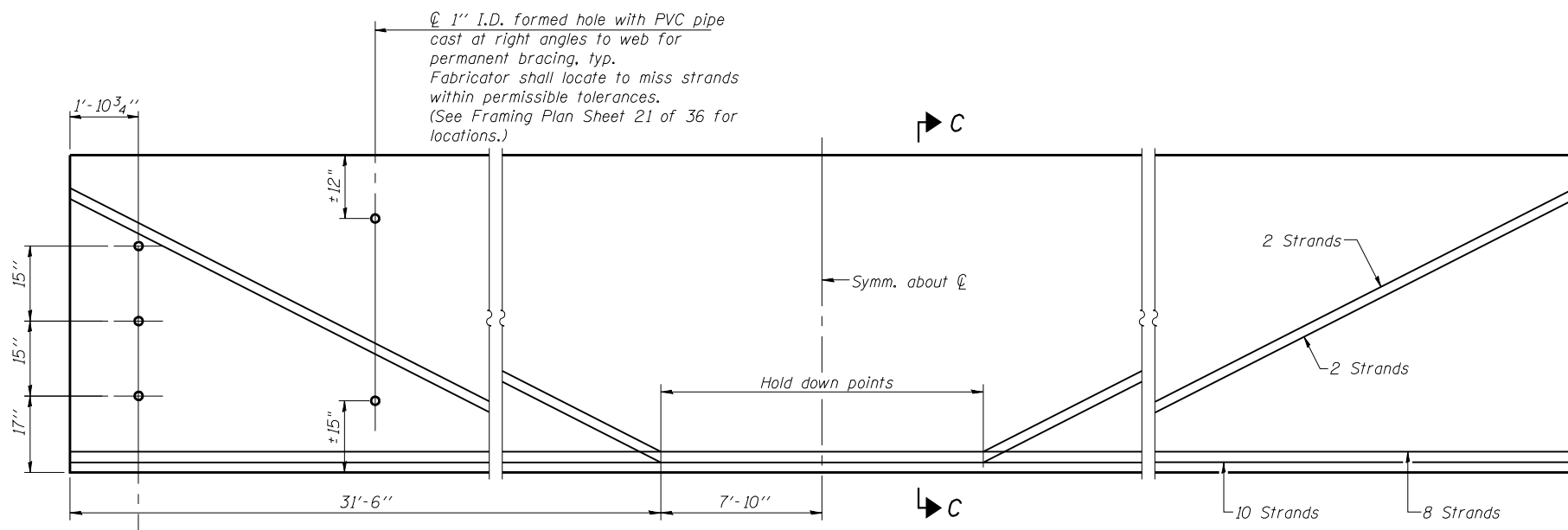
1" x 1'-5" x 2'-2" (Bevel to match chamfer).
3/4" ϕ x 4" Stud automatically end welded. (Space to miss strands).



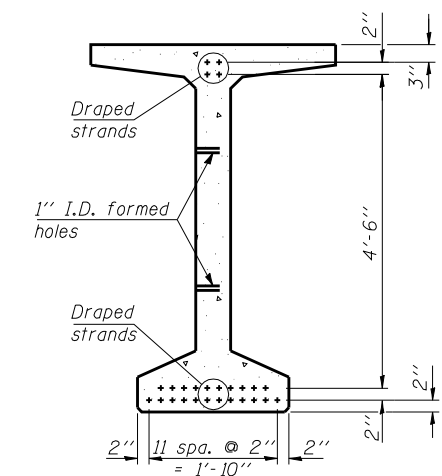
SECTION A-A



SECTION B-B



ELEVATION OF BEAM
(Showing prestressing steel)



SECTION C-C

*****BAR LIST
ONE BEAM ONLY**

Bar	No.	Size	Length	Shape
G ₁	131	#4	11'-11"	\cap L
G ₂	16	#4	10'-2"	\cap
G ₃	18	#6	28'-0"	—
G ₄	56	#3	4'-11"	\cap
G ₅	105	#5	3'-4"	—
G ₆	3	#8	6'-6"	U

***For information only

Notes:
See sheet 26 of 36 for additional details and Bill of Material.
Required release strength, f'_{ci} , shall be 6,000 psi.

**63" PPC BULB T-BEAM SPAN 1
STRUCTURE NO. 010-0287**

<p>Coombe-Bloxdorf P.C. - CIVIL ENGINEERS - - STRUCTURAL ENGINEERS - - LAND SURVEYORS - Design Firm License No. 184-002703</p>	PROJECT NO. 06027-3 SCALE DATE 9/24/09 DESIGN BY DRAWN BY TFG CHECKED BY MCB	SHEET NO. 22 36 SHEETS	F.A.P. RTE. 326 SECTION (137BR)BR COUNTY CHAMPAIGN SN 010-0287 CONTRACT NO. 70428	TOTAL SHEETS 75 SHEET NO. 42
	FED. ROAD DIST. NO. 7 ILLINOIS FED. AID PROJECT			