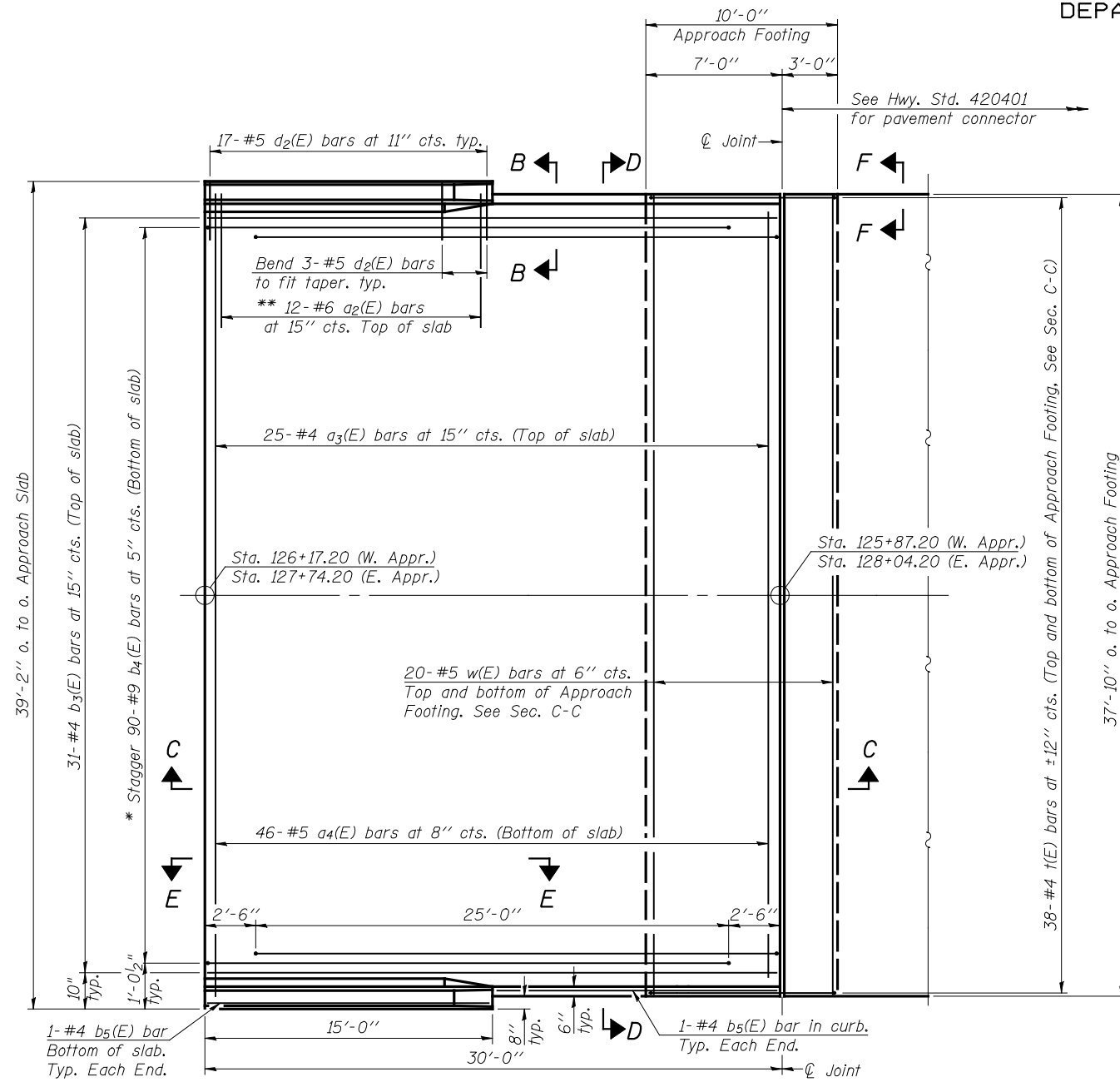
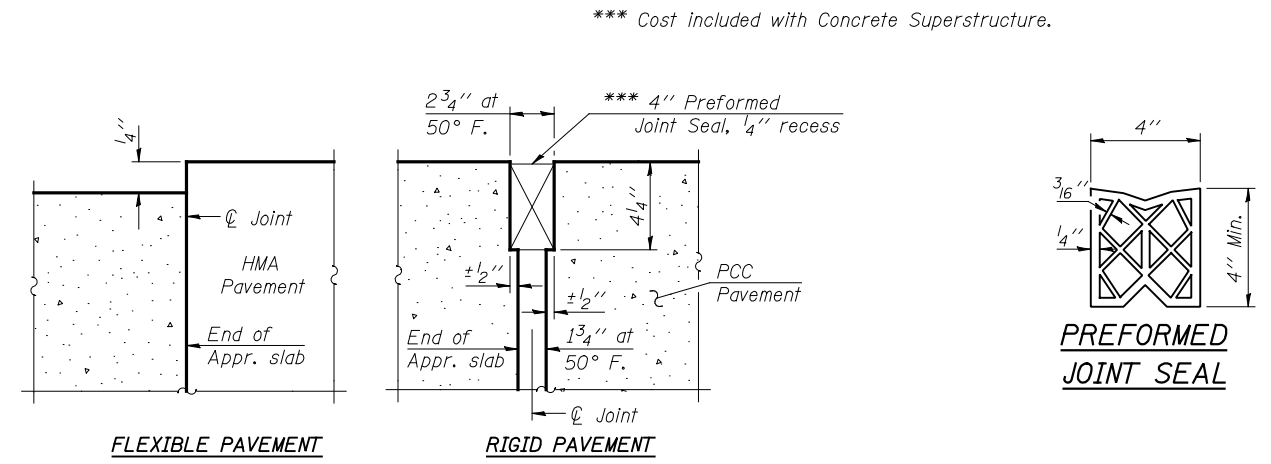


STATE OF ILLINOIS
DEPARTMENT OF TRANSPORTATION

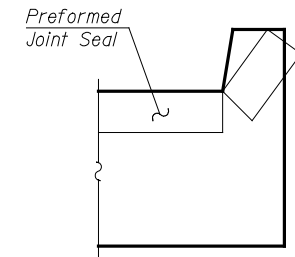
Notes:
See sheet 9 of 17 for Sections C-C & D-D and View E-E.
 $a_3(E)$, $a_4(E)$, and $w(E)$ bar spacings measured perpendicular to C Rdwy.



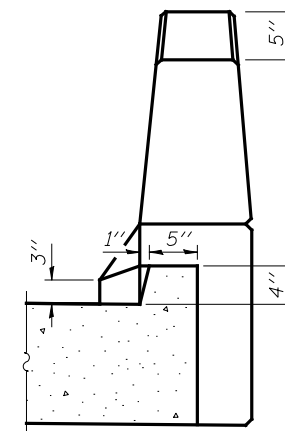
* Tilt #9 $b_4(E)$ bars as required to maintain clearance.
** Alternate with $a_3(E)$ bars, typ. ea. parapet.



PREFORMED JOINT SEAL



Angle Preformed Joint Seal at 45° at curbs when req'd for drainage.



<p>McDonough-Whitlow, P.C. Consulting Engineers & Land Surveyors 138 East Wood Street Hillboro, IL 62049 Phone: 217.332.9233 Fax: 217.332.6300 PROFESSIONAL DESIGNER No. 184-002754</p>	
DESIGNED: CMF	DRAWN: RNH
CHECKED: TMM	CHECKED: TMM

(Sheet 1 of 2)
BRIDGE APPROACH SLAB DETAILS
U.S. 136 OVER
PRAIRIE CREEK
STRUCTURE NO. 057-0245

SHEET 8 OF 17	F.A.P. RTE. 315	SECTION 120BR-1	COUNTY MCLEAN	TOTAL SHEETS 49	SHEET NO. 19
	STA. 126+95.70			CONTRACT NO. 70524	
FED. ROAD DIST. NO.		ILLINOIS FED. AID PROJECT			