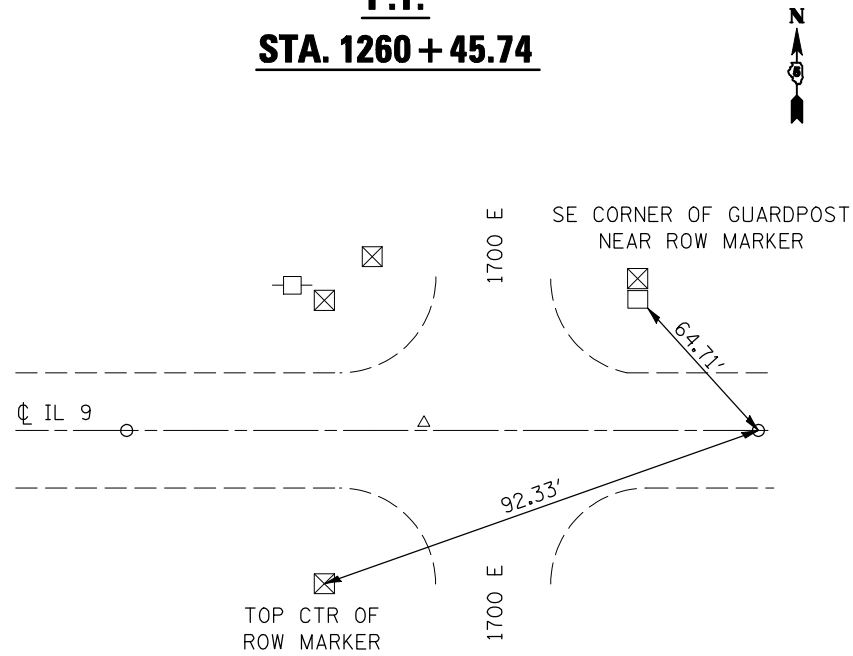
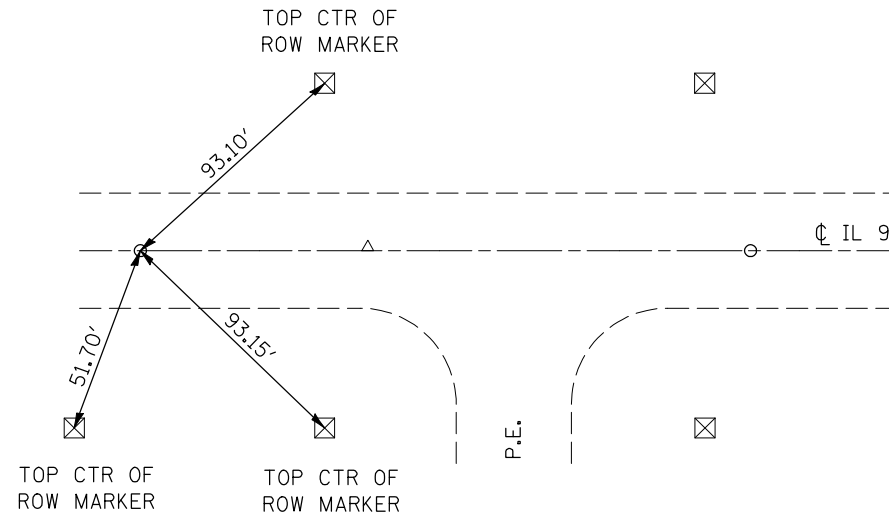


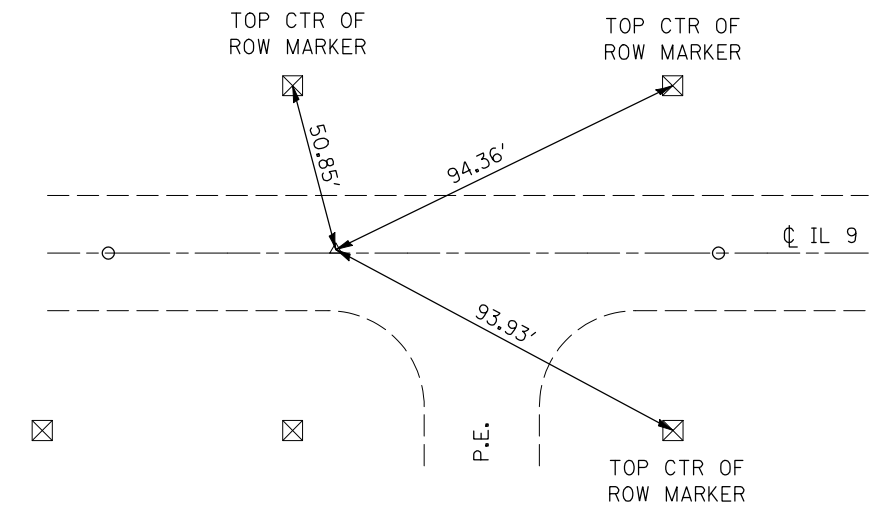
P.T.
STA. 1260 + 45.74



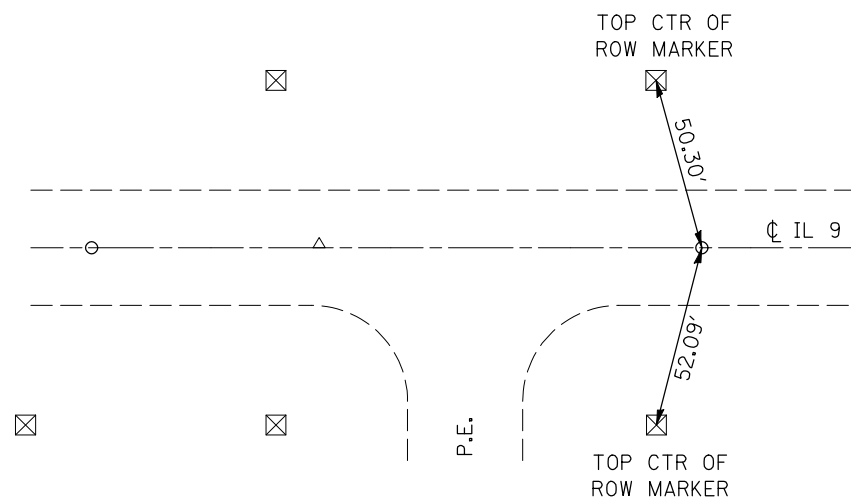
P.C.
STA. 1272 + 36.95



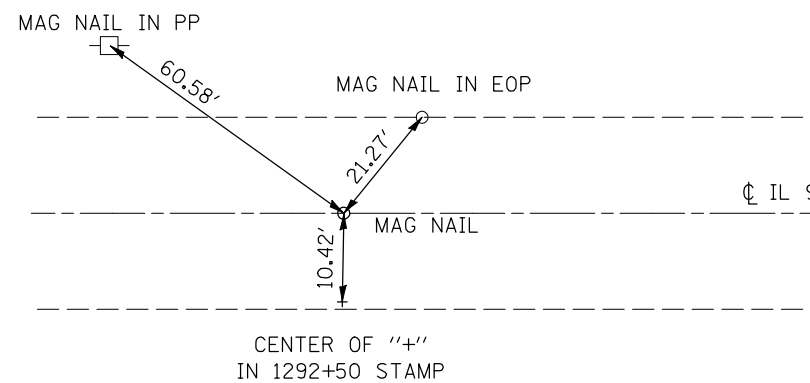
P.I.
STA. 1273 + 29.19, 0.565' LT



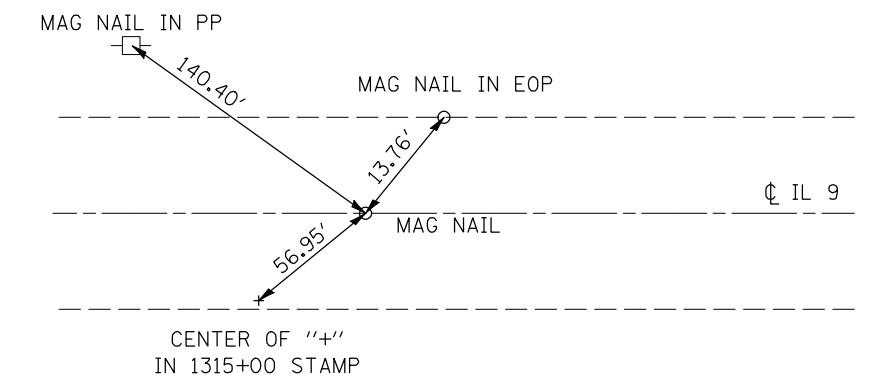
P.T.
STA. 1274 + 21.42



P.O.T.
STA. 1292 + 49.80



P.O.T.
STA. 1315 + 56.56



FILE NAME =	USER NAME = ceorlockjd	DESIGNED -	REVISED -
ce:\pwork\pwidot\cearlockjd\0132042\570594-sht-details.dgn		DRAWN -	REVISED -
PLOT SCALE = 40.0000' / IN.		CHECKED -	REVISED -
PLOT DATE = 10/19/2009		DATE -	REVISED -

**STATE OF ILLINOIS
DEPARTMENT OF TRANSPORTATION**

TIE POINTS			
SCALE:	SHEET NO.	OF SHEETS	STA. TO STA.

F.A.P. RTE.	SECTION	COUNTY	TOTAL SHEETS	SHEET NO.
697	46BR	Vermillion	31	7
ILLINOIS FED. AID PROJECT			CONTRACT NO. 70594	