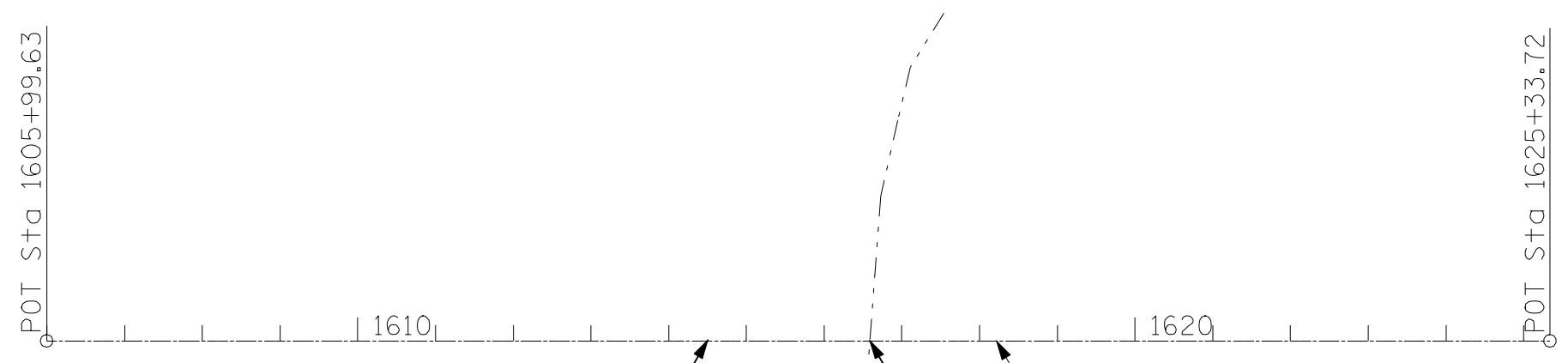
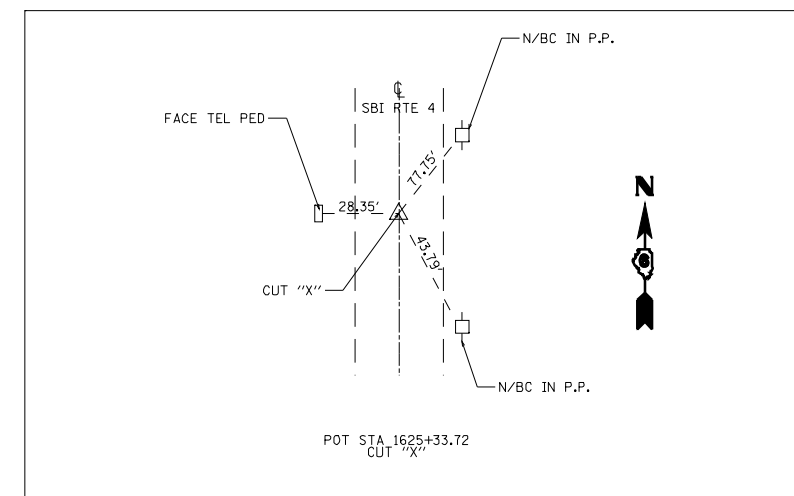
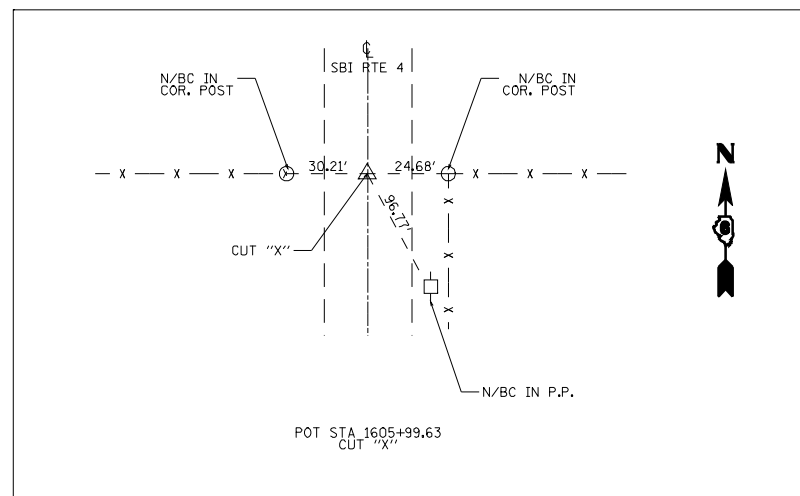


F.A.D. RTE.	SECTION	COUNTY	TOTAL SHEETS	SHEET NO.
SBI4	(L-15D) B	MACOUPIN	21	10
STA. 1605+99.63		TO STA. 1625+33.72		
FED. ROAD DIST. NO. 6		ILLINOIS	FED. AID PROJECT	



PROJECT BEGINS
STA. 1614+50

PROJECT ENDS
STA. 1618+81.33

SHEARLES BRANCH TRIB.
SEC. (L-15D)B
SN 059-0046 (EXIST.)
SN 059-0502 (PROP.)
STA. 1616+70



REVISIONS	
NAME	DATE

ILLINOIS DEPARTMENT OF TRANSPORTATION
ALIGNMENT, TIES AND BENCHMARKS

SCALE: 1"=100'
DATE: _____
DRAWN BY: PRL
CHECKED BY: JDR

BM # RCL 9: ELEV = 648.64; CUT "□" IN S.E. CORNER OF WEST HEADWALL @ STRUCTURE # 059-0046
BM # 2: ELEV = 645.02; CHSLD "□" ON NE WING WALL STRUCTURE # 059-0046