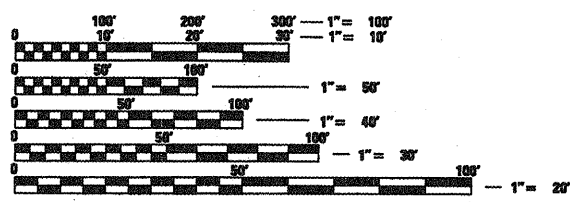
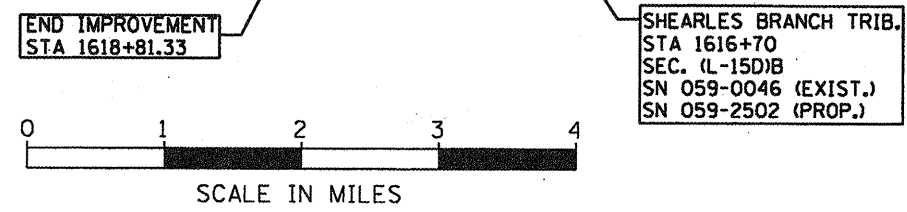
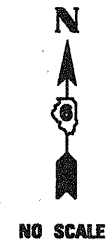
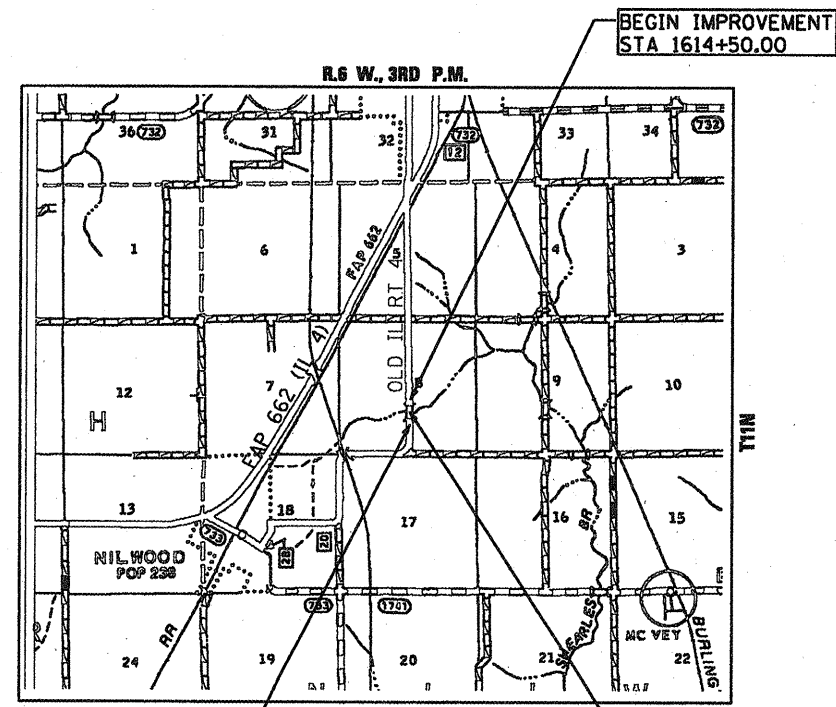
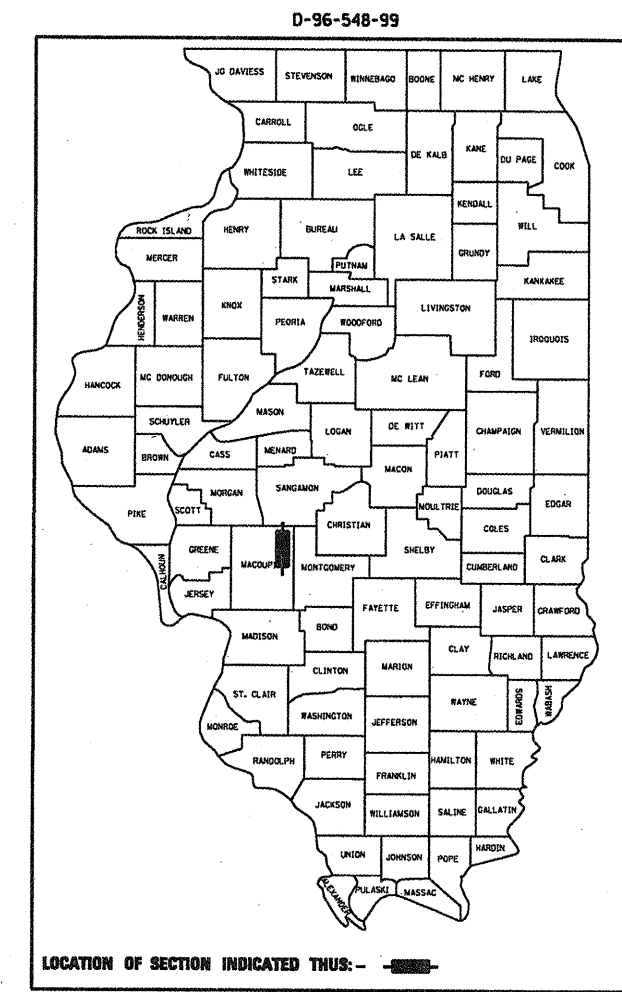


F.A.D. RYE	SECTION	COUNTY	TOTAL SHEETS	SHEET NO.
SBI4	(L-15D)B	MACOUPIN	21	1

STATE OF ILLINOIS  
 DEPARTMENT OF TRANSPORTATION  
 DIVISION OF HIGHWAYS  
**PROPOSED  
 HIGHWAY PLANS**

FOR INDEX OF SHEETS, SEE SHEET NO. 2

S.B.I. ROUTE 4 ( OLD IL. 4 )  
 SECTION ( L-15D )B  
 PROJECT NO. *ACRS-0117(070)*  
 MACOUPIN COUNTY  
 C-96-502-04



FULL SIZE PLANS HAVE BEEN PREPARED USING STANDARD ENGINEERING SCALES. REDUCED SIZED PLANS WILL NOT CONFORM TO STANDARD SCALES. IN MAKING MEASUREMENTS ON REDUCED PLANS, THE ABOVE SCALES MAY BE USED.

J.U.L.I.E.  
 JOINT UTILITY LOCATION INFORMATION FOR EXCAVATION  
 1-800-892-0123

AVERAGE DAILY TRAFFIC=150(2007)  
 %SU = 4  
 %MU = 0

NET LENGTH OF PROJECT=431.33 FT =0.08 MI.  
 GROSS LENGTH OF PROJECT=431.33 FT =0.08 MI.

STATE OF ILLINOIS  
 DEPARTMENT OF TRANSPORTATION  
 DIVISION OF HIGHWAYS

SUBMITTED *October 17, 2007*  
*Roy D. Dick* DISTRICT ENGINEER

*December 4, 2009*  
*Charles J. Ingersoll* ENGINEER OF DESIGN AND ENVIRONMENT

*December 4, 2009*  
*Christine M. Reed* DIRECTOR, DIVISION OF HIGHWAYS

**AMENT, INC.**  
 Engineering, Architecture, Surveying  
 Cedar Rapids, Iowa (319) 978-1401    Moline, Illinois (309) 763-9617  
 Illinois Professional Design Firm No. 184-0266

**PRINTED BY THE AUTHORITY  
 OF THE STATE OF ILLINOIS**

PROJECT MANAGER: Victor T. Young  
 PHONE: (217) 557-7897

PROJECT ENGINEER: JOHN NEGANGARD, P.E.  
 PHONE: (217) 782-6980

F:\PROJ\CIVIL\G13302.80\I4\DGN\COVER.DGN

CONTRACT NO. 72291

F.A.D. RTE.	SECTION	COUNTY	TOTAL SHEETS	SHEET NO.
S814	(L-150)B	MACOUPIN	21	2
STA.		TO STA.		
FED. ROAD DIST. NO. 6		ILLINOIS	FED. AID PROJECT	

INDEX OF SHEETS

SHT. NO.	DESCRIPTION
1	Cover Sheet
2	General Notes and Commitments
3-5	Summary of Quantities
6	Schedule of Quantities
7-9	Typical Sections
10	Alignments, Ties and Benchmarks
11	Traffic Control Plan
12	Plan and Profile
13-15	Structural Sheets
16	Soil Boring Logs
17	Details
18	Entrance Details
19-21	Cross Sections

GENERAL NOTES

- 1 Before ordering pipe culverts, the Contractor shall contact the Engineer as to the exact length and quantity required.
- 2 Where section or subsection monuments are encountered, The Engineer shall be notified before such monuments are removed. The Contractor shall protect and carefully preserve all monuments until an authorized Surveyor or agent has witnessed or otherwise referenced their location. The Contractor shall be responsible for having an authorized Surveyor reestablish any section or subsection monuments destroyed by his operations.
- 3 All areas disturbed by the Contractor during the construction of the project shall be seeded in accordance with Section 250 and mulched in accordance with Section 251 Mulch Method 2 of the Standard Specifications.
 

Item
Seeding, Class 2 (Special)
Nitrogen Fertilizer Nutrient - 90 lbs/ Acre
Phosphorus Fertilizer Nutrient - 90 lbs/ Acre
Potassium Fertilizer Nutrient - 90 lbs/ Acre
Agricultural Ground Limestone - 2 Ton/ Acre
Mulch, Method 2 - 2 Ton/ Acre
- 4 All elevations referring to U.S.G.S mean sea level datum.
- 5 Abandoned underground utilities that conflict with construction shall be disposed of outside the limits of the right of way according to Article 202.03 of the Standard Specifications and as directed by the Engineer. The work shall not be paid for separately but shall not be included in the cost of Earth Excavation.
- 6 Any Reference to a standard in these plans shall be interpreted to mean the edition as indicated by the sub number listed on the index of sheets or the copy of the standard included in these plans.
- 7 J.U.L.L.E. shall be notified a minimum of 48 hours in advance of any excavation - (800) 892-0123.
- 8 In addition to field surveys and aerial surveys, plan dimensions and details relative to the existing facilities have been taken from existing plans and are subject to construction variations. It shall be the Contractor's responsibility to verify such dimensions and details in the field. Such variations shall not be a cause for additional compensation due to a change in the scope of the work. However, the Contractor will be paid for the quantity actually furnished at the bid price for the work.
- 9 All entrances shall remain accessible during and after construction.

STANDARDS

- 280001-05
- 420601-05
- 420701-02
- 420001-07
- 515001-03
- 630001-08
- 630301-05
- 631031-08
- 635001-01
- 635006-03
- 635011-02
- 701006-03
- 701901-01
- 780001-02
- 000001-05
- 001001-02
- BLR21-8

COMMITMENTS

- All entrances shall remain accessible during and after construction.
- The Field/Resident shall contact Studies and Plans concerning any major plan changes to make sure no previous commitments (not listed) were made affecting the design, and allow an improved design for future projects.
- 404 Permitting will need to be completed.

DISTRICT SIX	
EXAMINED <u>Feb 26</u> 20 <u>09</u>	
<i>Jean A. Hoar</i>	
OPERATIONS ENGINEER	
EXAMINED <u>Feb 25</u> 20 <u>09</u>	
<i>Jean A. Hoar</i>	
PROGRAM IMPLEMENTATION ENGINEER	
EXAMINED <u>October 14</u> 20 <u>09</u>	
<i>ARMIL</i>	
PROGRAM DEVELOPMENT ENGINEER	

All dimensions are in inches unless otherwise shown.

REVISIONS	
DATE	NAME

ILLINOIS DEPARTMENT OF TRANSPORTATION

GENERAL NOTES AND COMMITMENTS

SCALE: NO SCALE  
DATE

DRAWN BY PRL  
CHECKED BY LDB

S.B.I. RTE. 4	SECTION (L-15D) B	COUNTY MACOUPIN	TOTAL SHEETS 21	SHEET NO. 3
STA. 1605+99.63		TO STA. 1625+33.72		
FED. ROAD DIST. NO. 6		ILLINOIS FED. AID PROJECT		

LOCATION OF WORK				80% FED 20% STATE (BOX CULVERT)	
SUMMARY OF QUANTITIES				CONSTRUCTION TYPE CODE	
CODE NO.	ITEM	UNIT	TOTAL QUANTITY	X028-2A	
20200100	EARTH EXCAVATION	CU YD	270	270	
25000200	SEEDING, CLASS 2	ACRE	0.2	0.2	
25000400	NITROGEN FERTILIZER NUTRIENT	POUND	18.0	18.0	
25000500	PHOSPHORUS FERTILIZER NUTRIENT	POUND	18.0	18.0	
25000600	POTASSIUM FERTILIZER NUTRIENT	POUND	18.0	18.0	
25000700	AGRICULTURAL GROUND LIMESTONE	TON	0.4	0.4	
25100115	MULCH, METHOD 2	ACRE	0.2	0.2	
28000250	TEMPORARY EROSION CONTROL SEEDING	POUND	100	100	
28100107	STONE RIPRAP, CLASS A4	SQ YD	100	100	
28200200	FILTER FABRIC	SQ YD	152	152	
42000300	PORTLAND CEMENT CONCRETE PAVEMENT 8"	SQ YD	113	113	
42001200	PAVEMENT FABRIC	SQ YD	113	113	

REVISIONS	
NAME	DATE

ILLINOIS DEPARTMENT OF TRANSPORTATION

SUMMARY OF QUANTITIES

SCALE: NO SCALE  
DATE:

DRAWN BY PRL  
CHECKED BY JDR

Rev.

S.B.L. RY. 4	SECTION	COUNTY	TOTAL SHEETS	SHEET NO.
SB14	(L-15D) B	MACOUPIN	21	4
STA. 1605+99.63		TO STA. 1625+33.72		
FED. ROAD DIST. NO. 6		ILLINOIS FED. AID PROJECT		

SUMMARY OF QUANTITIES				CONSTRUCTION TYPE CODE	
CODE NO.	ITEM	UNIT	TOTAL QUANTITY	X028-2A	
44000100	PAVEMENT REMOVAL	SQ YD	40	40	
48101600	AGGREGATE SHOULDERS, TYPE B 8"	SQ YD	592	592	
50100100	REMOVAL OF EXISTING STRUCTURES	EACH	1	1	
50105220	PIPE CULVERT REMOVAL	FOOT	50	50	
50800105	REINFORCEMENT BARS	POUND	10460	10460	
50800205	REINFORCEMENT BARS, EPOXY COATED	POUND	7410	7410	
50800305	WELDED WIRE FABRIC 6X6	SQ YD	113	113	
51500100	NAME PLATES	EACH	1	1	
54003000	CONCRETE BOX CULVERTS	CU YD	100.7	100.7	
54200640	PIPE CULVERTS, TYPE 1, CORRUGATED STEEL OR ALUMINUM CULVERT PIPE 15"	FOOT	442	442	
* 63000001	STEEL PLATE BEAM GUARD RAIL, TYPE A, 6 FOOT POSTS	FOOT	100	100	
* 63100085	TRAFFIC BARRIER TERMINAL, TYPE 6	EACH	4	4	

\* Specialty Items

REVISIONS	
NAME	DATE

ILLINOIS DEPARTMENT OF TRANSPORTATION

SUMMARY OF QUANTITIES

SCALE: NO SCALE  
DATE:

DRAWN BY PRL  
CHECKED BY JDR

S.B.I. RTE. 4	SECTION (L-15D) B	COUNTY MACOUPIN	TOTAL SHEETS 21	SHEET NO. 5
STA. 1605+99.63		TO STA. 1625+33.72		
FED. ROAD DIST. NO. 6		ILLINOIS FED. AID PROJECT		

LOCATION OF WORK				80% FED 20% STATE (BOX CULVERT)	
SUMMARY OF QUANTITIES				CONSTRUCTION TYPE CODE	
CODE NO.	ITEM	UNIT	TOTAL QUANTITY	X028-2A	
* 63100167	TRAFFIC BARRIER TERMINAL, TYPE 1 (SPECIAL) TANGENT	EACH	4	4	
66502400	WOVEN WIRE FENCE TO BE REMOVED AND RE-ERECTED	FOOT	160	160	
67000500	ENGINEER'S FIELD OFFICE, TYPE B	CAL MO	6	6	
67100100	MOBILIZATION	L SUM	1	1	
70101830	TRAFFIC CONTROL AND PROTECTION, STANDARD BLR-21	L SUM	1	1	
* 78001120	PAINT PAVEMENT MARKING - LINE 5"	FOOT	550	550	
* 78200410	GUARDRAIL MARKERS, TYPE A	EACH	4	4	
* 78201000	TERMINAL MARKER - DIRECT APPLIED	EACH	4	4	
X0322932	SILICONE JOINT SEALER, 1.5"	FOOT	32	32	
X0324118	GRANULAR CULVERT BACKFILL	CU YD	54	54	
X0326817	STANDARD BRICK VENEER	SQ FT	68	68	

*\*Specialty Items*

REVISIONS	
NAME	DATE

ILLINOIS DEPARTMENT OF TRANSPORTATION

SUMMARY OF QUANTITIES

SCALE: NO SCALE  
DATE:

DRAWN BY PRL  
CHECKED BY JDR

S.B.I. RTE. 4	SECTION (L-15D) B	COUNTY MACOUPIN	TOTAL SHEETS 21	SHEET NO. 6
STA. 1605+99.63		TO STA. 1625+33.72		
FED. ROAD DIST. NO. 6		ILLINOIS FED. AID PROJECT		

EARTHWORK				
LOCATION				EARTH EXCAVATION
				CY
LT & RT	1614+00.00	TO	1616+48.00	75
LT & RT	1616+48.00		1616+92.00	80
LT & RT	1616+92.00		1619+00.00	115
TOTAL				270

SEEDING										
LOCATION		SEEDING CLASS 2	TEMPORARY EROSION CONTROL SEEDING	NITROGEN FERTILIZER NUTRIENT	PHOSPHORUS FERTILIZER NUTRIENT	POTASSIUM FERTILIZER NUTRIENT	MULCH METHOD 2	AGRICULTURAL GROUND LIMESTONE		
		ACRES	POUND	POUND	POUND	POUND	ACRE	TON		
LT	1614+00.00	1618+81.33	0.1	10	9.0	9.0	9.0	0.1	0.2	
RT	1614+00.00	1619+00.00	0.1	10	9.0	9.0	9.0	0.1	0.2	
TOTAL			0.2	20	18.0	18.0	18.0	0.2	0.4	

PAVING SUMMARY									
LOCATION			PAVEMENT REMOVAL	AGGREGATE SHOULDERS, TYPE B 8"	PORTLAND CEMENT CONCRETE PAVEMENT 8"	GRANULAR CULVERT BACKFILL	WELDED WIRE FABRIC 6x6		
			SY	SY	SY	CY	SY		
LT&RT	1614+50.00	1615+00.00	0	56	0	0	0		
LT&RT	1615+00.00	1615+32.00	0	50	0	0	0		
LT&RT	1615+32.00	1615+82.00	0	78	0	0	0		
LT&RT	1615+82.00	1616+48.00	0	103	0	0	0		
LT&RT	1616+48.00	1616+92.00	40	34	113	54	113		
LT&RT	1616+92.00	1617+57.00	0	101	0	0	0		
LT&RT	1617+57.00	1618+07.00	0	78	0	0	0		
LT&RT	1618+07.00	1618+31.33	0	38	0	0	0		
LT&RT	1618+31.33	1618+81.33	0	56	0	0	0		
TOTAL			40	592	113	54	113		

PIPE CULVERT			
LOCATION		PIPE CULVERTS, CORRUGATED STEEL, 15"	PIPE CULVERT REMOVAL
		FOOT	FOOT
RT	1615+00.00	179	
LT	1615+50.00	129	
RT	1615+79.61		15
LT	1615+93.27		20
RT	1617+52.20		15
RT	1618+00.00	134	
TOTAL		442	50

GUARDRAIL IMPROVEMENT SCHEDULE							
LOCATION		SPBGR TYPE A	TRAFFIC BARRIER TERMINAL TYPE 1 SPECIAL	TRAFFIC BARRIER TERMINAL TYPE 6	GUARDRAIL MARKERS TYPE A	TERMINAL MARKERS DIRECT APPLIED	
		FEET	EACH	EACH	EACH	EACH	
RT	1615+32.00	1616+59.00	50	1	1	1	1
LT	1615+82.00	1616+59.00	0	1	1	1	1
RT	1616+81.00	1617+57.00	0	1	1	1	1
LT	1616+81.00	1618+07.00	50	1	1	1	1
TOTAL			100	4	4	4	4

FENCING			
LOCATION			WOVEN WIRE FENCE TO BE REMOVED AND RE-ERECTED
			FOOT
LT	1615+58.00	TO	1617+17.00
TOTAL			160

ENGINEER'S FIELD OFFICE TYPE B	
LOCATION	CAL MO
JOBSITE	6
TOTAL	6

MOBILIZATION	
LOCATION	L SUM
JOBSITE	1
TOTAL	1

PAVEMENT MARKINGS			
LOCATION			PAINT PAVEMENT MARKING SOLID YELLOW 5"
STATION	TO	STATION	FOOT
1615+32.00		1618+07.00	550
TOTAL			550

SILICONE JOINT SPECIAL	
LOCATION	FOOT
1616+59.00	16
1618+81.00	16
TOTAL	32

REVISIONS	
NAME	DATE

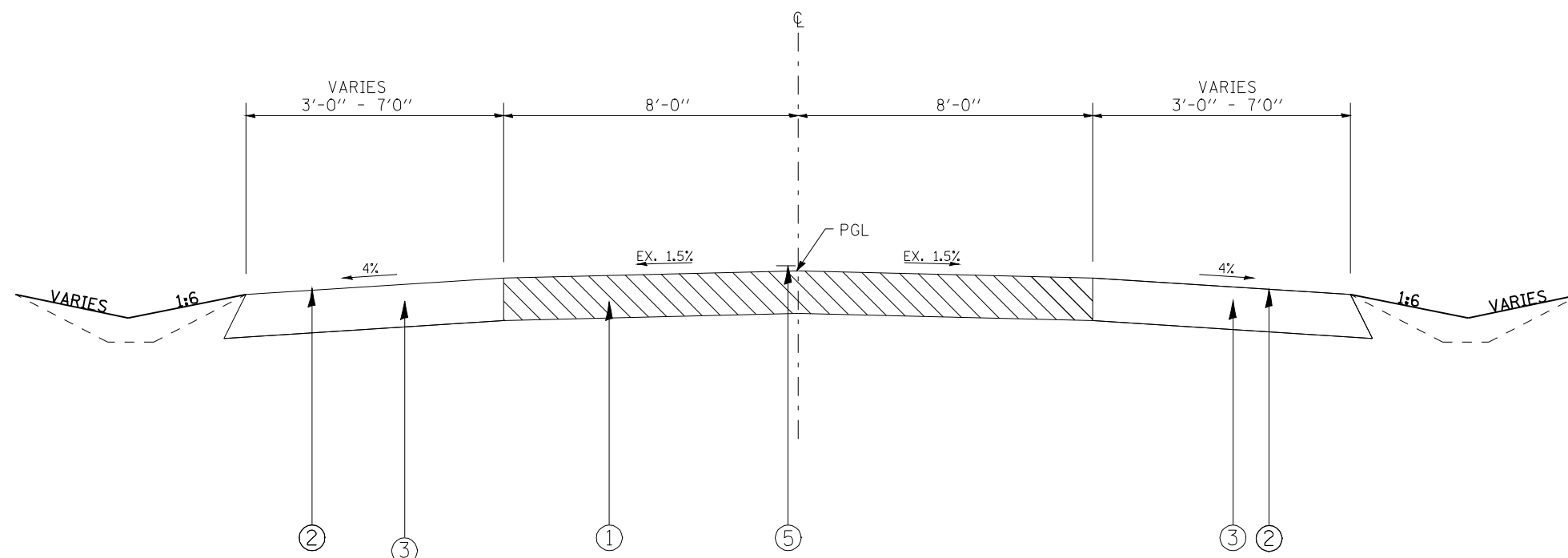
ILLINOIS DEPARTMENT OF TRANSPORTATION

SCHEDULE OF QUANTITIES

SCALE: NO SCALE  
DATE:  

DRAWN BY PRL  
CHECKED BY JDR

F.A.D. RTE.	SECTION	COUNTY	TOTAL SHEETS	SHEET NO.
SBI4	(L-150)B	MACOUPIN	21	7
STA. - -		TO STA. - -		
FED. ROAD DIST. NO. 6		ILLINOIS	FED. AID PROJECT	

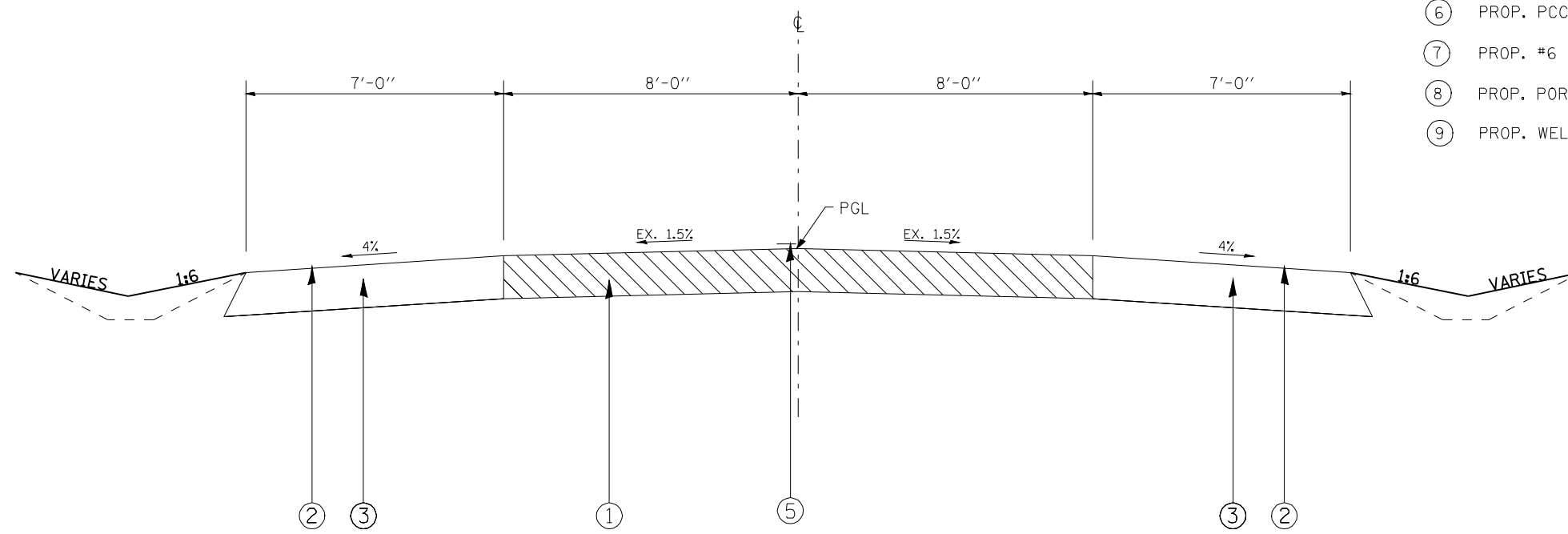


PROPOSED TYPICAL SECTION

STA. 1614+50 TO STA. 1615+00  
 STA. 1618+31.33 TO STA. 1618+81.33

LEGEND

- ① EX. PCC PAVEMENT
- ② EX. EARTH SHOULDER
- ③ PROP. AGG SHOULDER-TYPE B-8"
- ④ PROP. STEEL PLATE BEAM GUARD RAIL, TYPE A
- ⑤ PROP. PAINT PAV'T MARKING LINE - 5"
- ⑥ PROP. PCC PAVEMENT - 8"
- ⑦ PROP. #6 TIE BARS AT 24" ON CENTER
- ⑧ PROP. POROUS GRANULAR CULVERT BACKFILL (CA6) - 12" MIN
- ⑨ PROP. WELDED WIRE FABRIC 6x6



PROPOSED TYPICAL SECTION

STA. 1615+00 TO STA. 1615+32  
 STA. 1618+07 TO STA. 1618+31.33

REVISIONS	
NAME	DATE

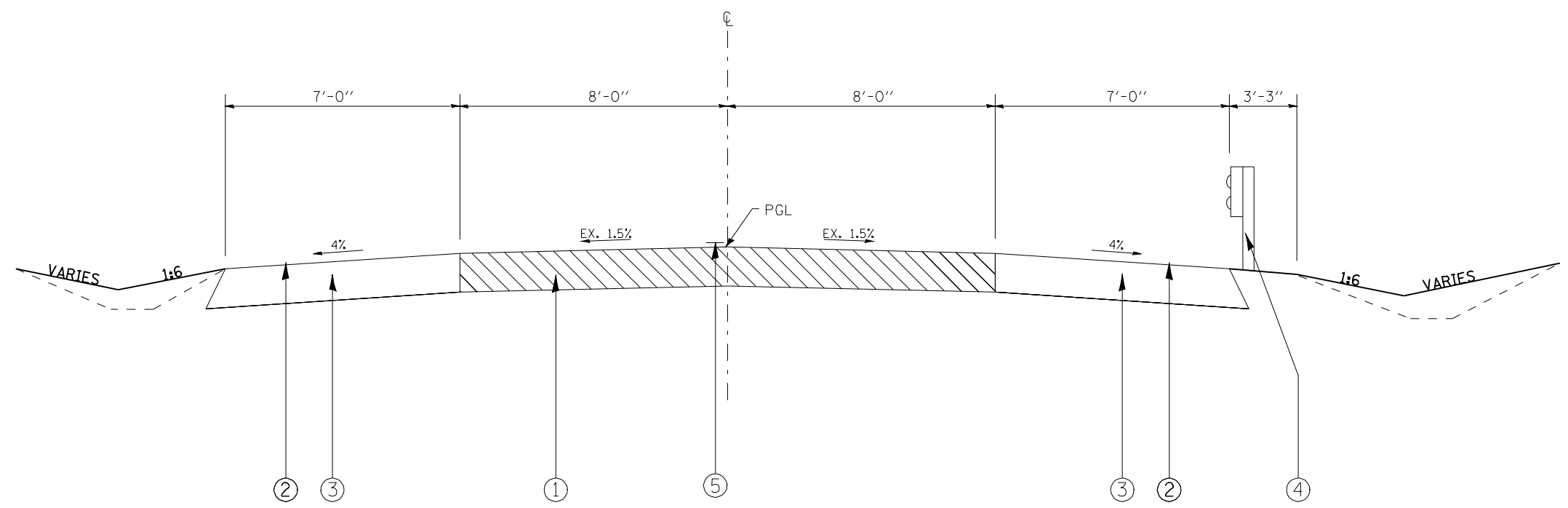
ILLINOIS DEPARTMENT OF TRANSPORTATION

**TYPICAL SECTIONS**

SCALE: VERT. NONE  
 HORIZ. NONE

DATE:                      DRAWN BY: MLH  
 CHECKED BY: LDB

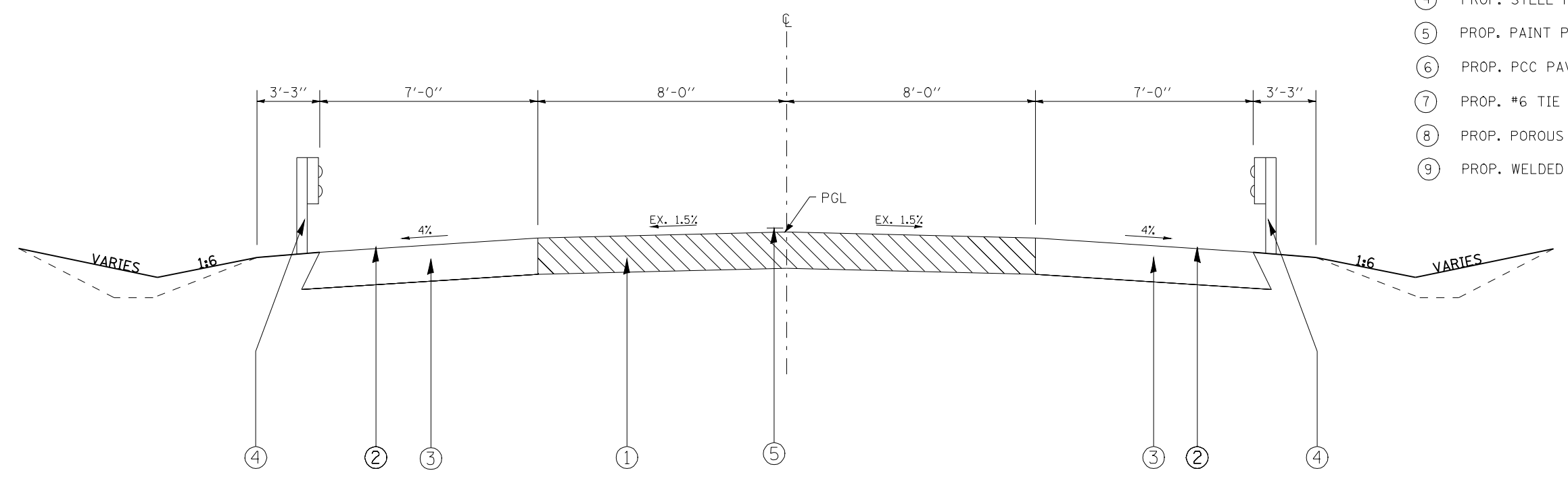
F.A.D. RTE.	SECTION	COUNTY	TOTAL SHEETS	SHEET NO.
SBI4	(L-150)B	MACOUPIN	21	8
STA.		TO STA.		
FED. ROAD DIST. NO. 6		ILLINOIS	FED. AID PROJECT	



PROPOSED TYPICAL SECTION  
STA. 1615+32 TO STA. 1615+82

LEGEND

- ① EX. PCC PAVEMENT
- ② EX. EARTH SHOULDER
- ③ PROP. AGG SHOULDER-TYPE B-8"
- ④ PROP. STEEL PLATE BEAM GUARD RAIL, TYPE A
- ⑤ PROP. PAINT PAV'T MARKING LINE - 5"
- ⑥ PROP. PCC PAVEMENT - 8"
- ⑦ PROP. #6 TIE BARS AT 24" ON CENTER
- ⑧ PROP. POROUS GRANULAR CULVERT BACKFILL (CA6) - 12" MIN
- ⑨ PROP. WELDED WIRE FABRIC 6x6



PROPOSED TYPICAL SECTION  
STA. 1615+82 TO STA. 1616+48  
STA. 1616+92 TO STA. 1617+57

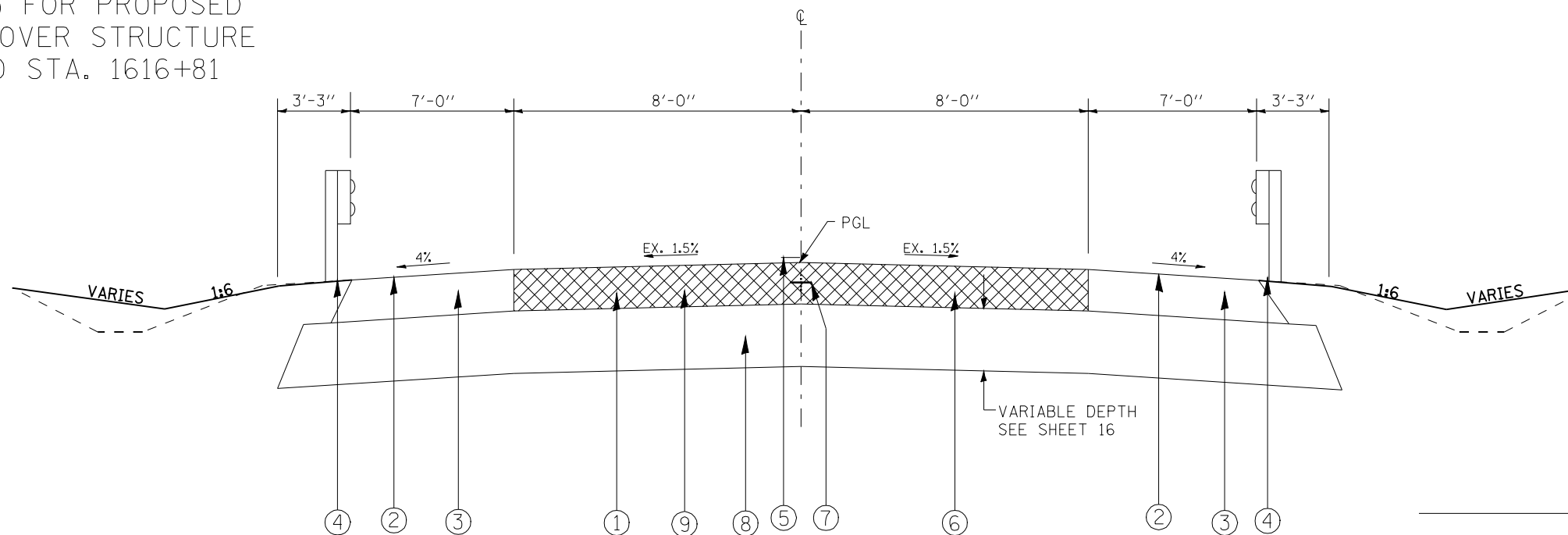
REVISIONS	
NAME	DATE

ILLINOIS DEPARTMENT OF TRANSPORTATION  
**TYPICAL SECTIONS**  
SCALE: VERT. NONE  
HORIZ. NONE  
DRAWN BY MLH  
CHECKED BY LDB



F.A.D. RTE.	SECTION	COUNTY	TOTAL SHEETS	SHEET NO.
SBI4	L-1501B	MACOUPIN	21	9
STA. 1616+36.5		TO STA. 1617+03.50		
FED. ROAD DIST. NO. 6		ILLINOIS FED. AID PROJECT		

SEE SHEET NO. 13 FOR PROPOSED TYPICAL SECTION OVER STRUCTURE STA. 1616+59 TO STA. 1616+81

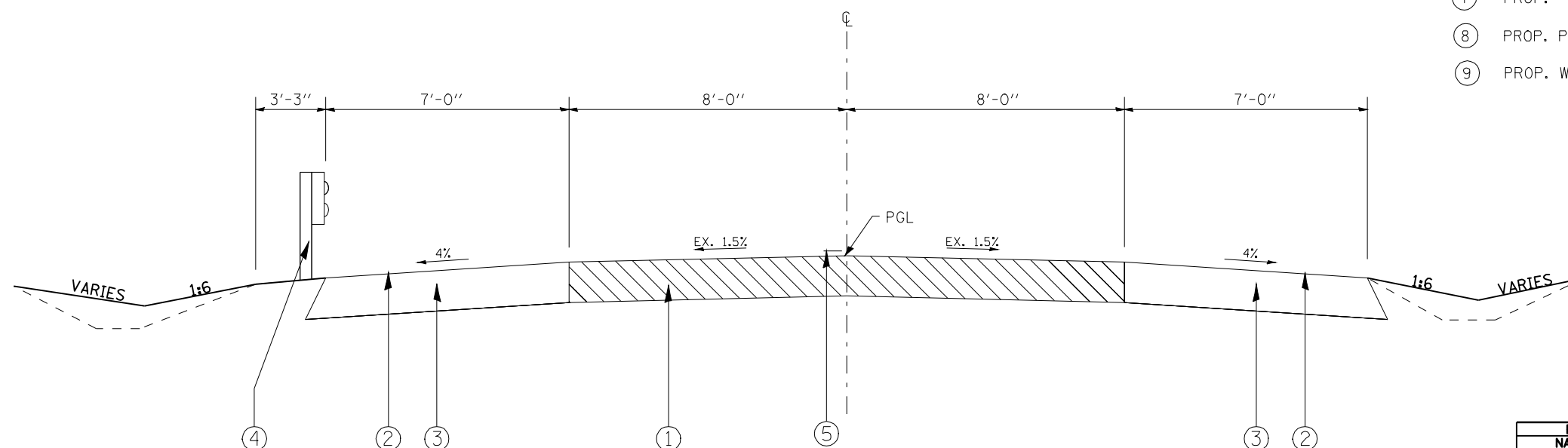


SBI RTE 4 (OLD IL 4)  
PROPOSED TYPICAL SECTION (STRUCTURE APPROACHES)

STA. 1616+48 TO STA. 1616+59  
STA. 1616+81 TO STA. 1616+92

LEGEND

- ① EX. PCC PAVEMENT
- ② EX. EARTH SHOULDER
- ③ PROP. AGG SHOULDER-TYPE B-8"
- ④ PROP. STEEL PLATE BEAM GUARD RAIL, TYPE A
- ⑤ PROP. PAINT PAV'T MARKING LINE - 5"
- ⑥ PROP. PCC PAVEMENT - 8"
- ⑦ PROP. #6 TIE BARS AT 24" ON CENTER
- ⑧ PROP. POROUS GRANULAR CULVERT BACKFILL (CA6) - 12" MIN
- ⑨ PROP. WELDED WIRE FABRIC 6x6



PROPOSED TYPICAL SECTION  
STA. 1617+57 TO STA. 1618+07

REVISIONS	
NAME	DATE

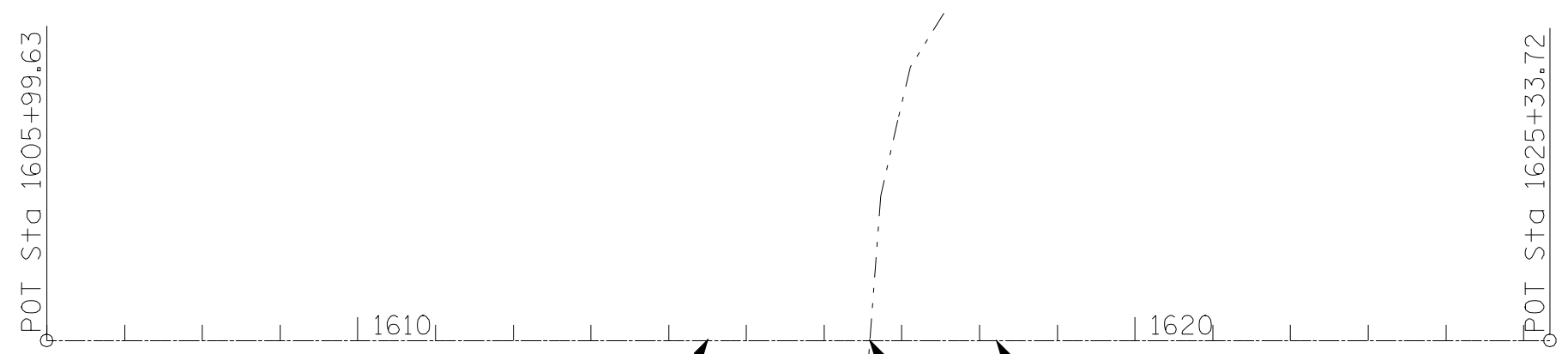
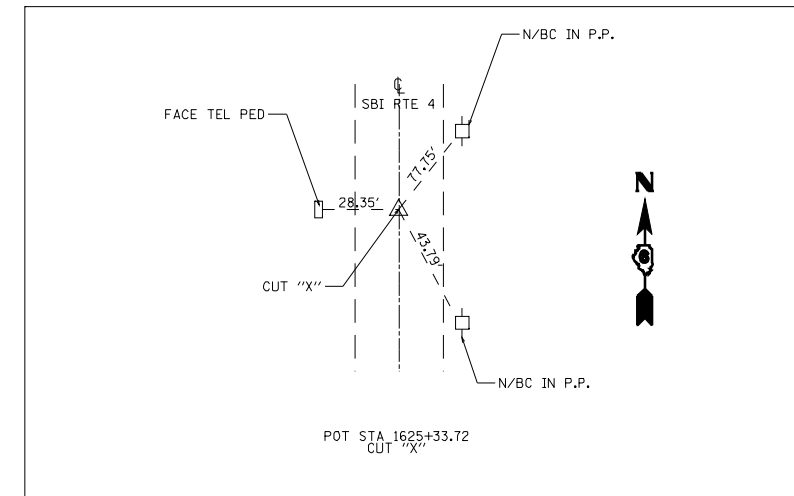
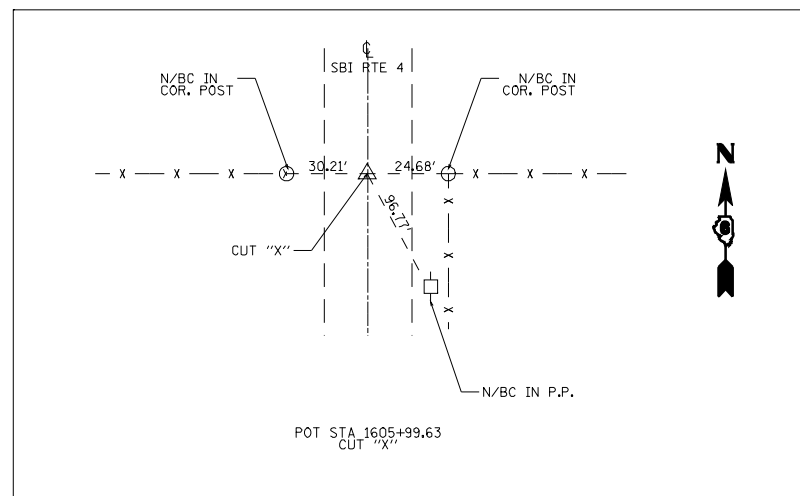
ILLINOIS DEPARTMENT OF TRANSPORTATION

TYPICAL SECTIONS

SCALE: VERT. NONE  
HORIZ. NONE

DRAWN BY MLH  
CHECKED BY LDB

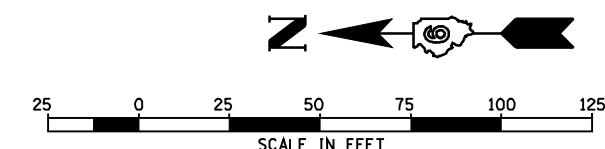
F.A.D. RTE.	SECTION	COUNTY	TOTAL SHEETS	SHEET NO.
SBI4	(L-15D) B	MACOUPIN	21	10
STA. 1605+99.63		TO STA. 1625+33.72		
FED. ROAD DIST. NO. 6		ILLINOIS FED. AID PROJECT		



PROJECT BEGINS  
STA. 1614+50

PROJECT ENDS  
STA. 1618+81.33

SHEARLES BRANCH TRIB.  
SEC. (L-15D)B  
SN 059-0046 (EXIST.)  
SN 059-0502 (PROP.)  
STA. 1616+70



REVISIONS	
NAME	DATE

ILLINOIS DEPARTMENT OF TRANSPORTATION  
**ALIGNMENT, TIES AND BENCHMARKS**

SCALE: 1"=100'  
DATE: \_\_\_\_\_  
DRAWN BY: PRL  
CHECKED BY: JDR

BM # RCL 9: ELEV = 648.64; CUT "□" IN S.E. CORNER OF WEST HEADWALL @ STRUCTURE # 059-0046  
BM # 2: ELEV = 645.02; CHSLD "□" ON NE WING WALL STRUCTURE # 059-0046



F.A.D. RTE.	SECTION	COUNTY	TOTAL SHEETS	SHEET NO.
SBI4	L-1501B	MACOUPIN	21	12
STA. 1614+50 TO STA. 1618+81.33				
FED. ROAD DIST. NO. 6 ILLINOIS FED. AID PROJECT				

BM\*2 CHSLD."□" ON N.E. WINGWALL OF STRUCTURE #059-0046. ELEV. = 645.02

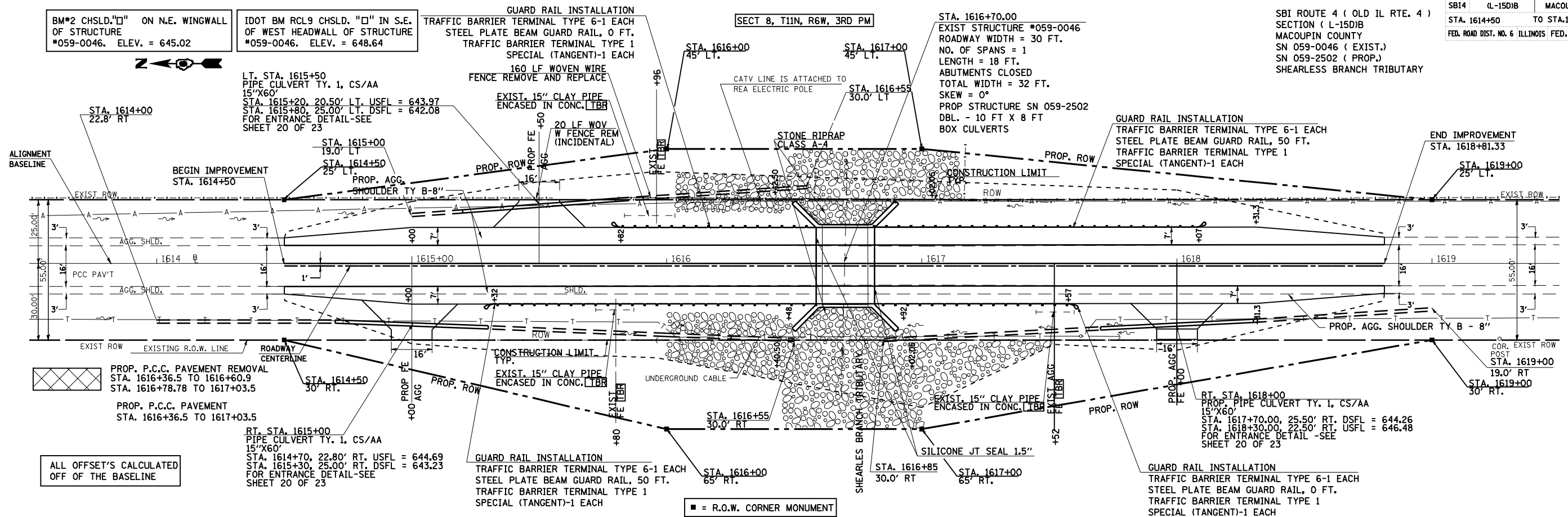
IDOT BM RCL9 CHSLD. "□" IN S.E. OF WEST HEADWALL OF STRUCTURE #059-0046. ELEV. = 648.64

SECT 8, T11N, R6W, 3RD PM

STA. 1616+70.00  
EXIST STRUCTURE #059-0046  
ROADWAY WIDTH = 30 FT.  
NO. OF SPANS = 1  
LENGTH = 18 FT.  
ABUTMENTS CLOSED  
TOTAL WIDTH = 32 FT.  
SKEW = 0°  
PROP STRUCTURE SN 059-2502  
DBL. - 10 FT X 8 FT  
BOX CULVERTS

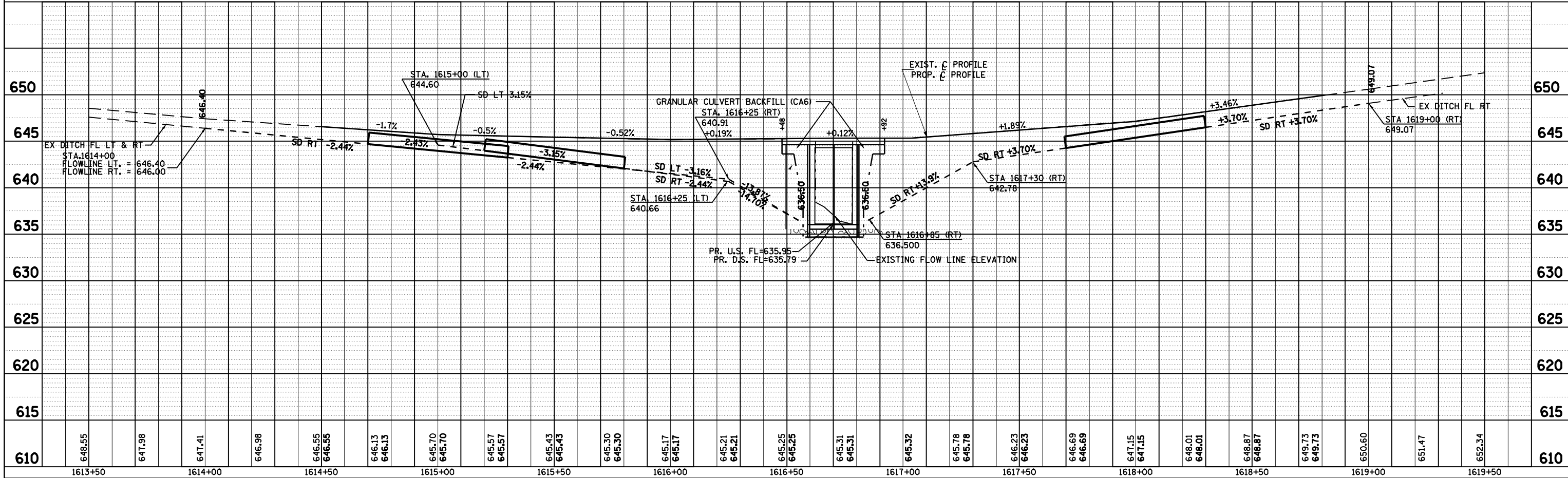
SBI ROUTE 4 ( OLD IL RTE. 4 )  
SECTION ( L-1501B  
MACOUPIN COUNTY  
SN 059-0046 ( EXIST.)  
SN 059-2502 ( PROP.)  
SHEARLESS BRANCH TRIBUTARY

DATE	
BY	
PLAN	
NO. _____	
DATE	
BY	
NOTE BOOK	
NO. _____	
DATE	
BY	
NOTE BOOK	
NO. _____	



ALL OFFSET'S CALCULATED OFF OF THE BASELINE

DATE	
BY	
PROFILE	
NO. _____	
DATE	
BY	
NOTE BOOK	
NO. _____	
DATE	
BY	
NOTE BOOK	
NO. _____	





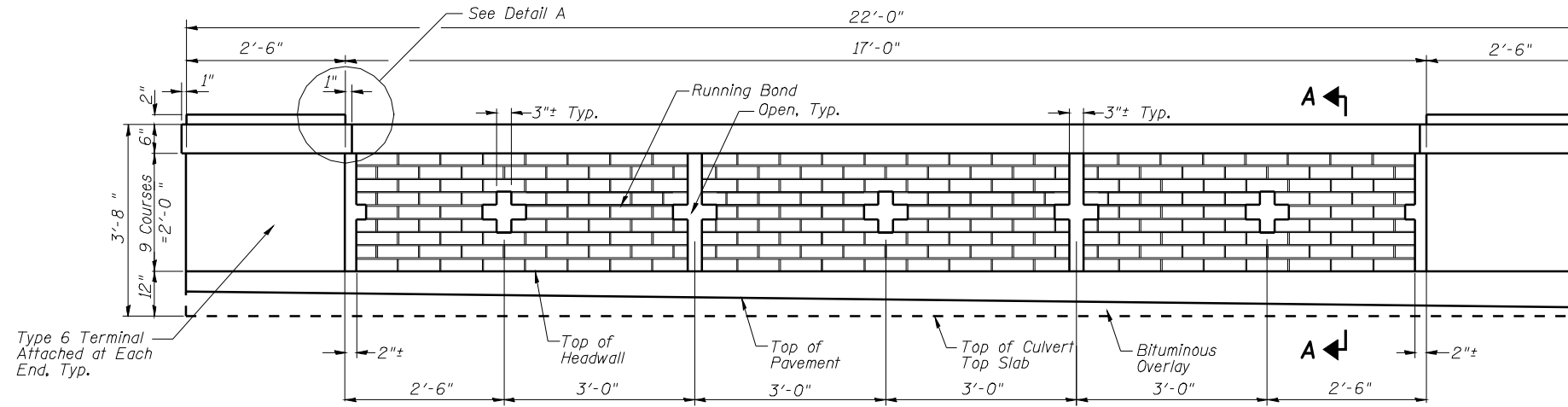


STATE OF ILLINOIS  
DEPARTMENT OF TRANSPORTATION

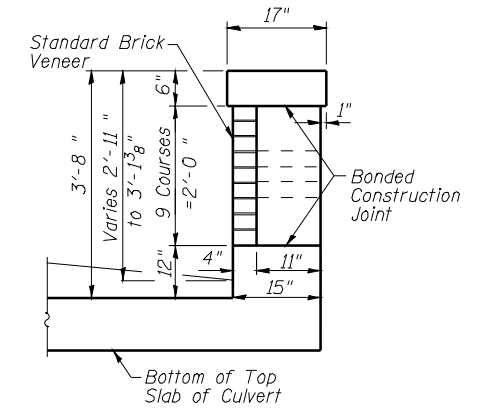
ROUTE NO.	SECTION	COUNTY	TOTAL SHEETS	SHEET NO.
SBI 4 OLD IL 4	YL-15D)B	Macoupin	21	15
FED. ROAD DIST. NO. 6	ILLINOIS	FED. AID PROJECT-		

SHEET NO. 3  
4 SHEETS

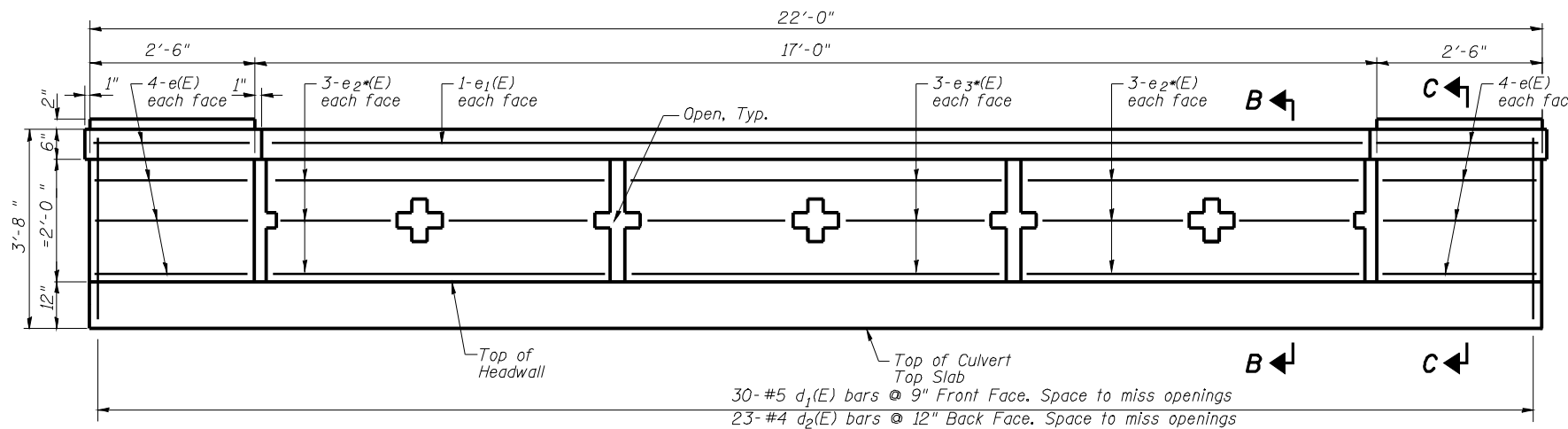
CONTRACT NO. 72291



**ELEVATION - PARAPET - 2 REQ'D**  
Showing Brick



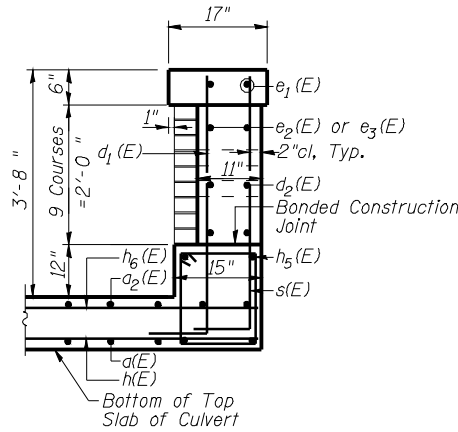
**SECTION A-A THRU PARAPET**  
Downstream as shown  
Upstream similar



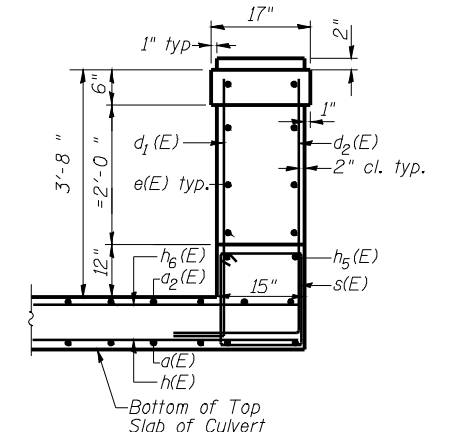
30-#5  $d_1(E)$  bars @ 9" Front Face. Space to miss openings  
23-#4  $d_2(E)$  bars @ 12" Back Face. Space to miss openings

\* Cut  $e_2(E)$  and  $e_3(E)$  bars as necessary in field at openings

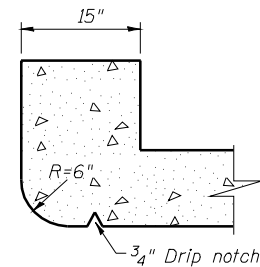
**ELEVATION - PARAPET**  
Showing Reinforcement



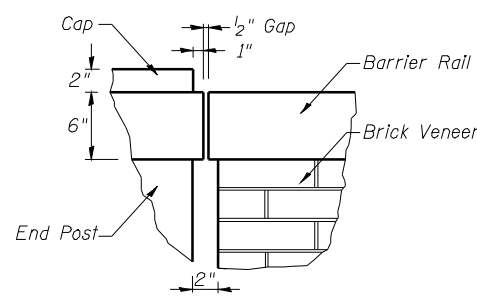
**SECTION B-B THRU PARAPET**  
Downstream as shown  
Upstream similar



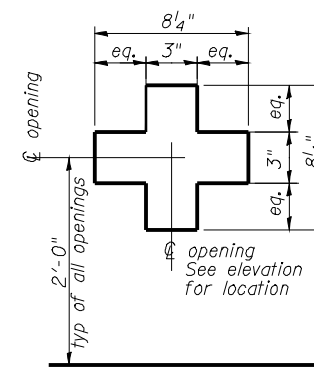
**SECTION C-C THRU PARAPET**  
Downstream as shown  
Upstream similar



**SECTION THRU HEADWALL**  
Upstream end only



**DETAIL A JOINT DETAIL**



**TYPICAL OPENING DIMENSION**  
Cross shown. All other openings similar

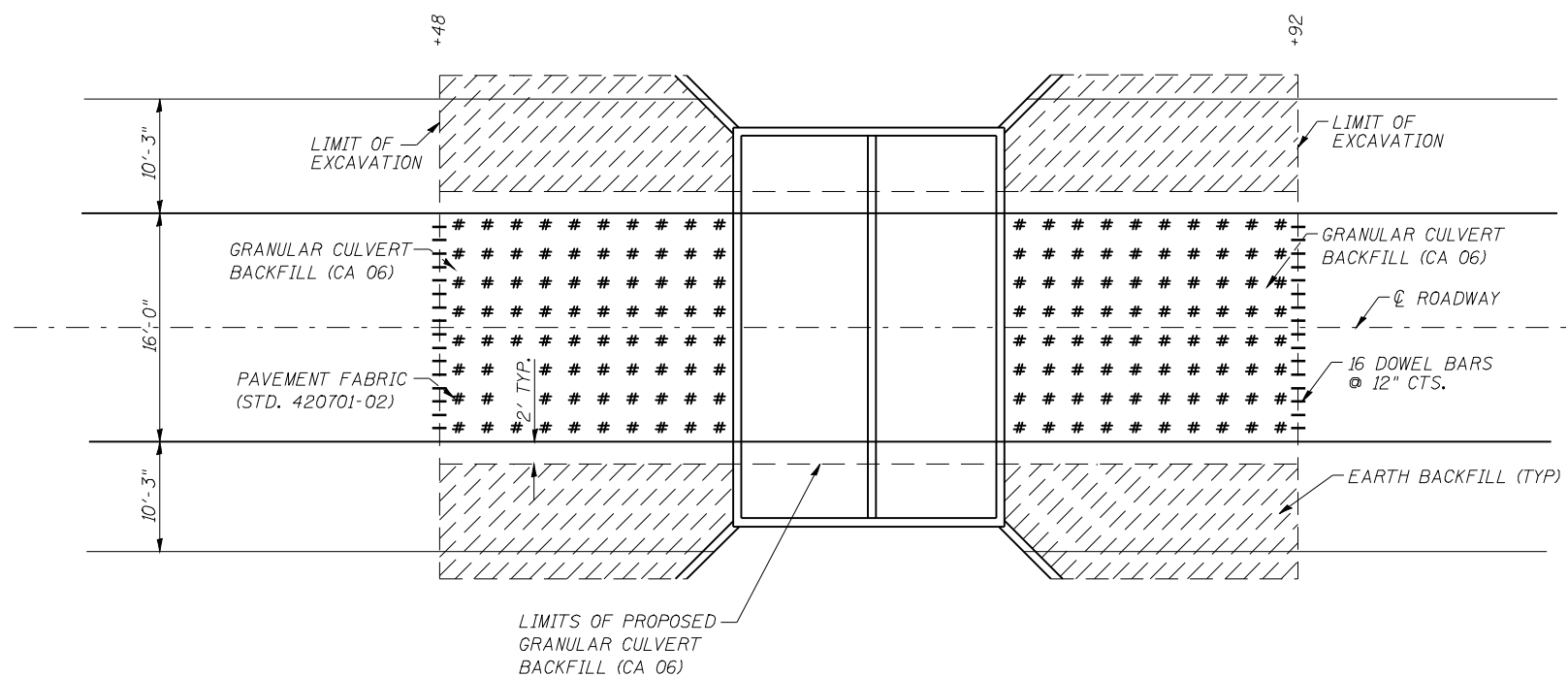
**CULVERT DETAILS**  
OLD IL ROUTE 4 OVER  
SHEARLES BRANCH TRIBUTARY  
SBI ROUTE 4 - SECTION (L-15D)B  
MACOUPIN COUNTY  
STATION 1616+70  
STRUCTURE NO. 059-2502

DESIGNED	J. BENNETT
CHECKED	M. HOOK
DRAWN	L. ROSE
CHECKED	J. BENNETT

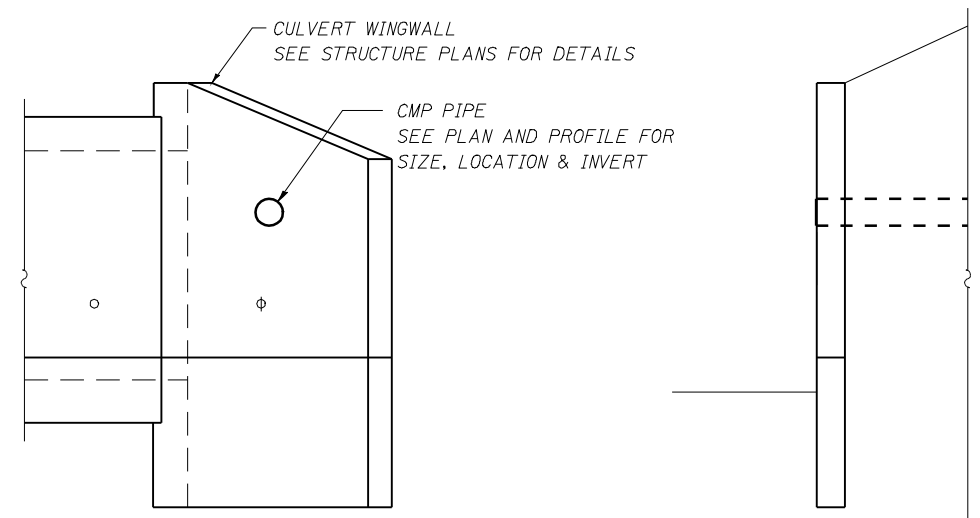




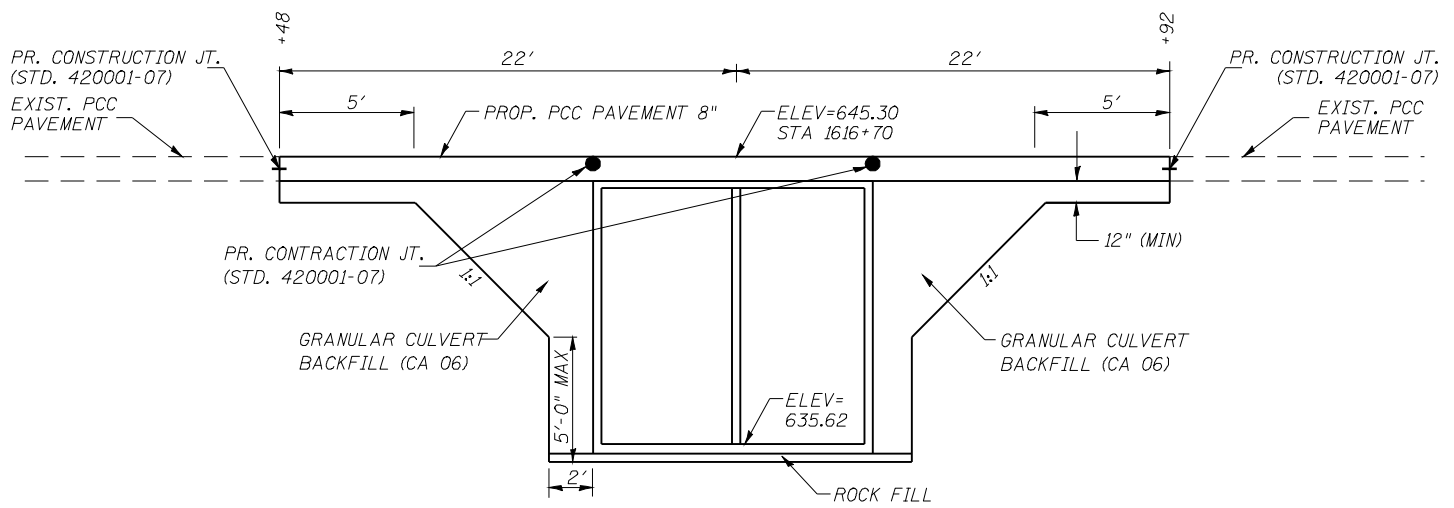
F.A.I. RTE.	SECTION	COUNTY	TOTAL SHEETS	SHEET NO.
SBI4	(L-15D)B	MACOUPIN	21	17
FED. ROAD DIST. NO. 6 ILLINOIS FED. AID PROJECT				



**PLAN VIEW**



**CMP THROUGH WING WALL**



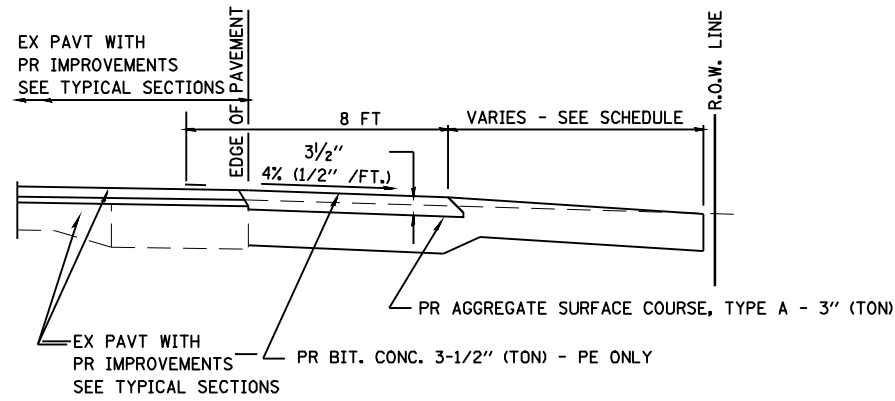
**ELEVATION**

**NOTE:**  
DOWEL BARS SHALL BE INCLUDED IN THE COST OF PCC PAVEMENT, 8"

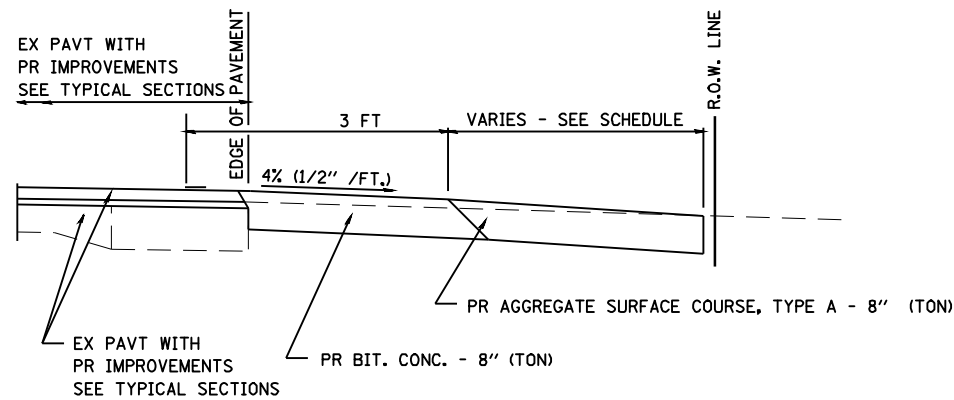
**DETAIL SHEET  
SBI ROUTE 4 (OLD IL 4)  
SECTION (L-15D) B**

g:\PROJ\CIVIL\913302.80\IL 4\structure\final\DETAIL

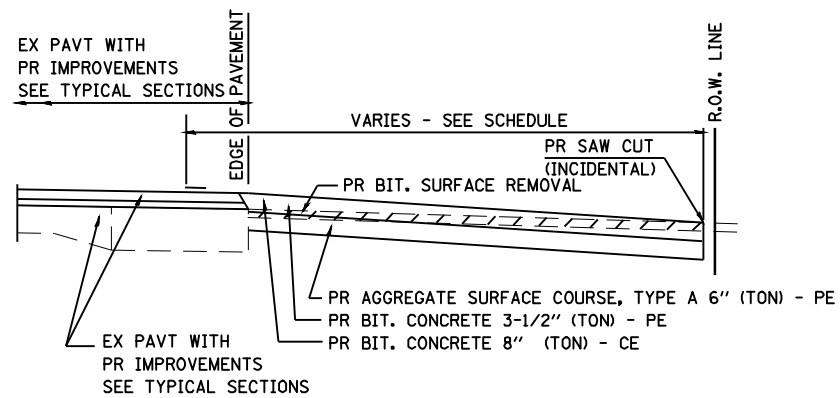
F.A.D. RTE.	SECTION	COUNTY	TOTAL SHEETS	SHEET NO.
SB14	(L-15D)B	MACOUPIN	21	18
STA.		TO STA.		
FED. ROAD DIST. NO. 6 ILLINOIS FED. AID PROJECT				



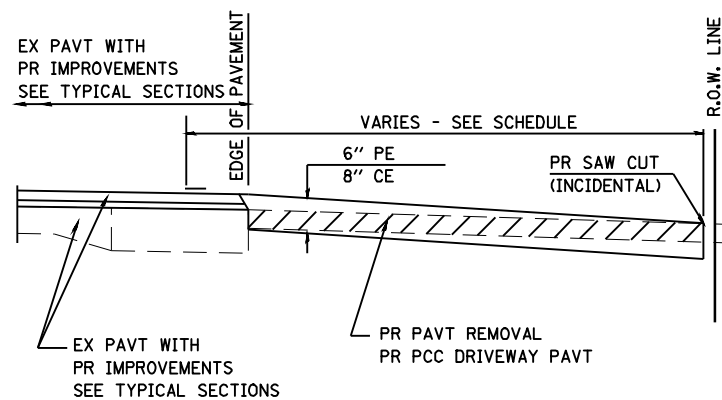
SECTION A-A FOR EX EARTH/AGGREGATE FE & PE



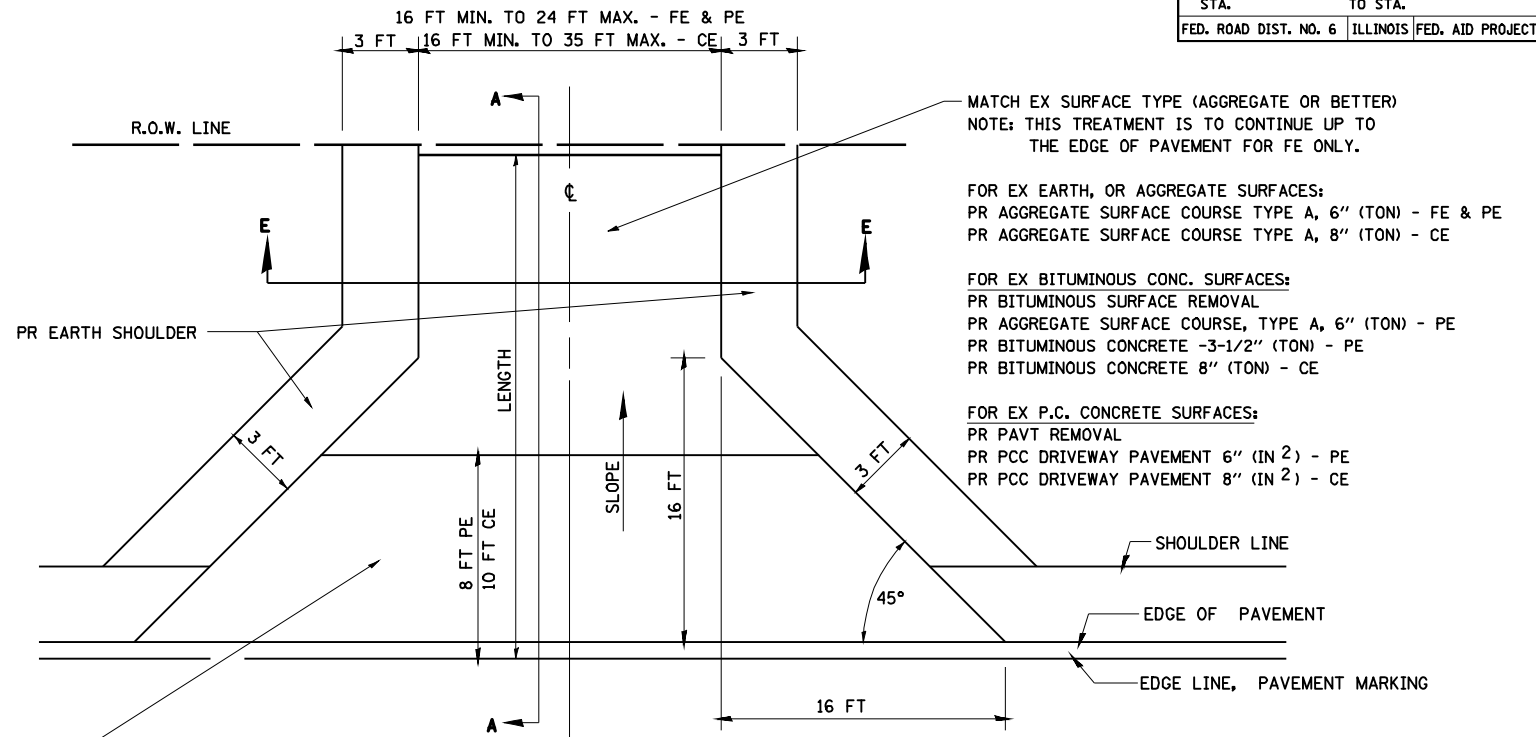
SECTION A-A FOR EX EARTH/AGGREGATE CE



SECTION A-A FOR EX BITUMINOUS PE & CE



SECTION A-A FOR EX P.C. CONC. PE & CE



FOR EX EARTH, AGGREGATE, OR BITUMINOUS CONC SURFACES:  
 PR BIT SURFACE REMOVAL (IF APPLICABLE)  
 PR AGGREGATE SURFACE COURSE TYPE A 8" (TON) - FE  
 PR AGGREGATE SURFACE COURSE TYPE A, 8" (TON) &  
 PR BITUMINOUS CONCRETE 3-1/2" (TON) - PE  
 PR BITUMINOUS CONCRETE 8" (TON) - CE

FOR P.C. CONCRETE SURFACES:  
 PR PAVT REMOVAL  
 PR PCC DRIVEWAY PAVT 6" (SQ IN)- PE  
 PR PCC DRIVEWAY PAVT 8" (SQ IN)- CE

GENERAL NOTES:

THE RESIDENT ENGINEER WILL DETERMINE THE EXACT TYPE OF IMPROVEMENT TO BE COMPLETED FOR ALL ENTRANCES, SIDEROADS AND MAILBOX TURNOUTS ON THIS PROJECT.

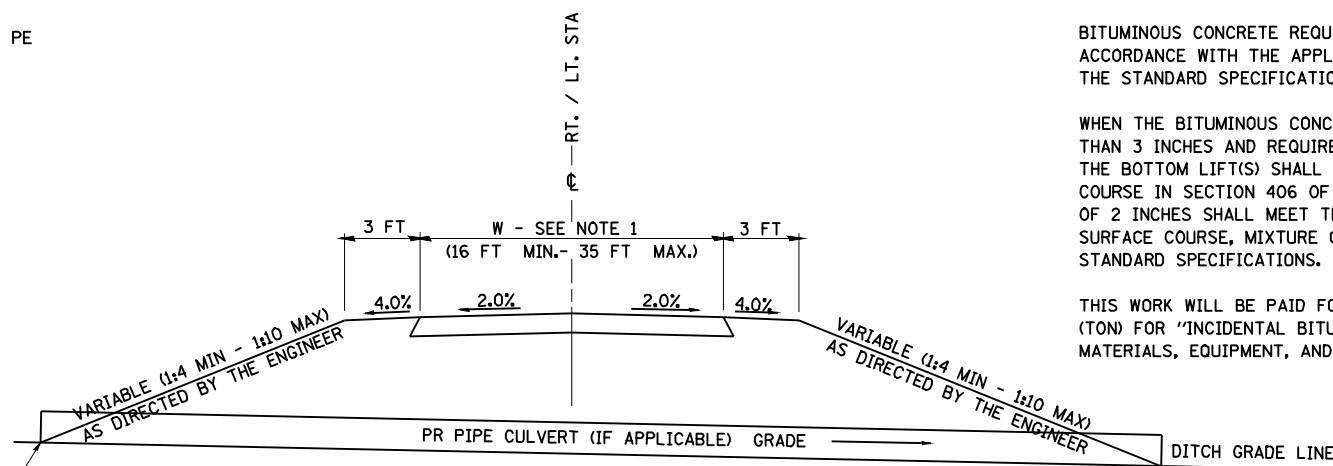
THE PLAN DETAILS AND SCHEDULES SHOULD BE USED AS A GUIDE FOR THE ENGINEER TO IMPLEMENT THE FINAL DESIGN. THE ENGINEER MAY DECIDE TO SALVAGE PORTIONS OF THE EXISTING ENTRANCE PAVEMENT STRUCTURE; THEREFORE, REDUCING PAY ITEM QUANTITIES. NO ADDITIONAL PAYMENT WILL BE ALLOWED FOR THIS REDUCTION IN QUANTITIES.

ANY WORK THE ENGINEER REQUIRES WHICH IS NOT COVERED BY A PAY ITEM CONTAINED IN THE PLANS WILL BE PAID FOR IN ACCORDANCE WITH ARTICLE 109.04 OF THE STANDARD SPECIFICATIONS.

BITUMINOUS CONCRETE REQUIRED TO CONSTRUCT THE ENTRANCES SHALL BE IN ACCORDANCE WITH THE APPLICABLE PORTIONS OF SECTION 406 AND 408 OF THE STANDARD SPECIFICATIONS AND AS DIRECTED BY THE ENGINEER.

WHEN THE BITUMINOUS CONCRETE PROPOSED FOR THE IMPROVEMENT IS THICKER THAN 3 INCHES AND REQUIRE PLACEMENT IN MORE THAN ONE LIFT. THE BOTTOM LIFT(S) SHALL MEET THE REQUIREMENTS OF BITUMINOUS BASE COURSE IN SECTION 406 OF THE STANDARD SPECIFICATIONS AND THE TOP LIFT OF 2 INCHES SHALL MEET THE REQUIREMENTS OF BITUMINOUS CONCRETE SURFACE COURSE, MIXTURE C, CLASS I, TYPE 2 OF SECTION 406 OF THE STANDARD SPECIFICATIONS.

THIS WORK WILL BE PAID FOR AT THE CONTRACT UNIT PRICE PER METRIC TON (TON) FOR "INCIDENTAL BITUMINOUS SURFACING" WHICH SHALL INCLUDE ALL MATERIALS, EQUIPMENT, AND LABOR INVOLVED.



SECTION E - E ENTRANCE TYPICAL SECTION

NOTE 1: WIDTH OF ENTRANCE MAY BE INCREASED AT THE PIPE CULVERT DUE TO THE DITCHLINE BEING LOCATED IN THE ENTRANCE FLARE AREA.

ALL DIMENSIONS ARE IN INCHES UNLESS OTHERWISE SHOWN.

REVISIONS		ILLINOIS DEPARTMENT OF TRANSPORTATION
NAME	DATE	
		<p><b>DETAILS FOR RURAL ENTRANCE &amp; MAILBOX TURNOUT</b></p> <p>DRAWN BY PRL CHECKED BY LDB</p>





