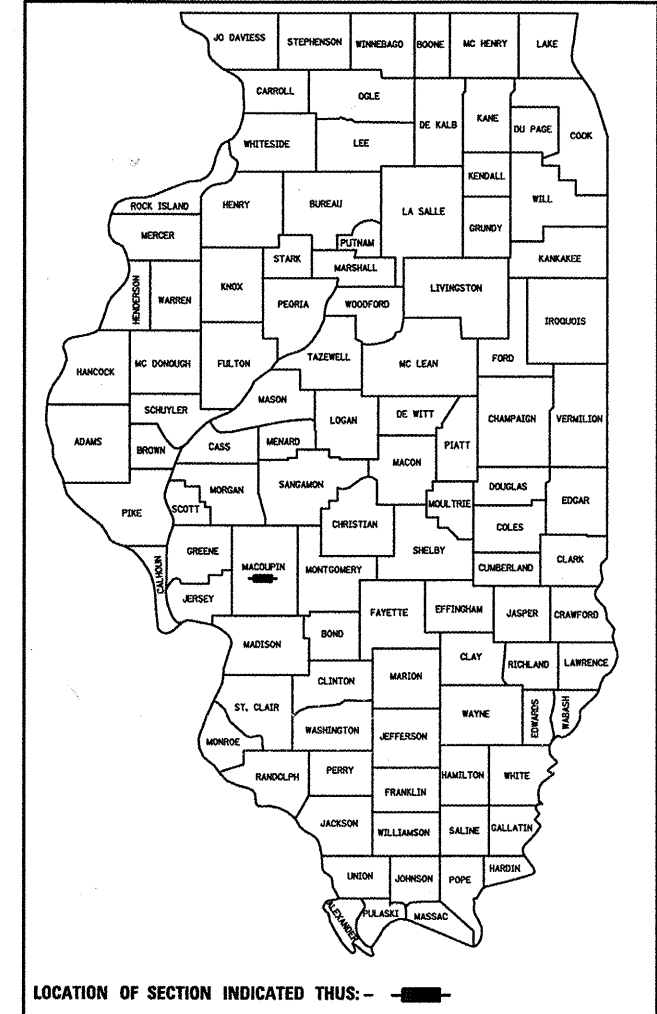


F.A.P. RTE.	SECTION	COUNTY	TOTAL SHEETS	SHEET NO.
325	114 (B-1)	MACOUPIN	57	1
		ILLINOIS	CONTRACT NO. 72646	

★ 57+3=60

D-96-565-03

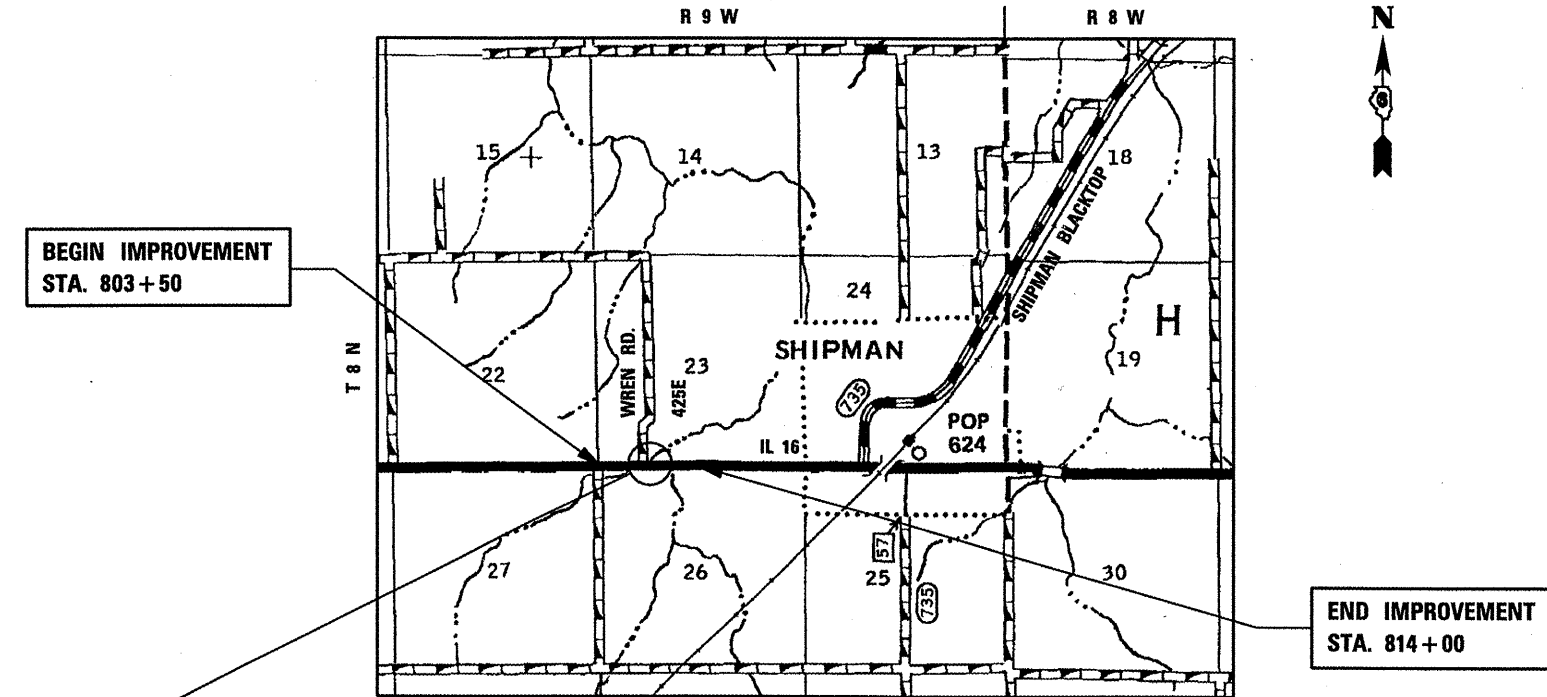
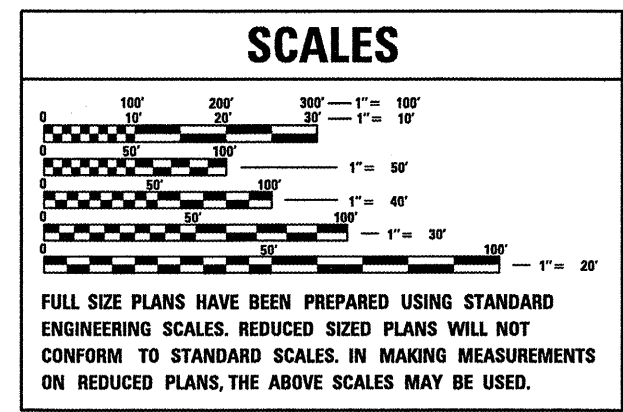


STATE OF ILLINOIS  
DEPARTMENT OF TRANSPORTATION  
DIVISION OF HIGHWAYS  
**PROPOSED  
HIGHWAY PLANS**  
F.A.P. ROUTE 325 (IL RTE 16)  
SECTION 114 B-1  
PROJECT: ACF-0325(052)  
STRUCTURE REPLACEMENT  
MACOUPIN COUNTY

C-96-507-09

SHEET No.	DESCRIPTION
1	COVER SHEET
2	GENERAL NOTES
3 - 7	SUMMARY OF QUANTITIES
8 - 10	SCHEDULE OF QUANTITIES
11	TYPICAL SECTIONS
12	ALIGNMENT, TIES & BENCHMARKS
13 - 25	MAINTENANCE OF TRAFFIC PLANS
26	WIDTH RESTRICTION SIGNING DETAIL
27 - 30	PLAN AND PROFILE SHEETS
31	INTERSECTION DETAILS
32 - 38	STORM WATER POLLUTION PREVENTION PLANS
39 - 43	CULVERT DETAILS
44 - 55	CROSS SECTIONS - IL 16
56 - 57	CROSS SECTIONS - WREN ROAD

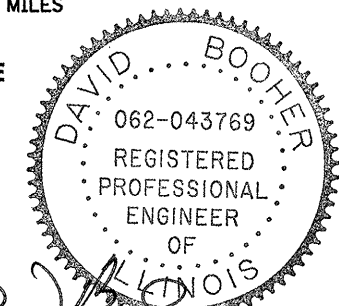
I.D.O.T. STANDARDS		
000001-05	635006-03	701901-01
001001-02	635011-02	704001-06
001006	666001-01	729001-01
280001-05	701001-02	780001-02
482011-03	701201-03	781001-03
542301-02	701306-02	805001-01
606101-04	701321-10	BLR 21-8
630001-08	701326-03	



**EX STRUCTURE No. 059-7000**  
10x10 REINF. CONC. BOX CULVERT  
PR STRUCTURE No. 059-7102  
STA. 808 + 76.30 CAST-IN-PLACE  
10' x 10' CONCRETE BOX CULVERT  
123'-0 34" OUT-TO-OUT OF HEADWALLS  
43 LT. FORWARD SKEW



GROSS LENGTH OF PROJECT = 1,050 FEET = 0.199 MILE  
NET LENGTH OF PROJECT = 1,050 FEET  
AVERAGE DAILY TRAFFIC = 3200 (2005)  
PV = 2875  
SU = 100  
MU = 225



DAVID R. BOOHER ILLINOIS P.E. 062-043769 DATE 10-20-09  
EXPIRES 11 / 30 / 2009

STATE OF ILLINOIS  
DEPARTMENT OF TRANSPORTATION  
DIVISION OF HIGHWAYS

SUBMITTED October 21, 2009  
Ray J. Dinkoff  
DEPUTY DIRECTOR OF HIGHWAYS, REGION ENGINEER

December 4, 2009  
Charles J. Ingersoll  
ENGINEER OF DESIGN AND ENVIRONMENT

December 4, 2009  
Christine M. Reed  
DIRECTOR OF HIGHWAYS/CHIEF ENGINEER

**PRINTED BY THE AUTHORITY  
OF THE STATE OF ILLINOIS**

**ie consultants**  
IE CONSULTANTS, INC.  
6420 SOUTH SIXTH STREET  
SPRINGFIELD, ILLINOIS 62712  
TEL. (217) 529-8027  
FAX (217) 529-4543  
IESPRINGFIELD@IE-CONSULTANTS.COM  
WWW.IE-CONSULTANTS.COM

CALL **J.U.L.I.E.** (JOINT UTILITY LOCATION INFORMATION FOR EXCAVATORS)  
48 Hours (2 working days) Before You Dig.  
TOLL FREE: 1 (800) 892-0123

CONTRACT NO. 72646

Rev.