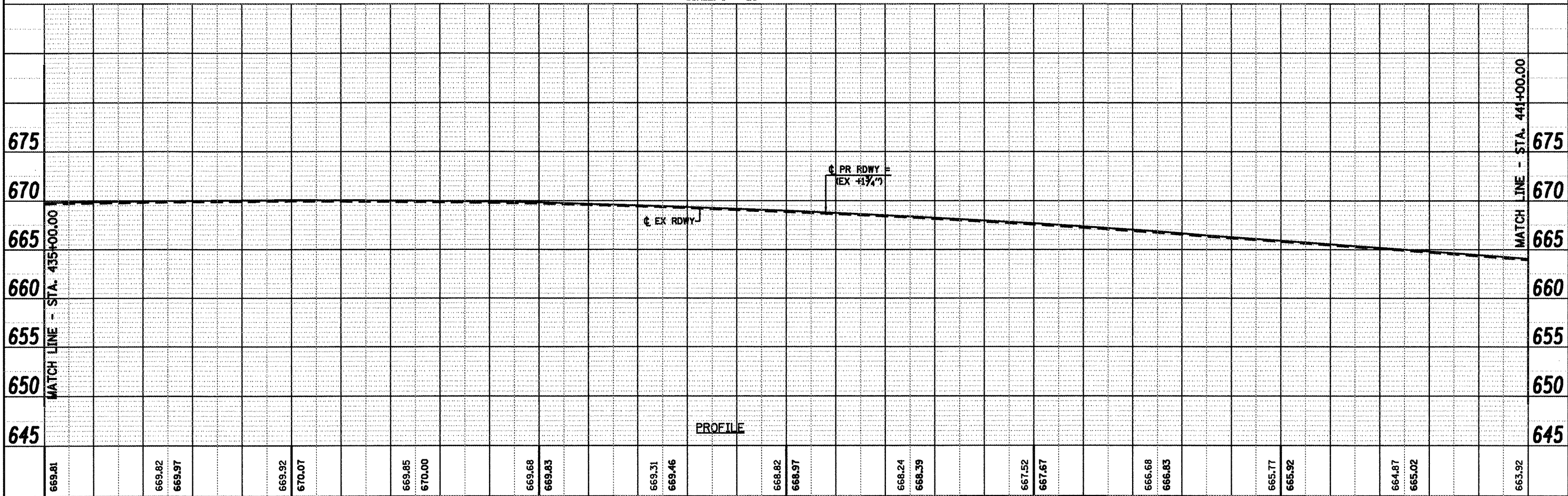
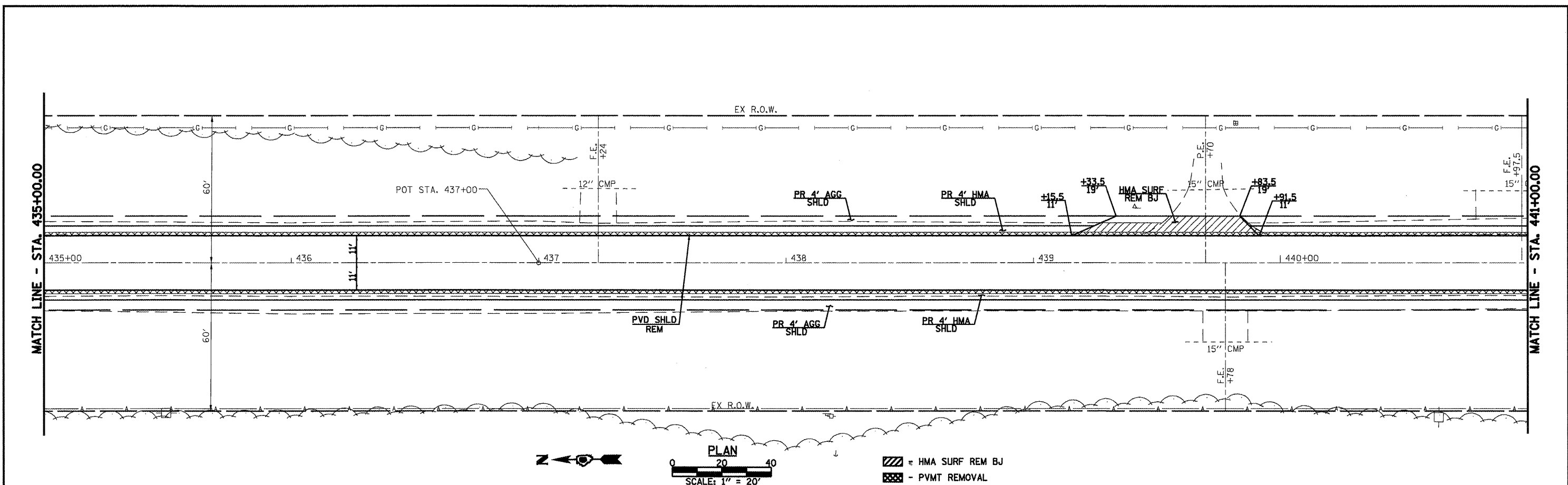


DATE	
BY	
SURVEYED	
PLOTTED	
CHECKED	
NO. OF WAY CHECKED	
NOTE BOOK NO.	
CADD FILE NAME	

DATE	
BY	
PROF ILE	
SURVEYED	
PLOTTED	
CHECKED	
NO. OF WAY CHECKED	
NOTE BOOK NO.	
STRUCTURE NOTATION CHRG	



435+00	669.81	669.82	669.97	669.92	670.07	669.85	670.00	669.68	669.83	669.31	669.46	668.82	668.97	668.24	668.39	667.52	667.67	666.68	666.83	665.77	665.92	664.87	665.02	663.92	441+00														
FILE NAME =	USER NAME = madonnavj		DESIGNED -	REVISOR -		CHECKED -		REVISOR -		DRAWN -		REVISOR -		CHECKED -		REVISOR -		SCALE: 1" = 20'		SHEET NO. 1 OF 4 SHEETS		STA. 435+00.00 TO STA. 441+00.00		F.A.P. RTE. 662		SECTION DW-3,RS-11		COUNTY MACOUPIN		TOTAL SHEETS 102		SHEET NO. 35							
S:\PROJ ENGR 1 (Negangard)\Dust Squad\FAP										662 (IL 4) Henderson.pdf\CAAD Sheets\067273										Allen Henderson & Associates, Inc. Civil and Structural Engineers Springfield, IL. 62703 Phone: (217)544-8033 IL. Design Firm No. 184-001907										CONTRACT NO. 72765									
PLOT SCALE = 48.0000' / IN.										PLOT DATE = Aug-17-2009 04:25:57PM										ILLINOIS FED. AID PROJECT																			