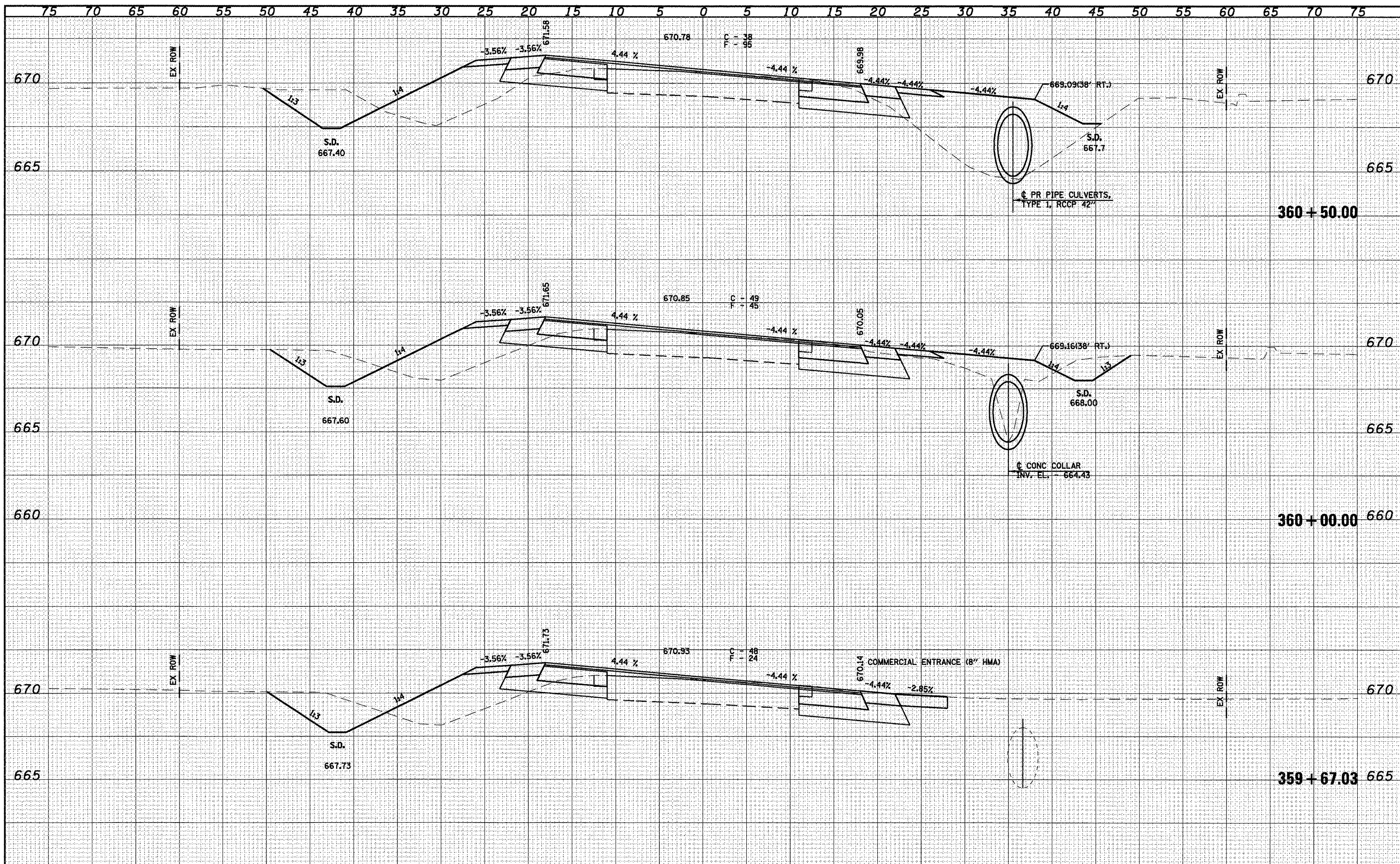


DATE	
BY	
FINL SURVEY	SURVEYED
NOTE BOOK	PLOTTED
NO.	TEMPLATE
	AREAS CHECKED

DATE	
BY	
ORIGINAL SURVEY	SURVEYED
NOTE BOOK	PLOTTED
NO.	TEMPLATE
	AREAS CHECKED



FILE NAME =	USER NAME = medonievj	DESIGNED -	REVISED -	<p>Allen Henderson &amp; Associates, Inc. Civil and Structural Engineers Springfield, IL. 62703 Phone: (217)544-8033 IL Design Firm No. 184-001907</p>	CROSS SECTIONS		F.A.P. RTE.	SECTION	COUNTY	TOTAL SHEETS	SHEET NO.
	PLOT SCALE = 10.0000' / IN.	DRAWN -	REVISED -		662	D(W-3,RS-11,CR)	MACOUPIN	102	78		
	PLOT DATE = Aug-17-2009 04:07:48PM	CHECKED -	REVISED -		SCALE: SHEET NO. 6 OF 19 SHEETS STA. 359+67.03 TO STA. 360+50.00		CONTRACT NO. 72765				
		DATE -	REVISED -		FED. ROAD DIST. NO.		ILLINOIS FED. AID PROJECT				
<small>5:\PROJ\ENGR 1\Henderson\Draws\Squad\FAP 662 (IL 4) Henderson pdf\CADD Sheets\0672765-ehf-rs01.dgn</small>											