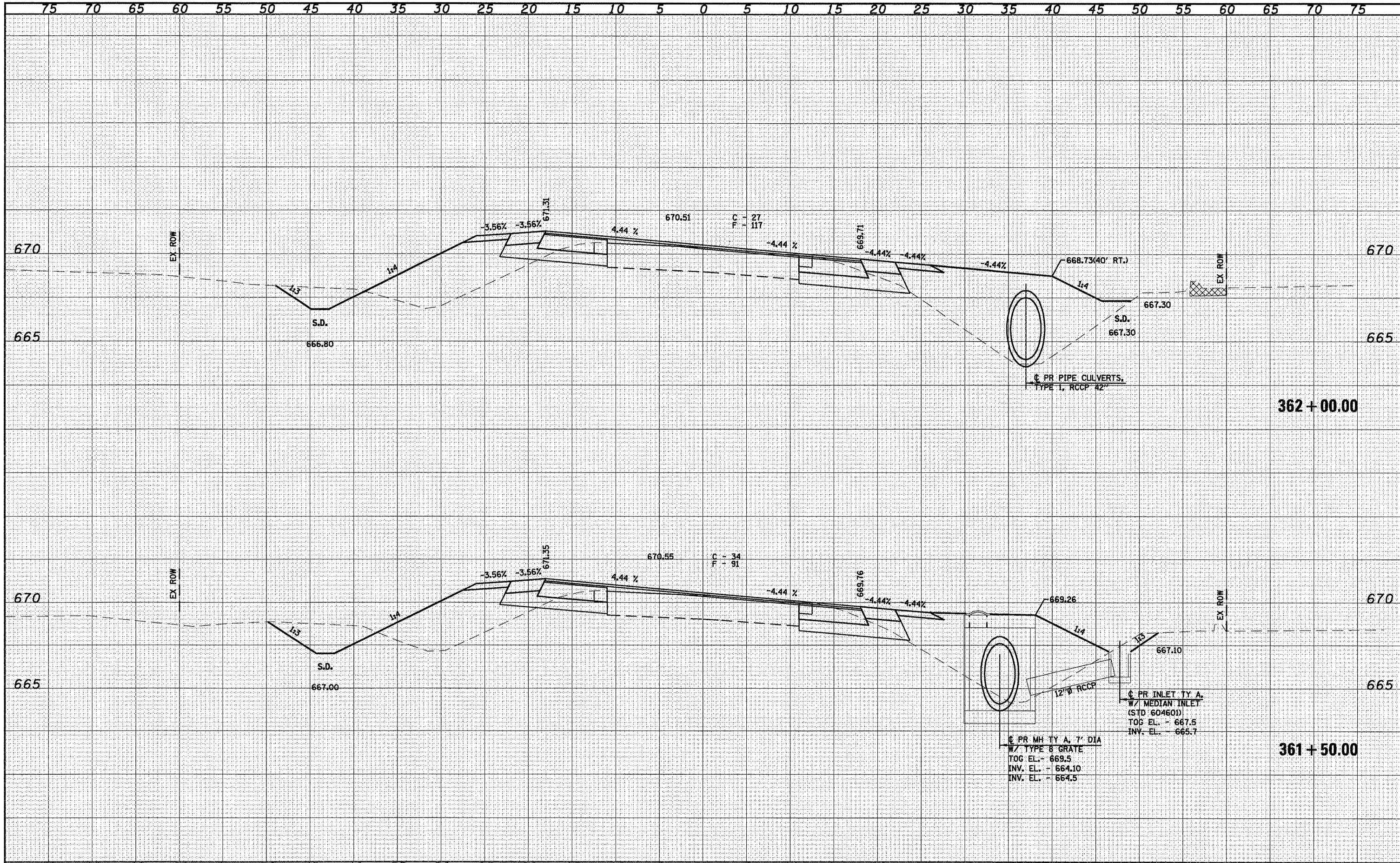


| | | |
|--------------|---------------|------|
| FINAL SURVEY | SURVEYED | DATE |
| NOTE BOOK | PLOTTED | BY |
| NO. | TEMPLATE | |
| | AREAS CHECKED | |

| | | |
|-----------------|---------------|------|
| ORIGINAL SURVEY | SURVEYED | DATE |
| NOTE BOOK | PLOTTED | BY |
| NO. | TEMPLATE | |
| | AREAS CHECKED | |



FILE NAME =
 USER NAME = madonnavj
 PLOT SCALE = 10.0000' / IN.
 PLOT DATE = Aug-17-2009 04:07:56PM

| | |
|------------|-----------|
| DESIGNED - | REVISED - |
| DRAWN - | REVISED - |
| CHECKED - | REVISED - |
| DATE - | REVISED - |

Allen Henderson & Associates, Inc.
 Civil and Structural Engineers Springfield, IL.
 62703 Phone: (217)544-8033 IL Design Firm
 No. 184-001907

CROSS SECTIONS
 SCALE: SHEET NO. 8 OF 19 SHEETS STA. 361+50.00 TO STA. 362+00.00

| | | | | |
|---------------------|----------------|----------|---------------------------|-----------|
| F.A.P. RTE. | SECTION | COUNTY | TOTAL SHEETS | SHEET NO. |
| 662 | DIW-3,RS-11,CR | MACOUPIN | 102 | 80 |
| FED. ROAD DIST. NO. | | | ILLINOIS FED. AID PROJECT | |
| | | | CONTRACT NO. 72765 | |

S:\PROJ ENGR 1 (Nogans-d\Draws\Squad\FAP 662 (IL 4) Henderson pdf\CADD Sheets\0672765-80-1.dwg