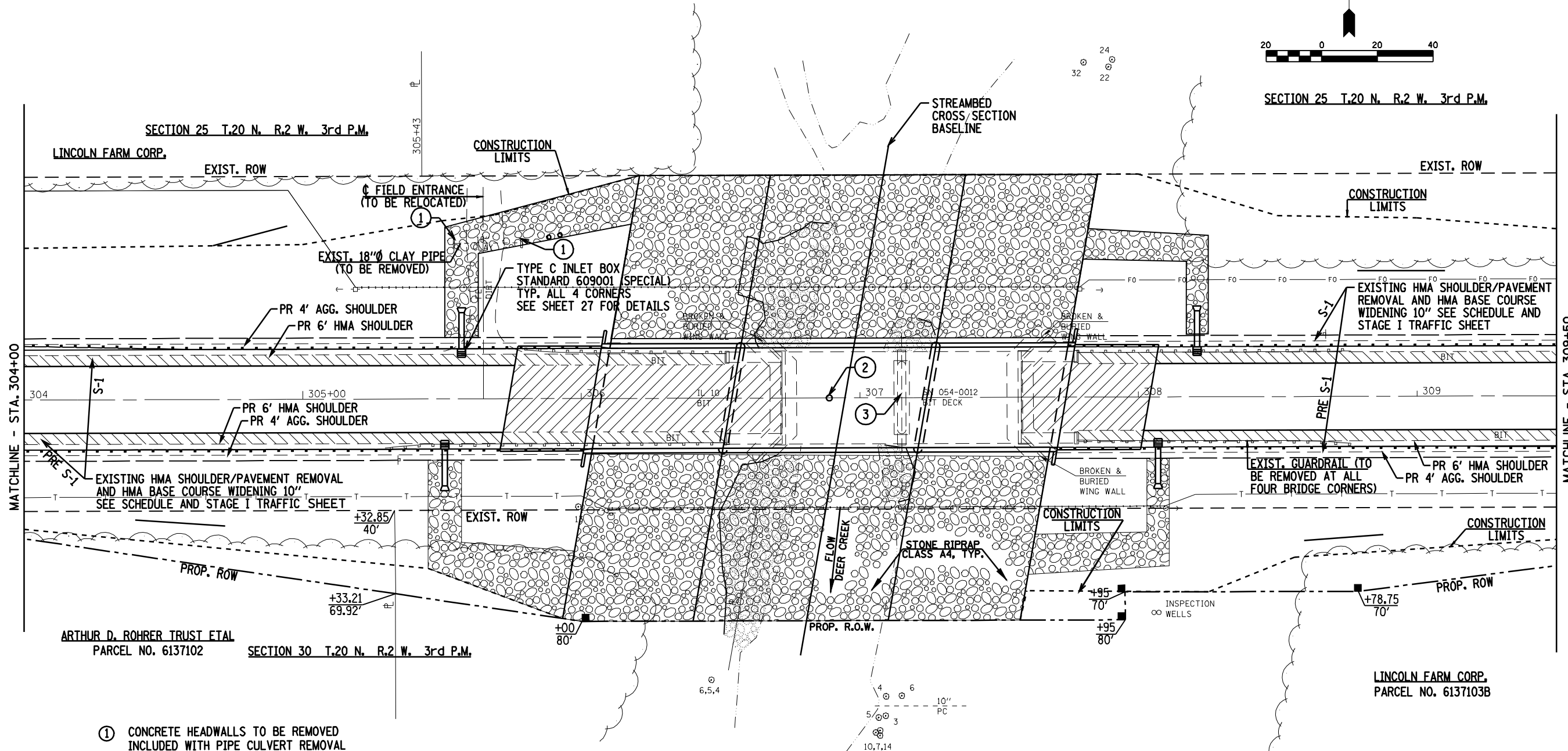


SECTION 25 T.20 N. R.2 W. 3rd P.M.



- ① CONCRETE HEADWALLS TO BE REMOVED INCLUDED WITH PIPE CULVERT REMOVAL
- ② STA. 306+89 -  $\dot{C}$  RDWY. AT  $\dot{C}$  STRUCTURE PROPOSED STRUCTURE: THREE SPAN PRECAST PRESTRESSED CONCRETE BEAM BRIDGE SUPPORTING AN 8" CONCRETE DECK WITH INTEGRAL CONCRETE ABUTMENTS AND SOLID CONCRETE PIERS. 170'-0" BK.-BK. ABUTMENTS, 36'-0" CLEAR DECK WIDTH, 39'-2" OUT TO OUT OF PARAPET, 10° SKEW LT. FORWARD.
- ③ EXISTING STRUCTURE NO. 054-0012 TO BE REMOVED AND REPLACED WITH PROPOSED STRUCTURE NO. 054-0514, UNDER STAGED CONSTRUCTION, SEE DETAILS

USER NAME:	DESIGNED -	REVISED -
	DRAWN -	REVISED -
PLOT SCALE:	CHECKED -	REVISED -
PLOT DATE:	DATE -	REVISED -

**STATE OF ILLINOIS  
DEPARTMENT OF TRANSPORTATION**

<b>PLAN SHEET</b>			
<b>STA. 304+00 TO STA. 309+50</b>			
SCALE:	SHEET NO.	OF SHEETS	STA. TO STA.

F.A.P. RTE.	SECTION	COUNTY	TOTAL SHEETS	SHEET NO.
717	109B-3	LOGAN	73	22
CONTRACT NO. 72A88				
FED. ROAD DIST. NO.	ILLINOIS	FED. AID PROJECT		