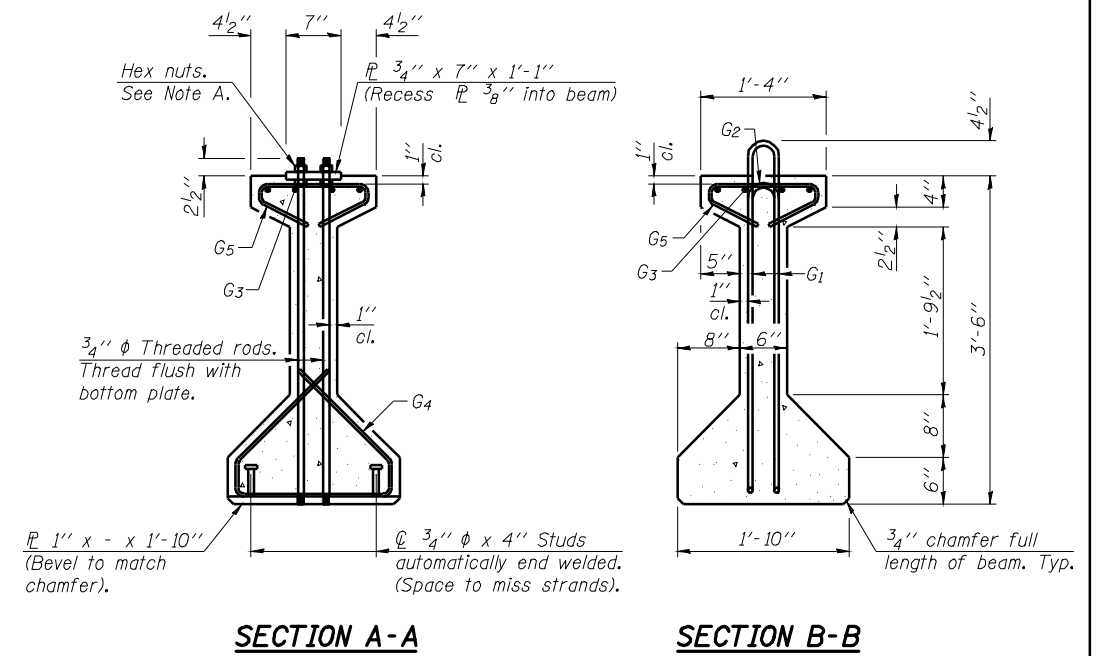


**ELEVATION OF BEAM**  
(Showing reinforcement & dimensions)

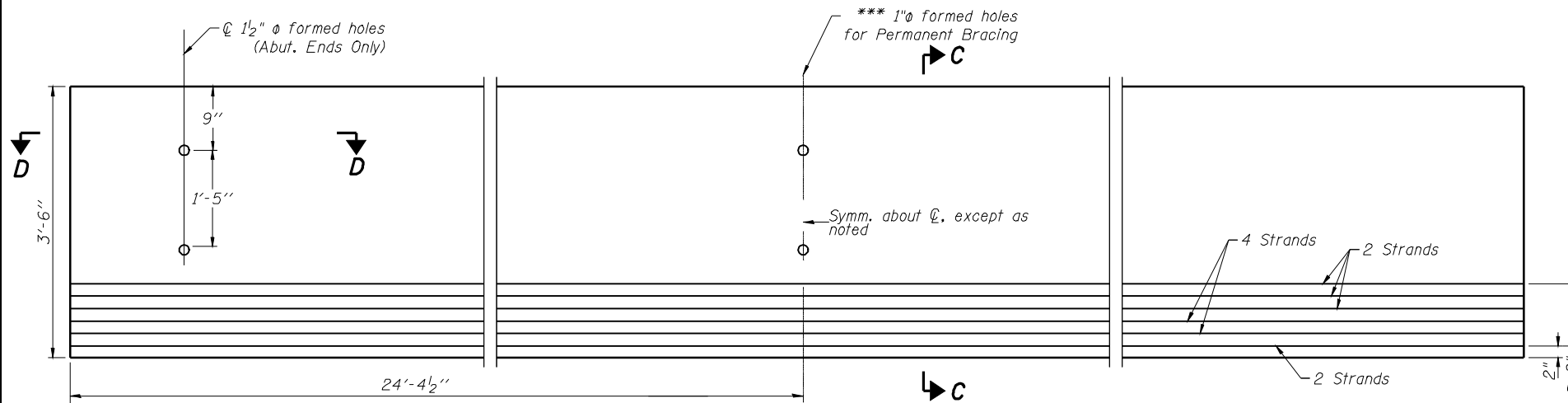
\*3 spaces at 3" = 9"  
 \*\*4-3/4" φ threaded dowel rods at 3' cts., Each Face.  
 \*\*\* see details on sheet 16 of 27 for number and location of holes.

2-#8 G6 bar assembly with threaded coupler splice at pier only. (See sheet 19 of 27 for details).  
 Note A:  
 Hex nuts (top and bottom) with lock washers (top). Only tighten sufficiently to compress lock washers.

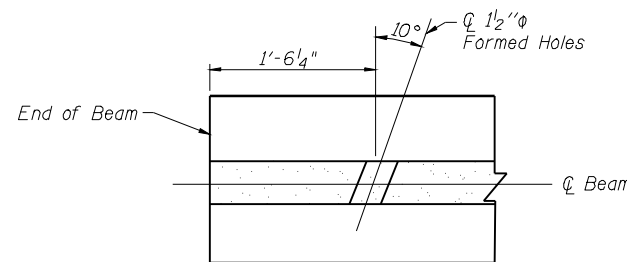


**SECTION A-A**

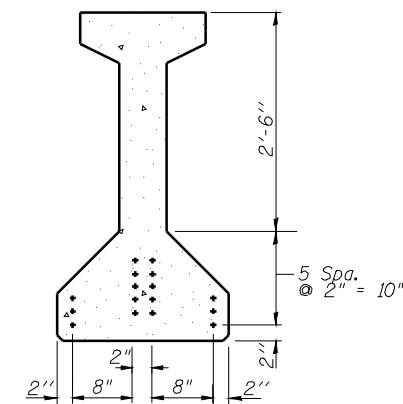
**SECTION B-B**



**ELEVATION OF BEAM**  
(Showing prestressing steel)



**SECTION D-D**



**SECTION C-C**

**\*\*\*BAR LIST  
ONE BEAM ONLY**

Bar	No.	Size	Length	Shape
G <sub>1</sub>	81	#4	8'-5"	⊥
G <sub>2</sub>	10	#4	6'-8"	⊥
G <sub>3</sub>	8	#6	25'-8"	⊥
G <sub>4</sub>	38	#3	4'-11"	⊥
G <sub>5</sub>	49	#3	2'-6"	⊥
G <sub>6</sub>	2	#8	6'-6"	⊥

\*\*\*For information only

Notes:  
 See sheet 19 of 27 for additional details and Bill of Material.  
 Required release strength, f'ci, shall be 5000 psi.

**SPAN 1 & 3  
42" PPC I-BEAM  
STRUCTURE NO. 054-0514**

USER NAME:	DESIGNED - RTM	REVISED -	<b>STATE OF ILLINOIS DEPARTMENT OF TRANSPORTATION</b>	<b>SPAN 1 &amp; 3 42" PPC I-BEAM</b>			F.A.P. RTE.	SECTION	COUNTY	TOTAL SHEETS	SHEET NO.
PLOT SCALE:	DRAWN - MSD	REVISED -		717	109B-3	LOGAN	73	52			
PLOT DATE:	CHECKED - KEB	REVISED -		SCALE: SHEET NO. 17 OF 27 SHEETS STA. TO STA.			CONTRACT NO. 72A88				
	DATE -	REVISED -		FED. ROAD DIST. NO.		ILLINOIS	FED. AID PROJECT				