

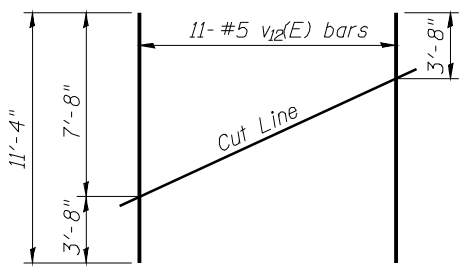
*Between beams 3 and 4 provide:
2 - v11(E) in Stage I and
3 - v11(E) in Stage II

PILE DATA

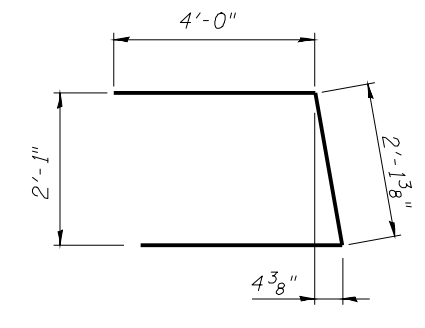
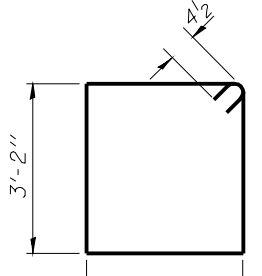
Type: Metal Shell 14 in. dia. x 0.25 in. walls
Nominal Required Bearing: 320 kips
Factored Resistance Available: 160 kips
Est. Length: 32 ft.
No. Production Piles: 5
No. Test Piles: 1

NOTES:

The contractor shall limit the pile hammer size selected considering the relatively high soil strengths indicated in the borings and avoid overdriving the piles beyond their nominal required bearing to prevent pile damage during driving.



Order v12(E) full length. Cut as shown and use remainder of bars in opposite face.



BILL OF MATERIAL

Bar	No.	Size	Length	Shape
h10(E)	60	#6	13'-7"	—
p10(E)	10	#8	19'-0"	—
p11(E)	10	#8	20'-0"	—
s12(E)	38	#4	11'-5"	□
u10(E)	8	#6	10'-1"	┘
v11(E)	72	#5	4'-4"	—
v12(E)	22	#5	11'-4"	—
Structure Excavation		Cu. Yd.	113.9	
Concrete Structures		Cu. Yd.	18.0	
Reinforcement Bars, Epoxy Coated		Pound	3,260	
Furnishing Metal Shell Piles, 14" x 0.250"		Foot	160	
Driving Piles		Foot	160	
Test Pile Metal Shells		Each	1	
Bar Splicers		Each	10	

For details of Bar Splicers, see sheet 24 of 27.
For details of piles, see sheet 25 of 27.

**WEST ABUTMENT
STRUCTURE NO. 054-0514**

USER NAME:	DESIGNED - RTM	REVISED -	STATE OF ILLINOIS DEPARTMENT OF TRANSPORTATION		WEST ABUTMENT			F.A.P. RTE.	SECTION	COUNTY	TOTAL SHEETS	SHEET NO.
PLOT SCALE:	DRAWN - MSD	REVISED -						717	109B-3	LOGAN	73	56
PLOT DATE:	CHECKED - KEB	REVISED -						CONTRACT NO. 72A88				
	DATE -	REVISED -						FED. ROAD DIST. NO.	ILLINOIS	FED. AID PROJECT		