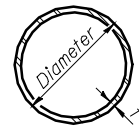
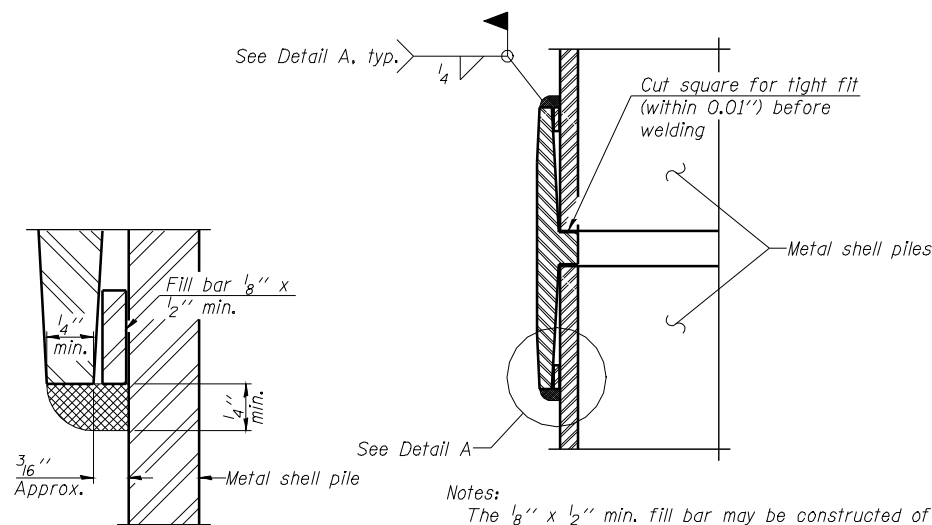


F.A.P. ROUTE NO.	SECTION	COUNTY	TOTAL SHEETS	SHEET NO.
717	109B-3	LOGAN	73	49
FED. ROAD DIST. NO.	ILLINOIS	PROJECT		



METAL SHELL PILE TABLE

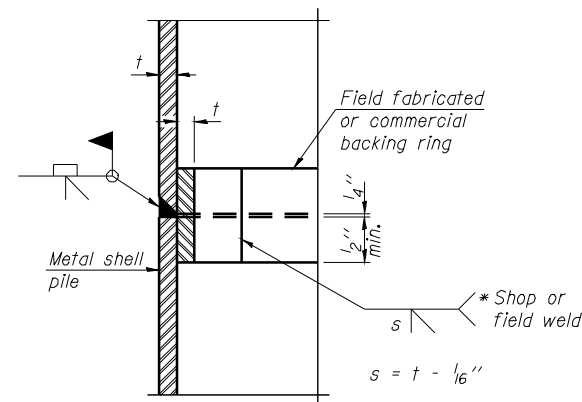
Designation and outside diameter	Wall thickness t	Weight per foot (Lbs./ft.)	Inside volume (yd. ³ /ft.)
PP12	0.179"	22.60	0.0274
PP12	0.250"	31.37	0.0267
PP14	0.250"	36.71	0.0368
PP14	0.312"	45.61	0.0361



DETAIL A

Notes:
The 1/8" x 1/2" min. fill bar may be constructed of 2 bars with a 1/8" max. gap between them.
Pile segments shall be driven to solid contact with splicer before welding.

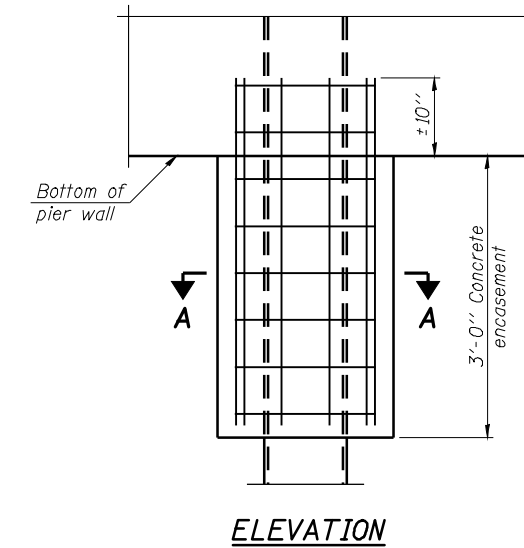
WELDED COMMERCIAL SPLICE



COMPLETE PENETRATION WELD SPLICE

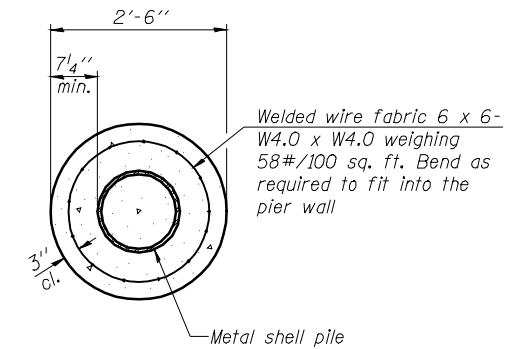
* Field fabricated backing ring may be made from pile shell by removing segment to allow reducing circumference and vertically rejoin with partial joint penetration weld.

Note:
The metal shell piles shall be according to ASTM A 252 Grade 3.



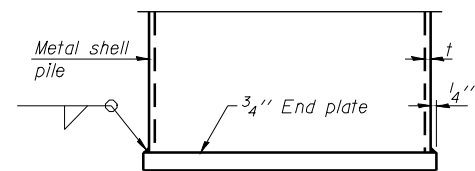
ELEVATION

CONCRETE ENCASEMENT AT PIERS

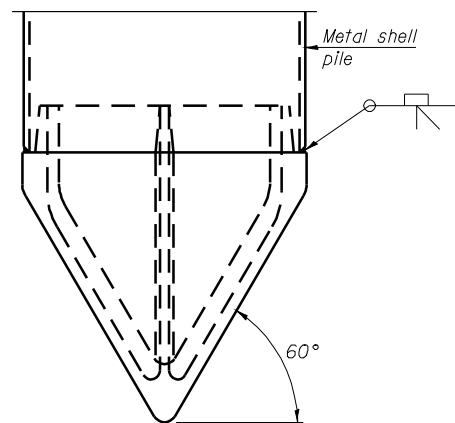


SECTION A-A

Note:
Forms for encasement may be omitted when soil conditions permit.



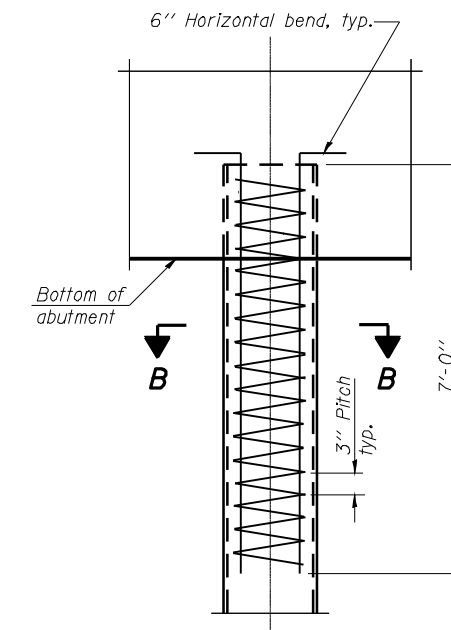
END PLATE ATTACHMENT



METAL SHELL PILE SHOE ATTACHMENT

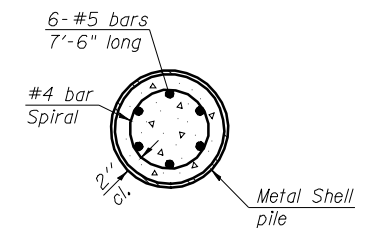
(See Note A)

Note A:
When called for on the plans, the Contractor shall furnish metal shell pile shoes consisting of a single piece conical pile point as shown. The pile shoes shall be cast in one piece steel according to either ASTM A 148 Grade 90-60 or AASHTO M 103 Grade 65-35 and shall provide full bearing over the full circumference of the metal shell pile. The pile shoe shall have tapered leads to assure proper alignment and fitting and shall be secured to the pile with a circumferential weld.



ELEVATION

METAL SHELL REINFORCEMENT AT ABUTMENTS



SECTION B-B

**METAL SHELL PILE DETAILS
IL ROUTE 10 OVER DEER CREEK
F.A.P. ROUTE 717 SECTION 109(B-3)
LOGAN COUNTY STATION 306+89
STRUCTURE NO. 054-0514**

USER NAME:	DESIGNED - RTM	REVISED -	STATE OF ILLINOIS DEPARTMENT OF TRANSPORTATION	METAL SHELL PILE DETAILS			F.A.P. RTE.	SECTION	COUNTY	TOTAL SHEETS	SHEET NO.
PLOT SCALE:	DRAWN - MSD	REVISED -					717	109B-3	LOGAN	73	60
PLOT DATE:	CHECKED - KEB	REVISED -		SCALE: SHEET NO. 25 OF 27 SHEETS STA. TO STA.			CONTRACT NO. 72A88		FED. ROAD DIST. NO. ILLINOIS FED. AID PROJECT		
	DATE -	REVISED -									