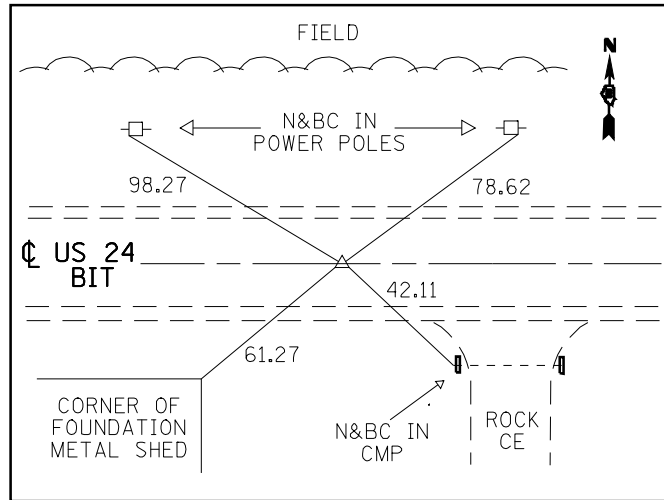
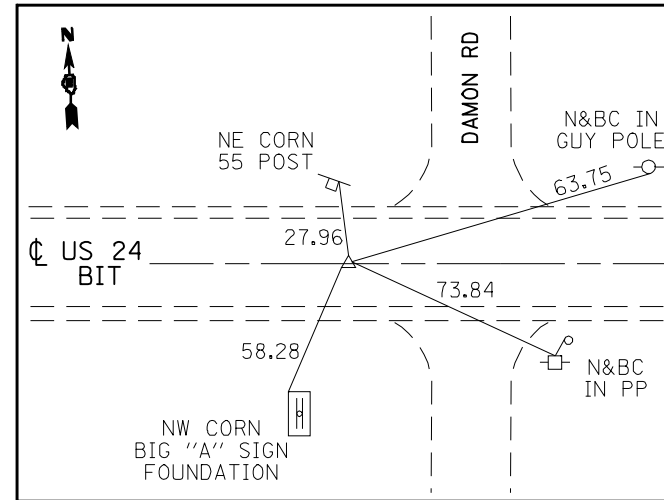


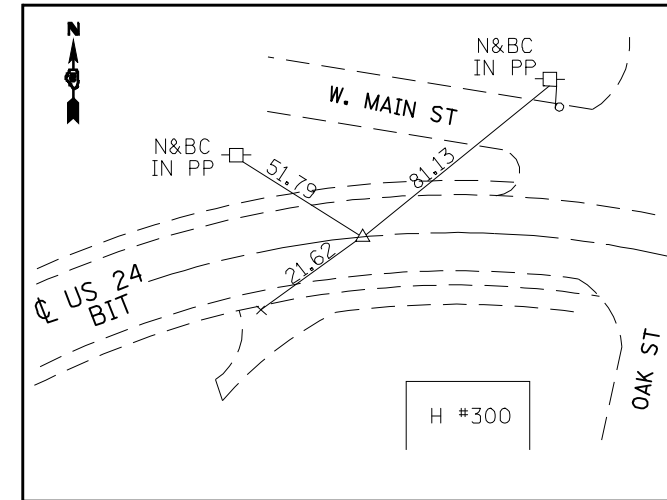
POT #1 STA. 627+88.33
(PK N&BC W/ CHSLD "X")



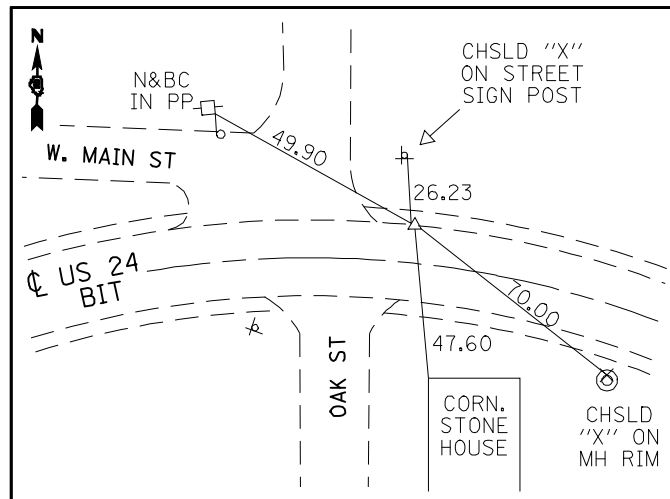
PI #609 STA. 638+13.35
(PK N&BC W/ CHSLD "X")



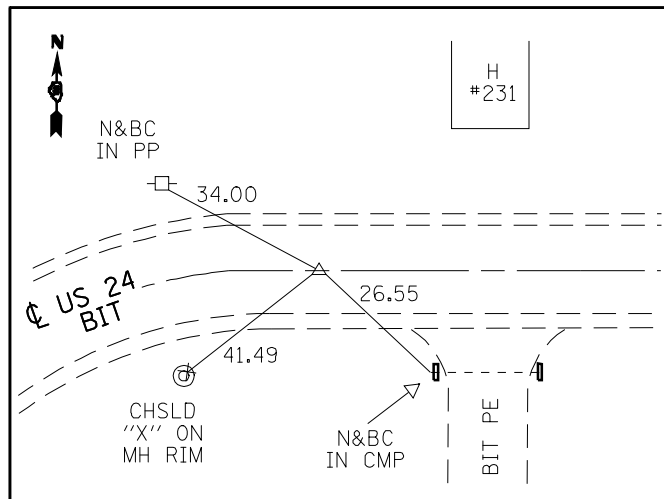
PI #608 STA 651+69.75
(PK N&BC W/ CHSLD. "X")



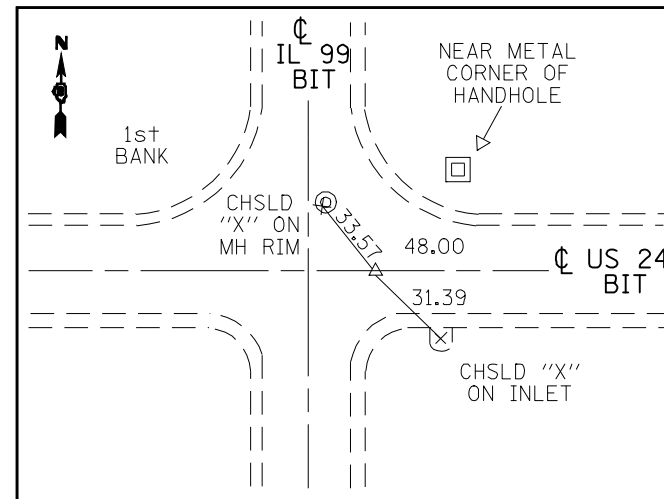
PC #607 STA. 659+71.50
(PK N&BC W/ CHSLD. "X")



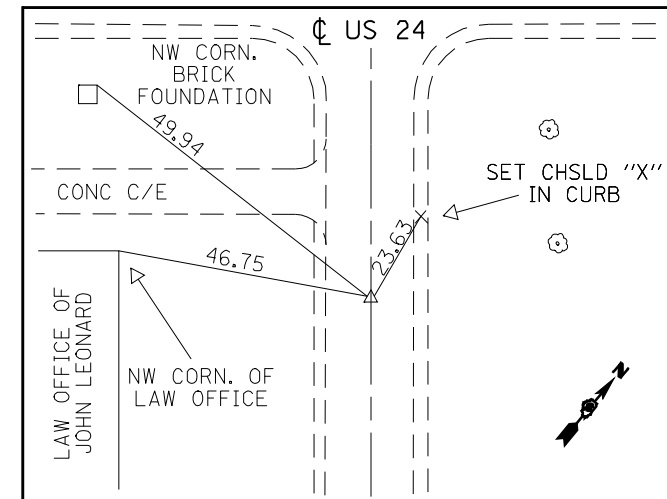
PI #607 STA. 660+74.45
(PK N&BC W/ CHSLD "X")



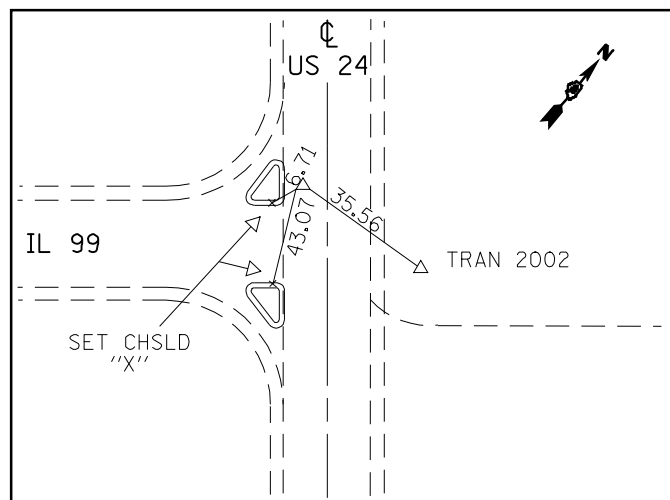
PT #607 STA. 661+ 74.30 BK =
#1607 STA. 659+40.87 AH
(PK N&BC W/ CHSLD. "X")



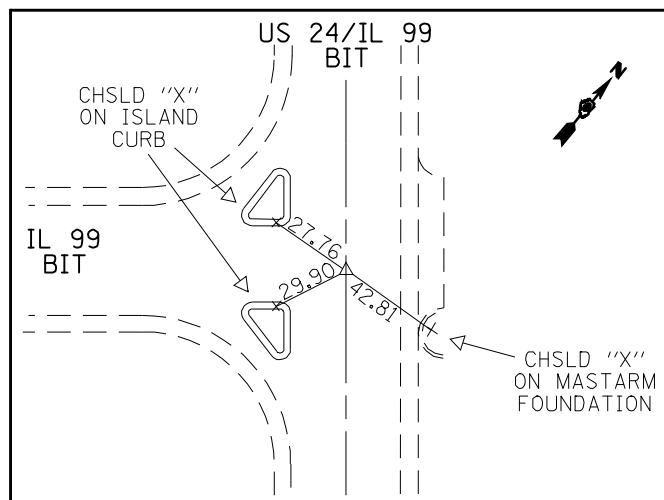
EQN: STA. 668+96.40 BK =
STA. 0+00.00 AH
(PK N&BC W/ CHSLD "X")



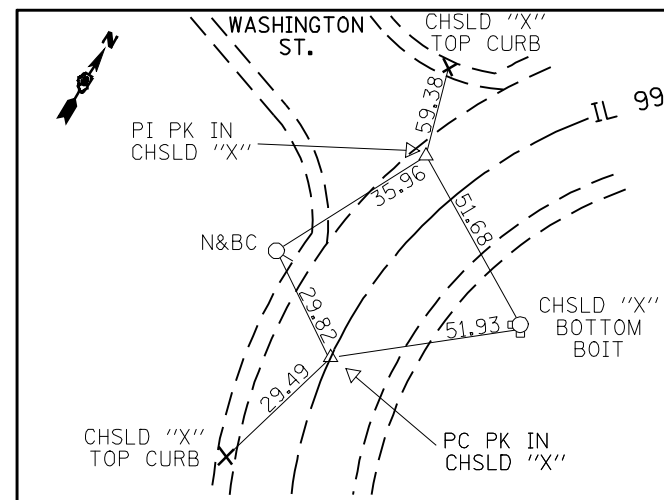
PI STA. 10+71.30
(PK N W/ CHSLD. "X")



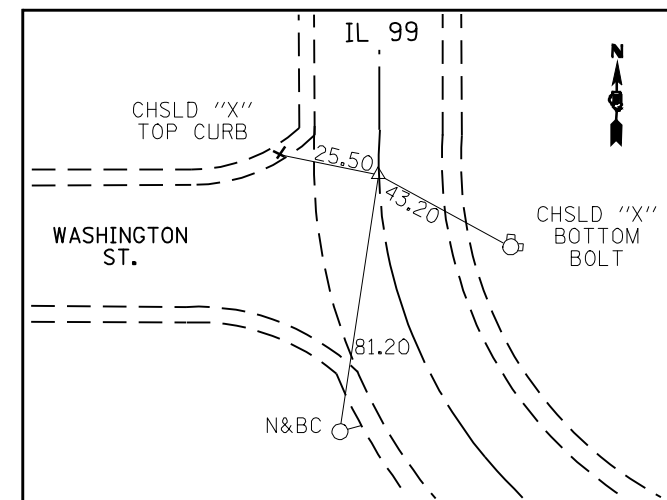
PI STA. 23+26.30
(PK N W/ CHSLD. "X")



STA. 0+11.713 IL 99
STA. 23+45.948 US 24
(PK N&BC W/ CHSLD "X")



PC STA. 24+88.76
PI STA. 25+36.22
(PK IN CHSLD. "X")



PT STA. 25+73.08
(PK IN CHSLD. "X")

FILE NAME =	USER NAME = laughlinr1	DESIGNED -	REVISED -	STATE OF ILLINOIS DEPARTMENT OF TRANSPORTATION	CROSS TIES AND BENCHMARKS		F.A.P. RTE.	SECTION	COUNTY	TOTAL SHEETS	SHEET NO.	
et:\pwork\PWIDOT\LAUGHLINRL\dms20175\672b60-sht-atb.dgn		DRAWN -	REVISED -		SCALE:	SHEET NO. 1 OF 2 SHEETS	STA.	TO STA.	7(W-1,RS-8,N); 9RS-4	BROWN	177	33
		CHECKED -	REVISED -		CONTRACT NO. 72B60							
		DATE -	REVISED -		FED. ROAD DIST. NO. ILLINOIS FED. AID PROJECT							

• FAP 317 (IS 24) & 550 (TI 99)