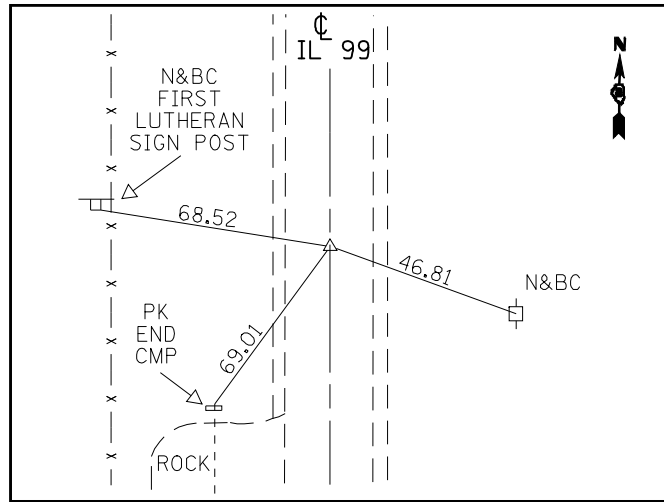
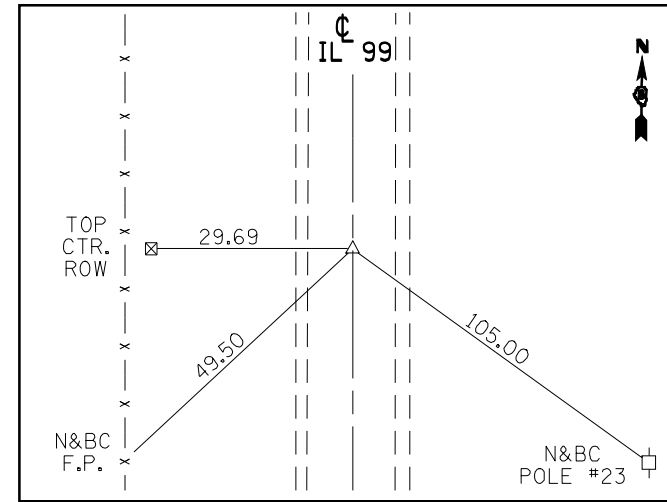


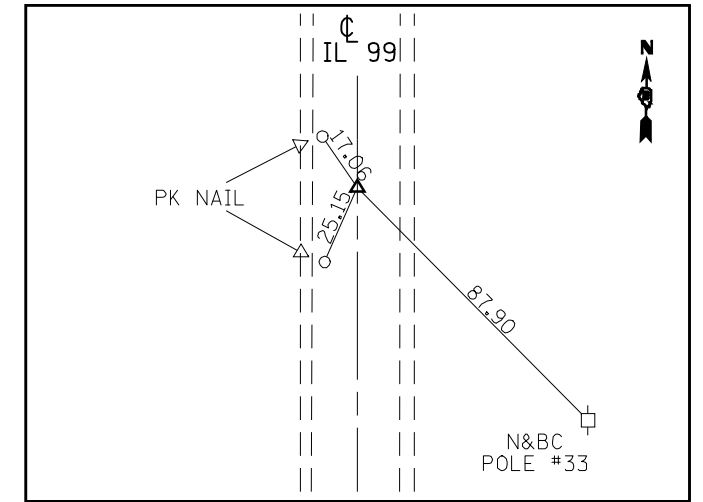
PI STA. 44+35.22
(PK IN CHSLD. "X")



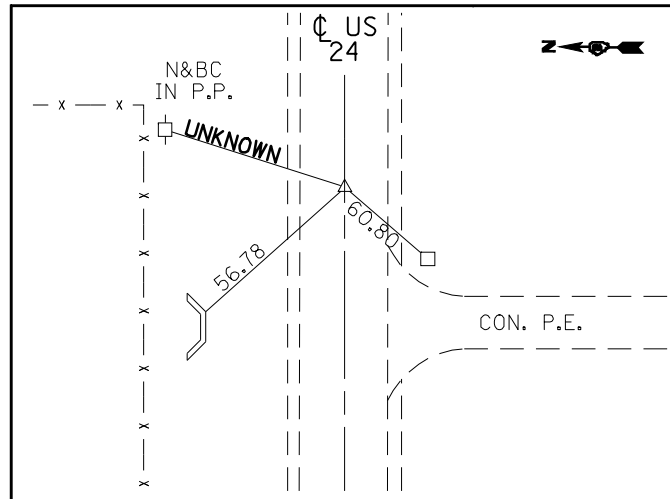
PI STA. 56+01.52
(PK IN CHSLD. "X")



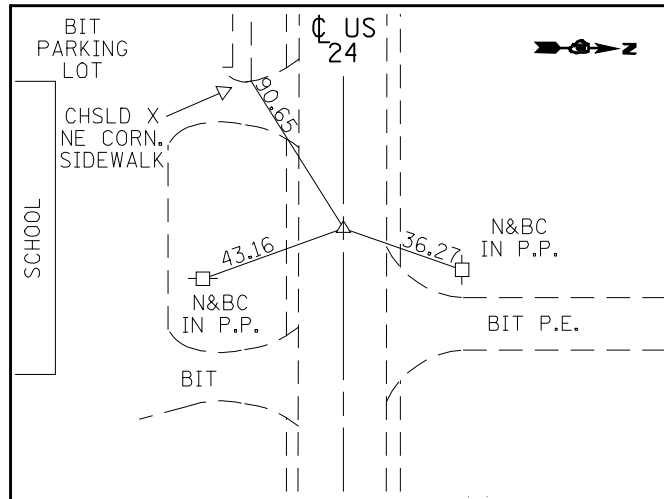
EQN: STA. 59+90.86 BK =
STA. 50+00.00 AH
(PK IN CHSLD. "X")



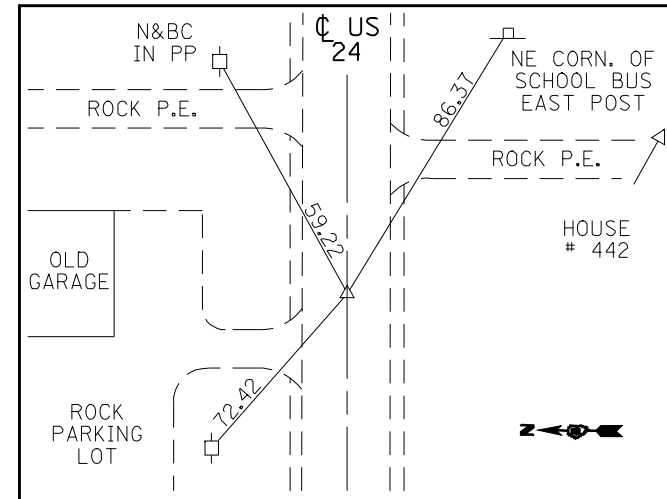
POT STA. 60+01.39
(PK NAIL IN CHSLD. "X")



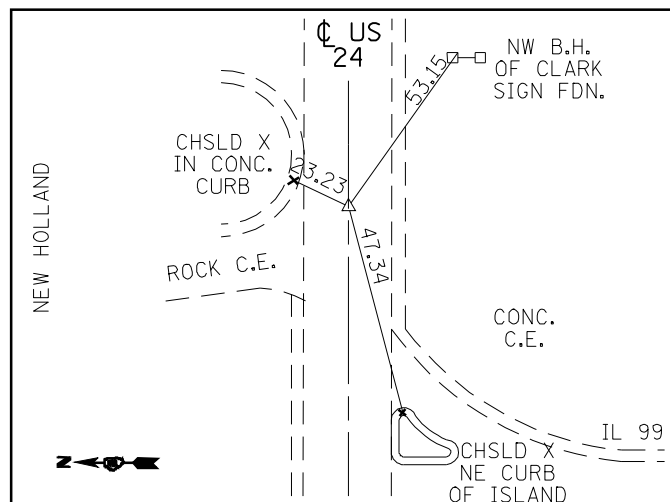
POT STA. 56+52.20
(PK N&BC CHSLD. "X")



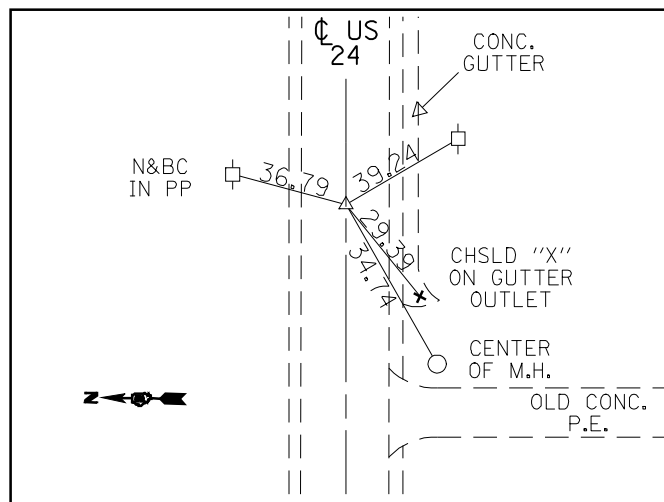
PI STA. 45+36.90
(PK N&BC IN CHSLD. "X")



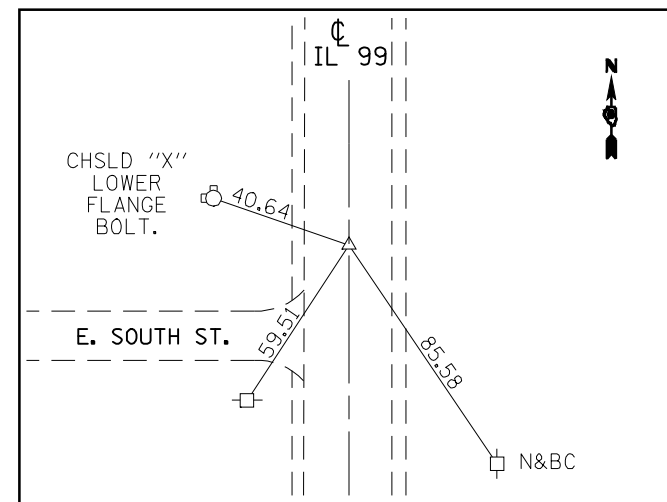
PI STA. 36+64.05
(PK N&BC W/ CHSLD. "X")



PT STA. 24+24.47
(PK N&BC W/ CHSLD. "X")



PC STA 22+25.17
(PK N&BC W/ CHSLD "X")



POT STA 3+70.44
(PK IN CHSLD "X")

- BM #111 : SET CHSLD "X" IN SE FLANGE BOLT OF FIRE HYDRANT BETWEEN HOUSE #209 AND #211 NORTH OF C IN MT. STERLING STA. 17+45.56 ; 30.89 LT. NAVD '88 = 718.98 FT.
- BM #112 : SET CHSLD "□" IN SE CORNER OF CONC FOUNDATION ON MAST ARM SIGNAL @ JCT IL 99 (PITTSFIELD RD) & US 24, NW QUAD STA. 23+22.22 ; 31.14' LT. NAVD '88 = 713.37 FT.
- BM #112A : SET CHSLD "□" ON CURB OF PRIVATE ENT., N. SIDE OF US 24 +/- 2 FT. N. OF BK SIDEWALK, .20 MILES E. OF JCT US 24 / IL 99 SOUTH STA. 33+95.81 ; 40.205 LT. NAVD '88 = 714.958 FT.
- BM #112B : SET CHSLD "□" ON LIGHT POLE FOUNDATION, N. SIDE OF US 24, IN FRONT OF US DEPT. AGRICULTURE, .36 MILES E. OF JCT US24 / IL99 SOUTH STA. 42+65.66 ; 62.6 LT. NAVD '88 = 712.732 FT.
- BM #113: SET CHSLD "X" IN EAST FLANGE BOIT OF FIRE HYDRANT @ SW QUAD INT. E. FRANKLIN ST & IL 99 (PITTSFIELD RD) 0.13 MILE SOUTH ALONG IL 99 FROM JCT. US 24 STA. 7+58.37 ; 34.00 RT. NAVD '88 = 711.74 FT.
- BM #113A : SET CHSLD "X" IN SOUTH FLANGE BOLT OF FIRE HYDRANT @ SE QUAD OF CURRY ST. & CHESTNUT IN MT. STERLING NAVD '88 = 713.55 FT.
- BM #114 : SET "60D" SPIKE NAIL IN LIGHTPOLE @ N.E. QUAD OF INT. OF US 24 & COUNTRY LN. @ 0.20 MILE E. FROM JCT. US 24 & IL 99 WEST INT. NAVD '88 ELEV. = 715.05 FT.
- BM #115 : SET "60D" SPIKE NAIL IN P.P. ON N. SIDE US 24 @ 0.55 MILE E. FROM US 24 & IL 99 SOUTH INTERSECTION NAVD '88 ELEV. = 702.59
- BM #116 : SET CHSLD "□" IN TOP OF 2' X 2' BOX CULVERT H.W., ON THE SOUTH SIDE OF US 24 @ 0.60 MILE E. FROM US 24 & IL 99 SOUTH INTERSECTION NAVD '88 ELEV. = 695.78 FT.

FILE NAME =	USER NAME = laughlinr1	DESIGNED -	REVISED -	STATE OF ILLINOIS DEPARTMENT OF TRANSPORTATION	CROSS TIES AND BENCHMARKS		F.A.P. RTE.	SECTION	COUNTY	TOTAL SHEETS	SHEET NO.
et:\pwork\PWIDOT\LAUGHLINRL\dms20175\672b60-sht-atb.dgn		DRAWN -	REVISED -				7(W-1,RS-8,N); 9RS-4	BROWN	177	34	
PLOT SCALE = 40.0000' / IN.		CHECKED -	REVISED -		CONTRACT NO. 72B60			FED. ROAD DIST. NO.	ILLINOIS FED. AID PROJECT		
PLOT DATE = Oct-07-2009 07:59:56AM		DATE -	REVISED -		SCALE:	SHEET NO. 2 OF 2 SHEETS	STA.	TO STA.	# FAP 117 (115 24) & 550 (11 99)		