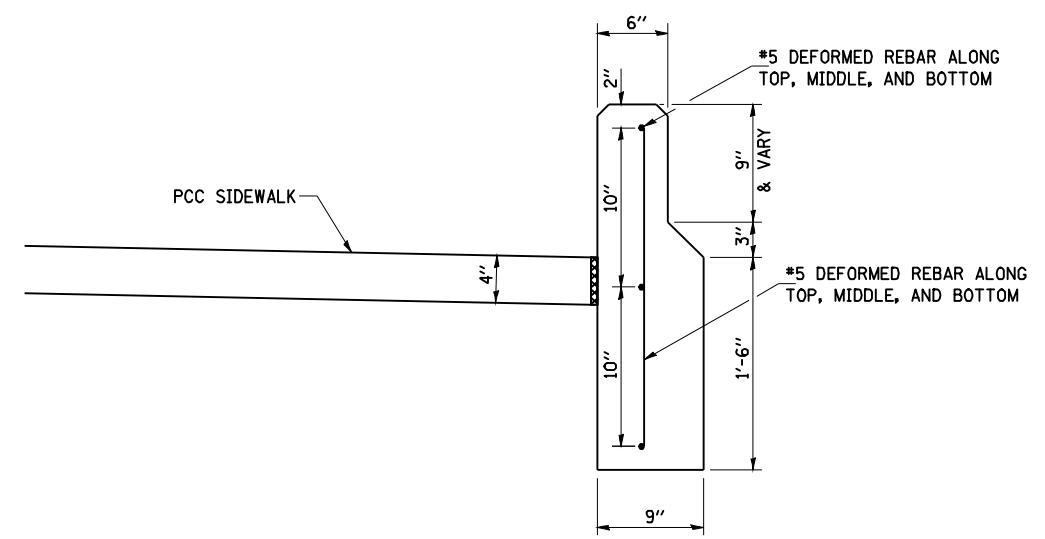


QUANTITIES FOR CONCRETE PIPES	
INSIDE DIAMETER OF PIPE	ESTIMATED CLASS SI CONCRETE REQUIRED 20" WIDTH CU. YD.
INCH	
4"	0.14
6"	0.16
8"	0.19
10"	0.22
12"	0.25
15"	0.30
18"	0.35
24"	0.45
30"	0.57
36"	0.69
42"	0.83
48"	0.97
54"	1.12
60"	1.28

**GENERAL NOTES**

1. CLASS SI CONCRETE SHALL BE USED THROUGHOUT.
2. WHEN CONCRETE COLLARS ARE USED TO CONNECT PIPES OF DIFFERENT OUTSIDE DIAMETERS, THE CONCRETE COLLAR SHALL BE FORMED USING THE LARGEST OUTSIDE DIAMETER (SEE END VIEW).
3. THE WIRE MESH SHALL WEIGH NOT LESS THAN 54#/100 SQ. FT.
4. CONCRETE COLLARS WILL BE PAID FOR AT THE CONTRACT UNIT PRICE, EACH, FOR CONCRETE COLLARS INCLUDING ALL MATERIAL AND LABOR SPECIFIED TO COMPLETE THE WORK IN PLACE.



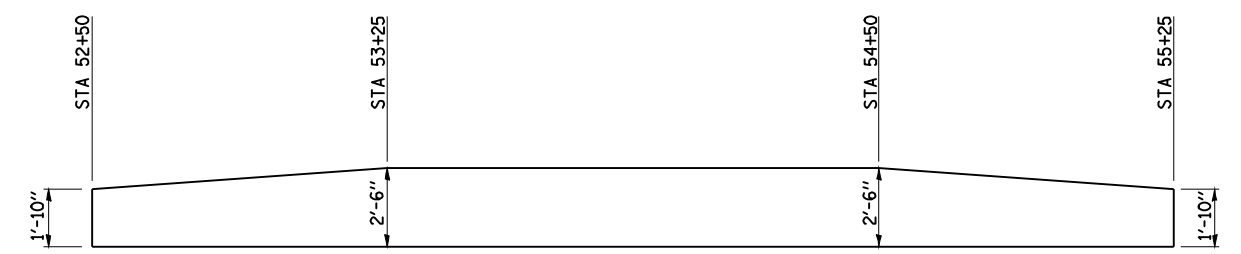
**CONCRETE RETAINING WALL SECTION**

LT STA 52+50 TO LT STA 55+25

CONCRETE STRUCTURES = 15.9 CU YD  
REINFORCEMENT BARS = 790 LBS

CONTRACTION JOINTS SHALL BE PLACED AT NOT LESS THAN 20 FOOT INTERVALS ALONG THE WALL LENGTH. LONGITUDINAL REINFORCEMENT SHALL BE CONTINUOUS THROUGH THE CONTRACTION JOINTS. JOINTS WHETHER PREFORMED OR SAWCUT SHALL BE NOT LESS THAN 2" DEEP AND BE PLACED FROM TOP TO BOTTOM. THE WALL SHALL BE FINISHED IN ACCORDANCE WITH ART. 503.15

HORIZONTAL REINFORCEMENT BARS SHALL BE LAPPED 2'-2"



**RETAINING WALL ELEVATION**