

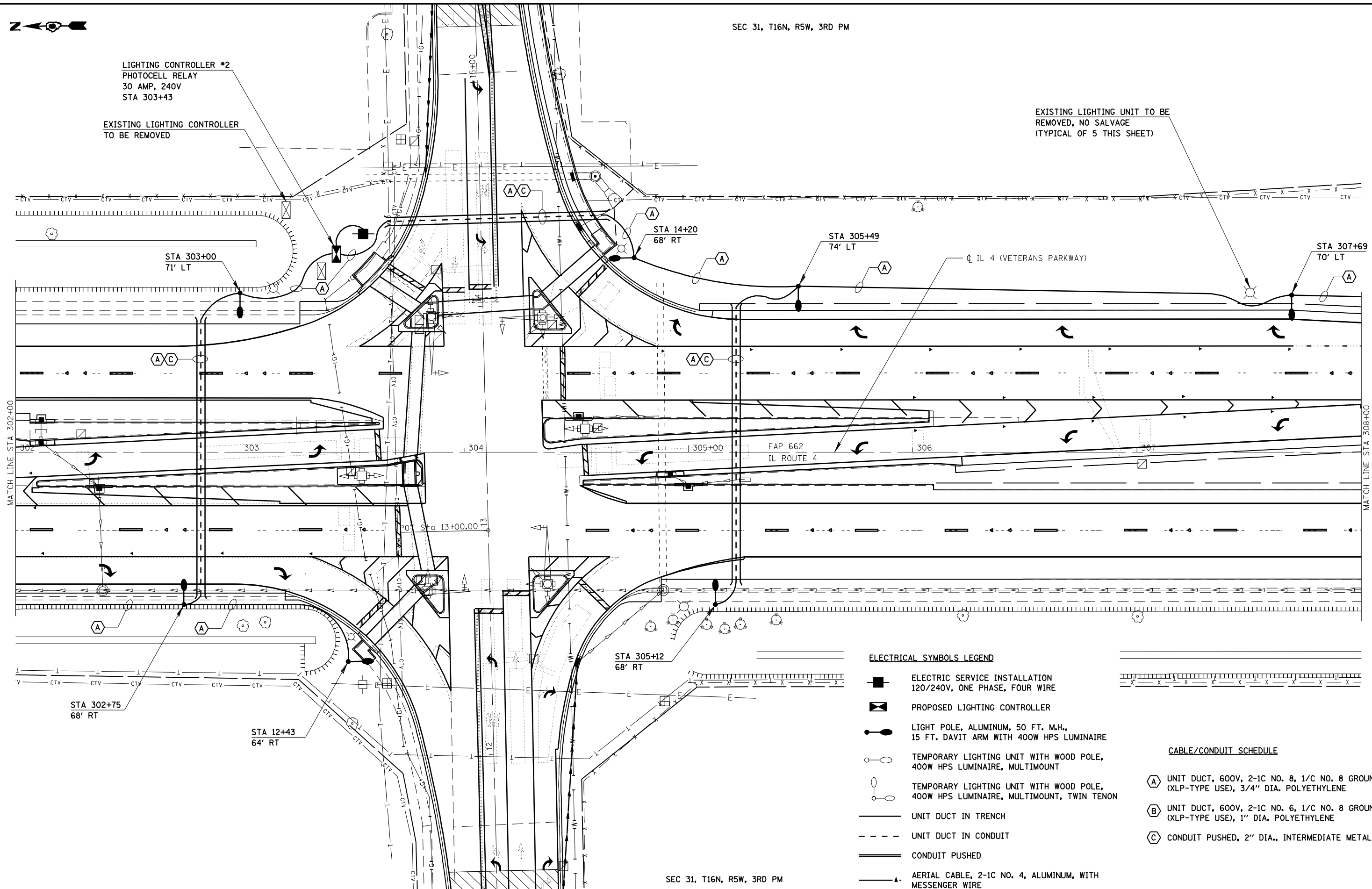


SEC 31, T16N, R5W, 3RD PM

LIGHTING CONTROLLER #2  
PHOTOCELL RELAY  
30 AMP, 240V  
STA 303+43

EXISTING LIGHTING CONTROLLER  
TO BE REMOVED

EXISTING LIGHTING UNIT TO BE  
REMOVED, NO SALVAGE  
(TYPICAL OF 5 THIS SHEET)



**ELECTRICAL SYMBOLS LEGEND**

- ELECTRIC SERVICE INSTALLATION  
120/240V, ONE PHASE, FOUR WIRE
- PROPOSED LIGHTING CONTROLLER
- LIGHT POLE, ALUMINUM, 50 FT. M.H.,  
15 FT. DAVIT ARM WITH 400W HPS LUMINAIRE
- TEMPORARY LIGHTING UNIT WITH WOOD POLE,  
400W HPS LUMINAIRE, MULTIMOUNT
- TEMPORARY LIGHTING UNIT WITH WOOD POLE,  
400W HPS LUMINAIRE, MULTIMOUNT, TWIN TENON
- UNIT DUCT IN TRENCH
- UNIT DUCT IN CONDUIT
- CONDUIT PUSHED
- AERIAL CABLE, 2-1C NO. 4, ALUMINUM, WITH  
MESSENGER WIRE

**CABLE/CONDUIT SCHEDULE**

- (A)** UNIT DUCT, 600V, 2-1C NO. 8, 1/C NO. 8 GROUND,  
(XLP-TYPE USE), 3/4" DIA. POLYETHYLENE
- (B)** UNIT DUCT, 600V, 2-1C NO. 6, 1/C NO. 8 GROUND,  
(XLP-TYPE USE), 1" DIA. POLYETHYLENE
- (C)** CONDUIT PUSHED, 2" DIA., INTERMEDIATE METAL

SEC 31, T16N, R5W, 3RD PM



JOB = 2200.4  
 FILE NAME = \*FILES\*  
 PLOT SCALE = \*SCALE\*  
 PLOT DATE = \*DATE\*

DESIGNED - NAK  
 DRAWN - AJH  
 CHECKED - NAK  
 DATE - 11/6/2009

REVISED -  
 REVISED -  
 REVISED -  
 REVISED -

**STATE OF ILLINOIS  
DEPARTMENT OF TRANSPORTATION**

**LIGHTING - IL 4 (VETERANS PARKWAY)**

SCALE: SHEET NO. OF SHEETS STA. TO STA.

F.A.S. RTE.	SECTION	COUNTY	TOTAL SHEETS	SHEET NO.
662	(2-1-2, 2-2) RS, TS-6	SANGAMON	244	170F
FED. ROAD DIST. NO. [ILLINOIS] FED. AID PROJECT			CONTRACT NO. 72B99	