

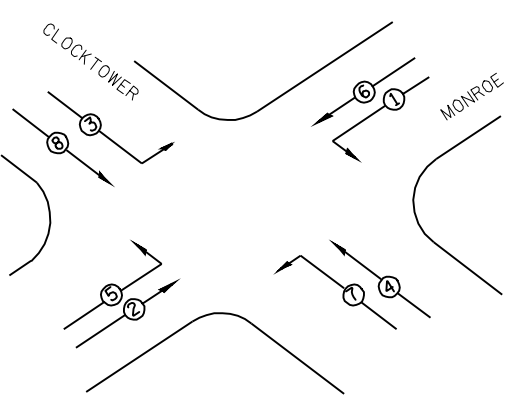
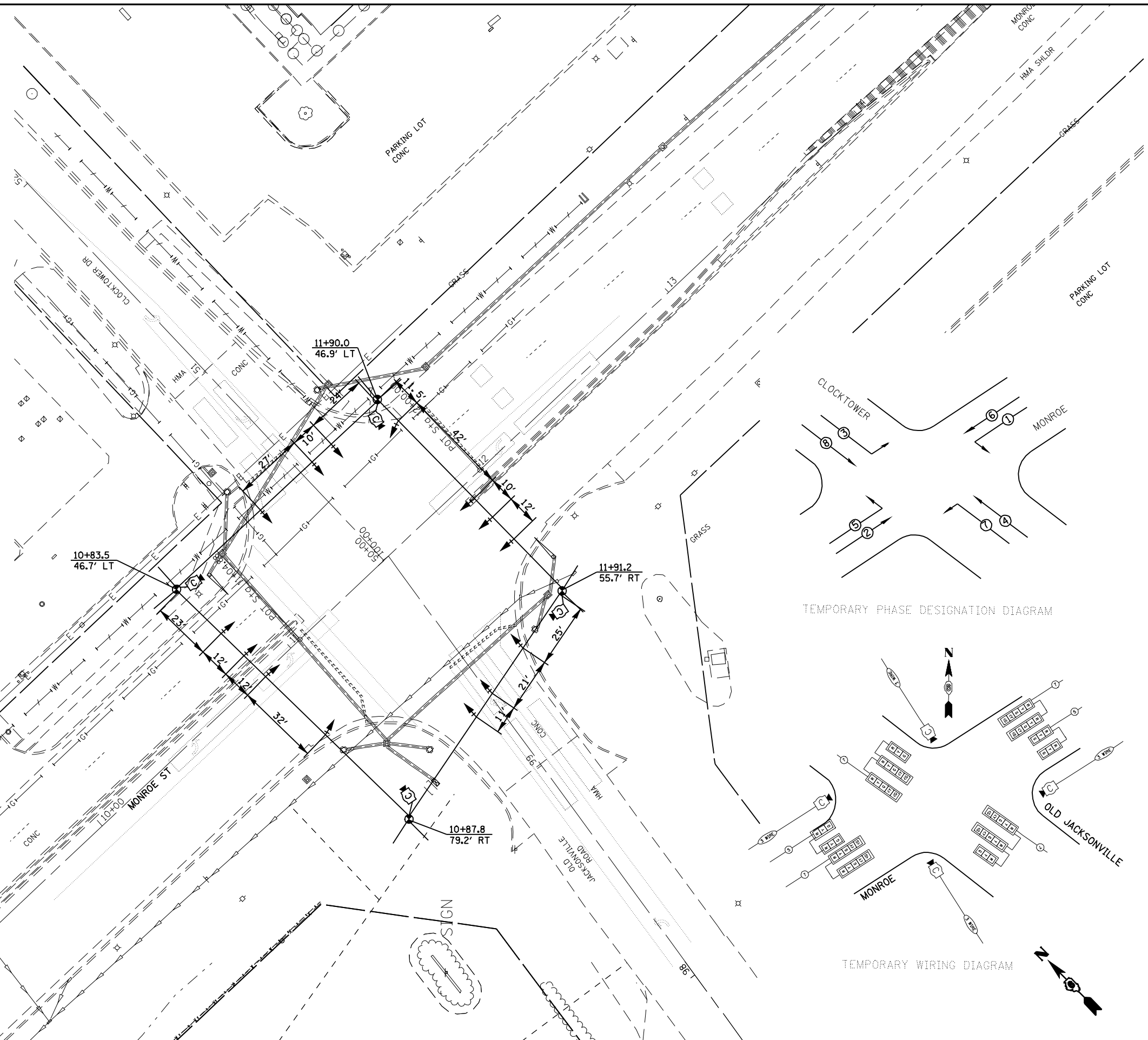
**TEMPORARY SIGNAL NOTES:**

1. TEMPORARY CABINET TO BE FURNISHED BY CONTRACTOR AND EQUIPPED WITH VIDEO DETECTION INTERFACE CABLES.
2. TEMPORARY SIGNALS SHALL BE OPERATIONAL PRIOR TO REMOVAL OF EXISTING SIGNALS.
3. POLES SHALL BE GUYED OR ANCHORED TO THE SATISFACTION OF THE ENGINEER. ANY ADJUSTMENTS SHALL BE CONSIDERED PART OF THE PAY ITEM FOR TEMPORARY TRAFFIC SIGNAL INSTALLATION.
4. VIDEO DETECTION SYSTEM SHALL BE UTILIZED TO PROVIDE DETECTION FOR THE TEMPORARY CONTROLLER, THE CAMERAS AND CONTROL UNIT SHALL BE RELOCATED TO THE PERMANENT TRAFFIC SIGNAL INSTALLATION. ALL ADJUSTMENTS AND RELOCATION OF VIDEO COMPONENTS ARE TO BE INCLUDED IN THE TEMPORARY TRAFFIC SIGNAL INSTALLATION COST.
5. POLES USED FOR TEMPORARY SIGNAL INSTALLATION SHALL PROVIDE FOR A MINIMUM 35 FT. MOUNTING HEIGHT FOR THE VIDEO CAMERAS.
6. EXISTING SERVICE TO BE UTILIZED FOR TEMPORARY AND PROPOSED SIGNALS

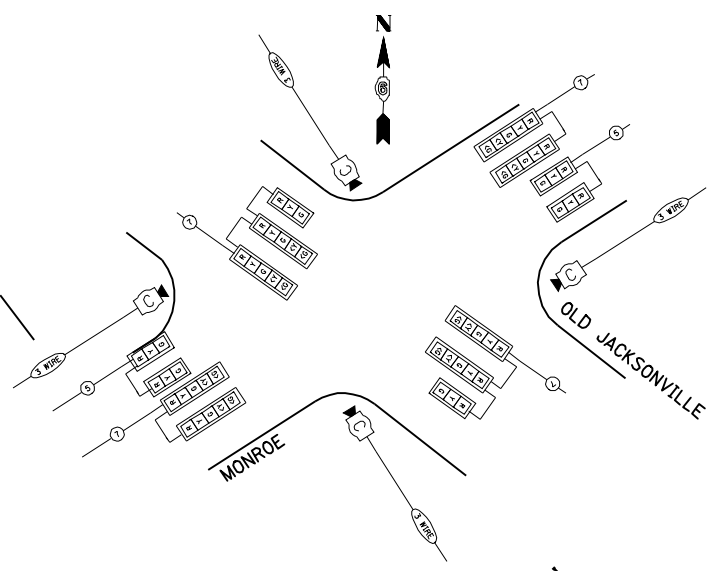
**EXISTING TRAFFIC SIGNAL EQUIPMENT TO BE REMOVED**

- 2 EACH MAST ARM AND POLE
- 1 EACH CONTROLLER AND CABINET
- 5 EACH SIGNAL POST
- 11 EACH SIGNAL HEAD ASSEMBLY

REMOVED EQUIPMENT SHALL BE RETURNED TO THE CITY OF SPRINGFIELD



TEMPORARY PHASE DESIGNATION DIAGRAM



TEMPORARY WIRING DIAGRAM

FILE NAME =	USER NAME = laughlinr1	DESIGNED -	REVISED -	<b>STATE OF ILLINOIS DEPARTMENT OF TRANSPORTATION</b>	SCALE:	SHEET NO. OF SHEETS	STA. TO STA.	F.A.P. RTE.	SECTION	COUNTY	TOTAL SHEETS	SHEET NO.
et:\pwwork\pwidot\LAUGHLINRL\0170829\0672899-TS.dgn	DRAWN -	REVISED -	662					(2-1-2,2-2)RS-TS-6	SANGAMON	244	183	
PLOT SCALE = 40.0000' / IN.	CHECKED -	REVISED -	CONTRACT NO. 72B99									
PLOT DATE = Oct-29-2009 11:58:05AM	DATE -	REVISED -	FED. ROAD DIST. NO. ILLINOIS FED. AID PROJECT									