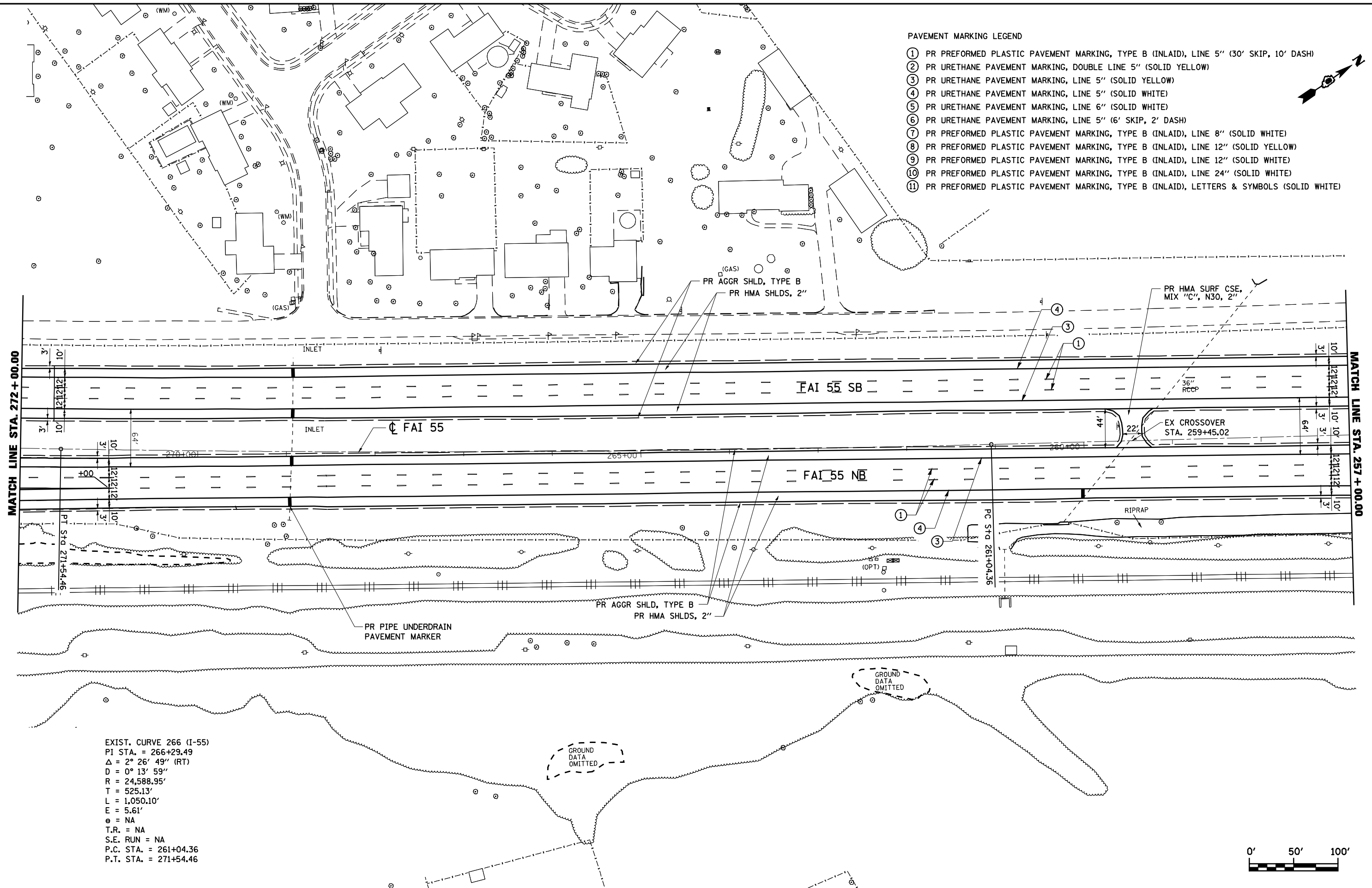
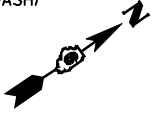
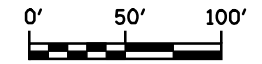


PAVEMENT MARKING LEGEND

- ① PR PREFORMED PLASTIC PAVEMENT MARKING, TYPE B (INLAID), LINE 5" (30' SKIP, 10' DASH)
- ② PR URETHANE PAVEMENT MARKING, DOUBLE LINE 5" (SOLID YELLOW)
- ③ PR URETHANE PAVEMENT MARKING, LINE 5" (SOLID YELLOW)
- ④ PR URETHANE PAVEMENT MARKING, LINE 5" (SOLID WHITE)
- ⑤ PR URETHANE PAVEMENT MARKING, LINE 6" (SOLID WHITE)
- ⑥ PR URETHANE PAVEMENT MARKING, LINE 5" (6' SKIP, 2' DASH)
- ⑦ PR PREFORMED PLASTIC PAVEMENT MARKING, TYPE B (INLAID), LINE 8" (SOLID WHITE)
- ⑧ PR PREFORMED PLASTIC PAVEMENT MARKING, TYPE B (INLAID), LINE 12" (SOLID YELLOW)
- ⑨ PR PREFORMED PLASTIC PAVEMENT MARKING, TYPE B (INLAID), LINE 12" (SOLID WHITE)
- ⑩ PR PREFORMED PLASTIC PAVEMENT MARKING, TYPE B (INLAID), LINE 24" (SOLID WHITE)
- ⑪ PR PREFORMED PLASTIC PAVEMENT MARKING, TYPE B (INLAID), LETTERS & SYMBOLS (SOLID WHITE)



EXIST. CURVE 266 (I-55)
 PI STA. = 266+29.49
 $\Delta = 2^\circ 26' 49''$ (RT)
 $D = 0^\circ 13' 59''$
 $R = 24,588.95'$
 $T = 525.13'$
 $L = 1,050.10'$
 $E = 5.61'$
 $e = NA$
 $T.R. = NA$
 $S.E. RUN = NA$
 $P.C. STA. = 261+04.36$
 $P.T. STA. = 271+54.46$



FILE NAME =	USER NAME = laughlinr1	DESIGNED - R.A.W.	REVISED -	STATE OF ILLINOIS DEPARTMENT OF TRANSPORTATION	PLAN SHEET STA. 272+00 TO 257+00			F.A.I. RTE. = I-55	SECTION = 84-1-2RS4150RS1	COUNTY = SANGAMON	TOTAL SHEETS = 65	SHEET NO. = 17
et:\pwork\pwork\LAUGHLINRL\08169970\0872C38-RPT-Plan I-55.dgn		DRAWN - R.A.W.	REVISED -		SCALE: 1"=50'	SHEET NO.	OF SHEETS	STA.	TO STA.	CONTRACT NO. 72C38		
		CHECKED - J.S.A.	REVISED -							ILLINOIS FED. AID PROJECT		
		DATE - 7/24/09	REVISED -									