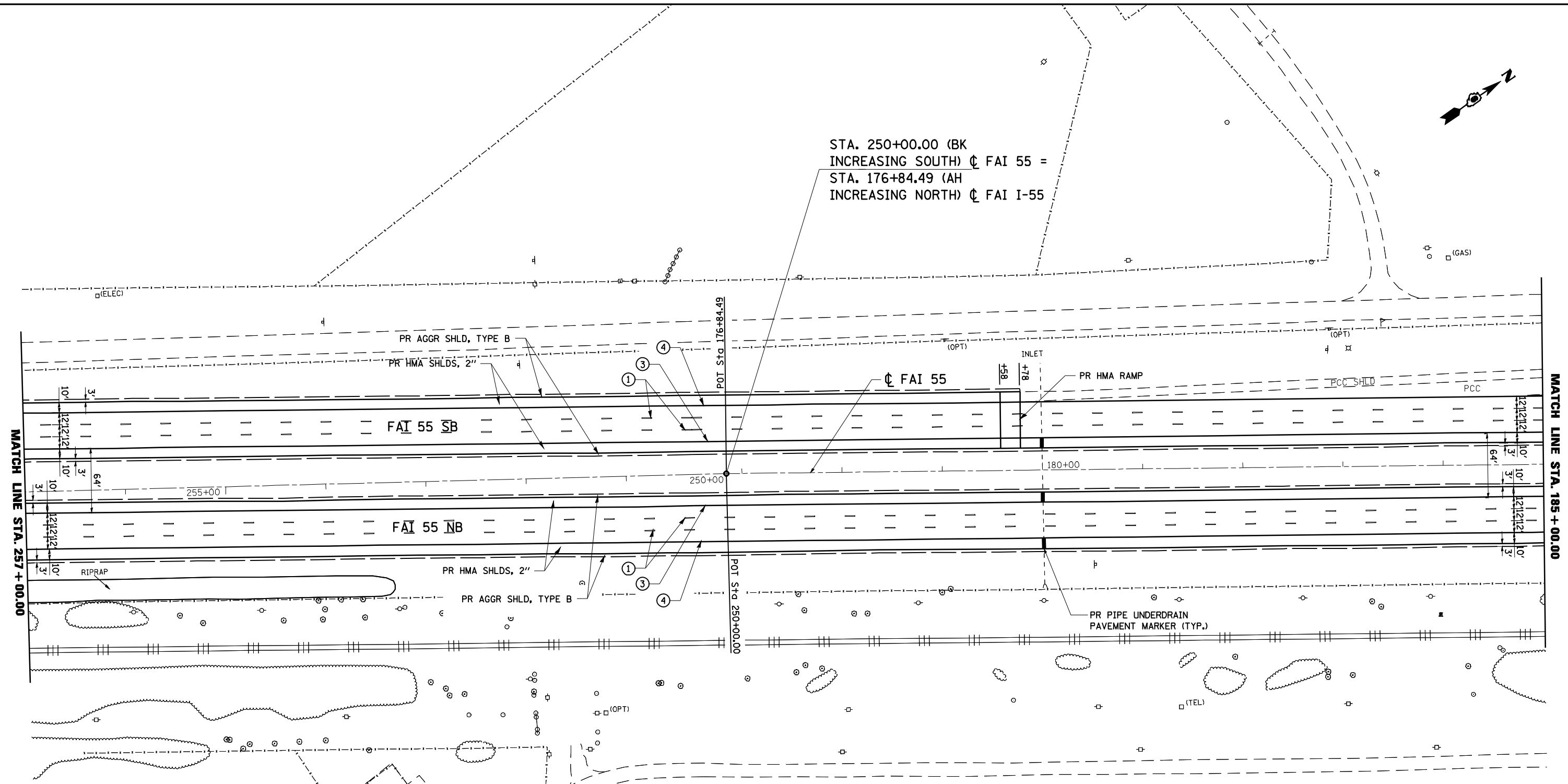


STA. 250+00.00 (BK
INCREASING SOUTH) ϕ FAI 55 =
STA. 176+84.49 (AH
INCREASING NORTH) ϕ FAI I-55



MATCH LINE STA. 257 + 00.00

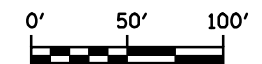
MATCH LINE STA. 185 + 00.00

PAVEMENT MARKING LEGEND

- ① PR PREFORMED PLASTIC PAVEMENT MARKING, TYPE B (INLAID), LINE 5" (30' SKIP, 10' DASH)
- ② PR URETHANE PAVEMENT MARKING, DOUBLE LINE 5" (SOLID YELLOW)
- ③ PR URETHANE PAVEMENT MARKING, LINE 5" (SOLID YELLOW)
- ④ PR URETHANE PAVEMENT MARKING, LINE 5" (SOLID WHITE)
- ⑤ PR URETHANE PAVEMENT MARKING, LINE 6" (SOLID WHITE)
- ⑥ PR URETHANE PAVEMENT MARKING, LINE 5" (6' SKIP, 2' DASH)
- ⑦ PR PREFORMED PLASTIC PAVEMENT MARKING, TYPE B (INLAID), LINE 8" (SOLID WHITE)
- ⑧ PR PREFORMED PLASTIC PAVEMENT MARKING, TYPE B (INLAID), LINE 12" (SOLID YELLOW)
- ⑨ PR PREFORMED PLASTIC PAVEMENT MARKING, TYPE B (INLAID), LINE 12" (SOLID WHITE)
- ⑩ PR PREFORMED PLASTIC PAVEMENT MARKING, TYPE B (INLAID), LINE 24" (SOLID WHITE)
- ⑪ PR PREFORMED PLASTIC PAVEMENT MARKING, TYPE B (INLAID), LETTERS & SYMBOLS (SOLID WHITE)

NOTE: REDUCE OVERLAY THICKNESS TO 3 1/4" (1 3/4" BINDER, 1 1/2" SURFACE, AND 1 1/2" ON SHOULDER) BETWEEN THE FOLLOWING STATIONS TO MATCH EXISTING WEIGH STATION EXIT AND ENTRANCE RAMPS:

STA. 179+78.00 TO 190+03.00 SB
STA. 222+01.00 TO 227+15.00 SB



FILE NAME =	USER NAME = laughlinr1	DESIGNED - R.A.W.	REVISED -
et:\pwork\pwork\LAUGHLINRL\0169970\0672C38-RPT-Plan I-55.dgn		DRAWN - R.A.W.	REVISED -
	PLOT SCALE = 100.0000' / IN.	CHECKED - J.S.A.	REVISED -
	PLOT DATE = Oct-28-2009 08:46:05AM	DATE - 7/24/09	REVISED -

**STATE OF ILLINOIS
DEPARTMENT OF TRANSPORTATION**

PLAN SHEET
STA. 257+00 TO 250+00, 176+84.49 TO 185+00

SCALE: 1"=50' SHEET NO. OF SHEETS STA. TO STA.

F.A.I. RTE.	SECTION	COUNTY	TOTAL SHEETS	SHEET NO.
I-55	84-1-2RS4150RS1	SANGAMON	65	18
CONTRACT NO. 72C38				
ILLINOIS FED. AID PROJECT				