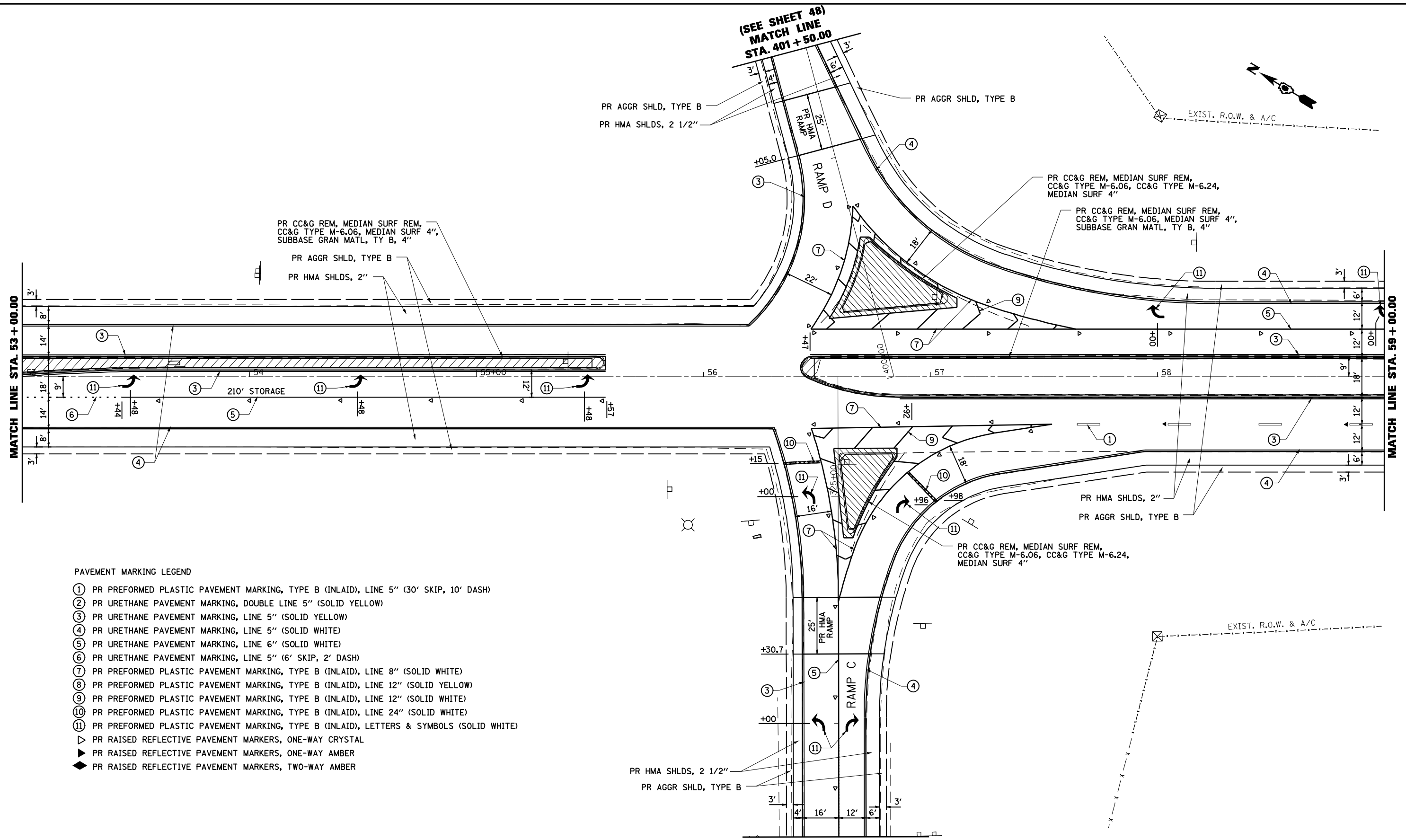
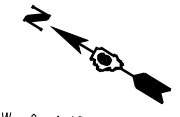
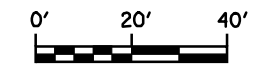


(SEE SHEET 48)  
MATCH LINE  
STA. 401 + 50.00



- PAVEMENT MARKING LEGEND**
- ① PR PREFORMED PLASTIC PAVEMENT MARKING, TYPE B (INLAID), LINE 5" (30' SKIP, 10' DASH)
  - ② PR URETHANE PAVEMENT MARKING, DOUBLE LINE 5" (SOLID YELLOW)
  - ③ PR URETHANE PAVEMENT MARKING, LINE 5" (SOLID YELLOW)
  - ④ PR URETHANE PAVEMENT MARKING, LINE 5" (SOLID WHITE)
  - ⑤ PR URETHANE PAVEMENT MARKING, LINE 6" (SOLID WHITE)
  - ⑥ PR URETHANE PAVEMENT MARKING, LINE 5" (6' SKIP, 2' DASH)
  - ⑦ PR PREFORMED PLASTIC PAVEMENT MARKING, TYPE B (INLAID), LINE 8" (SOLID WHITE)
  - ⑧ PR PREFORMED PLASTIC PAVEMENT MARKING, TYPE B (INLAID), LINE 12" (SOLID YELLOW)
  - ⑨ PR PREFORMED PLASTIC PAVEMENT MARKING, TYPE B (INLAID), LINE 12" (SOLID WHITE)
  - ⑩ PR PREFORMED PLASTIC PAVEMENT MARKING, TYPE B (INLAID), LINE 24" (SOLID WHITE)
  - ⑪ PR PREFORMED PLASTIC PAVEMENT MARKING, TYPE B (INLAID), LETTERS & SYMBOLS (SOLID WHITE)
  - ▷ PR RAISED REFLECTIVE PAVEMENT MARKERS, ONE-WAY CRYSTAL
  - ▶ PR RAISED REFLECTIVE PAVEMENT MARKERS, ONE-WAY AMBER
  - ◆ PR RAISED REFLECTIVE PAVEMENT MARKERS, TWO-WAY AMBER



FILE NAME =	USER NAME = #USER*	DESIGNED - R.A.W.	REVISED -	<b>STATE OF ILLINOIS DEPARTMENT OF TRANSPORTATION</b>	<b>PLAN SHEET - ROUTE 123 STA. 53+00 TO 59+00</b>			F.A.I. RTE.	SECTION	COUNTY	TOTAL SHEETS	SHEET NO.
#FILE#		DRAWN - R.A.W.	REVISED -		I-55	84-1-2RS4150RS1	SANGAMON	65	42			
PLOT SCALE = #SCALE#		CHECKED - J.S.A.	REVISED -		SCALE: 1"=20'			CONTRACT NO. 72C38				
PLOT DATE = #DATE#		DATE - 7/24/09	REVISED -		SHEET NO. OF SHEETS STA. TO STA.		ILLINOIS FED. AID PROJECT					