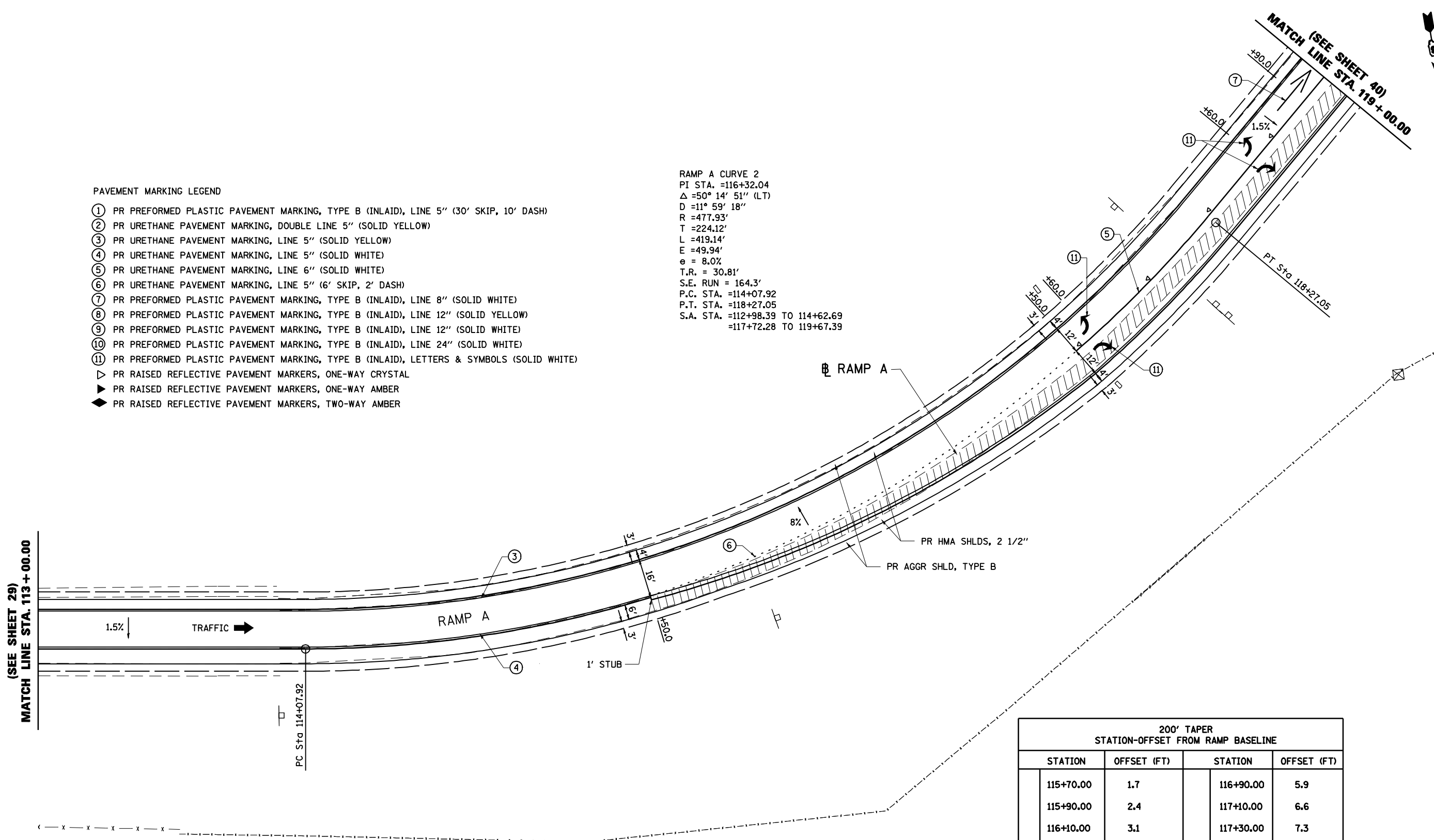


PAVEMENT MARKING LEGEND

- ① PR PREFORMED PLASTIC PAVEMENT MARKING, TYPE B (INLAID), LINE 5" (30' SKIP, 10' DASH)
- ② PR URETHANE PAVEMENT MARKING, DOUBLE LINE 5" (SOLID YELLOW)
- ③ PR URETHANE PAVEMENT MARKING, LINE 5" (SOLID YELLOW)
- ④ PR URETHANE PAVEMENT MARKING, LINE 5" (SOLID WHITE)
- ⑤ PR URETHANE PAVEMENT MARKING, LINE 6" (SOLID WHITE)
- ⑥ PR URETHANE PAVEMENT MARKING, LINE 5" (6' SKIP, 2' DASH)
- ⑦ PR PREFORMED PLASTIC PAVEMENT MARKING, TYPE B (INLAID), LINE 8" (SOLID WHITE)
- ⑧ PR PREFORMED PLASTIC PAVEMENT MARKING, TYPE B (INLAID), LINE 12" (SOLID YELLOW)
- ⑨ PR PREFORMED PLASTIC PAVEMENT MARKING, TYPE B (INLAID), LINE 12" (SOLID WHITE)
- ⑩ PR PREFORMED PLASTIC PAVEMENT MARKING, TYPE B (INLAID), LINE 24" (SOLID WHITE)
- ⑪ PR PREFORMED PLASTIC PAVEMENT MARKING, TYPE B (INLAID), LETTERS & SYMBOLS (SOLID WHITE)
- ▷ PR RAISED REFLECTIVE PAVEMENT MARKERS, ONE-WAY CRYSTAL
- ▶ PR RAISED REFLECTIVE PAVEMENT MARKERS, ONE-WAY AMBER
- ◆ PR RAISED REFLECTIVE PAVEMENT MARKERS, TWO-WAY AMBER

RAMP A CURVE 2
 PI STA. =116+32.04
 Δ =50° 14' 51" (LT)
 D =11° 59' 18"
 R =477.93'
 T =224.12'
 L =419.14'
 E =49.94'
 e = 8.0%
 T.R. = 30.81'
 S.E. RUN = 164.3'
 P.C. STA. =114+07.92
 P.T. STA. =118+27.05
 S.A. STA. =112+98.39 TO 114+62.69
 =117+72.28 TO 119+67.39



200' TAPER STATION-OFFSET FROM RAMP BASELINE			
STATION	OFFSET (FT)	STATION	OFFSET (FT)
115+70.00	1.7	116+90.00	5.9
115+90.00	2.4	117+10.00	6.6
116+10.00	3.1	117+30.00	7.3
116+30.00	3.8	117+50.00	8.0
116+50.00	4.5		
116+70.00	5.2		

