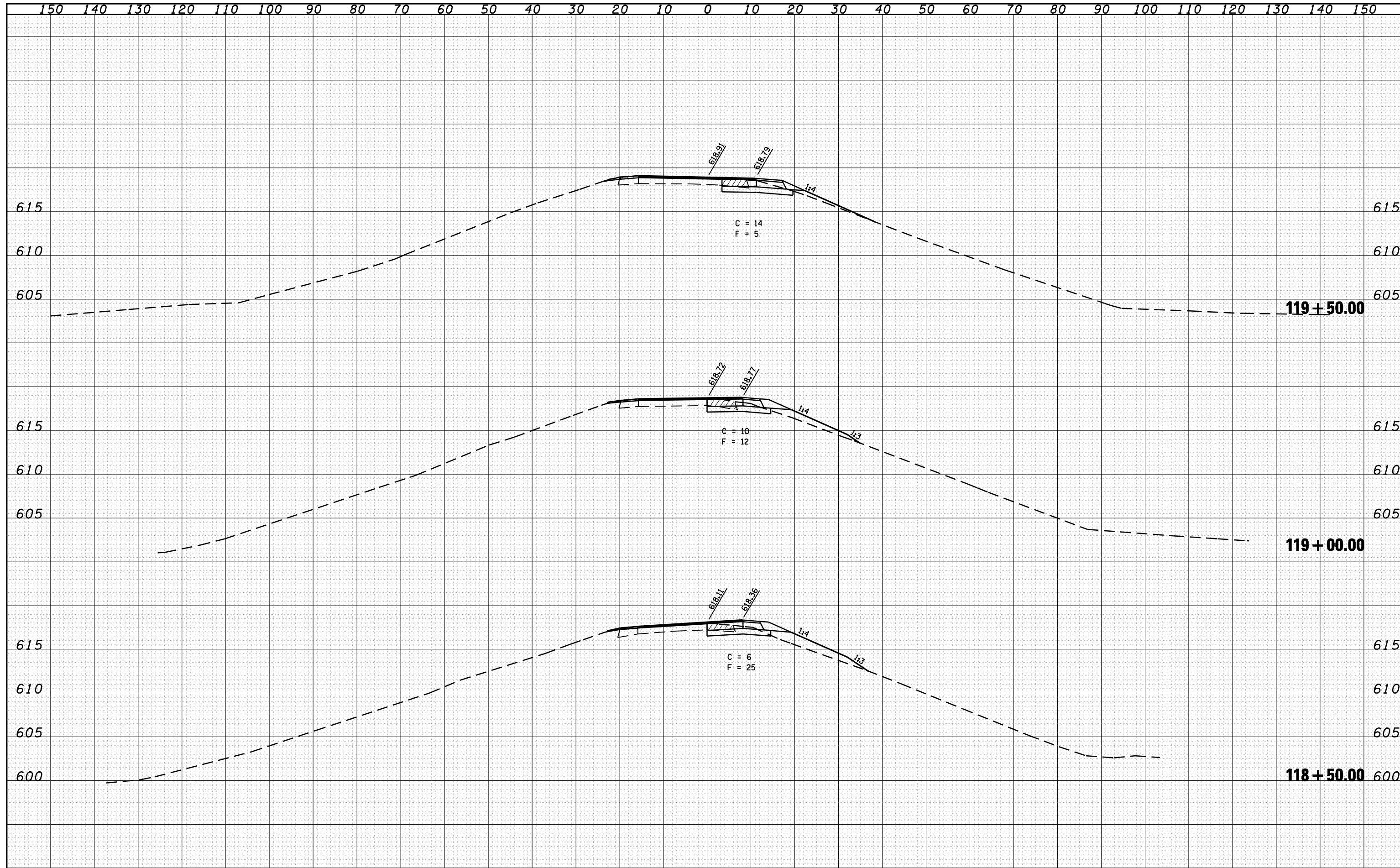


DATE	
BY	
FINAL SURVEY	SURVEYED
NOTE BOOK	PLOTTED
NO.	TEMPLATE
	AREAS
	CHECKED

DATE	
BY	
ORIGINAL SURVEY	SURVEYED
NOTE BOOK	PLOTTED
NO.	TEMPLATE
	AREAS
	CHECKED



FILE NAME =	USER NAME = laughlinr1	DESIGNED - R.A.W.	REVISED -	STATE OF ILLINOIS DEPARTMENT OF TRANSPORTATION	CROSS SECTION RAMP A STA. 118+50.00 TO 119+50.00			F.A.I. RTE. I-55	SECTION 84-1-2RS415ORS1	COUNTY SANGAMON	TOTAL SHEETS 65	SHEET NO. 62
o:\pwwork\PWIDOT\LAUGHLINR1\0169970\0672e38		DRAWN - J.D.	REVISED -		SCALE:	SHEET NO.	OF SHEETS	STA. 118+50.00	TO STA. 119+50.00	CONTRACT NO. 72C38		
PLOT SCALE = 20.0000' / IN.		CHECKED - J.S.A.	REVISED -		ILLINOIS FED. AID PROJECT							
PLOT DATE = Oct-28-2009 08:49:14AM		DATE - 8/17/09	REVISED -									