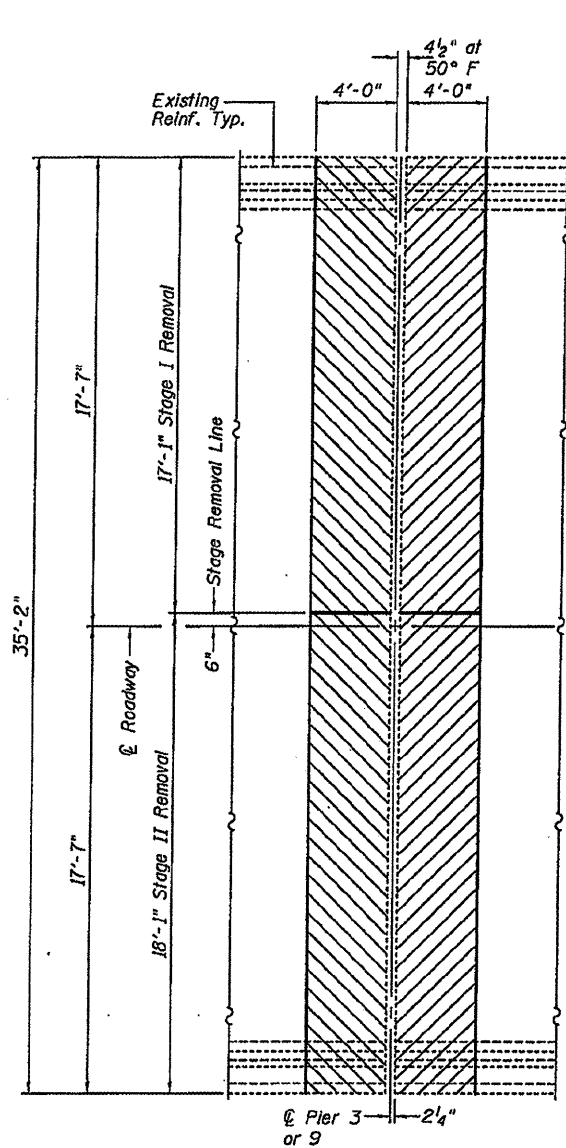
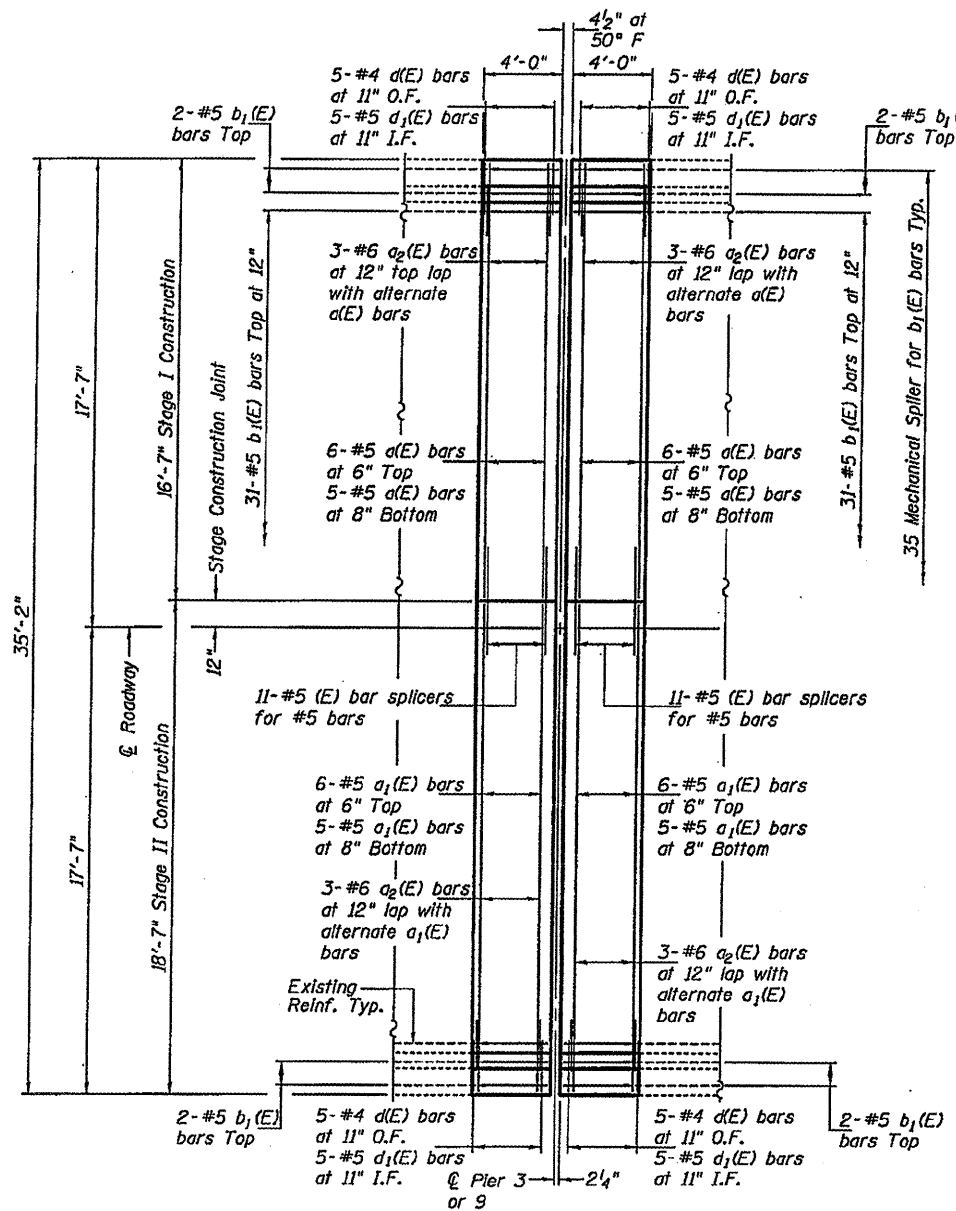


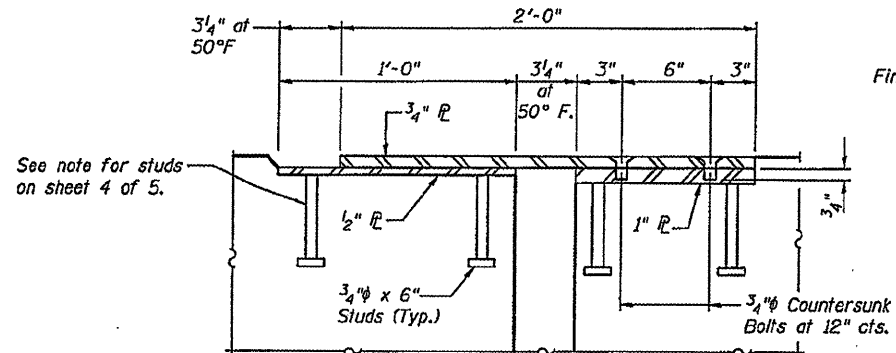
STATE OF ILLINOIS  
DEPARTMENT OF TRANSPORTATION



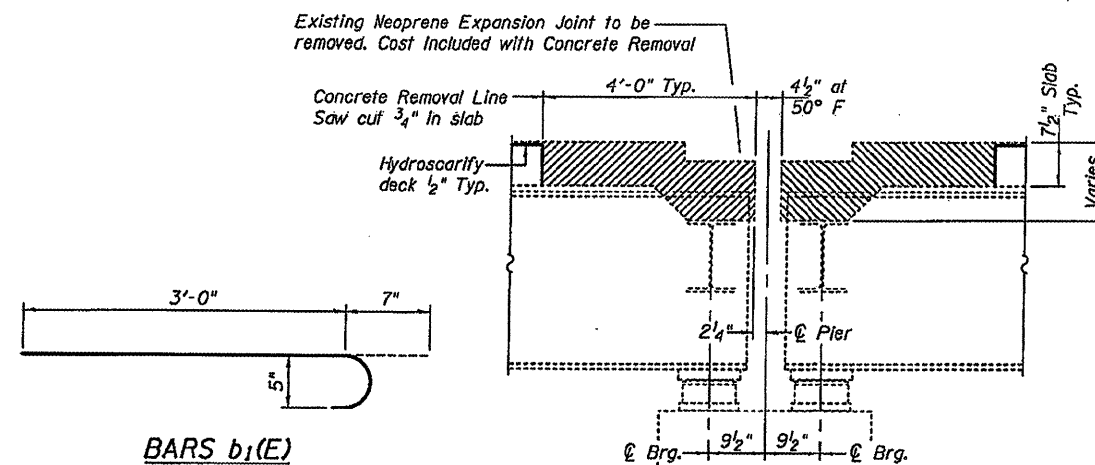
PARTIAL REMOVAL PLAN



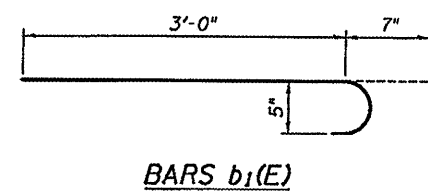
PARTIAL PLAN



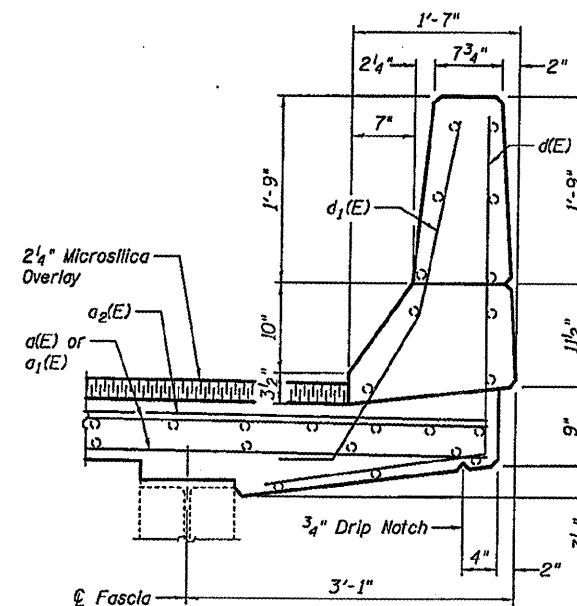
SECTION C-C



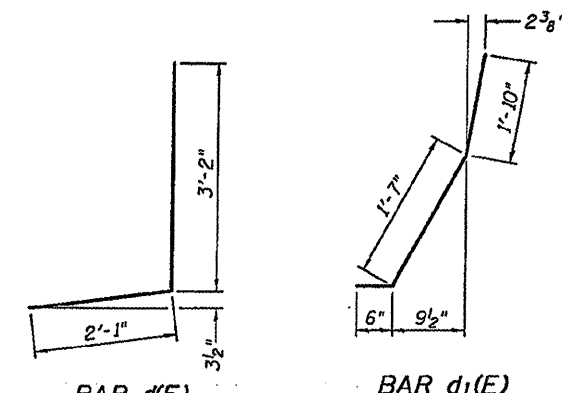
TYPICAL REMOVAL SECTION



BARS  $b_1(E)$



TYPICAL SECTION THRU PARAPET

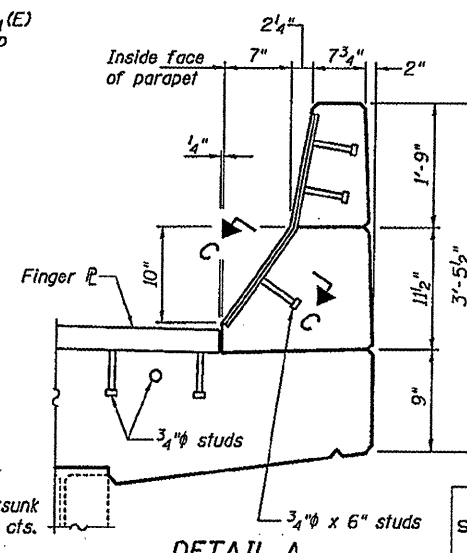


BAR  $d(E)$

BAR  $d_1(E)$

BILL OF MATERIAL

Bar	No.	Size	Length	Shape
$a(E)$	44	#5	16'-4"	—
$a_1(E)$	44	#5	18'-4"	—
$a_2(E)$	24	#6	6'-0"	—
$b_1(E)$	140	#5	3'-7"	—
$d(E)$	40	#4	5'-3"	L
$d_1(E)$	40	#5	3'-11"	L
Concrete Removal			Cu. Yd.	18.7
Concrete Superstructure			Cu. Yd.	19.8
Reinforcement Bars, Epoxy Coated			Pound	2,630
Bar Splicers			Each	44
Mechanical Splice			Each	140



DETAIL A

DECK AND JOINT DETAILS  
SN 065-0003

DESIGNED	A.J.B.
CHECKED	V.H.V.
DRAWN	Drew Christopher
CHECKED	A.J.B. V.H.V.

EXAMINED	February 27, 2009
PASSED	<i>Ralph E. Anderson</i> ENGINEER OF STRUCTURAL SERVICES ENGINEER OF BRIDGES AND STRUCTURES

SHEET NO. 2 5 SHEETS	F.A.P. RTE. 34	SECTION (2) Bridge Rehab	COUNTY Menard	TOTAL SHEETS 29	SHEET NO. 24
	FED. ROAD DIST. NO.	ILLINOIS	FED. AID PROJECT	CONTRACT NO. 72C71	