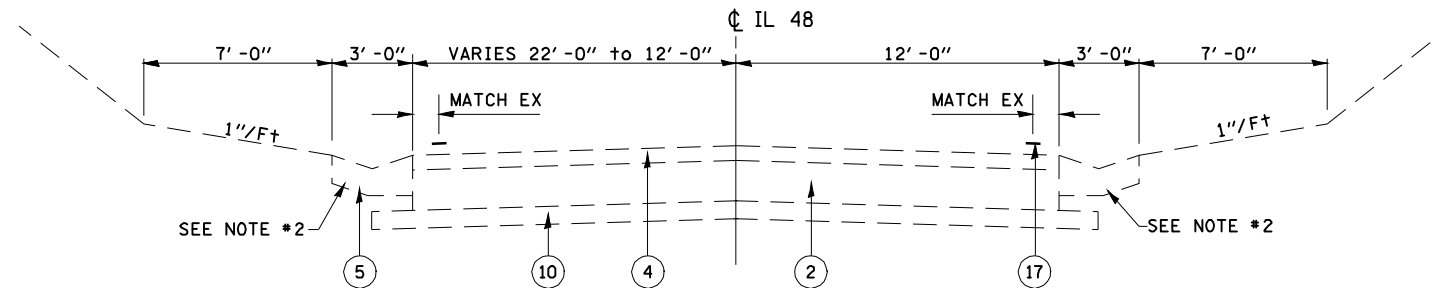


TYPICAL SECTION #1
FA 714

STA. EQ.: STA. 997+36.49 BK. = STA. 0+00.00 AH.
 STA. 0+00 TO STA. 37+67.98
 STA. 52+84.90 TO STA. 68+12.31
 STA. EQ.: STA. 68+12.31 BK. = STA. 23+53.94 AH.
 STA. 23+53.94 TO STA. 73+86.00

STA. 87+51.00 TO STA. 112+99.14
 STA. EQ.: STA. 112+99.14 BK. = STA. 112+97.33 AH.
 STA. 112+97.33 TO STA. 185+62.50
 STA. 196+70.00 TO STA. 208+38.98
 STA. 217+67.24 TO STA. 227+31.10

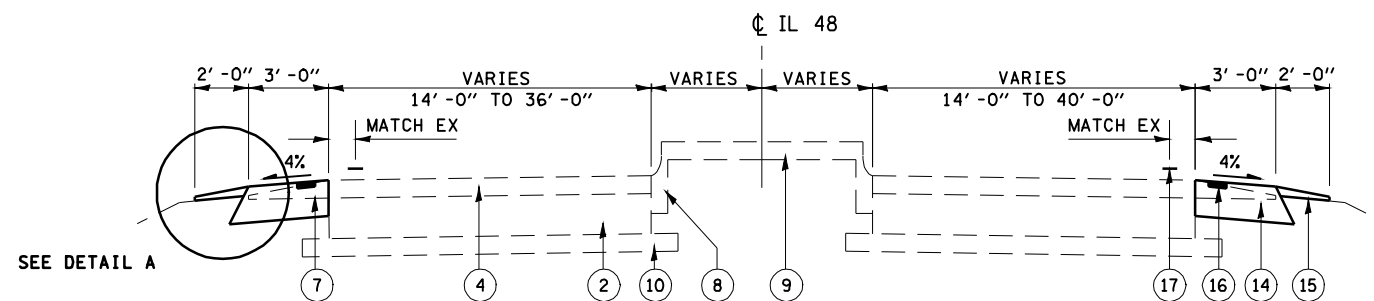


TYPICAL SECTION #2
FA 714

STA. 50+59.00 TO STA. 52+84.90

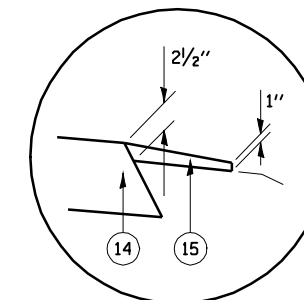
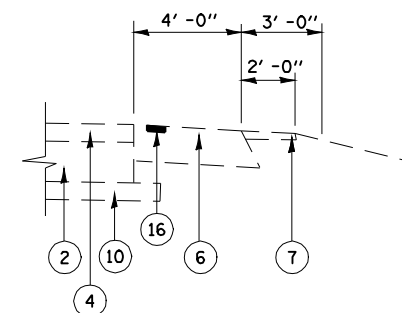
NOTES:

1. STA. 35+50 TO STA. 37+67.80 VARIES FROM 24'-0" TO 30'-6"
 STA. 69+07.58 TO STA. 73+86.00 VARIES FROM 24'-0" TO 31'-6"
 STA. 87+51.00 TO STA. 91+30.00 VARIES FROM 31'-6" TO 24'-0"
2. EXISTING GUTTER TYPE A ENDS:
 RT. STA. 54+52.5
 LT. STA. 56+63.80



TYPICAL SECTION #3
FA 714

* STA. 73+86.00 TO STA. 87+51.00



DETAIL A
ALL LOCATIONS

* LIMITS OF EXISTING HMA SHOULDERS:
 RT. STA. 75+81.00 TO STA. 82+42.55
 LT. STA. 79+14.00 TO STA. 85+82.00

- LEGEND**
- ① EXISTING 9" P. C. C. PAVEMENT
 - ② EXISTING P. C. C. BASE COURSE 9"
 - ③ EXISTING P. C. C. WIDENING
 - ④ EXISTING HOT-MIX ASPHALT OVERLAY
 - ⑤ EXISTING GUTTER, TYPE A
 - ⑥ EXISTING HOT-MIX ASPHALT SHOULDER
 - ⑦ EXISTING AGGREGATE SHOULDER, TYPE B
 - ⑧ EXISTING CURB AND GUTTER
 - ⑨ EXISTING CONCRETE MEDIAN SURFACE, 4"
 - ⑩ EXISTING SUB-BASE GRANULAR MATERIAL
 - ⑭ PROPOSED HOT-MIX ASPHALT SHOULDER 8"
 - ⑮ PROPOSED AGGREGATE SHOULDERS, TYPE B (WEDGE)
 - ⑯ PROPOSED SHOULDER RUMBLE STRIP
 - ⑰ PROPOSED THERMO PAVEMENT MARKING, 5"

FILE NAME =	USER NAME = laughlinr1	DESIGNED -	REVISED -
et:\pwork\PWIDOT\LAUGHLINRL\0128096\0672C78-sh-t-typical.dgn		DRAWN -	REVISED -
		CHECKED -	REVISED -
		DATE -	REVISED -

STATE OF ILLINOIS
DEPARTMENT OF TRANSPORTATION

TYPICAL CROSS SECTIONS

SCALE: NA SHEET NO. OF SHEETS STA. TO STA.

* D6 SHLDR RUMBLE STRIPS 2010				
F.A.P. RTE.	SECTION	COUNTY	TOTAL SHEETS	SHEET NO.
714	*	CHRISTIAN	18	4
CONTRACT NO. 72C78				
ILLINOIS FED. AID PROJECT				