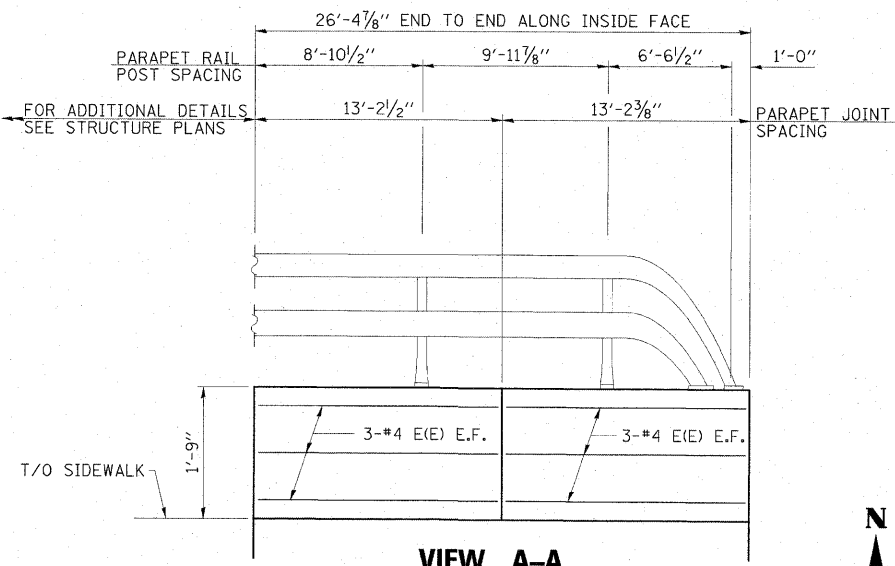
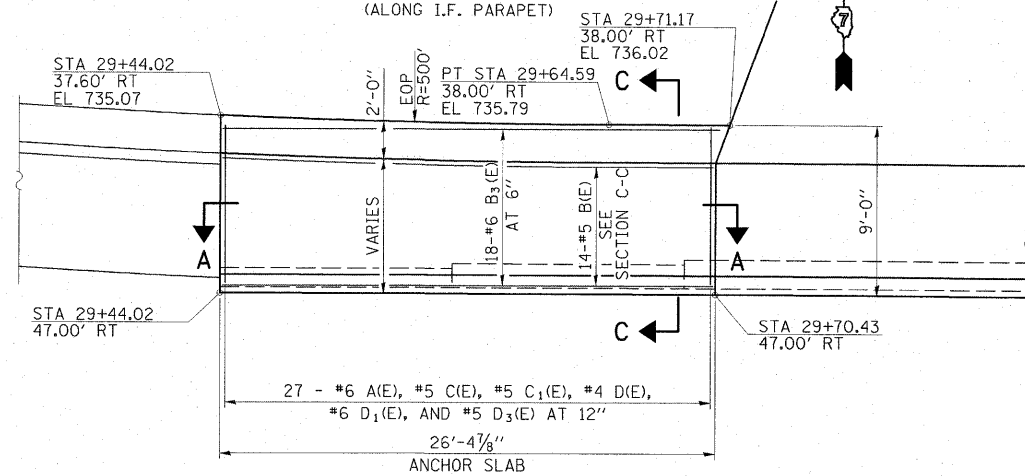


**NOTES**

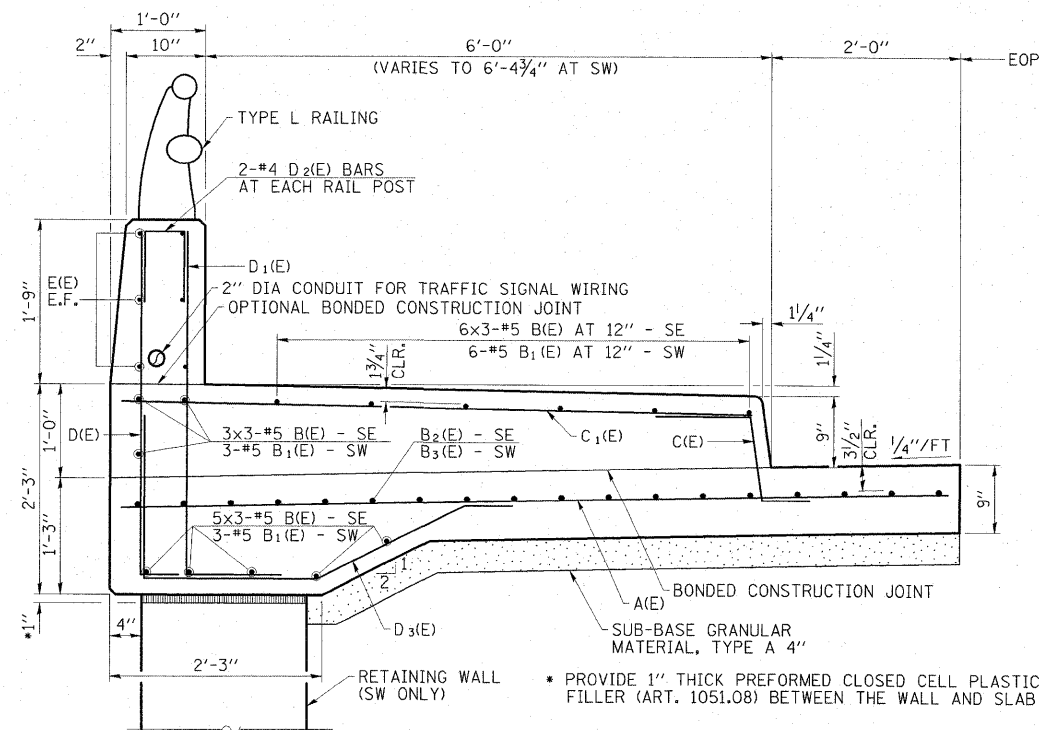
1. REINFORCEMENT BARS DESIGNATED (E) SHALL BE EPOXY COATED.
2. BARS INDICATED THUS: 18x3-#6 ETC. INDICATES 18 LINES OF BARS WITH 3 LENGTHS PER LINE.
3. SEE SUPERSTRUCTURE DETAILS (SHEET 10 OF 35 OF STRUCTURE PLANS) FOR PARAPET JOINT DETAILS.
4. SEE ALUMINUM RAILING, TYPE L (SHEET 16 OF 35 OF STRUCTURE PLANS) FOR RAIL DETAILS.



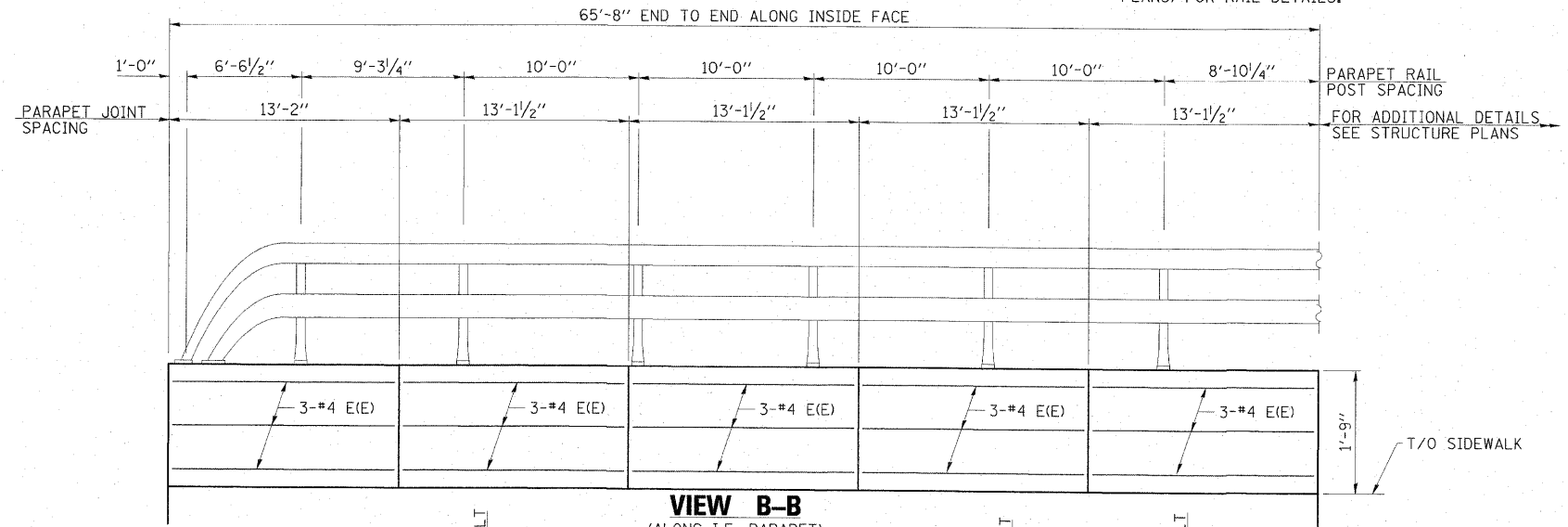
**VIEW A-A**  
(ALONG I.F. PARAPET)



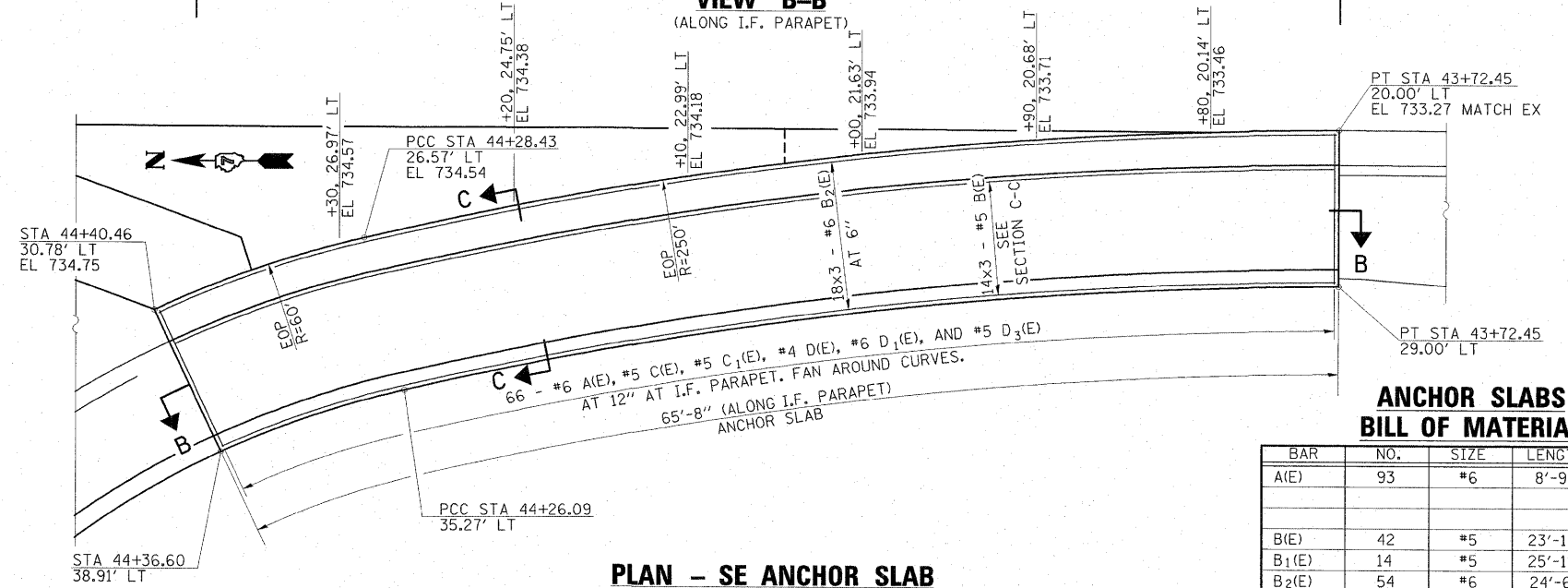
**PLAN - SW ANCHOR SLAB**



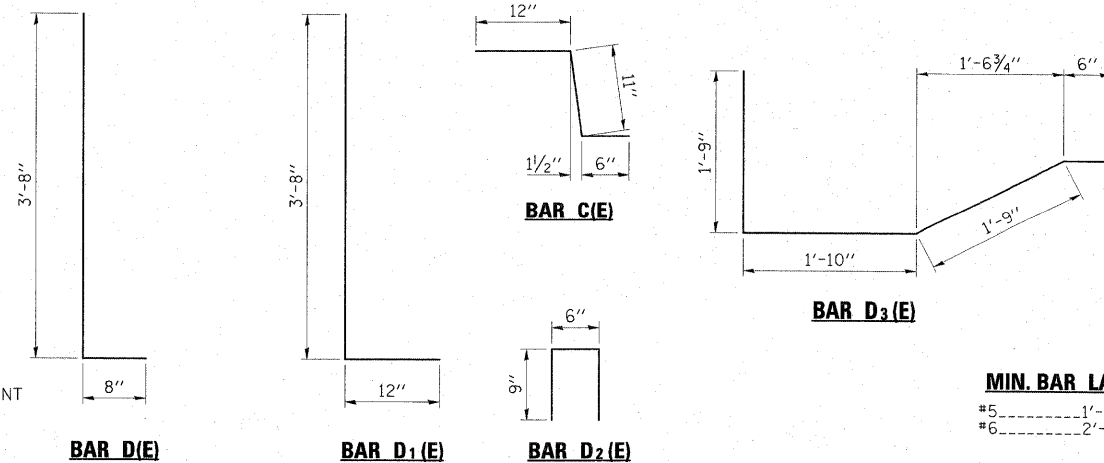
**SECTION C-C**



**VIEW B-B**  
(ALONG I.F. PARAPET)



**PLAN - SE ANCHOR SLAB**



**MIN. BAR LAP**

- #5-----1'-10"
- #6-----2'-2"

**ANCHOR SLABS  
BILL OF MATERIAL**

BAR	NO.	SIZE	LENGTH	SHAPE	
A(E)	93	#6	8'-9"	—	
B(E)	42	#5	23'-11"	—	
B <sub>1</sub> (E)	14	#5	25'-11"	—	
B <sub>2</sub> (E)	54	#6	24'-6"	—	
B <sub>3</sub> (E)	18	#6	25'-11"	—	
C(E)	93	#5	2'-5"	~	
C <sub>1</sub> (E)	93	#5	6'-8"	—	
D(E)	93	#4	4'-4"	L	
D <sub>1</sub> (E)	93	#6	4'-8"	L	
D <sub>2</sub> (E)	20	#4	2'-0"	n	
D <sub>3</sub> (E)	93	#5	5'-10"	~	
E(E)	42	#4	12'-10"	—	
REINFORCEMENT BARS, EPOXY COATED				POUND	8100
CONCRETE STRUCTURES				CU YD	55.6
PROTECTIVE COAT				SQ YD	121
ALUMINUM RAILING, TYPE L				FOOT	90

FILE NAME = D774149-SHT_Details21.dgn	USER NAME = HAS	DESIGNED - MTD	REVISED -
PLOT SCALE = 0.0833' / IN.	CHECKED - MTD	DRAWN - HAS	REVISED -
PLOT DATE = 8/4/2009 6:18:23 AM	DATE - AUGUST 3, 2009		REVISED -

**STATE OF ILLINOIS  
DEPARTMENT OF TRANSPORTATION**

**ANCHOR SLAB AND RAILING DETAILS**

SCALE: 1"=20' SHEET NO. 1 OF 1 SHEETS STA. TO STA.

F.A.P. RTE. 325	SECTION (19VBR)BR	COUNTY COLES	TOTAL SHEETS 21	SHEET NO. 21
CONTRACT NO. 74149				
FED. ROAD DIST. NO.		ILLINOIS FED. AID PROJECT AID		