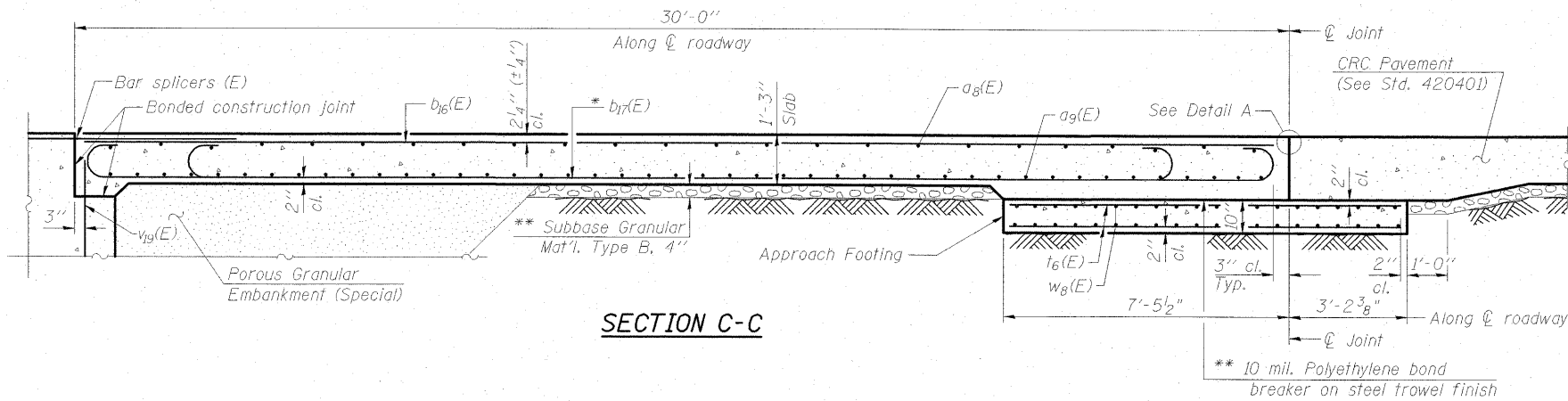


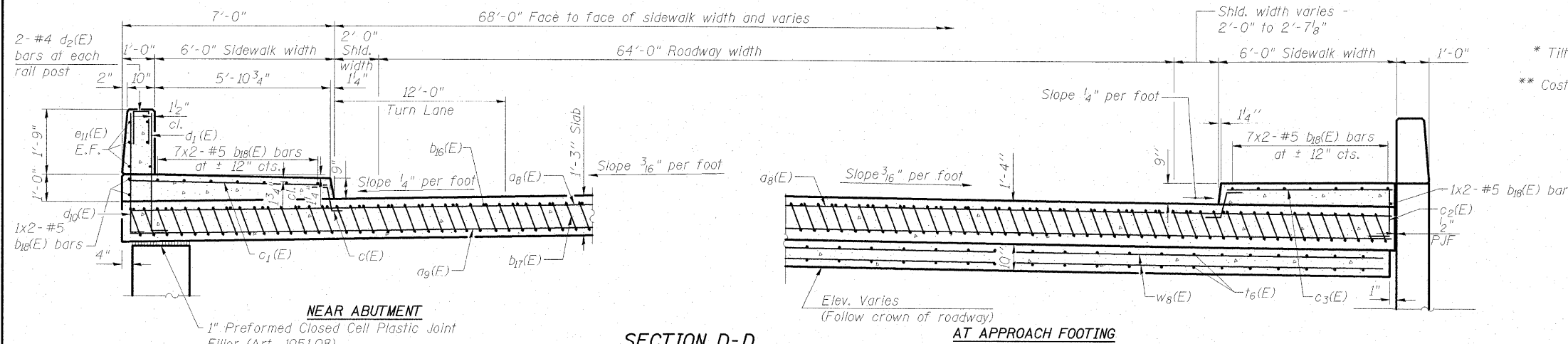
STATE OF ILLINOIS  
DEPARTMENT OF TRANSPORTATION

Notes:

See sheet 12 of 35 for Detail A.  
Approach slab and parapet concrete shall be paid for as Concrete Superstructure.  
Approach footing concrete shall be paid for as Concrete Structures.  
Reinforcement shall be paid for as Reinforcement Bars, Epoxy Coated.  
For  $v_{19}(E)$  bar details, see sheet 19 of 35.  
The approach footing maximum applied service bearing pressure ( $Q_{max}$ ) = 2.0 ksf.  
For bar splicer details, see sheet 32 of 35.  
Cost of excavation for approach footing included with Concrete Structures.  
For Porous Granular Embankment (Special) and drainage treatment details, see sheet 30 of 35.



SECTION C-C



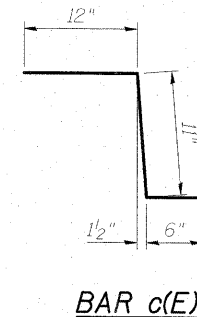
SECTION D-D

(See Plan for dimensions not shown)

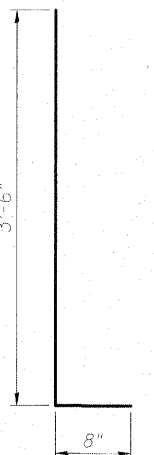
AT APPROACH FOOTING

BILL OF MATERIAL

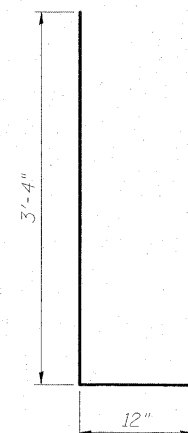
Bar	No.	Size	Length	Shape
$a_8(E)$	75	#4	29'-8"	—
$a_9(E)$	138	#5	29'-11"	—
$b_{16}(E)$	81	#4	29'-8"	—
$b_{17}(E)$	194	#9	29'-9"	—
$b_{18}(E)$	34	#5	16'-7"	—
$c(E)$	60	#5	2'-5"	┌
$c_1(E)$	30	#5	6'-8"	—
$c_2(E)$	30	#5	3'-4"	┌
$c_3(E)$	31	#5	5'-8"	—
$d_1(E)$	29	#6	4'-4"	┌
$d_2(E)$	6	#4	2'-0"	┌
$d_{10}(E)$	29	#4	4'-2"	┌
$e_{11}(E)$	12	#4	13'-10"	—
$t_6(E)$	158	#4	10'-3"	—
$w_8(E)$	120	#5	29'-2"	—
Concrete Superstructure	Cu. Yd.		147.6	
Concrete Structures	Cu. Yd.		25.9	
Reinforcement Bars, Epoxy Coated	Pound		33380	



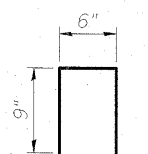
BAR c(E)



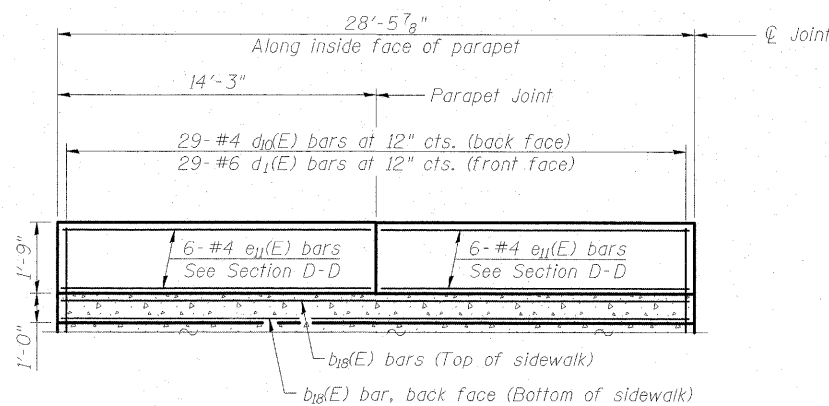
BAR  $d_{10}(E)$



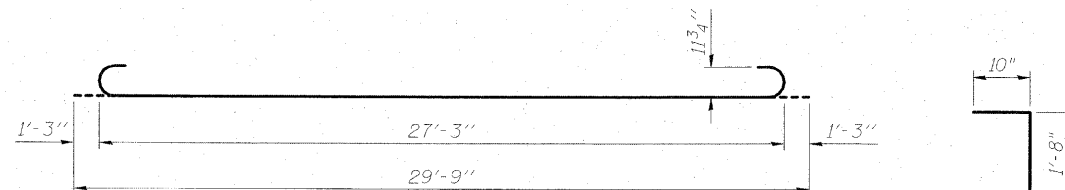
BAR  $d_1(E)$



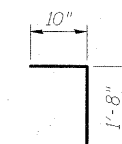
BAR  $d_2(E)$



VIEW E-E



BAR  $b_{17}(E)$



BAR  $c_2(E)$

**ESCA**  
CONSULTANTS, INC.

DESIGNED BY:	MTD	03/09
DRAWN BY:	HAS	03/09
CHECKED BY:	MTD	03/09
APPROVED BY:	RDP	08/09

(Sheet 2 of 2)  
WEST BRIDGE APPROACH SLAB DETAILS  
STRUCTURE NO. 015-0064

SHEET NO. 13	F.A.P. RTE. 325	SECTION (19VBR)BR	COUNTY COLES	TOTAL SHEETS 92	SHEET NO. 37
35 SHEETS	CONTRACT NO. 74149		ILLINOIS FED. AID PROJECT		