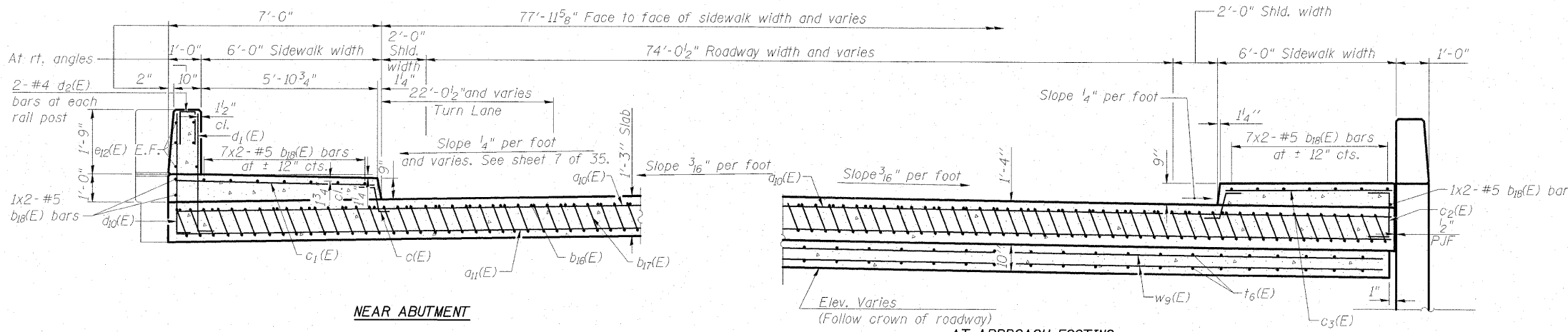
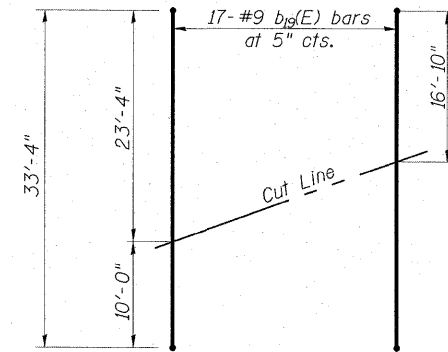
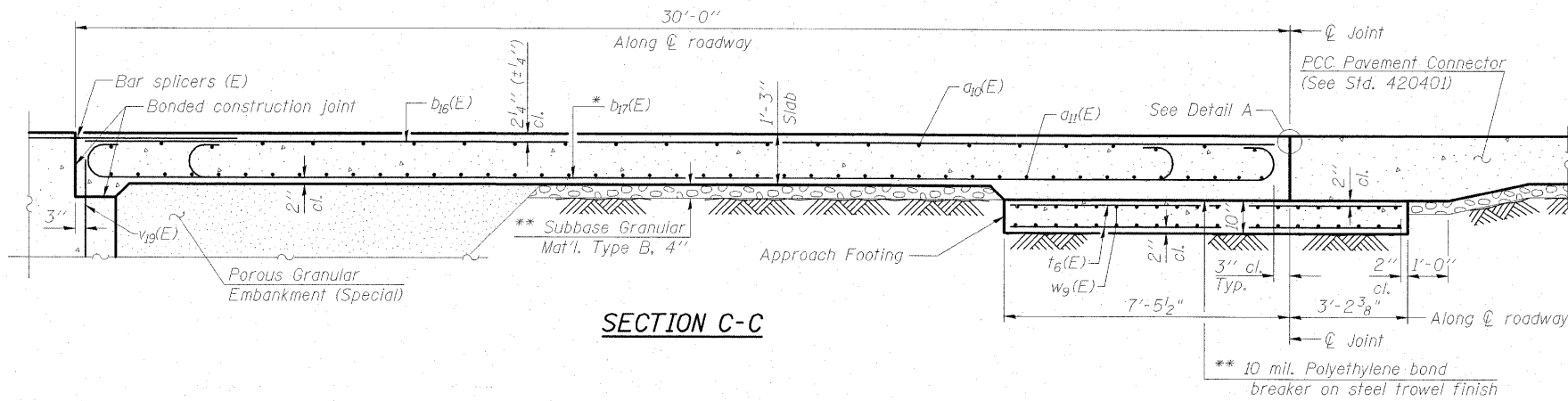


STATE OF ILLINOIS
DEPARTMENT OF TRANSPORTATION

Notes:

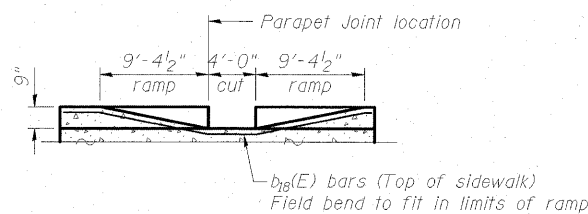
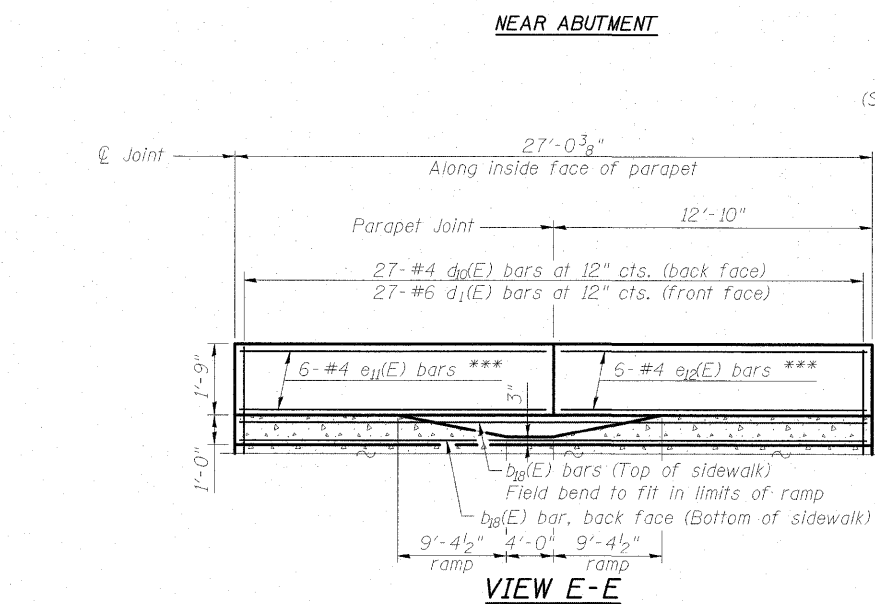
See sheet 14 of 35 for Detail A.
Approach slab and parapet concrete shall be paid for as Concrete Superstructure.
Approach footing concrete shall be paid for as Concrete Structures.
Reinforcement shall be paid for as Reinforcement Bars, Epoxy Coated.
For $v_{19}(E)$ bar details, see sheet 21 of 35.
The approach footing maximum applied service bearing pressure (Q_{max}) = 2.0 ksf.
For bar splicer details, see sheet 32 of 35.
Cost of excavation for approach footing included with Concrete Structures.
For Porous Granular Embankment (Special) and drainage treatment details, see sheet 30 of 35.



FIELD CUTTING DIAGRAM
Order $b_{16}(E)$ full length. Cut as shown and use remainder of bars in bottom of slab.

BILL OF MATERIAL

Bar	No.	Size	Length	Shape
$a_{10}(E)$	100	#4	30'-6"	—
$a_{11}(E)$	184	#5	30'-8"	—
$b_{16}(E)$	111	#4	29'-8"	—
$b_{17}(E)$	221	#9	29'-9"	—
$b_{18}(E)$	34	#5	16'-7"	—
$b_{19}(E)$	17	#9	35'-10"	—
$b_{20}(E)$	3	#5	8'-3"	—
$c(E)$	62	#5	2'-5"	┌
$c_1(E)$	32	#5	6'-8"	┌
$c_2(E)$	29	#5	3'-4"	┌
$c_3(E)$	30	#5	5'-8"	┌
$d_1(E)$	27	#6	4'-4"	┌
$d_2(E)$	6	#4	2'-0"	┌
$d_3(E)$	5	#6	9'-3"	┌
$d_4(E)$	3	#6	4'-7"	┌
$d_{10}(E)$	27	#4	4'-2"	┌
$e_{11}(E)$	6	#4	13'-10"	—
$e_{12}(E)$	6	#4	12'-6"	—
$t_6(E)$	222	#4	10'-3"	—
$w_9(E)$	160	#5	30'-11"	—
Concrete Superstructure		Cu. Yd.	199.7	
Concrete Structures		Cu. Yd.	36.5	
Reinforcement Bars, Epoxy Coated		Pound	42960	



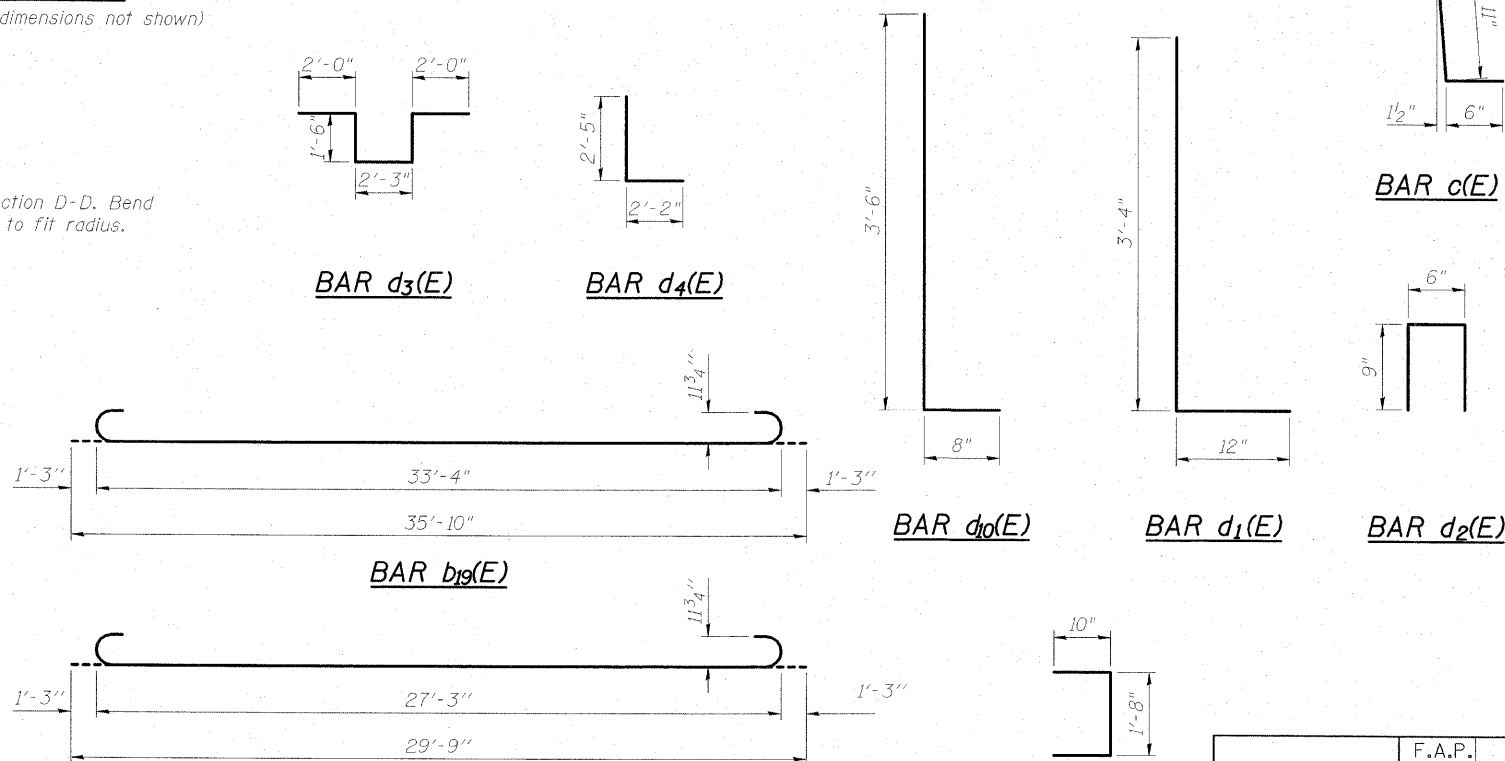
SECTION D-D
(See Plan for dimensions not shown)

AT APPROACH FOOTING

BAR $d_3(E)$

BAR $d_4(E)$

BAR $c(E)$



ESCA
CONSULTANTS, INC.
DESIGNED BY: MTD 03/09
DRAWN BY: HAS 03/09
CHECKED BY: MTD 03/09
APPROVED BY: RDP 08/09

(Sheet 2 of 2)
EAST BRIDGE APPROACH SLAB DETAILS
STRUCTURE NO. 015-0064

SHEET NO. 15 35 SHEETS	F.A.P. RTE. 325	SECTION (19VBR)BR	COUNTY COLES	TOTAL SHEETS 92	SHEET NO. 39
	CONTRACT NO. 74149				
FED. ROAD DIST. NO.		ILLINOIS FED. AID PROJECT			