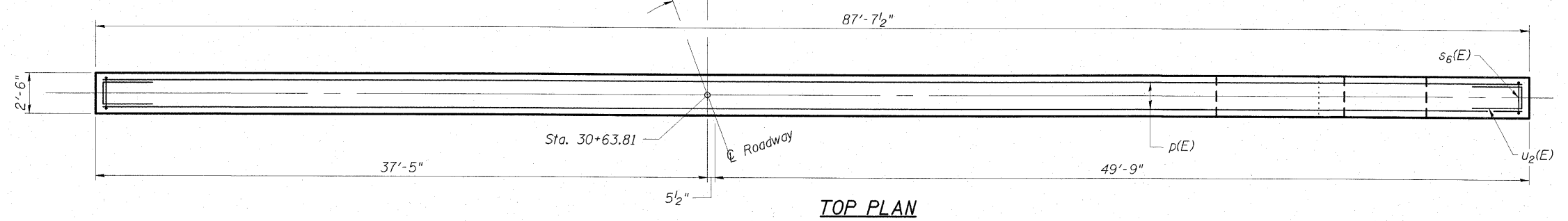
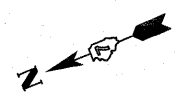
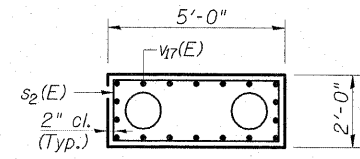


0150064-7 4149-24-2-2.dgn 7/31/2009 12:37:21 PM HAA

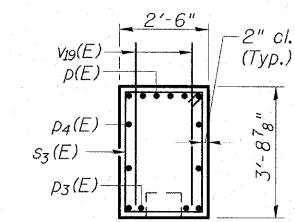
STATE OF ILLINOIS  
DEPARTMENT OF TRANSPORTATION



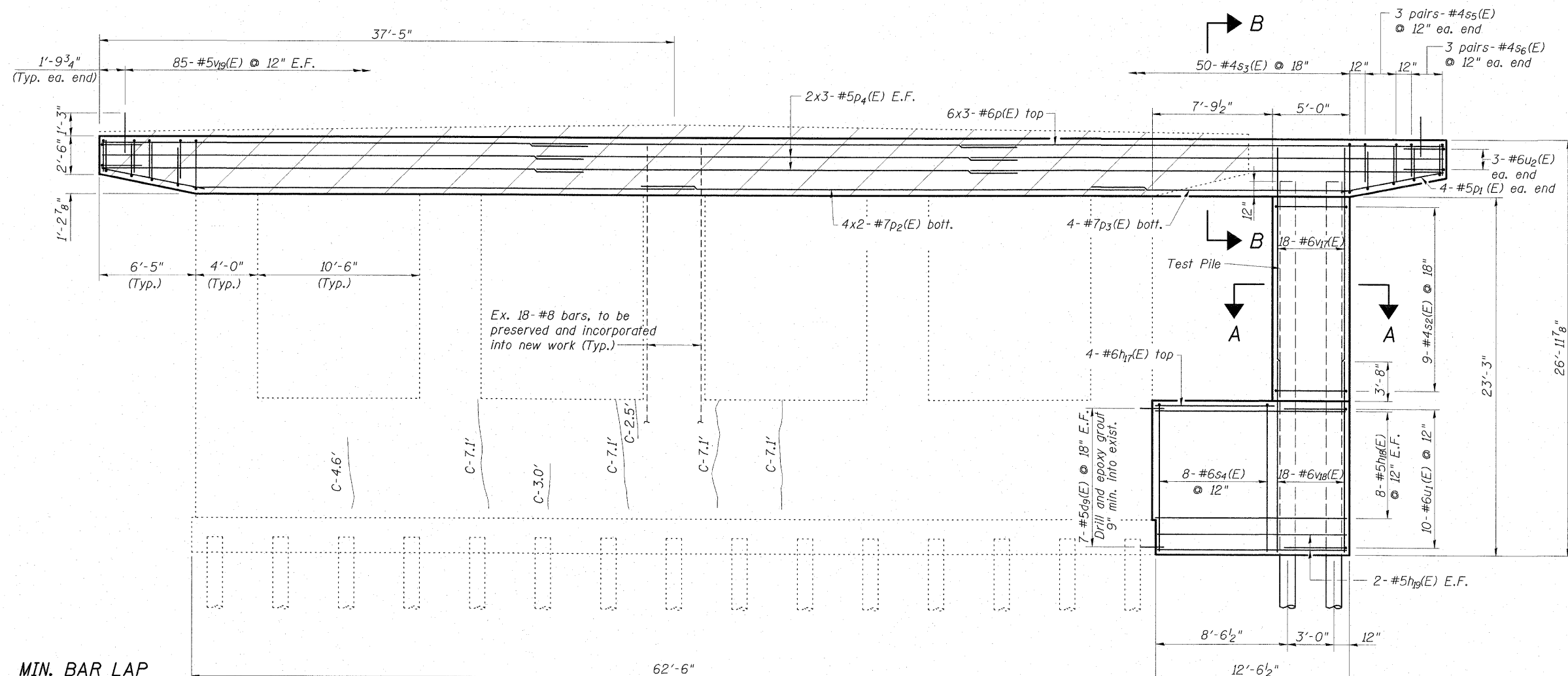
TOP PLAN



SECTION A-A



SECTION B-B



WEST ELEVATION

(See sheet 26 of 35 for Repairs to East Elevation)

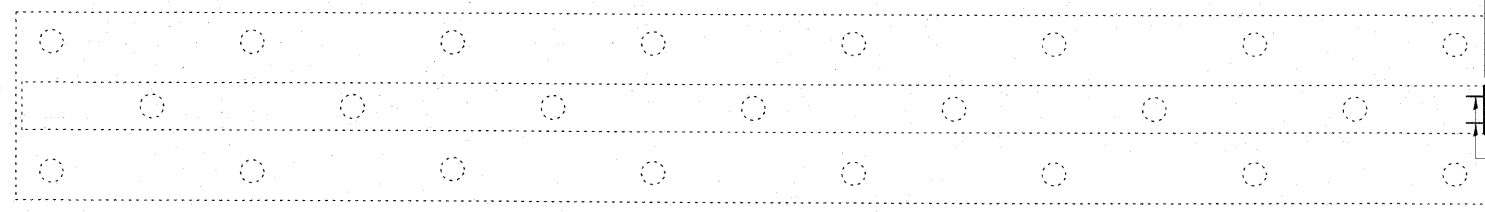
MIN. BAR LAP

|    |       |
|----|-------|
| #5 | 3'-0" |
| #6 | 3'-7" |
| #7 | 3'-5" |

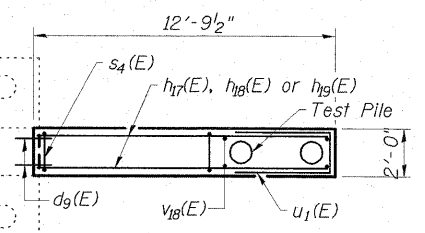
**PILE DATA**  
Type: Metal Shell 12"φ x 0.25" wall  
Nominal Required Bearing: 300 kips  
Factored Resistance Available: 100 kips  
Estimated Length: 84'  
No. Production Piles: 1  
No. Test Piles: 1

**ESCA**  
CONSULTANTS, INC.  
DESIGNED BY: RDP/DAJ 11/08  
DRAWN BY: DWH/cj 11/08  
CHECKED BY: RDP 03/09  
APPROVED BY: RDP 08/09

**REPAIR LEGEND**  
Inspection Date: 03/03/09  
C-6' Crack to be epoxy injected



FOOTING PLAN



NOTES

1. For Bill of Material and Bar Bending Details see sheet 26 of 35.
2. For pile details see sheet 31 of 35.
3. Bars indicated thus: 6x3-#6 etc. Indicates 6 lines of bars with 3 lengths per line.

PIER 2  
STRUCTURE NO. 015-0064

|                           |             |           |                           |              |           |
|---------------------------|-------------|-----------|---------------------------|--------------|-----------|
| SHEET NO. 24<br>35 SHEETS | F.A.P. RTE. | SECTION   | COUNTY                    | TOTAL SHEETS | SHEET NO. |
|                           | 325         | (19VBR)BR | COLES                     | 92           | 48        |
| FED. ROAD DIST. NO.       |             |           | ILLINOIS FED. AID PROJECT |              |           |
| CONTRACT NO. 74149        |             |           |                           |              |           |