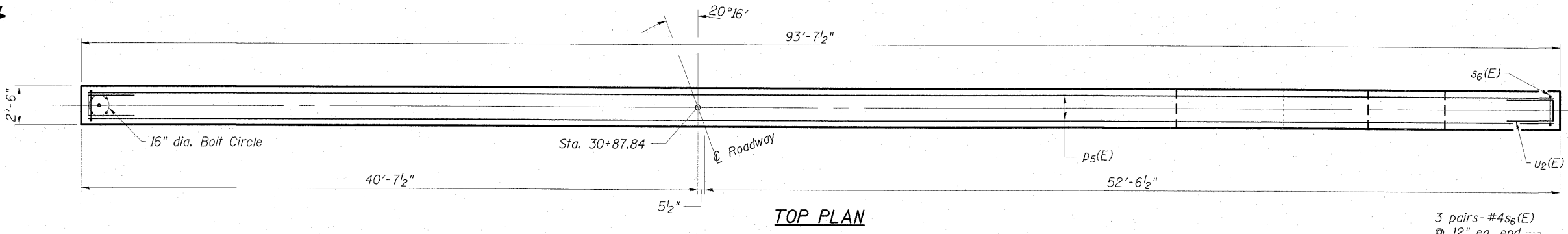
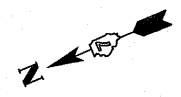
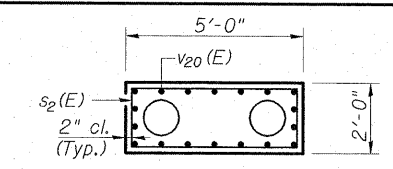


0150064-74149-25-P-3.dgn 7/31/2009 12:37:27 PM HAS

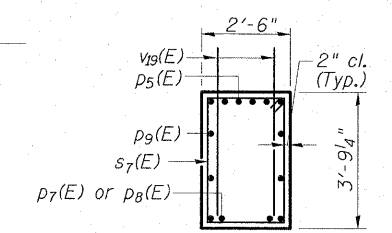
STATE OF ILLINOIS  
DEPARTMENT OF TRANSPORTATION



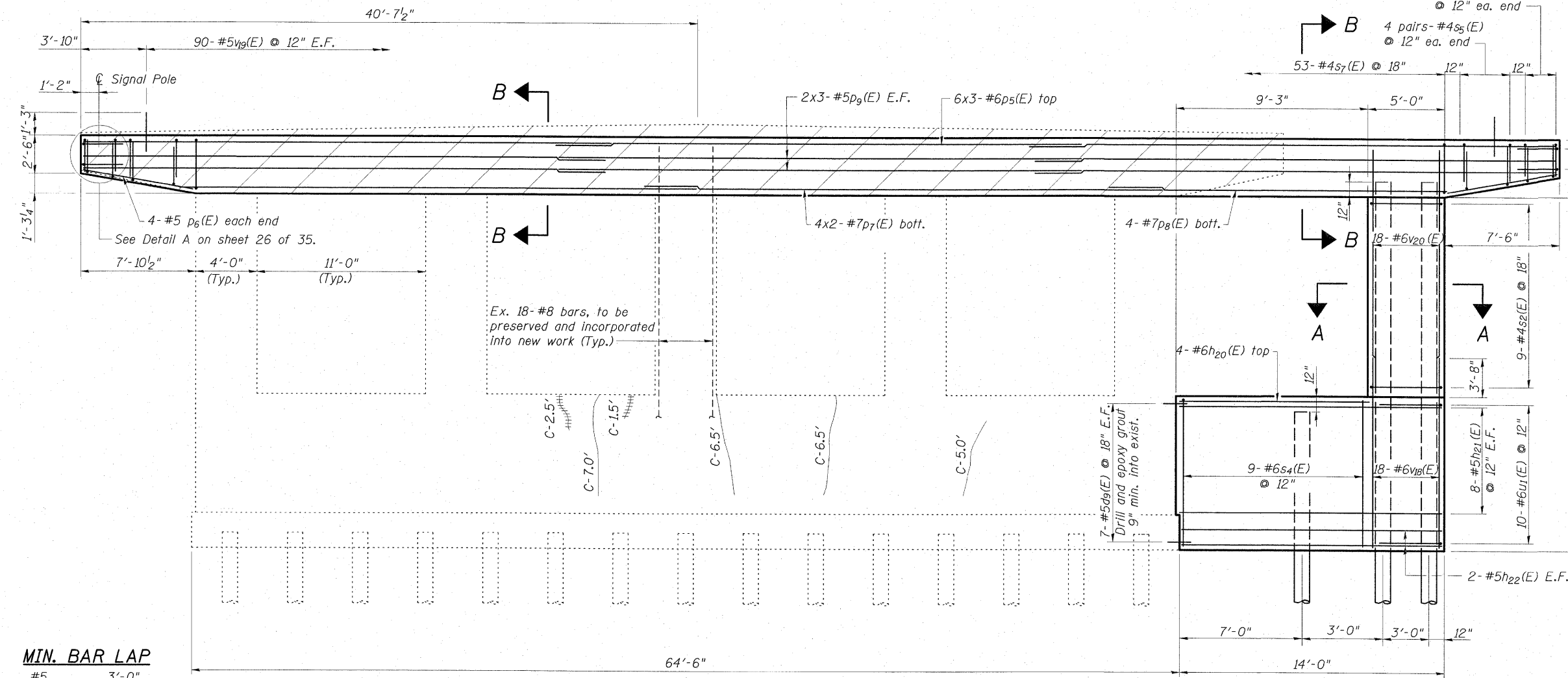
TOP PLAN



SECTION A-A



SECTION B-B



WEST ELEVATION  
(See sheet 26 of 35 for Repairs to East Elevation)

**MIN. BAR LAP**

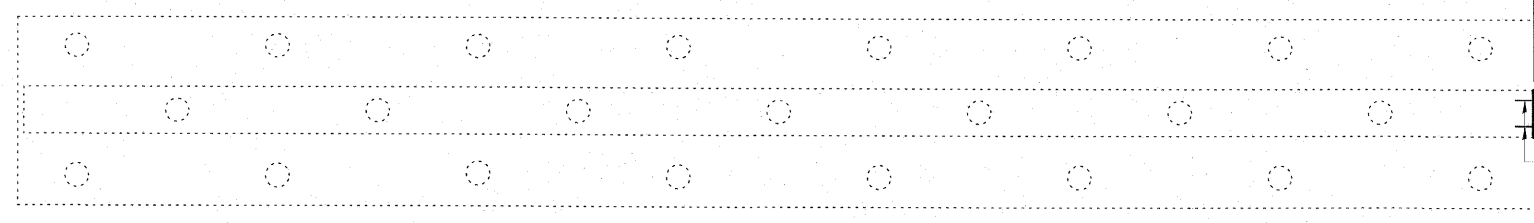
#5	3'-0"
#6	3'-7"
#7	3'-5"

**PILE DATA**  
Type: Metal Shell 12"φ x 0.25" wall  
Nominal Required Bearing: 300 kips  
Allowable Resistance Available: 100 kips  
Estimated Length: 2 @ 84'; 1 @ 69'  
No. Production Piles: 3  
No. Test Piles: 0

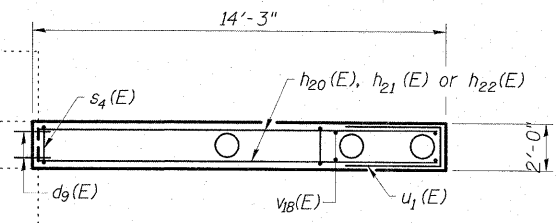
**ESCA**  
CONSULTANTS, INC.

DESIGNED BY:	RDP/DAJ	11/08
DRAWN BY:	DWH/cj	11/08
CHECKED BY:	RDP	03/09
APPROVED BY:	RDP	08/09

**REPAIR LEGEND**  
Inspection Date: 03/03/09  
C-6' Crack to be epoxy injected



FOOTING PLAN



- NOTES**
1. For Bill of Material and Bar Bending Details see sheet 26 of 35.
  2. For pile details see sheet 31 of 35.
  3. Bars indicated thus: 6x3-#6 etc. Indicates 6 lines of bars with 3 lengths per line.

**PIER 3**  
**STRUCTURE NO. 015-0064**

SHEET NO. 25 35 SHEETS	F.A.P. RTE.	SECTION	COUNTY	TOTAL SHEETS	SHEET NO.
	325	(19VBR)BR	COLES	92	49
			CONTRACT NO. 74149		
FED. ROAD DIST. NO.		ILLINOIS FED. AID PROJECT			