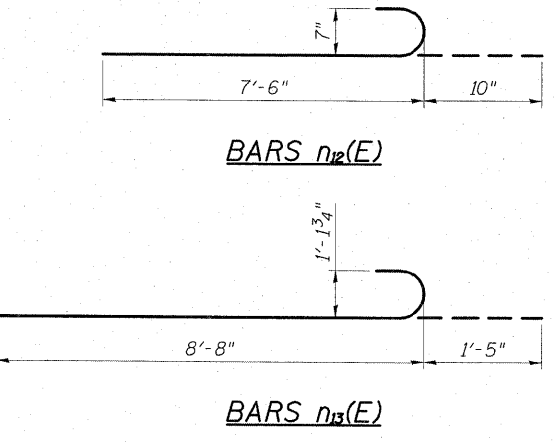
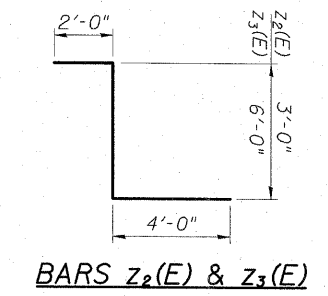
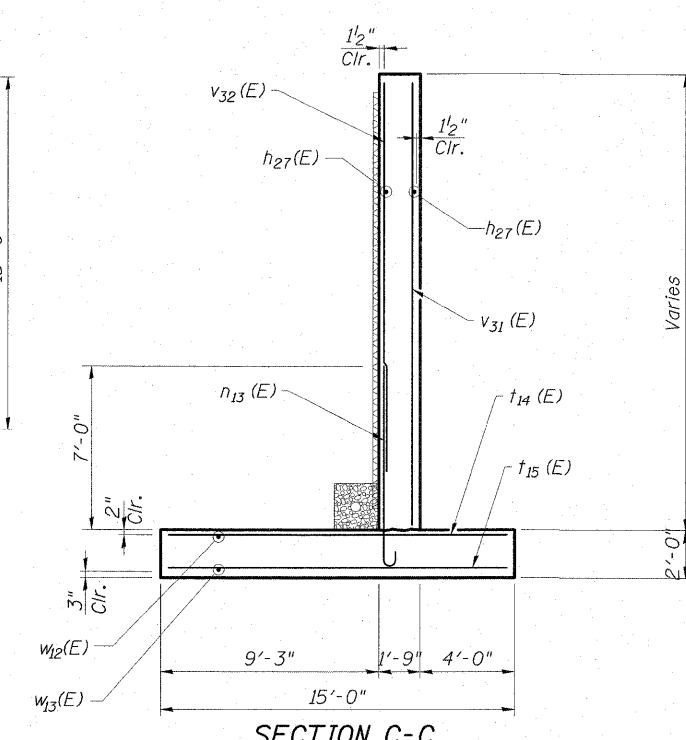
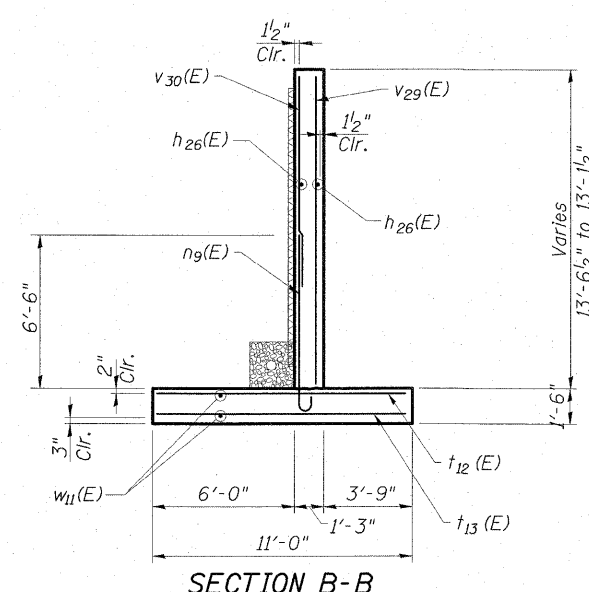
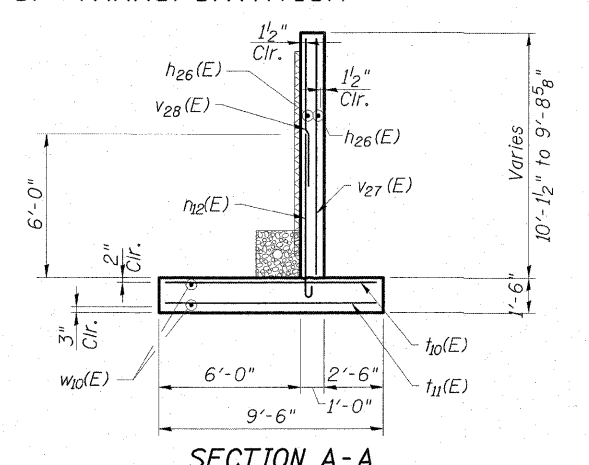
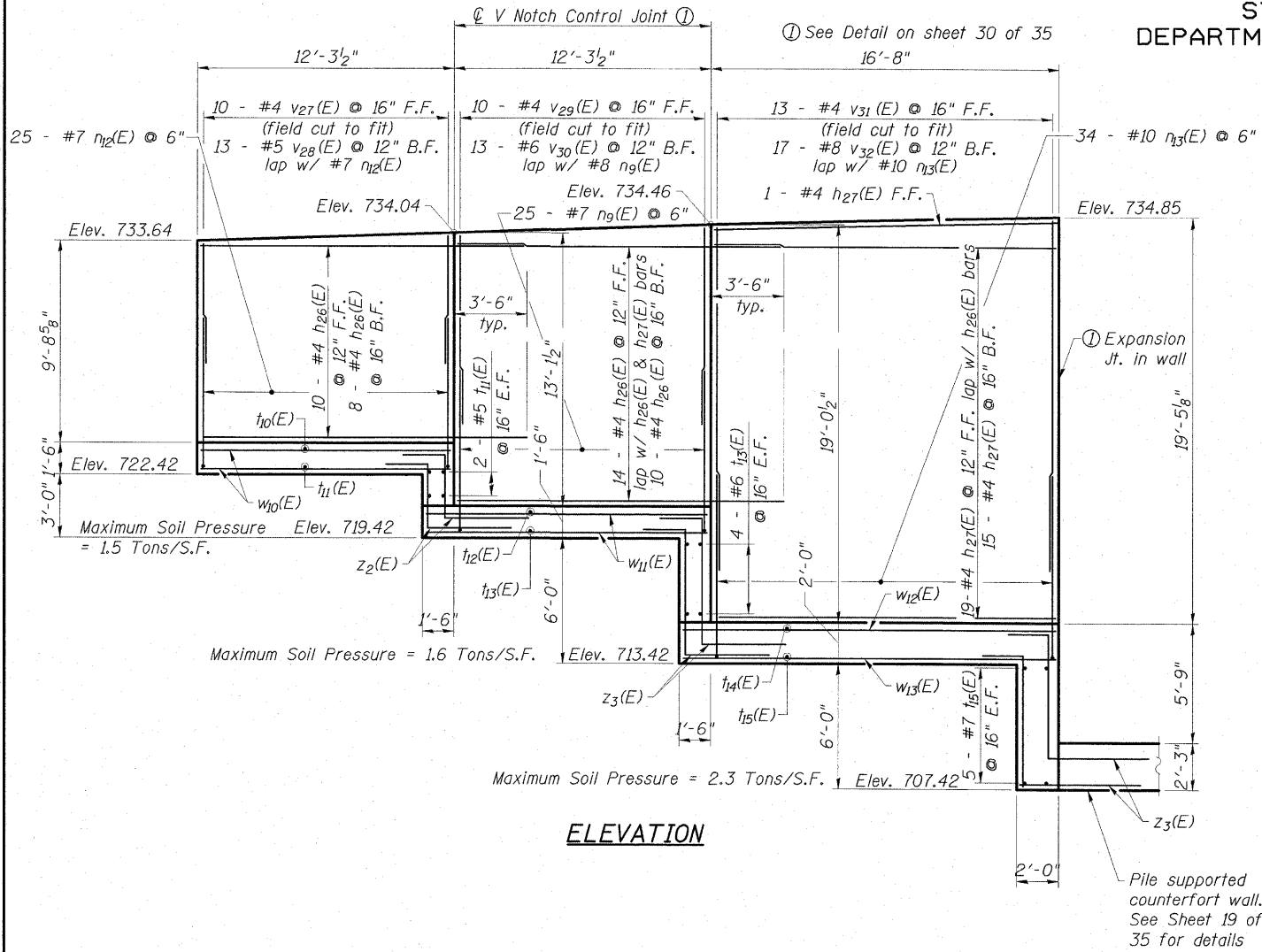


0150064-74149-28-SWRetWall.dgn 8/4/2009 6:21:25 AM H45

STATE OF ILLINOIS  
DEPARTMENT OF TRANSPORTATION

SW RETAINING WALL  
BILL OF MATERIAL



Bar	No.	Size	Length	Shape
n <sub>26</sub> (E)	42	#4	15'-7"	—
n <sub>27</sub> (E)	35	#4	16'-4"	—
n <sub>9</sub> (E)	25	#8	8'-7"	—
n <sub>12</sub> (E)	25	#7	8'-4"	—
n <sub>13</sub> (E)	34	#10	10'-1"	—
t <sub>10</sub> (E)	13	#7	9'-2"	—
t <sub>11</sub> (E)	17	#5	9'-2"	—
t <sub>12</sub> (E)	21	#7	10'-8"	—
t <sub>13</sub> (E)	22	#6	10'-8"	—
t <sub>14</sub> (E)	36	#8	14'-8"	—
t <sub>15</sub> (E)	28	#7	14'-8"	—
v <sub>27</sub> (E)	10	#4	9'-10"	—
v <sub>28</sub> (E)	13	#5	6'-0"	—
v <sub>29</sub> (E)	10	#4	13'-3"	—
v <sub>30</sub> (E)	13	#6	9'-0"	—
v <sub>31</sub> (E)	13	#4	19'-2"	—
v <sub>32</sub> (E)	17	#8	16'-0"	—
w <sub>10</sub> (E)	20	#5	12'-0"	—
w <sub>11</sub> (E)	22	#5	13'-6"	—
w <sub>12</sub> (E)	15	#6	17'-10"	—
w <sub>13</sub> (E)	15	#5	17'-10"	—
z <sub>2</sub> (E)	14	#5	9'-0"	┘
z <sub>3</sub> (E)	36	#5	12'-0"	┘
Concrete Structures		Cu. Yd.	77.9	
Reinforcement Bars, Epoxy Coated		Pound	9890	
Structure Excavation		Cu. Yd.	440	

MIN. BAR LAP

- #5 ..... 1'-8"
- #6 ..... 2'-0"
- #8 ..... 3'-8"

**ESCA**  
CONSULTANTS, INC.

DESIGNED BY: RDP 11/08  
DRAWN BY: DWH 11/08  
CHECKED BY: MTD 03/09  
APPROVED BY: RDP 08/09

SW RETAINING WALL  
STRUCTURE NO. 015-0064

SHEET NO. 28 35 SHEETS	F.A.P. RTE.	SECTION	COUNTY	TOTAL SHEETS	SHEET NO.
	325	(19VBR)BR	COLES	92	52
FED. ROAD DIST. NO.			ILLINOIS FED. AID PROJECT		
CONTRACT NO. 74149					