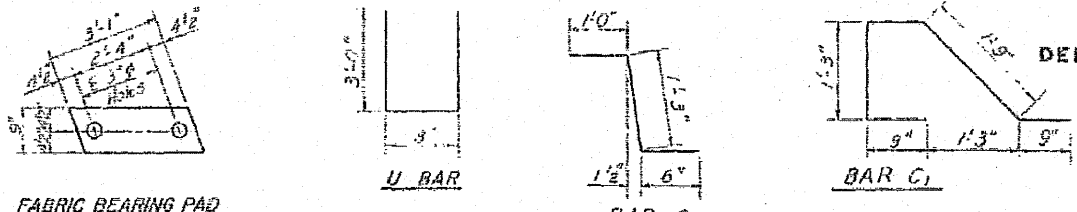


STATE OF ILLINOIS DEPARTMENT OF TRANSPORTATION

Sheet No.	55	28	20 SHEETS
Project No.	* 19(VBR 1-1), (1-2C) RS 4 1983-1		

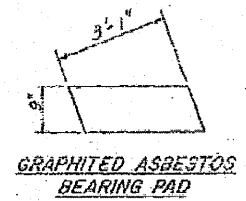


FABRIC BEARING PAD

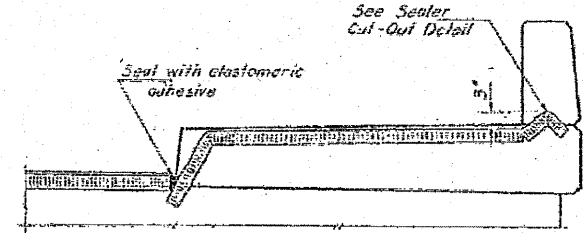
U BAR

BAR C

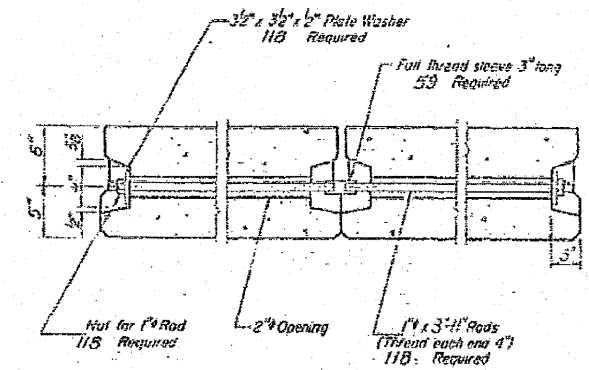
BAR C



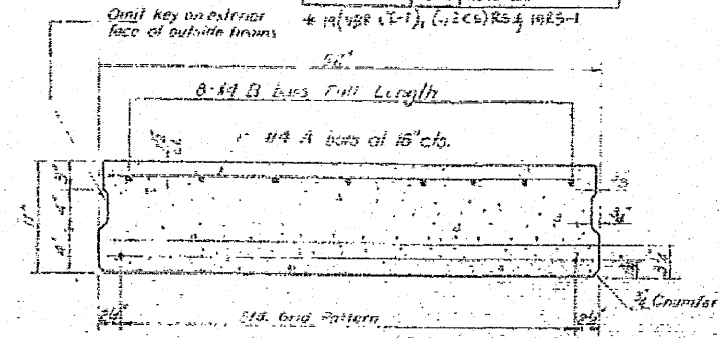
GRAPHITED ASBESTOS BEARING PAD



END OF SEALER TREATMENT

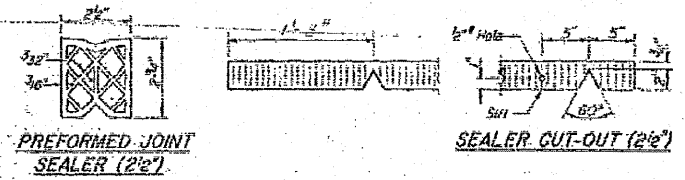


TYPICAL TRANSVERSE TIE ASSEMBLY



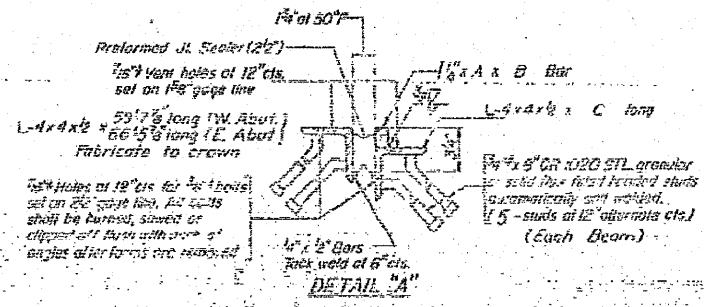
TYPICAL SECTION

1/2" Strands Each Strand Stressed to 20,000 lbs.
 3-Strands 1-3/4" up, 4-Strands 3/4" up (Spans 1 & 3)
 5-Strands 1-1/4" up (Span 4)
 Note: Place strands symmetrically about C of beam

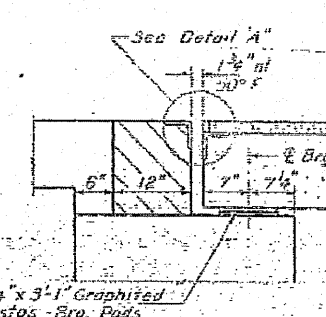


PREFORMED JOINT SEALER (2'x2')

SEALER CUT-OUT (2'x2')

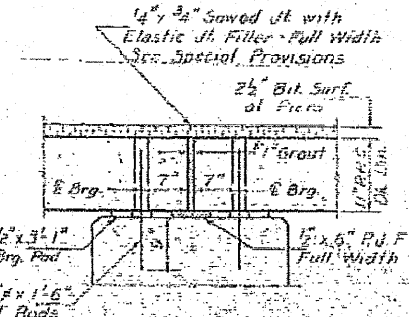


DETAIL 'A'



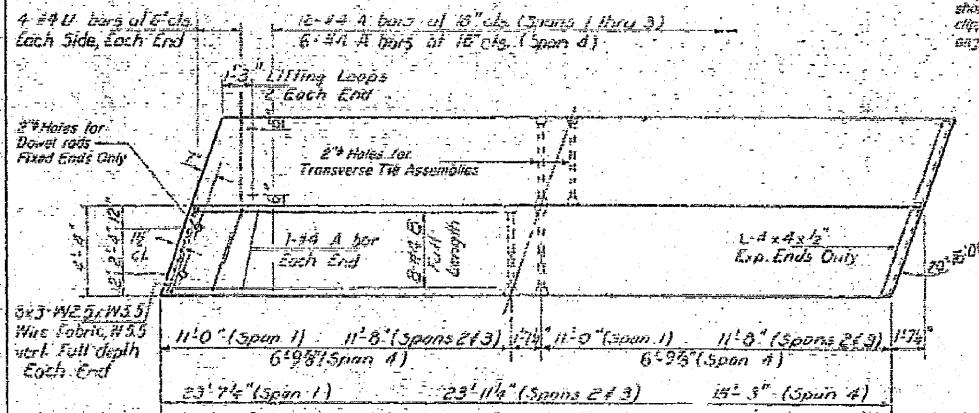
SECTION THRU ABUTS.

See Detail 'A'
 1/2" x 1/2" x 1/2" Bar
 2-3/4" x 1-6" Dowel Rods
 1-9" x 1/2" x 3'-1" Fabric Erg. Pad



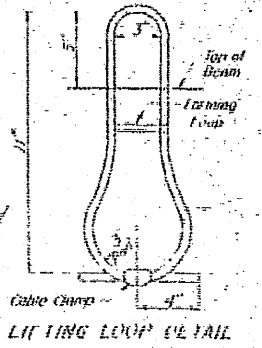
SECTION THRU PIERS

*1" Joint shall be packed with a very dry mix of 2:1 sand and RC mortar. This dimension may vary plus or minus to accommodate tolerance in beam lengths.



PLAN

END PLAN



LIFTING LOOP DETAIL

DIMENSIONS A, B, C

Location	Beam	Beam B	Beam C	Beam 15	R.C. Slab
W. Abut.	A	2'-11 1/2"	4'-7 1/2"	2'-11 1/2"	
	B	2'-0 1/2"	4'-4 1/2"	2'-0 1/2"	
	C	2'-0 1/2"	4'-4 1/2"	2'-0 1/2"	
E. Abut.	A	2'-11 1/2"	4'-7 1/2"	2'-11 1/2"	
	B	2'-11 1/2"	4'-7 1/2"	2'-11 1/2"	
	C	2'-0 1/2"	4'-4 1/2"	2'-0 1/2"	

Note: Work This Sheet With Sheets No. 2, 4 & 5

NOTES

Prestressing steel shall be non-galvanized high strength, stress-relieved 7-wire strand, Grade 270. The nominal diameter shall be 7/16" and the nominal cross-sectional area shall be 0.153 sq. in. Lifting loops shall be 1/2" diameter, G-25 class wire rope with fiber core and shall have a minimum ultimate tensile strength of 21,000 lbs. The 1/4" rods in the transverse tie assembly shall be fabricated in a way to put the threads out. Pieces that receive transverse tie bar on outside shall be fitted with gasket after transverse tie assembly is in place. Longitudinal shear keys shall be packed with a very dry mix of 2:1 sand and RC mortar. Any beams having shear keys, holes for the dowel anchors shall be drilled with the sub-structure and the anchor dowels shall be grouted in place. Reinforcement bars shall conform to the requirements of AASHTO M-31 or M-53, Grade 60.

Plans of construction and reinforcement shall show the location of bearing stiffeners, if any are used, and of grouting in piers where keys are included in and grout and for prestressing concrete in the piers.

BILL OF MATERIAL

Bar	No.	Size	Length	Shape
Precast Prestressed Concrete Box Girders (11')			3411'	5,947'

SUPERSTRUCTURE
 F.A.P. RT. 91 SEC. 19VBR
 COLES COUNTY
 STA. 30+63.74