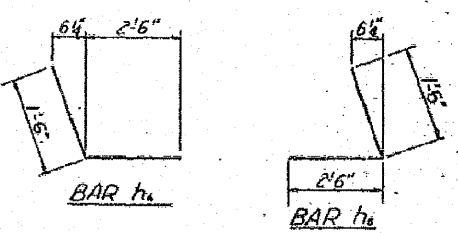
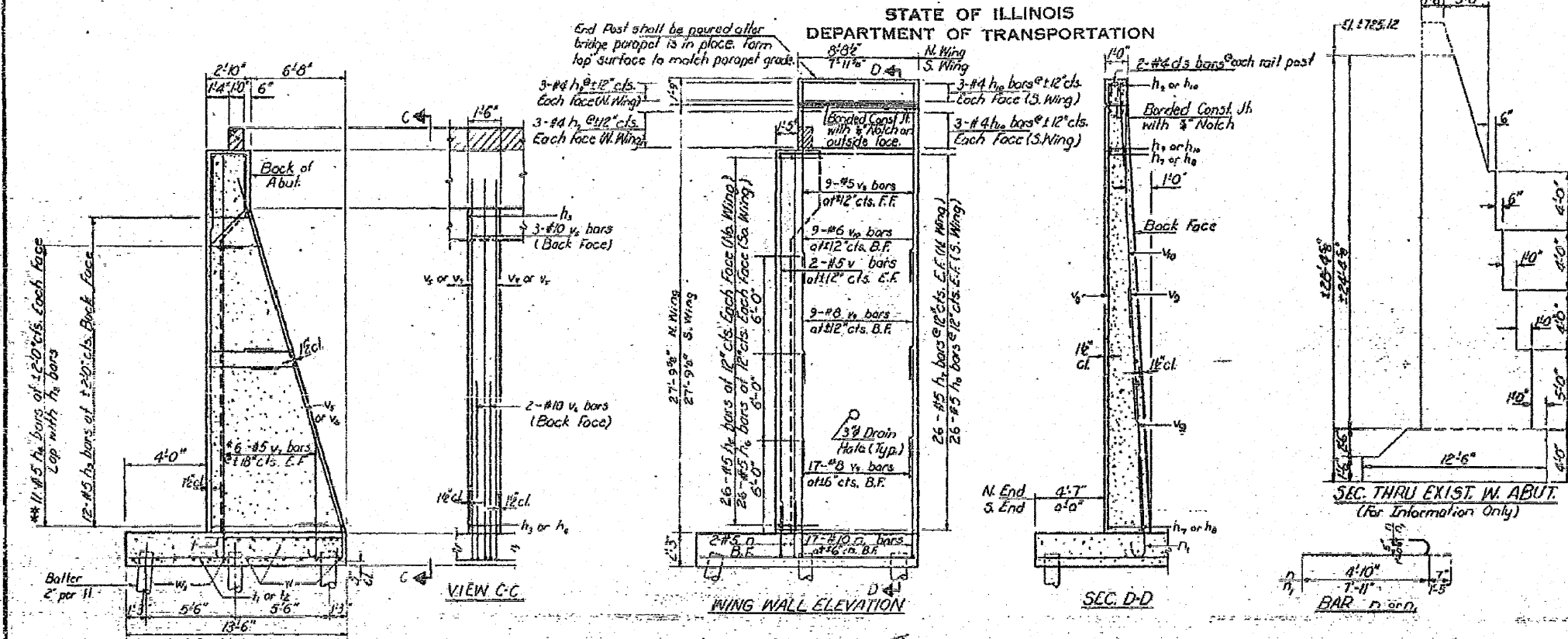


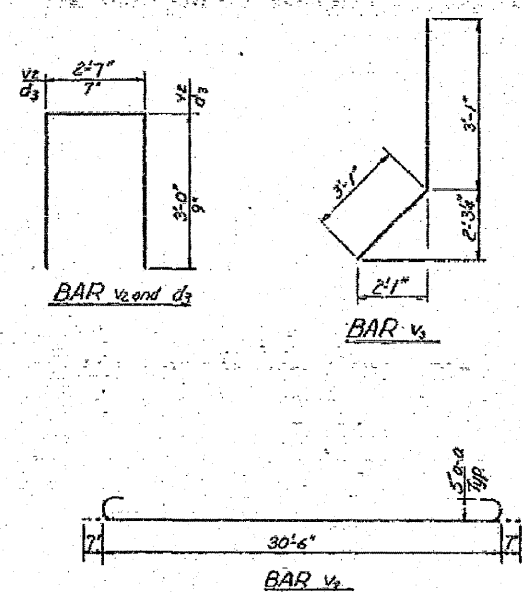
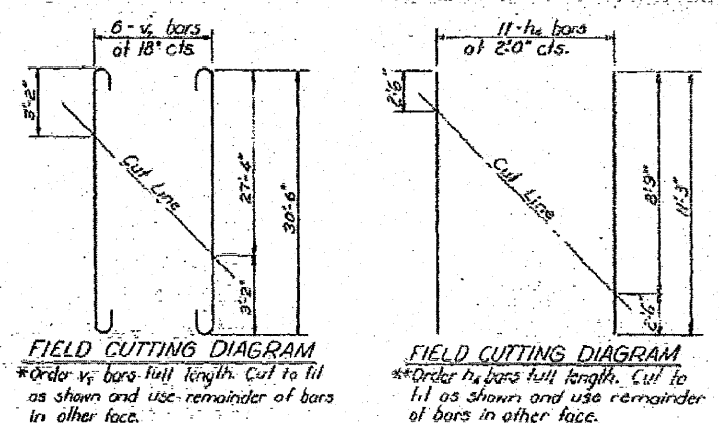
PROJECT NO.	SECTION	DATE	SCALE	SHEET NO.	TOTAL SHEETS
10-01	10	6/5	3/5	10 a	20 SHEETS
#19 (VBR & I-1), (I-2) & I-3 1985-1					



WEST ABUTMENT
BILL OF MATERIAL

Bar	No.	Size	Length	Shape	
d ₃	4	#4	2'-1"	□	
h ₁	72	#3	25'-11"	▬	
h ₁₁	66	#6	26'-2"	▬	
h ₂	9	#5	25'-2"	▬	
h ₃	77	#5	6'-5"	▬	
h ₄	70	#5	11'-3"	▬	
h ₅	52	#5	1'-0"	▬	
h ₆	52	#5	1'-0"	▬	
h ₇	52	#5	9'-10"	▬	
h ₈	52	#5	9'-1"	▬	
h ₉	12	#5	8'-8"	▬	
h ₁₀	12	#5	7'-8"	▬	
h ₁₁	100	#5	5'-5"	▬	
h ₁₂	34	#10	9'-4"	▬	
h ₁₃	106	#5	10'-0"	▬	
h ₁₄	82	#8	14'-7"	▬	
h ₁₅	80	#8	3'-9"	▬	
v ₁	58	#5	25'-6"	▬	
v ₂	43	#5	20'-6"	▬	
v ₃	14	#5	8'-7"	▬	
v ₄	74	#5	6'-2"	▬	
v ₅	146	#5	2'-8"	▬	
v ₆	21	#10	27'-10"	▬	
v ₇	14	#10	18'-0"	▬	
v ₈	42	#5	31'-8"	▬	
v ₉	18	#5	29'-4"	▬	
v ₁₀	52	#8	9'-8"	▬	
v ₁₁	18	#6	12'-6"	▬	
w	51	#6	27'-10"	▬	
w ₁	18	#4	27'-4"	▬	
Class X Concrete				Cu yd	256.9
Reinforcement Bars				Pound	29,200
Concrete Piles				Lin. Ft.	2736
Test Piles Concrete				Each	1

*** Changed from original length



DESIGNED: *Richard Brunetta*
CHECKED: *Richard Brunetta*
DRAWN: *R. Daly*
CHECKED: *R.B.*

March 3 10 80
EXAMINED: *Carl E. Thompson*
PASSED:
APPROVED:

WEST ABUTMENT
DETAILS
E.A.P. RES. SEC. 19 VBR
COLES COUNTY
STA. 30+63.74

Revised: 6-21-80 R.D.