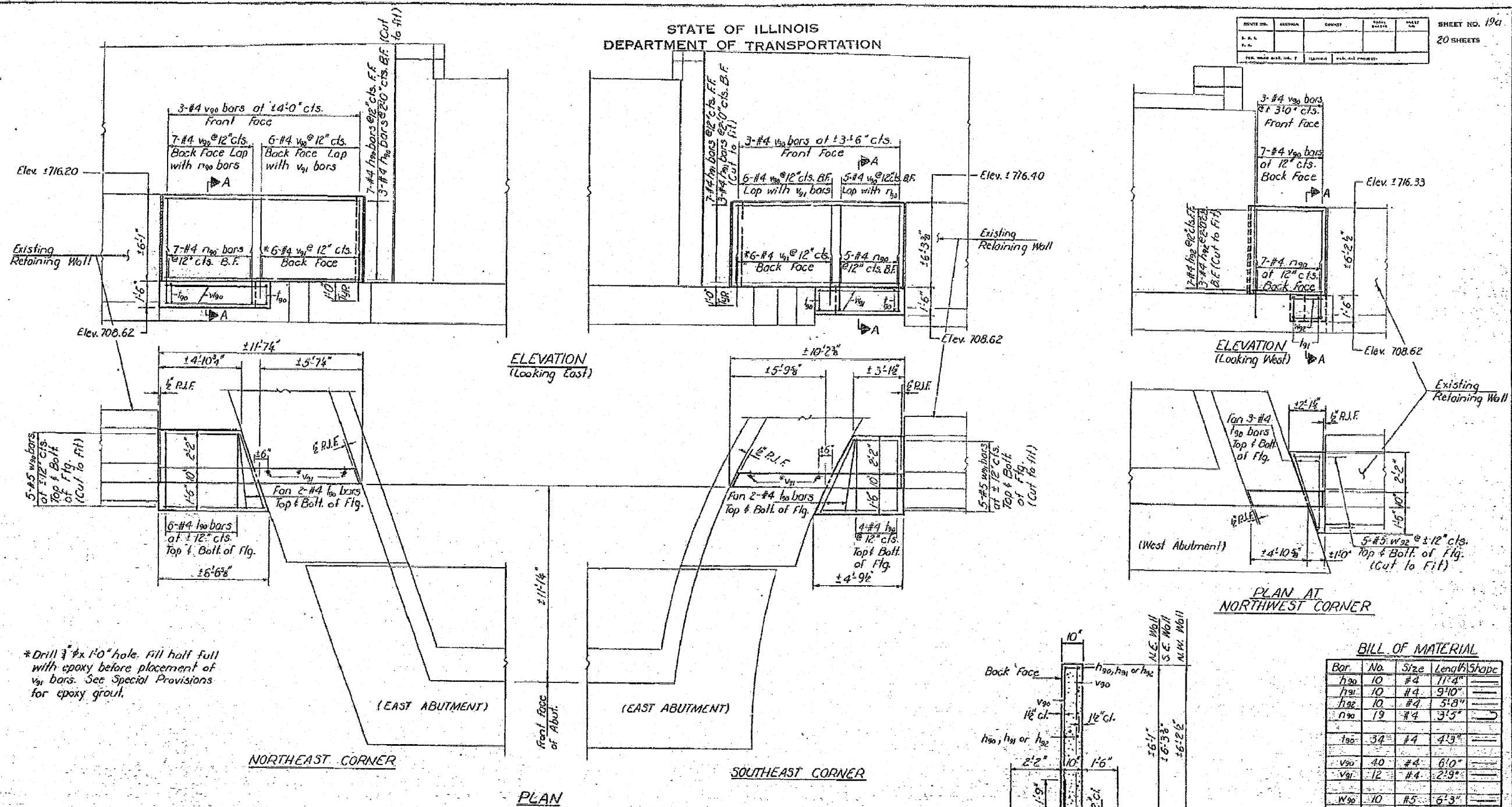


STATE OF ILLINOIS
DEPARTMENT OF TRANSPORTATION



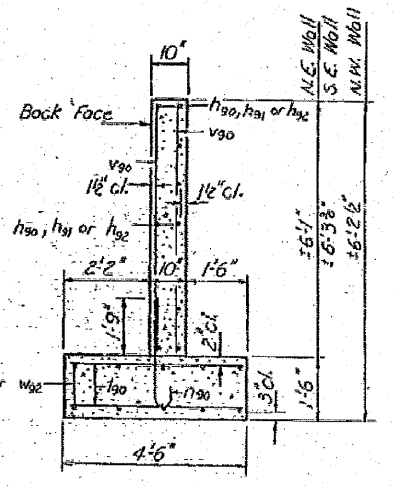
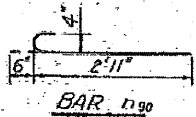
* Drill 3/4" x 1'-0" hole. Fill half full with epoxy before placement of v_{91} bars. See Special Provisions for epoxy grout.

BILL OF MATERIAL

Bar	No.	Size	Length	Shape
h_{30}	10	#4	11'-4"	—
h_{91}	10	#4	9'-10"	—
h_{92}	10	#4	5'-8"	—
n_{90}	19	#4	3'-5"	—
l_{90}	34	#4	4'-3"	—
v_{90}	40	#4	6'-0"	—
v_{91}	12	#4	2'-9"	—
w_{90}	10	#5	6'-3"	—
w_{91}	10	#5	4'-9"	—
w_{92}	10	#5	1'-10"	—
Class X Concrete			Cu. Yd.	8.0
Reinforcement Bars			Pound	630

DESIGNED: *[Signature]*
 CHECKED: Rick Brunette
 DRAWN: R. Doly
 CHECKED: R.L. *[Signature]*

EXAMINED: _____
 PASSED: _____
 APPROVED: _____



Max. Soil Pressure = 1830 Lbs. per Sq. Ft.

ADDITIONAL
RETAINING WALL DETAILS
F.A.P. RT. 91 SEC. 19VBR
COLES COUNTY
STA. 30+63.74