

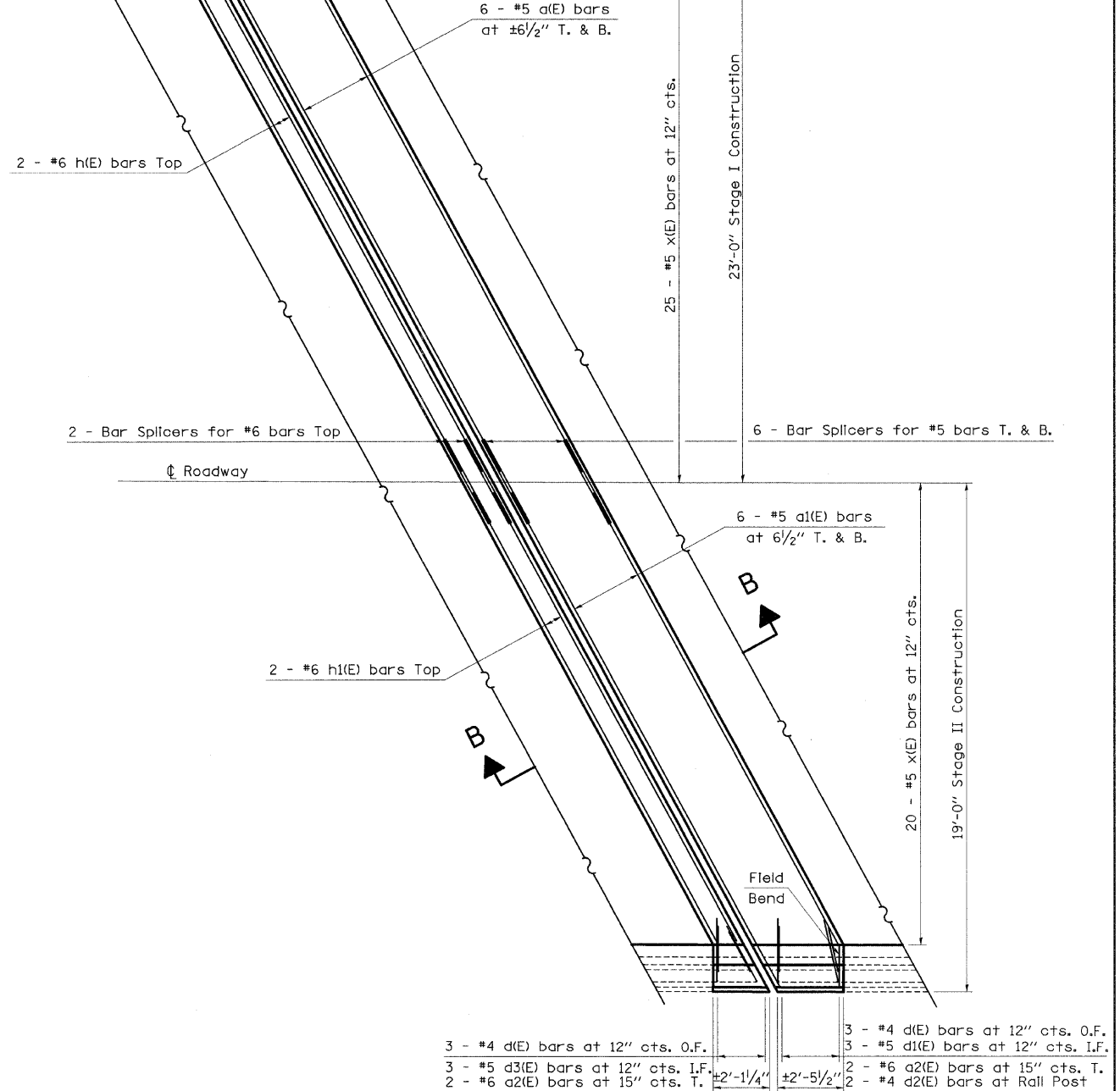
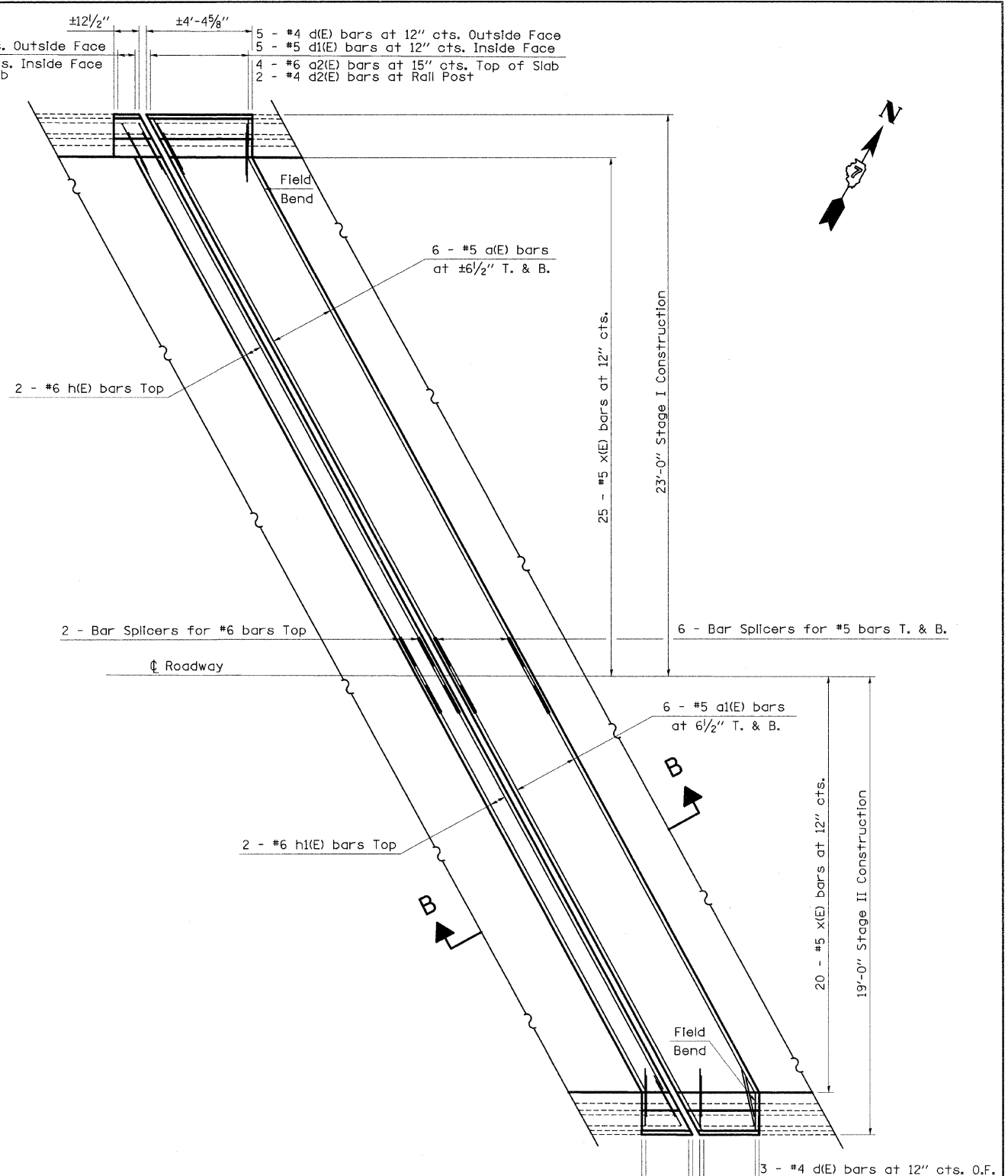
BILL OF MATERIAL

BAR	NUMBER OF BARS	TOTAL	SIZE	LENGTH	SHAPE
a (E)	24	24	#5	25' - 4"	—
a1(E)	24	24	#5	21' - 3"	—
a2(E)	9	18	#6	4' - 0"	—
d (E)	13	26	#4	4' - 8"	J
d1(E)	8	16	#5	3' - 5"	/
d2(E)	4	8	#4	2' - 1"	□
d3(E)	5	10	#4	4' - 1"	J
h (E)	4	4	#6	23' - 5"	—
h1(E)	4	4	#6	19' - 3"	—
x(E)	50	90	#5	3' - 3"	┌

CONCRETE REMOVAL	CU. YD.	11.6
REINFORCEMENT BARS (EPOXY COATED)	POUND	3410
CONCRETE SUPERSTRUCTURE	CU. YD.	13.5

REINFORCEMENT BARS DESIGNATED (E) SHALL BE EPOXY COATED

EXISTING PARTIAL PLAN
(West Abutment shown; East Abutment similar)



PROPOSED PARTIAL PLAN
(West Abutment shown; East Abutment similar)