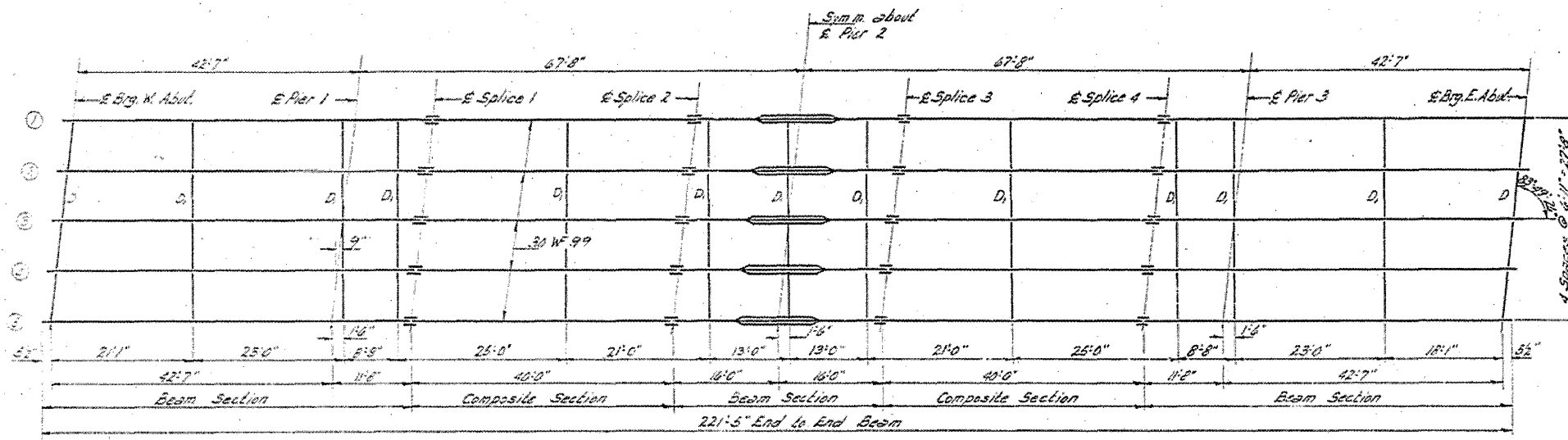


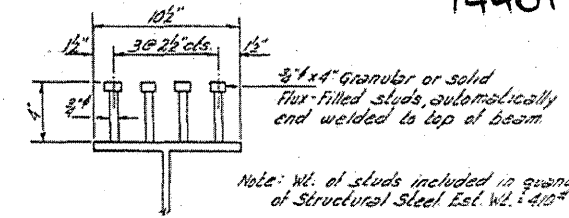
STATE OF ILLINOIS  
DEPARTMENT OF PUBLIC WORKS & BUILDINGS  
DIVISION OF HIGHWAYS

ROUTE NO.	SECTION	COUNTY	STA. SHEETS	SHEET NO.
1-1 X 97	48-1	CUMBERLAND	12 12	11 SHEETS
FILED DATE FEB 12 1916		DESIGNED BY	FILED NO.	

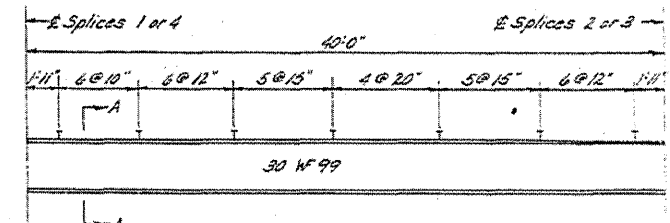
74401



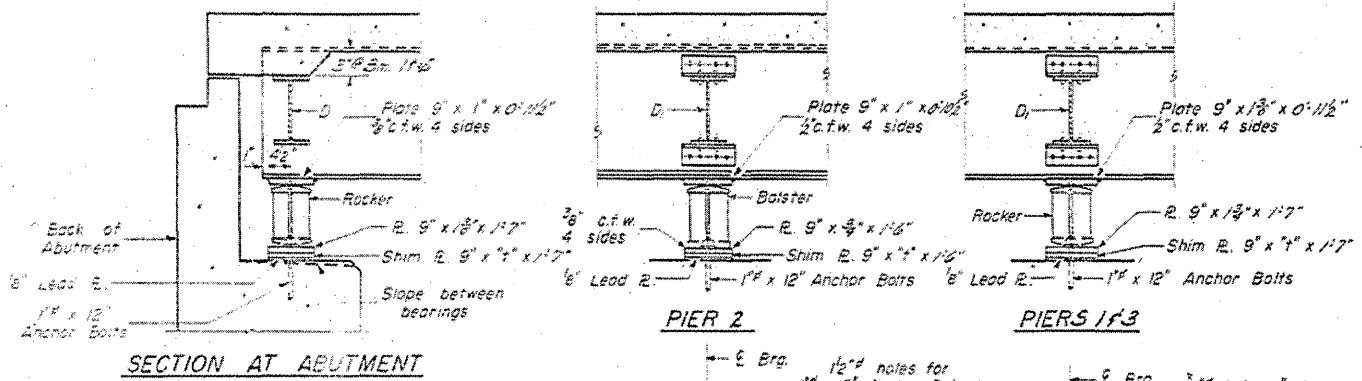
STEEL FRAMING PLAN



SECTION A-A



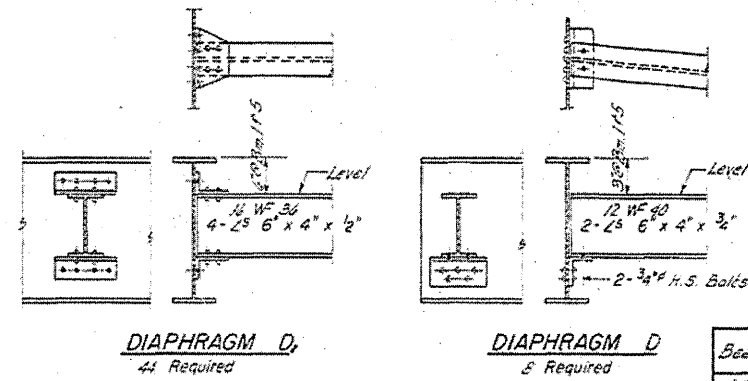
SPACING OF SHEAR CONNECTORS



SECTION AT ABUTMENT

PIER 2

PIERS 1 & 3



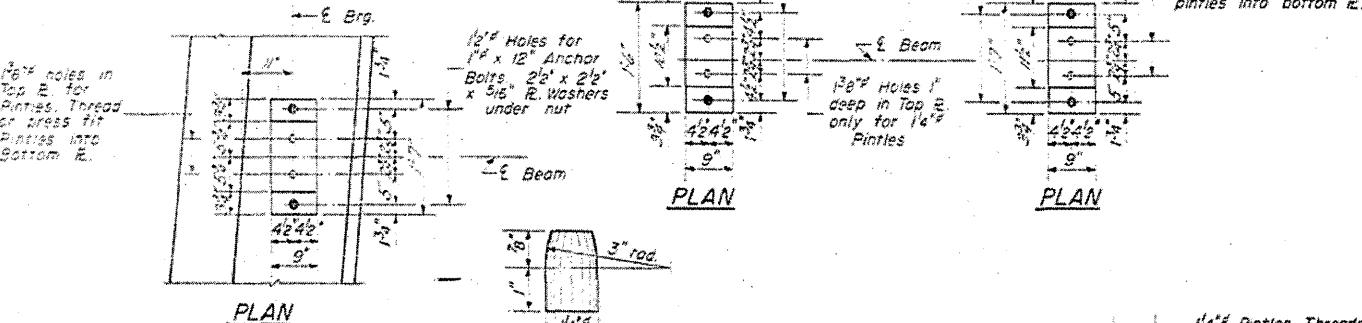
DIAPHRAGM D<sub>1</sub>  
44 Required

DIAPHRAGM D<sub>2</sub>  
8 Required

FABRICATION DIAGRAM  
(All Beams)

ELEVATION TOP OF BEAMS  
(For Fabrication Only)

Beams	E. Brg. W. Abut.	E. Brg. Pier 1	E. Splice 1	E. Splice 2	E. Brg. Pier 2	E. Splice 3	E. Splice 4	E. Brg. Pier 3	E. Brg. E. Abut.
1 & 5	679.89	680.09	680.15	680.24	680.24	680.24	680.24	680.24	680.24
2 & 4	680.00	680.20	680.25	680.35	680.35	680.35	680.26	680.26	680.26
3	680.04	680.24	680.30	680.39	680.39	680.39	680.30	680.24	680.24



PLAN

DETAIL OF PINTLE

DETAIL OF BEARING AT PIERS 1 & ABUTS.  
20 Reqd.

DETAIL OF COVER PLATES

DETAIL OF BEARING AT PIER 2  
5 Reqd.

DETAIL OF SPLICE

TABLE OF "I" DIMENSIONS

Beams	1	2	3	4	5
"I"	0	0	2	0	0

STRUCTURAL STEEL  
FAIRFAX SEC. 15 THIS E  
CUMBERLAND COUNTY  
STA. 6016 + 85.95

LOCATION 3

DESIGNED BY *W. L. Sausaman*  
CHECKED BY *A. T. E.*  
DATE DEC 8 1915  
EXAMINED BY *W. B. Bauman*  
PASSED BY *W. B. Bauman*  
INTRO. BY *W. L. Sausaman*  
INTRO. BY *W. L. Sausaman*

7-2 No. 100 6-3-59