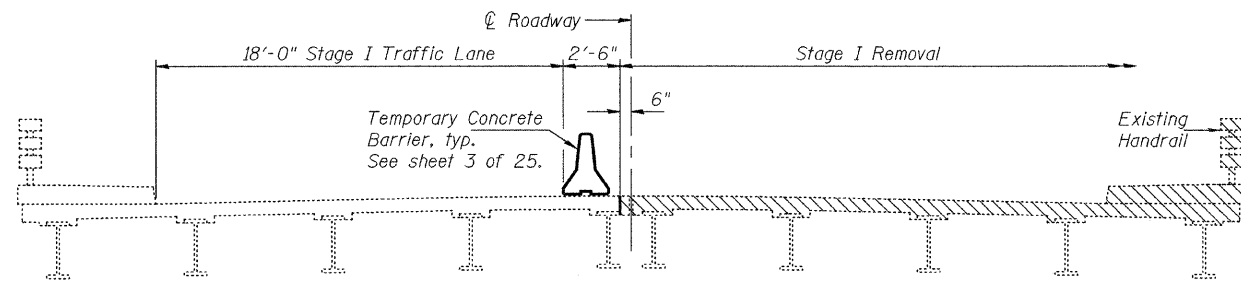


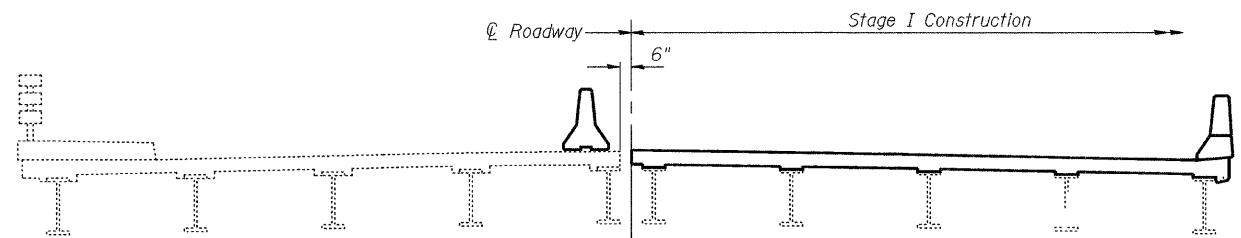
STATE OF ILLINOIS  
DEPARTMENT OF TRANSPORTATION

ROUTE NO.	SECTION	COUNTY	TOTAL SHEETS	SHEET NO.	SHEET NO. 2
F.A.U. 9181	52BR	ST. CLAIR	41	18	25 SHEETS
FED. ROAD DIST. NO. 7	ILLINOIS	FED. AID PROJECT-			

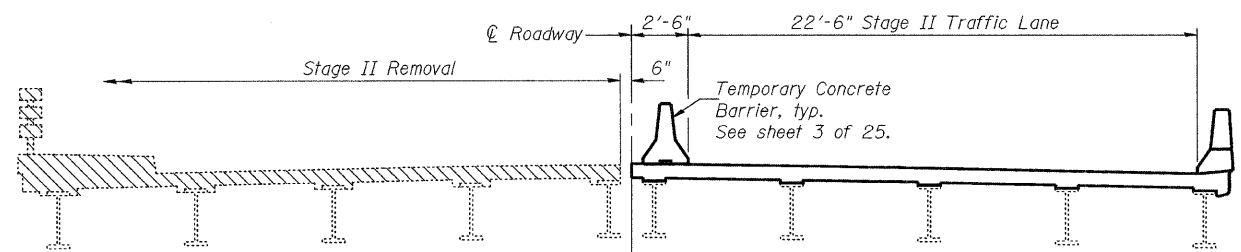
Contract #76120



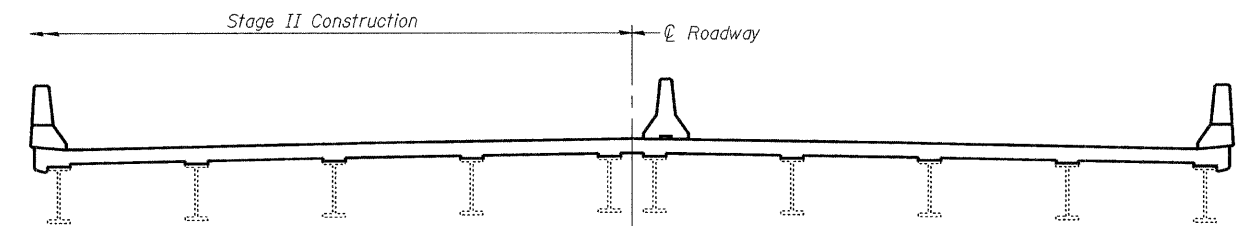
**STAGE I REMOVAL**



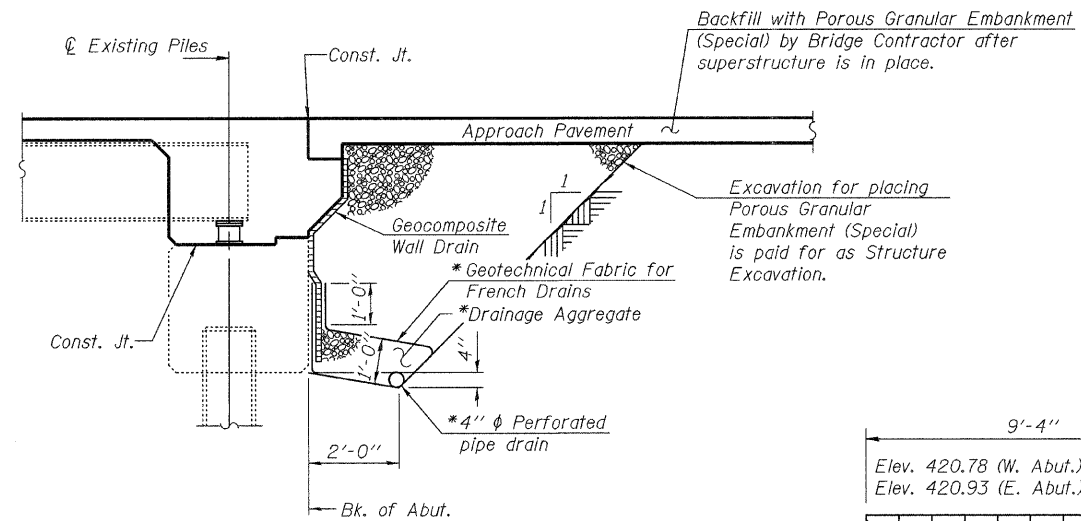
**STAGE I CONSTRUCTION**



**STAGE II REMOVAL**



**STAGE II CONSTRUCTION**



**SECTION THRU INTEGRAL ABUTMENT**

(Horiz. dim. @ Rt. L's)

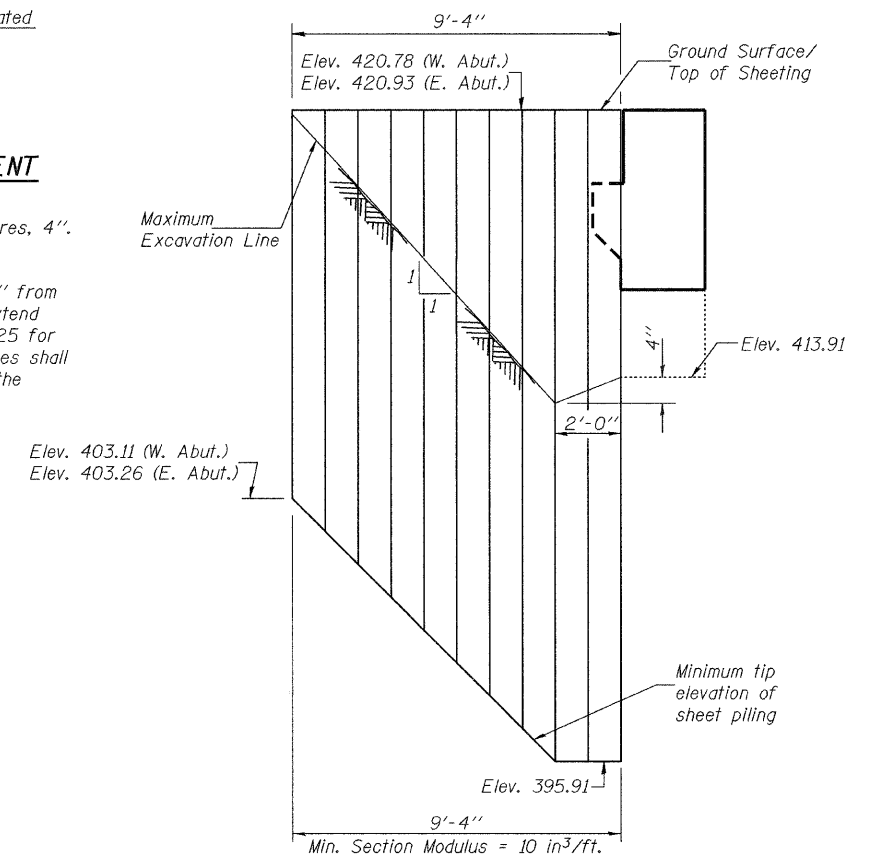
\*Included in the cost of Pipe Underdrains for Structures, 4".

**Note:**

All drainage system components shall extend to 2'-0" from the end of each wingwall except an outlet pipe shall extend until intersecting with the side slopes. See sheet 1 of 25 for length of Pipe Underdrains for Structures, 4". The pipes shall drain into concrete headwalls. (See Article 601.05 of the Standard Specifications and Highway Standard 601101).

**INDEX OF SHEETS**

1. General Plan & Elevation
2. Stage Construction & Temporary Sheet Piling
3. Temporary Concrete Barrier
- 4.-6. Top of Slab Elevations
7. Top of West Approach Slab Elevations
8. Top of East Approach Slab Elevations
9. Superstructure
10. Superstructure Details
- 11.-12. Integral Abutment Diaphragm Details
- 13.-14. Bridge Approach Slab Details
- 15.-16. Structural Steel Details
17. Bearing Details at Abutments
18. Bearing Details at Pier 2
19. Concrete Removal at Abutments
20. Abutments
21. Abutment Details
22. Pier 2
23. Bar Splicer Assembly Details
24. Parapet Silpforming Details
25. Cantilever Forming Brackets



**TEMPORARY SHEET PILING**

If the Contractor chooses to alter the temporary cantilevered sheet piling design requirements shown on the plans, a design submittal including plan details and calculations will be required for review and acceptance by the Engineer. For existing boring data, see existing plans (see roadway plans).

**STAGE CONSTRUCTION &  
TEMPORARY SHEET PILING**  
F.A.U. RTE. 9181 - SECTION 52BR  
ST. CLAIR COUNTY  
STATION 39+89.80  
STRUCTURE NO. 082-0136

DESIGNED	WAB/SMR
CHECKED	DFZ/FT
DRAWN	PAUL W. SWEET
CHECKED	DFZ/SMR/FT

November 23, 2009  
EXAMINED *Thomas J. Demagalaki*  
ENGINEER OF BRIDGE DESIGN  
PASSED *Ralph E. Anderson*  
ENGINEER OF BRIDGES AND STRUCTURES

**Notes:**

All cross sections are looking East.  
Hatched area indicates Removal of Existing Concrete Deck.  
For quantity of Temporary Concrete Barrier, see roadway plans.  
Removal of Existing Handrail is Included with Removal of Existing Concrete Deck.