

STATE OF ILLINOIS
 DEPARTMENT OF TRANSPORTATION
 DIVISION OF HIGHWAYS

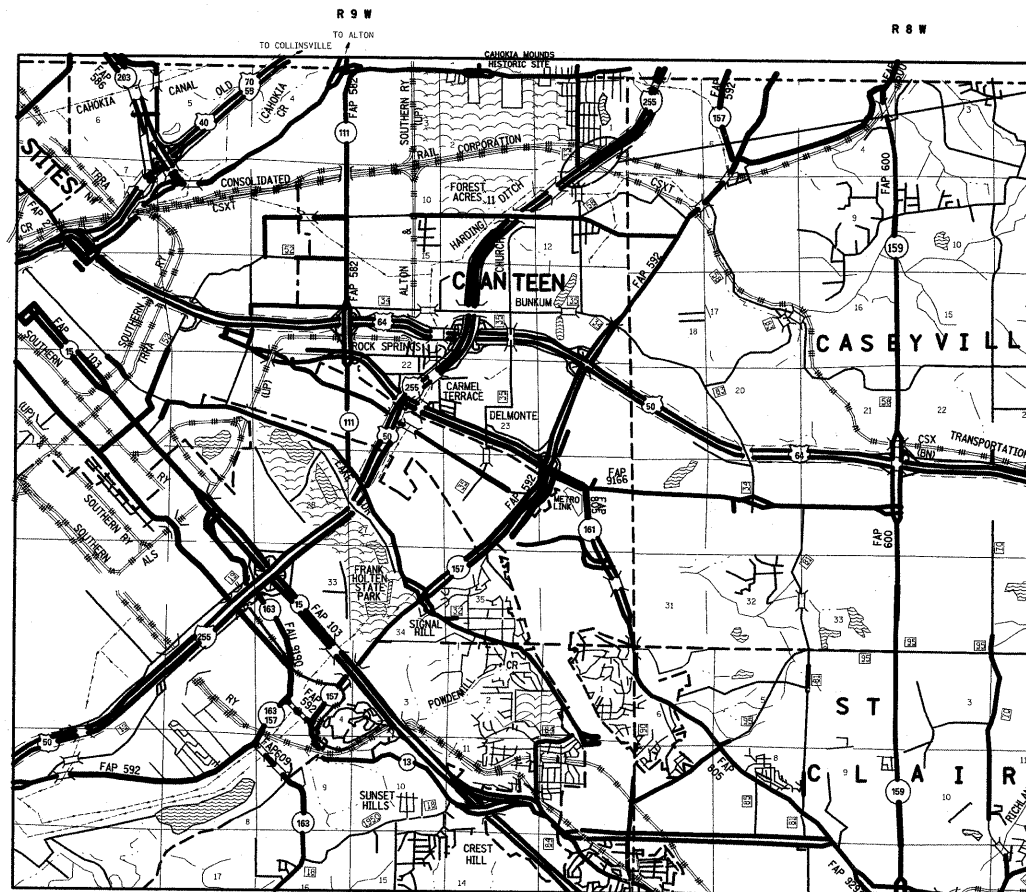
**PROPOSED
 HIGHWAY PLANS**

FAI ROUTE 255
 SECTION 82-1HVB-I-1
 PROJECT NO: IM-255-7 (216) 008
 BRIDGE JOINT REPLACEMENT OVER BLACK LANE AND RAILROADS
 ST CLAIR COUNTY
 C-98-087-05

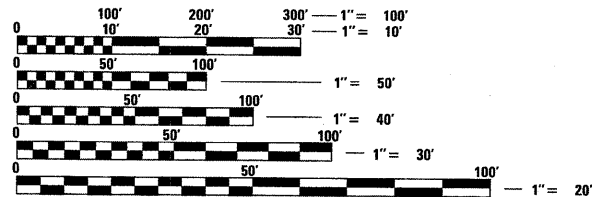
FOR INDEX OF SHEETS, SEE SHEET NO. 2

FAI RTE.	SECTION	COUNTY	TOTAL SHEETS	SHEET NO.
255	82-1HVB-I-1	ST CLAIR	45	1
FED. ROAD DIST. NO.	ILLINOIS	CONTRACT NO. 76926		

D-98-069-05



JOINT REPLACEMENT
 OVER BLACK LANE & RRS
 SN 082-247
 1980'-0" BK TO BK OF ABUTMENTS
 SN 082-0248
 2214'-0" BK TO BK OF ABUTMENTS
 STA 1167+92.63



FULL SIZE PLANS HAVE BEEN PREPARED USING STANDARD ENGINEERING SCALES. REDUCED SIZED PLANS WILL NOT CONFORM TO STANDARD SCALES. IN MAKING MEASUREMENTS ON REDUCED PLANS, THE ABOVE SCALES MAY BE USED.

J.U.L.I.E.
 JOINT UTILITY LOCATION INFORMATION FOR EXCAVATION
 1-800-892-0123
 OR 811

PROJECT ENGINEER: PATTI LEBEAU (618) 346-3179
 PROJECT MANAGER: ART MUEHLFELD (618) 346-3209

CONTRACT NO. 76926

LAYOUT
 0 MI 1 MI 2 MI 3 MI
 1" = 1 MILE
 SN 082-0247 LATITUDE: 38.64378 LONGITUDE: 90.04707
 SN 082-0248 LATITUDE: 38.64362 LONGITUDE: 90.04705

TRAFFIC DATA
 ADT: 48700 (2009)
 59500 (2029)
 SU: 3.1%
 MU: 11.3%

STATE OF ILLINOIS
 DEPARTMENT OF TRANSPORTATION
 DIVISION OF HIGHWAYS

SUBMITTED May 7 2009
Mary C. Janel
 DEPUTY DIRECTOR OF HIGHWAYS, REGION 5
December 4, 2009
Charles G. Ingersoll
 ENGINEER OF DESIGN AND ENVIRONMENT
December 4, 2009
Christine M. Reed
 DIRECTOR OF HIGHWAYS, CHIEF ENGINEER

**PRINTED BY THE AUTHORITY
 OF THE STATE OF ILLINOIS**