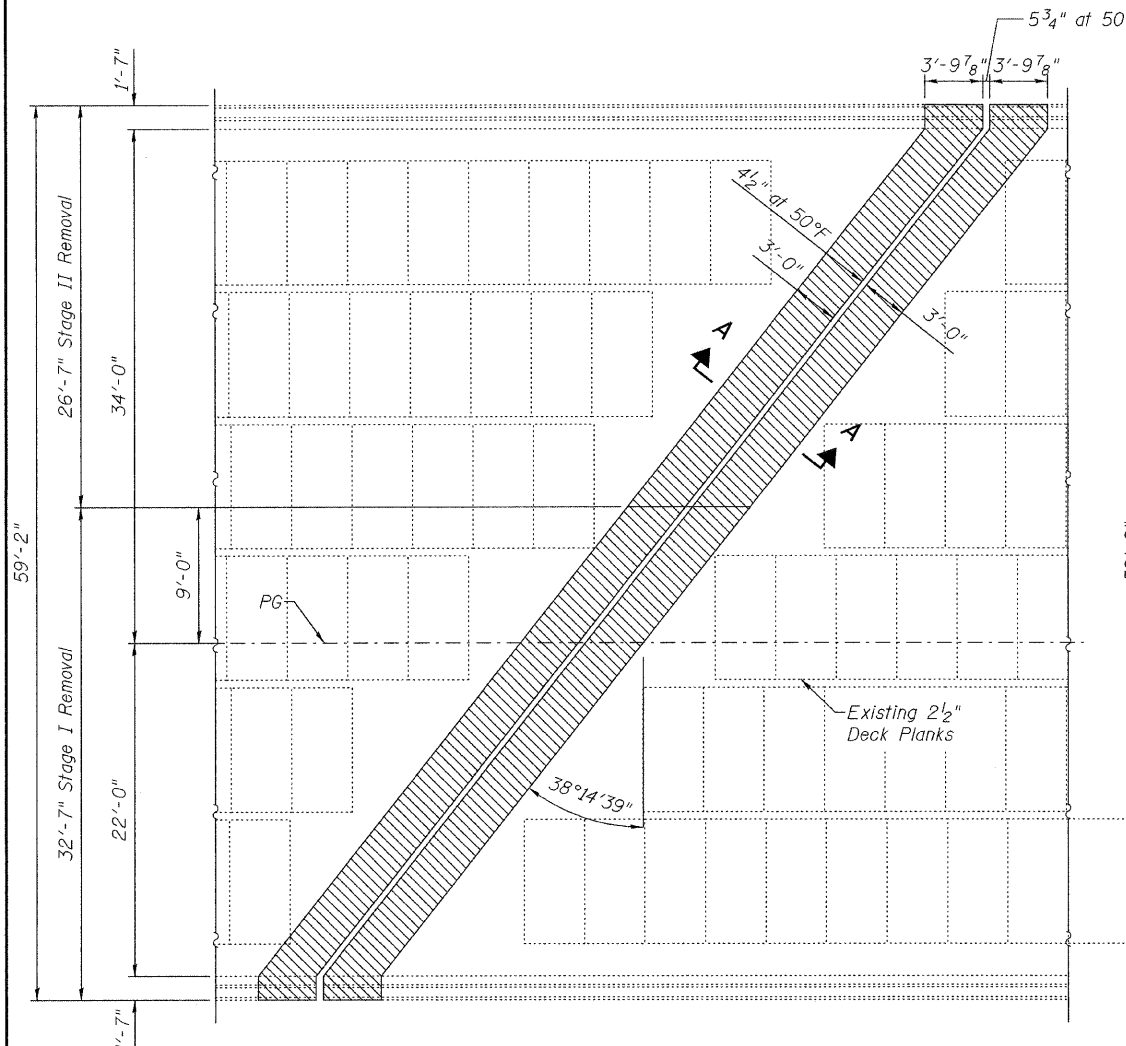
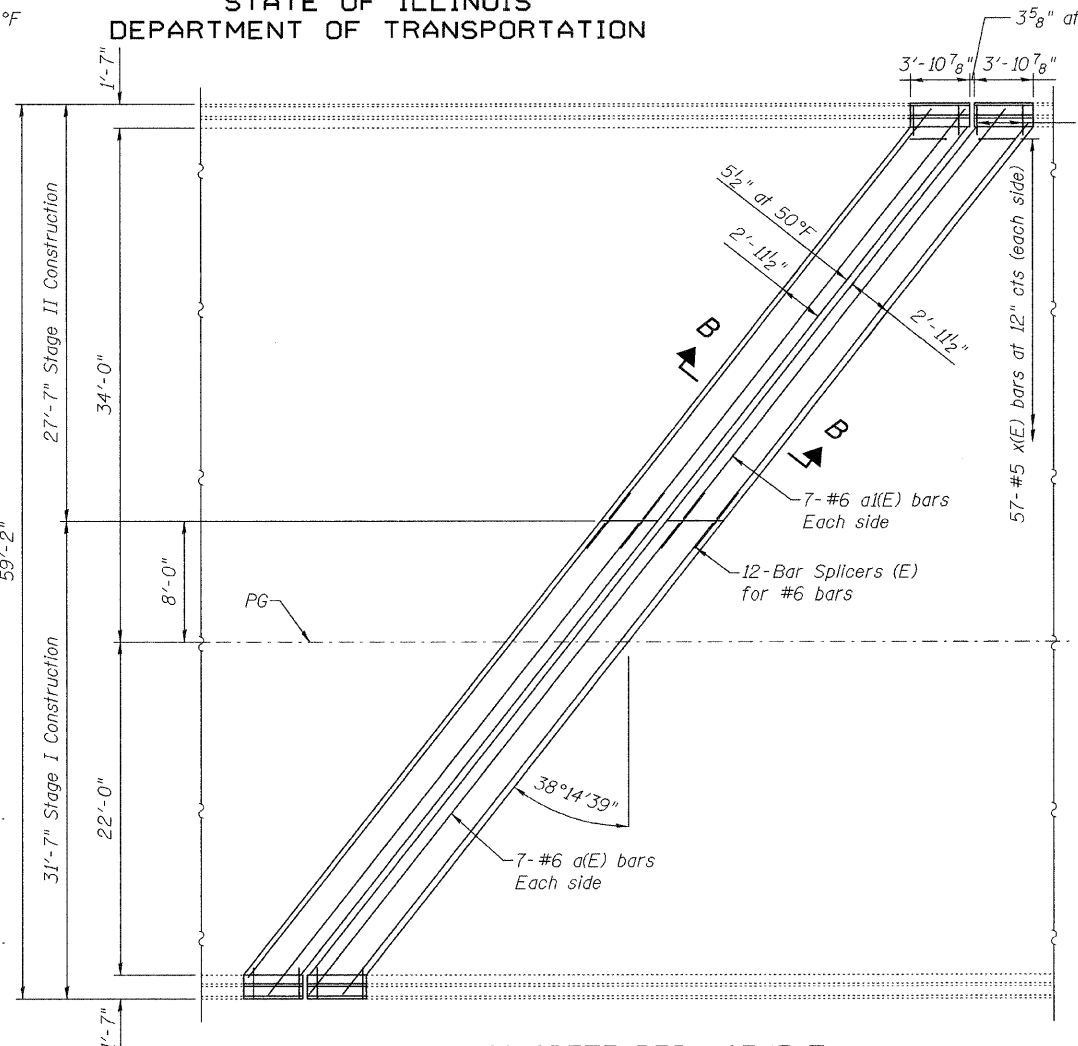


STATE OF ILLINOIS  
DEPARTMENT OF TRANSPORTATION



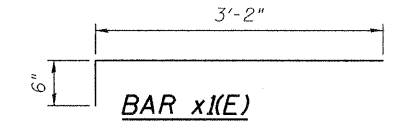
**CONCRETE REMOVAL**

(NB Pier 3 shown)  
(SB Pier 3 similar)



**CONCRETE REPLACEMENT**

(NB Pier 3 shown)  
(SB Pier 3 similar)

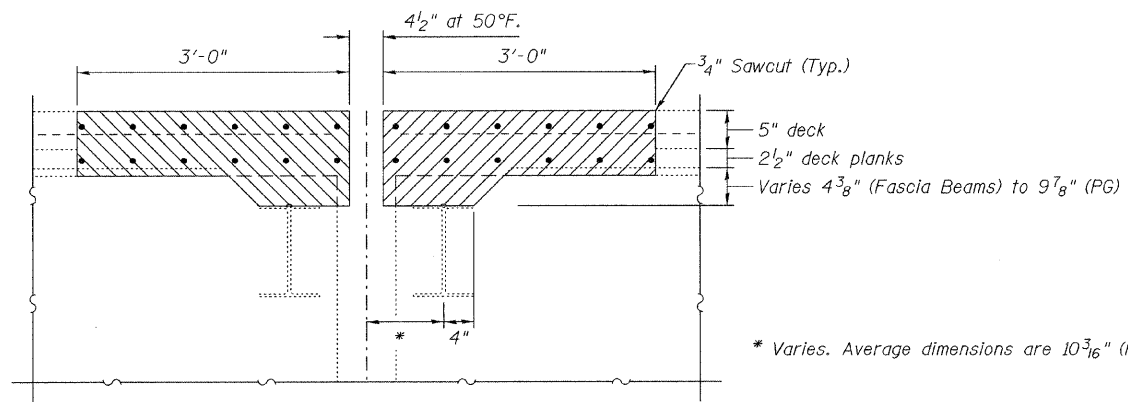


**BOTH PIER 3  
BILL OF MATERIAL**

Bar	No.	Size	Length	Shape
a(E)	14	#6	39'-8"	—
a <sub>1</sub> (E)	14	#6	34'-7"	—
d(E)	20	#4	4'-7"	L
d <sub>1</sub> (E)	20	#5	3'-3"	L
x <sub>1</sub> (E)	114	#5	3'-8"	—
Reinforcement Bars, Epoxy Coated			Pound	2130
Concrete Superstructure			Cu. Yds.	29.3
Concrete Removal			Cu. Yds.	31.8
Finger Plate Expansion Joint, 6"			Foot	142.5

Bars indicated thus 4x2 - #5 etc. indicates 4 line of bars with 2 lengths per line.

See sheet 9 of 20 for Section B-B.



**SECTION A-A**

\* Varies. Average dimensions are 10 3/16" (P3), 11 5/16" (P4 & P8), 10 7/16" (P12) at Rt L's

**PIER 3  
CONCRETE REMOVAL & REPLACEMENT  
082-0247 & 0248**

DESIGNED J. Uehle  
CHECKED A. Holloway  
DRAWN J. Uehle  
CHECKED A. Holloway

NOVEMBER 5, 2009  
EXAMINED *A. Carl Paves*  
ENGINEER OF STRUCTURAL SERVICES  
PASSED *Ralph E. Anderson*  
ENGINEER OF BRIDGES AND STRUCTURES

SHEET NO. 6 20 SHEETS	F.A.I. RTE.	SECTION	COUNTY	TOTAL SHEETS	SHEET NO.
	255	82-1HVB-I-1	ST. CLAIR	45	31
			CONTRACT NO. 76926		
FED. ROAD DIST. NO.		ILLINOIS	FED. AID PROJECT		