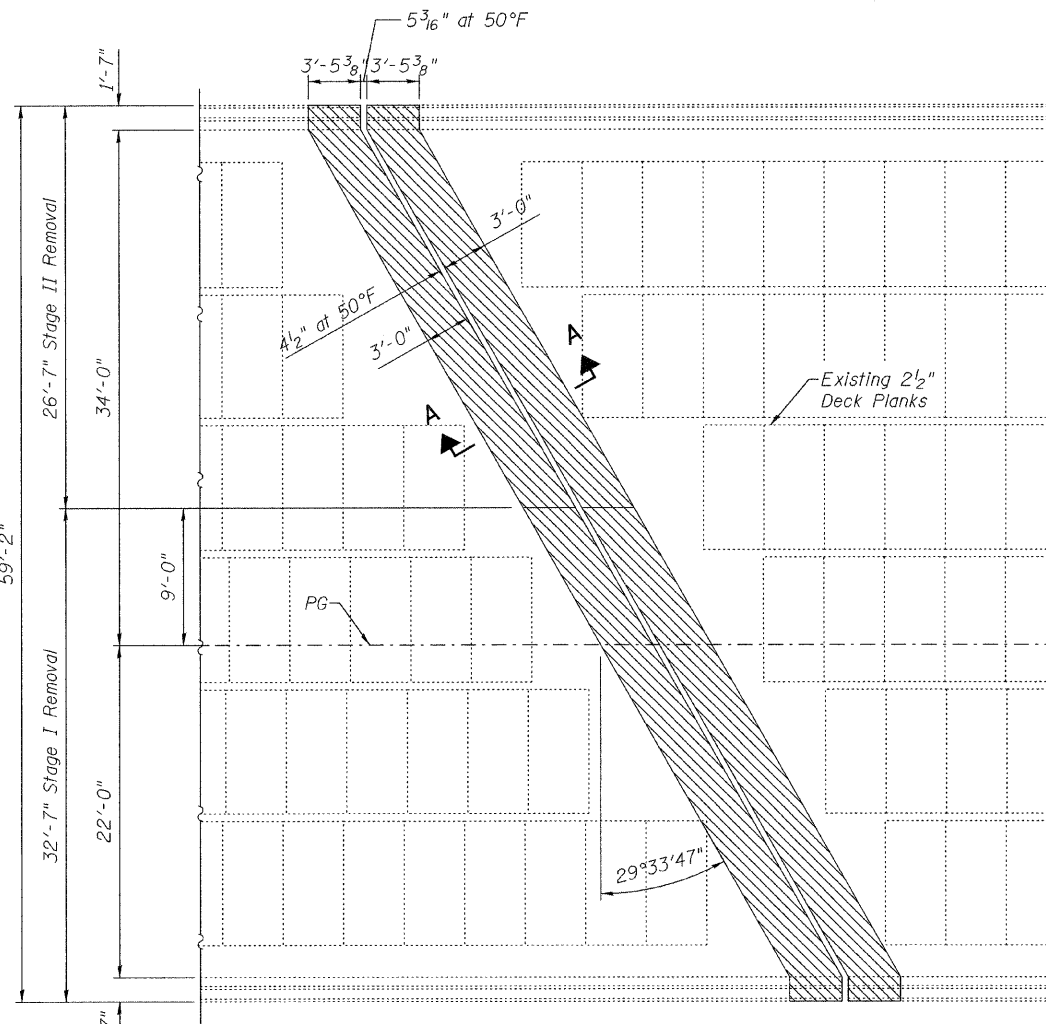
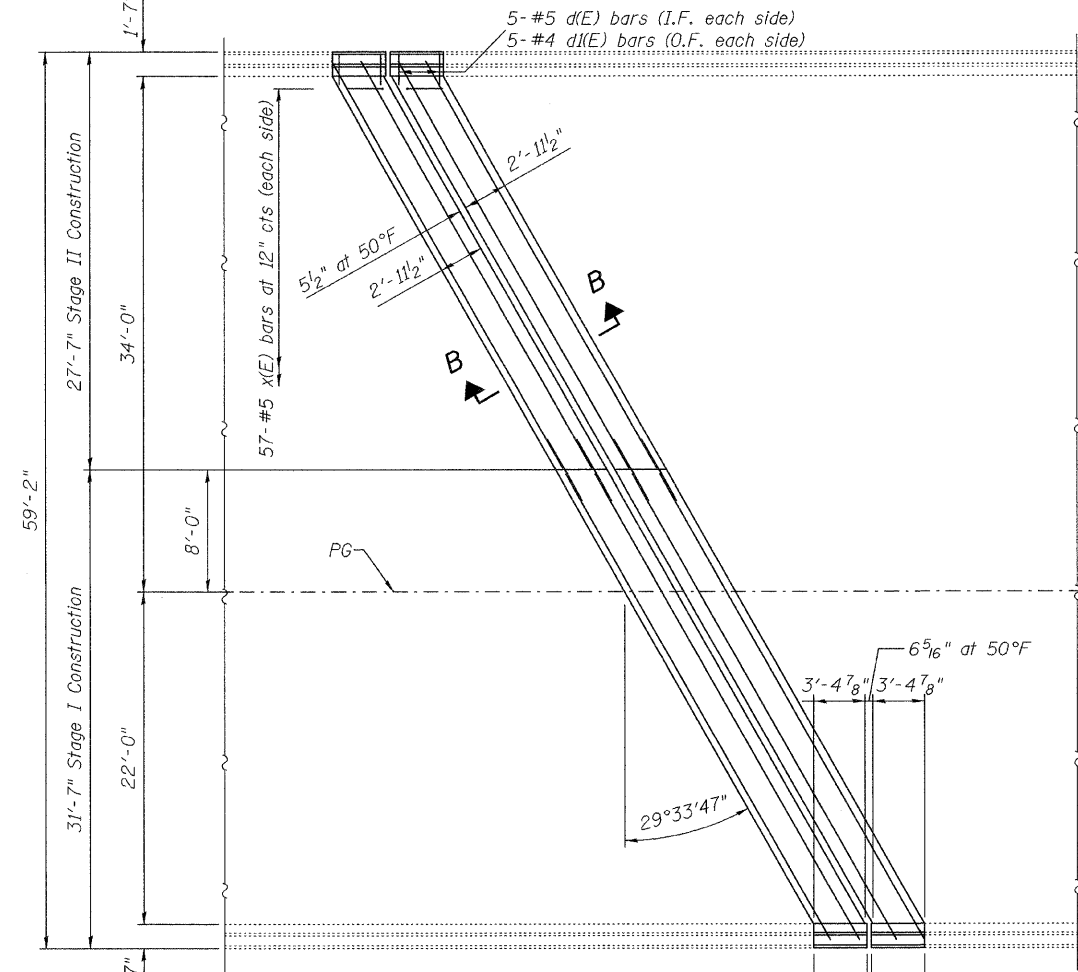


STATE OF ILLINOIS  
DEPARTMENT OF TRANSPORTATION



**CONCRETE REMOVAL**  
(NB Pier 4 & 8 shown)  
(SB Pier 4 & 8 similar)



**CONCRETE REPLACEMENT**  
(NB Pier 4 & 8 shown)  
(SB Pier 4 & 8 similar)

**BOTH PIER 4  
BILL OF MATERIAL**

| Bar                              | No. | Size     | Length | Shape |
|----------------------------------|-----|----------|--------|-------|
| a <sub>2</sub> (E)               | 14  | #6       | 35'-9" | —     |
| a <sub>3</sub> (E)               | 14  | #6       | 31'-2" | —     |
| d(E)                             | 20  | #4       | 4'-7"  | L     |
| d <sub>1</sub> (E)               | 20  | #5       | 3'-3"  | L     |
| x <sub>1</sub> (E)               | 114 | #5       | 3'-8"  | —     |
| Reinforcement Bars, Epoxy Coated |     | Pound    | 1970   |       |
| Concrete Superstructure          |     | Cu. Yds. | 26.8   |       |
| Concrete Removal                 |     | Cu. Yds. | 29.2   |       |
| Finger Plate Expansion Joint, 6" |     | Foot     | 129.0  |       |

**BOTH PIER 8  
BILL OF MATERIAL**

| Bar                              | No. | Size     | Length | Shape |
|----------------------------------|-----|----------|--------|-------|
| a <sub>2</sub> (E)               | 14  | #6       | 35'-9" | —     |
| a <sub>3</sub> (E)               | 14  | #6       | 31'-2" | —     |
| d(E)                             | 20  | #4       | 4'-7"  | L     |
| d <sub>1</sub> (E)               | 20  | #5       | 3'-3"  | L     |
| x <sub>1</sub> (E)               | 114 | #5       | 3'-8"  | —     |
| Reinforcement Bars, Epoxy Coated |     | Pound    | 1970   |       |
| Concrete Superstructure          |     | Cu. Yds. | 26.8   |       |
| Concrete Removal                 |     | Cu. Yds. | 29.2   |       |
| Finger Plate Expansion Joint, 5" |     | Foot     | 129.0  |       |

Bars indicated thus 4x2 - #5 etc. indicates 4 line of bars with 2 lengths per line.

See sheet 6 of 20 for Section A-A.

See sheet 11 & 12 of 20 for Section B-B.

**PIERS 4 & 8  
CONCRETE REMOVAL & REPLACEMENT  
082-0247 & 0248**

|          |            |
|----------|------------|
| DESIGNED | J. Uehle   |
| CHECKED  | A. Hallway |
| DRAWN    | J. Uehle   |
| CHECKED  | A. Hallway |

NOVEMBER 5, 2009  
EXAMINED *A. Carl Poyner*  
ENGINEER OF STRUCTURAL SERVICES  
PASSED *Ralph E. Anderson*  
ENGINEER OF BRIDGES AND STRUCTURES

|                          |             |             |                           |              |           |
|--------------------------|-------------|-------------|---------------------------|--------------|-----------|
| SHEET NO. 7<br>20 SHEETS | F.A.I. RTE. | SECTION     | COUNTY                    | TOTAL SHEETS | SHEET NO. |
|                          | 255         | 82-1HVB-I-1 | ST. CLAIR                 | 45           | 32        |
| FED. ROAD DIST. NO.      |             |             | ILLINOIS FED. AID PROJECT |              |           |
|                          |             |             | CONTRACT NO. 76926        |              |           |