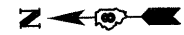


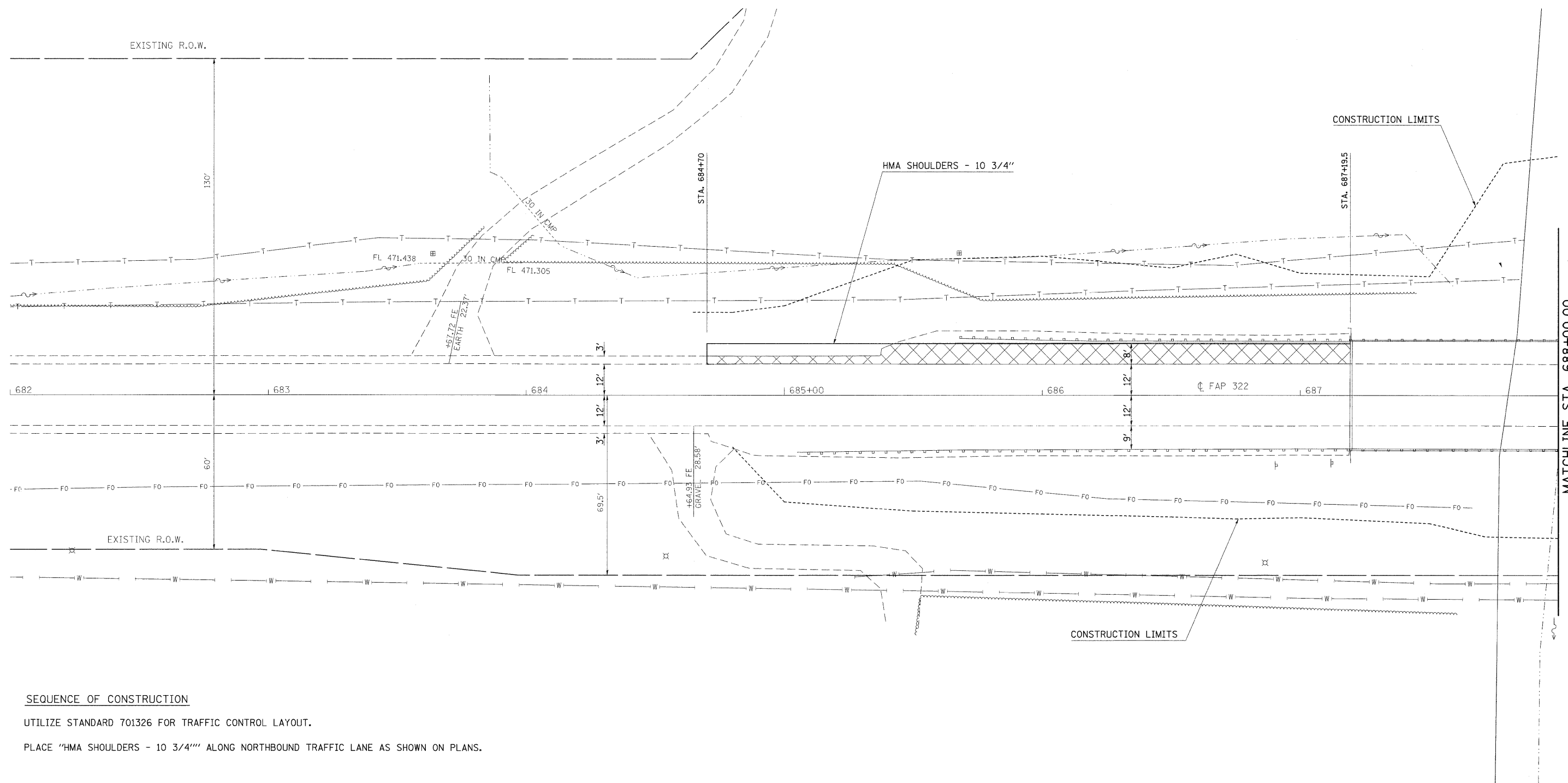


HMA SHOULDER REMOVAL (FULL DEPTH)



DATE	BY
PLAN	
SURVEYED	ALIGNED
NOTE BOOK	RT.O.F. FILE NAME
NO.	

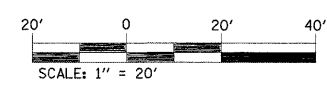
DATE	BY
PROFILE	
SURVEYED	GRADES CHECKED
NOTE BOOK	STRUCTURE NOTATIONS
NO.	CPROD



**SEQUENCE OF CONSTRUCTION**

UTILIZE STANDARD 701326 FOR TRAFFIC CONTROL LAYOUT.

PLACE "HMA SHOULDERS - 10 3/4" ALONG NORTHBOUND TRAFFIC LANE AS SHOWN ON PLANS.



FILE NAME =	USER NAME = harbaughrd	DESIGNED -	REVISED -	<b>STATE OF ILLINOIS DEPARTMENT OF TRANSPORTATION</b>	<b>PRE-STAGE CONSTRUCTION</b>			F.A.P. RTE.	SECTION	COUNTY	TOTAL SHEETS	SHEET NO.	
c:\pwwork\pwwid\harbaughrd\dms52336\stg7026a.dgn		DRAWN -	REVISED -		SCALE: 20	SHEET NO. 1 OF 6 SHEETS	STA. 682+00	TO STA. 688+00	322	25BR-1	MARION	63	14
		CHECKED -	REVISED -		<b>CONTRACT NO. 76A83</b>								
		DATE -	REVISED -		ILLINOIS FED. AID PROJECT								