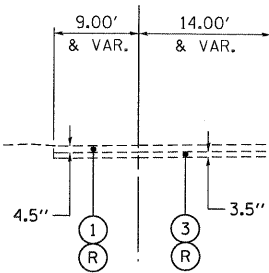
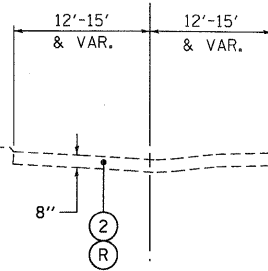


EXCHANGE AVE.



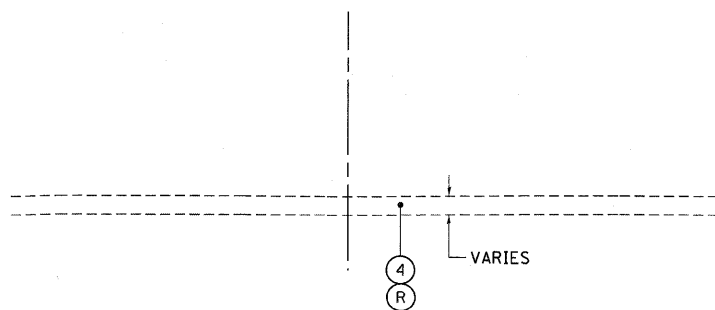
EXISTING TYPICAL SECTION EXCHANGE AVE.
STA. 49+30.33 TO STA. 51+44.77 BITUMINOUS

EXCHANGE AVE.



EXISTING TYPICAL SECTION EXCHANGE AVE.
STA. 51+44.77 TO STA. 62+63.17 CONCRETE

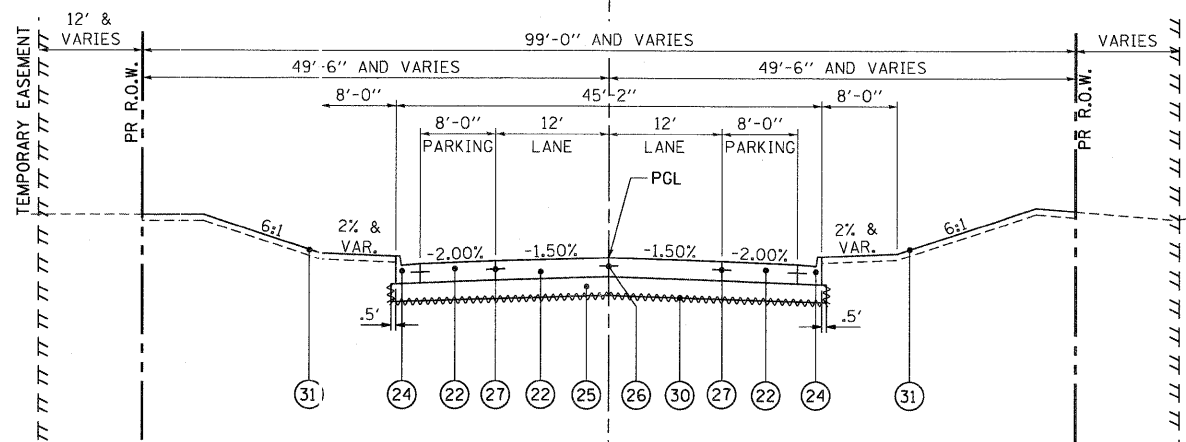
EXCHANGE AVE.



EXISTING TYPICAL SECTION EXCHANGE AVE.
STA. 62+63.17 TO STA. 70+18.48 GRAVEL

GRAVEL REMOVAL SHALL BE PAID FOR AS 'EARTH EXCAVATION'. THE LIMITS ARE DEFINED BY THE EARTH EXCAVATION (SPECIAL) SHOWN ON SHEET 24.

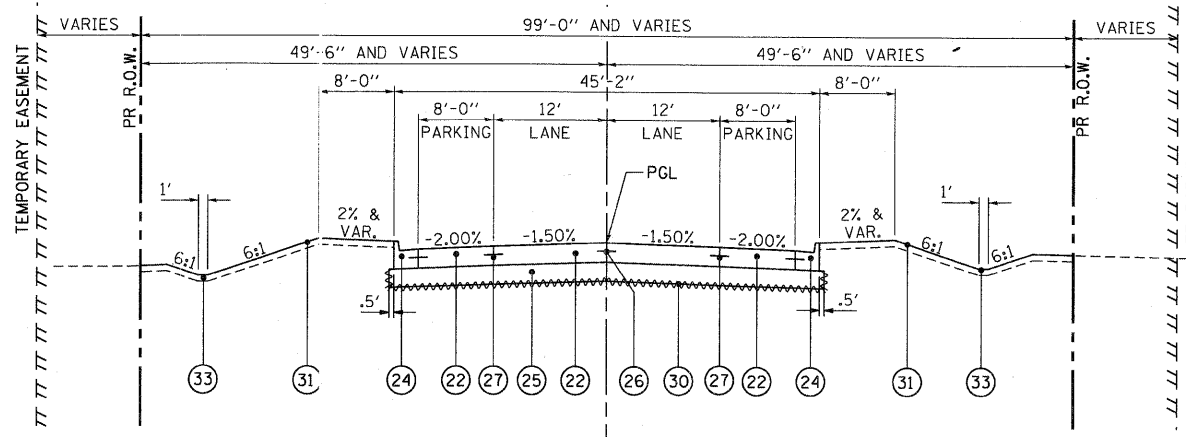
EXCHANGE AVE.



PROPOSED TYPICAL CUT SECTION EXCHANGE AVE.
(LOOKING SOUTH)

ALL LONGITUDINAL JOINTS AND BARS ON EXCHANGE AVE. SHALL BE LONGITUDINAL CONSTRUCTION JOINT WITH NO. 6 TIE BARS @ 24\"/>

EXCHANGE AVE.



PROPOSED TYPICAL FILL SECTION EXCHANGE AVE.
(LOOKING SOUTH)

EXISTING LEGEND

- ① BITUMINOUS CONCRETE PAVEMENT
- ② P.C.C. PAVEMENT
- ③ BRICK PAVEMENT
- ④ GRAVEL SURFACE COURSE
- ⑤ BITUMINOUS OVERLAY
- ⑥ AGGREGATE SHOULDER
- ⑦ CHAIN LINK FENCE
- ⑧ CURB & GUTTER

PROPOSED LEGEND

- ②② PORTLAND CEMENT CONCRETE PAVEMENT 12\"/>
- ②③ POROUS GRANULAR EMBANKMENT, SUBGRADE
- ②④ COMBINATION CONCRETE CURB AND GUTTER, TYPE B-6.24
- ②⑤ AGGREGATE SUBGRADE 12\"/>
- ②⑥ LONGITUDINAL SAWED JOINT WITH NO. 6 TIE BARS @ 30\"/>
- ②⑦ LONGITUDINAL CONSTRUCTION JOINT WITH NO. 6 TIE BARS @ 24\"/>
- ②⑧ HOT-MIX ASPHALT SHOULDERS, 8\"/>
- ②⑨ PIPE UNDERDRAINS 4\"/>
- ③⑦ SWALE
- ③⑧ COMBINATION CONCRETE CURB AND GUTTER, TYPE B-6.12
- ③⑨ HOT-MIX ASPHALT SURFACE COURSE, MIX "D" N70 2.5\"/>
- ③⑩ PORTLAND CEMENT CONCRETE BASE COURSE 10\"/>

Ⓡ ITEM TO BE REMOVED
SEE PLAN FOR LIMITS

▭ = INCIDENTAL ITEMS

~~~~~ GEOTECHNICAL FABRIC FOR GROUND STABILIZATION

\\BCCONN-99-MOTIF.LDN, \\BCCONN-83-BORDER.LDN, \\BCCONN-83-GEOMETRICS.LDN, \\BCCONN-83-LEGEND.LDN, \\BCCONN-83-CIVIL.LDN, \\BCCONN-83-SHT-TYPICAL.LDN  
 12-15-2009, 9:55:49 AM  
 BONDHOLD C:\CIC\WORKSPACE\BONDHOLD\N\F5-0844.D-TRANS.07\2282\2088-981\CIVIL\CONV99 ALL CONTRACTS\CONNSHEETS CONTRACT 83\BCCONN-83-SHT-TYPICAL.LDN

|                    |                    |                 |           |                                                                               |                                             |           |           |             |         |                     |                           |                    |
|--------------------|--------------------|-----------------|-----------|-------------------------------------------------------------------------------|---------------------------------------------|-----------|-----------|-------------|---------|---------------------|---------------------------|--------------------|
| FILE NAME = #FILE# | USER NAME = #USER# | DESIGNED - JB   | REVISED - | <b>STATE OF ILLINOIS<br/>DEPARTMENT OF TRANSPORTATION<br/>I-70 CONNECTION</b> | <b>EXCHANGE AVENUE<br/>TYPICAL SECTIONS</b> |           |           | F.A.P. RTE. | SECTION | COUNTY              | TOTAL SHEETS              | SHEET NO.          |
|                    |                    | DRAWN - JB      | REVISED - |                                                                               |                                             |           |           | 9153        | 82-1K   | ST. CLAIR           | 107                       | 7                  |
|                    |                    | CHECKED - ACL   | REVISED - |                                                                               | SCALE: N.T.S.                               | SHEET NO. | OF SHEETS | STA.        | TO STA. | FED. ROAD DIST. NO. | ILLINOIS FED. AID PROJECT | CONTRACT NO. 76C40 |
|                    |                    | DATE - 10/09/09 | REVISED - |                                                                               |                                             |           |           |             |         |                     |                           |                    |

