

IMPROVEMENT LIMITS  
EXCHANGE AVENUE  
STA. 49+30.36

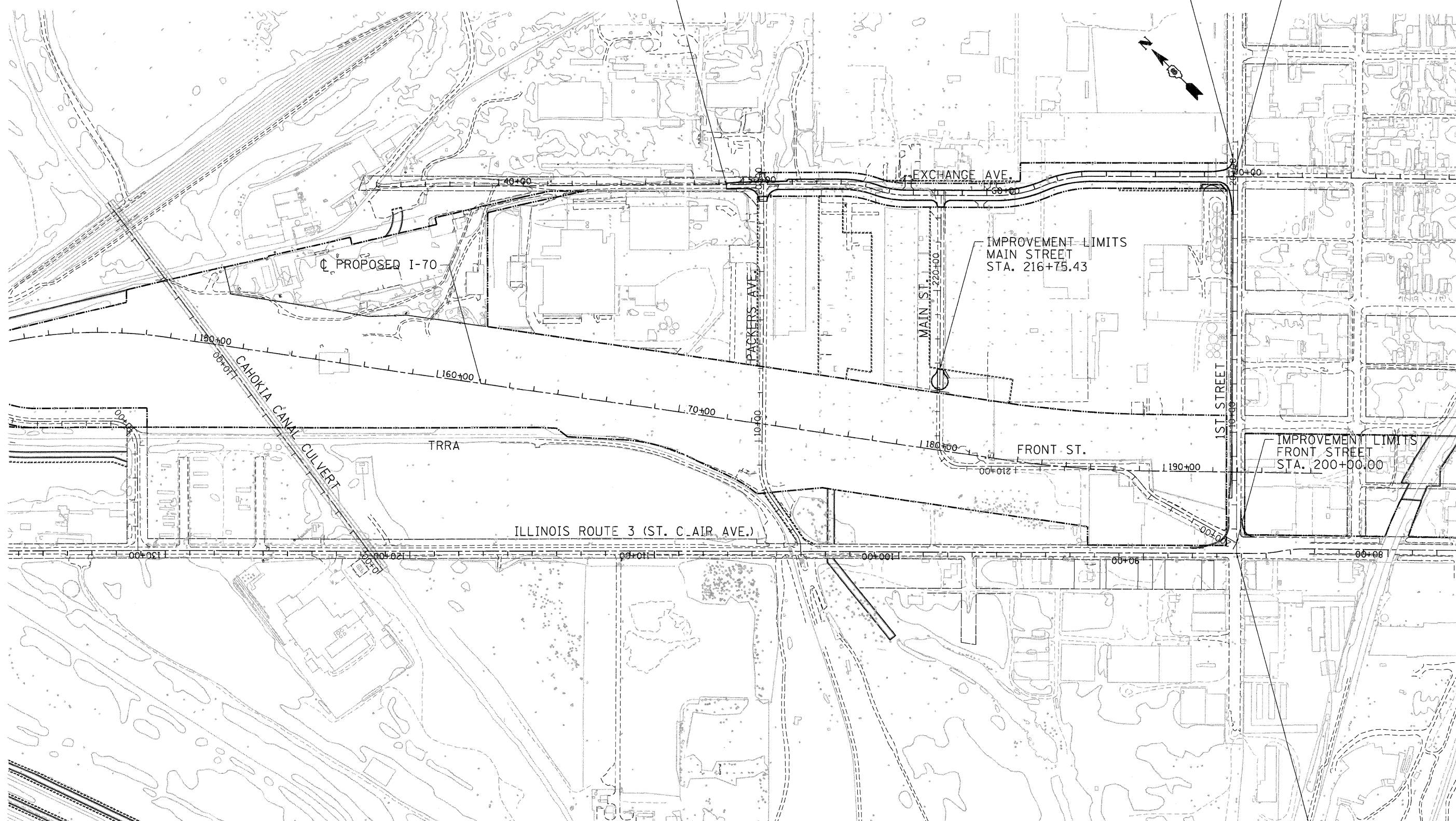
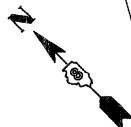
IMPROVEMENT LIMITS  
1ST STREET  
STA. 21+31.97

IMPROVEMENT LIMITS  
EXCHANGE AVENUE  
STA. 70+18.19

IMPROVEMENT LIMITS  
MAIN STREET  
STA. 216+75.43

IMPROVEMENT LIMITS  
FRONT STREET  
STA. 200+00.00

IMPROVEMENT LIMITS  
1ST STREET  
STA. 5+19.81



.\\BDCONN-99-MOTIF.LDN, .\\BDCONN-99-LAYOUT.LDN, .\\BDCONN-99-ALIGNMENT2.DGN, .\\BDCONN-93-GEOMETRICS.DGN, .\\BDCONN-93-TPO.DGN  
 10/14/2009 11:16:17 AM  
 BONDHLD C:\C-WORKSPACE\BONDHLD\N-FS-0814.D-TRANS.07\2002\29868-80\1\CIVIL\CD\019 ALL CONTRAC'S\CD\NSHETS CONTRACT 05\BDCONN-93-SH-ALIGNMENT.DGN

<b>TENG</b> TENG & ASSOCIATES, INC. ENGINEERS/ARCHITECTS/PLANNERS CHICAGO, ILLINOIS	USER NAME = #USER# DESIGNED - JB DRAWN - JB CHECKED - ACL DATE - 10/09/09	REVISED - REVISED - REVISED - REVISED -	<b>STATE OF ILLINOIS</b> <b>DEPARTMENT OF TRANSPORTATION</b> I-70 CONNECTION		<b>OVERALL PROJECT LIMITS</b>		F.A.P. RTE. 9153	SECTION 82-1K	COUNTY ST. CLAIR	TOTAL SHEETS 107	SHEET NO. 20
	FILE NAME # #FILE#* PLOT SCALE = #SCALE# PLOT DATE = #DATE#	SCALE: 1"=200' SHEET NO. OF SHEETS STA. TO STA.	CONTRACT NO. 76C40		FED. ROAD DIST. NO. ILLINOIS FED. AID PROJECT						