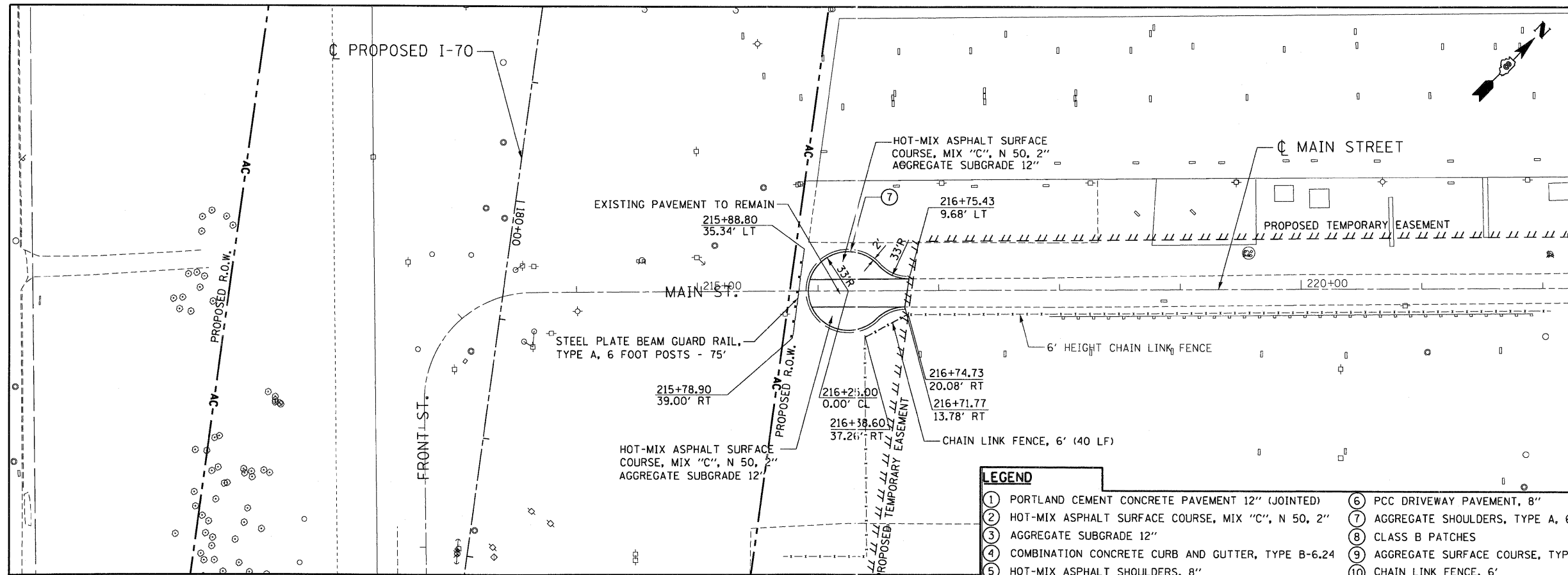


PLAN	SURVEYED	BY	DATE
	PLOTTED		
	CHECKED		
	RT. OF WAY		
	CHECKED		
	NO.		
	PAID FILE NAME		

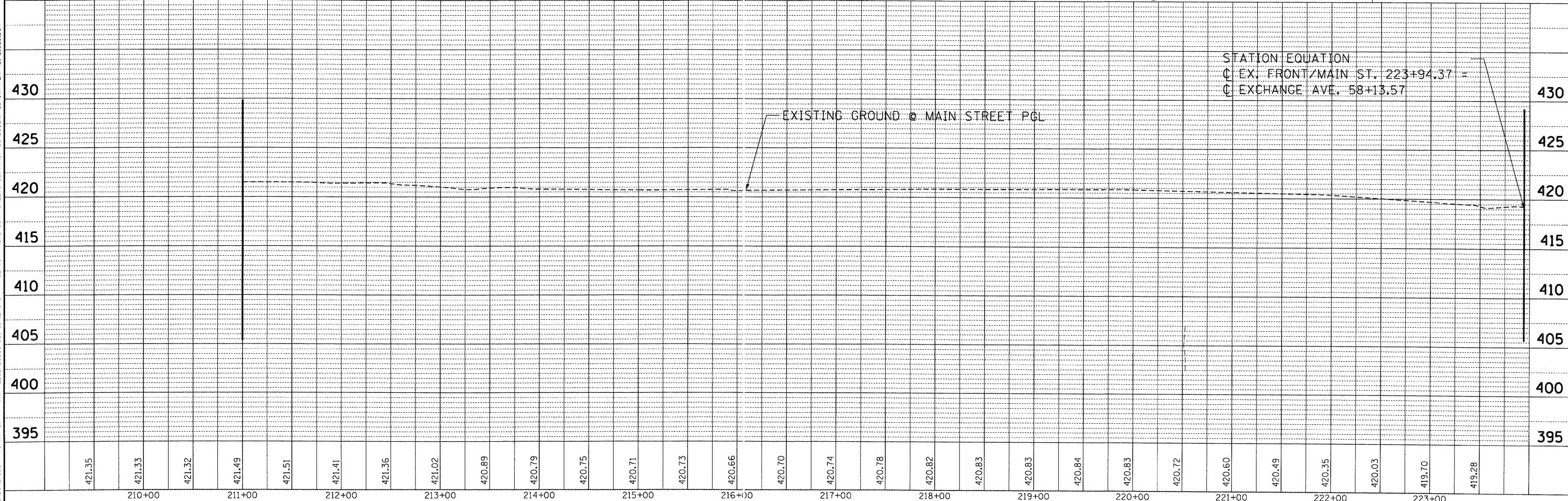
PROFILE	SURVEYED	BY	DATE
	PLOTTED		
	CHECKED		
	RT. OF WAY		
	CHECKED		
	NO.		
	STRUCTURE NOTATIONS		
	CHD		

10-14-2009 16:17:41 BONDHJJD
 C:\IC-WORKSPACE\BONDHJJD\M-FS-0944\TRANS.07\2292\28868-001\CIVIL\CAO\99 ALL CONTRACTS\CONV SHEETS CONTRACT 03\DECENN-02-SHT-PLN\PROJ-21500.DGN



LEGEND

① PORTLAND CEMENT CONCRETE PAVEMENT 12" (JOINTED)	⑥ PCC DRIVEWAY PAVEMENT, 8"
② HOT-MIX ASPHALT SURFACE COURSE, MIX "C", N 50, 2"	⑦ AGGREGATE SHOULDERS, TYPE A, 6"
③ AGGREGATE SUBGRADE 12"	⑧ CLASS B PATCHES
④ COMBINATION CONCRETE CURB AND GUTTER, TYPE B-6.24	⑨ AGGREGATE SURFACE COURSE, TYPE B, 8"
⑤ HOT-MIX ASPHALT SHOULDERS, 8"	⑩ CHAIN LINK FENCE, 6'



FILE NAME =	USER NAME = #USER#	DESIGNED - JB	REVISED -	STATE OF ILLINOIS DEPARTMENT OF TRANSPORTATION I-70 CONNECTION	PROPOSED ROADWAY PLAN & PROFILE MAIN STREET STA. 211 + 00 TO STA. 223 + 94	F.A.P. R.T.E. 9153	SECTION 82-1K	COUNTY ST. CLAIR	TOTAL SHEETS 107	SHEET NO. 28	
#FILEL#	PLLOT SCALE = #SCALE#	DRAWN - JB	REVISED -			SCALE: HORIZ. 1"=50'	VERT. 1"=5'	STA.	TO STA.	FED. ROAD DIST. NO.	ILLINOIS FED. AID PROJECT
	PLLOT DATE = #DATE#	CHECKED - ACL	REVISED -								
		DATE - 10/09/09	REVISED -								



TENG & ASSOCIATES, INC.
 ENGINEERS ARCHITECTS-PLANNERS
 CHICAGO, ILLINOIS