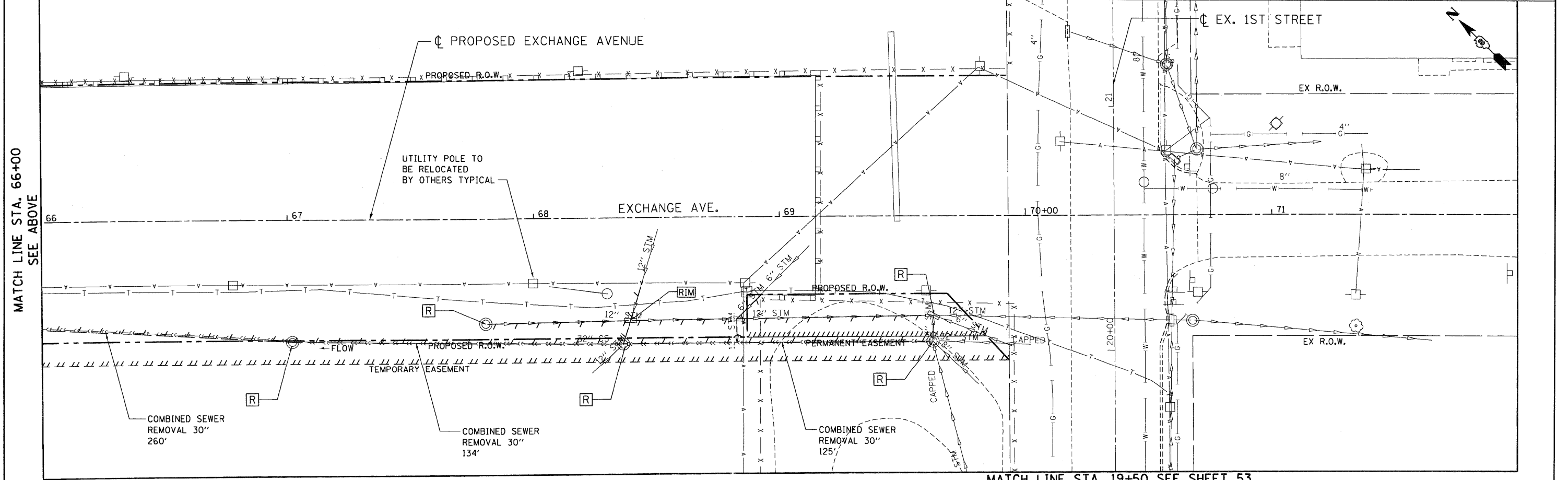
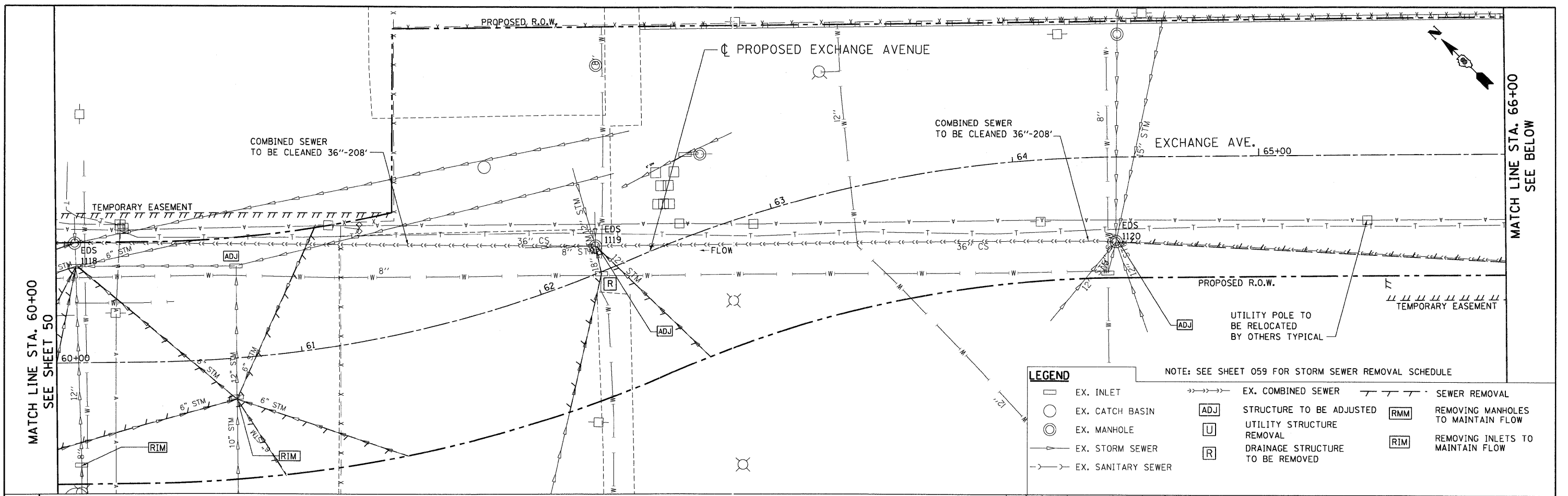


FILE NAME = USER NAME = #USER# DESIGNED - MMCG REVISED -
 #FILE# DRAWN - JFS REVISED -
 PLOT SCALE = #SCALE# CHECKED - DDH REVISED -
 PLOT DATE = #DATE# DATE - 10/09/09 REVISED -



LEGEND

- EX. INLET
- EX. CATCH BASIN
- ⊙ EX. MANHOLE
- EX. STORM SEWER
- - - EX. SANITARY SEWER
- EX. COMBINED SEWER
- ADJ STRUCTURE TO BE ADJUSTED
- U UTILITY STRUCTURE REMOVAL
- R DRAINAGE STRUCTURE TO BE REMOVED
- SEWER REMOVAL
- RMM REMOVING MANHOLES TO MAINTAIN FLOW
- RIM REMOVING INLETS TO MAINTAIN FLOW

NOTE: SEE SHEET 059 FOR STORM SEWER REMOVAL SCHEDULE

TENG TENG & ASSOCIATES, INC. ENGINEERS/ARCHITECTS/PLANNERS CHICAGO, ILLINOIS		STATE OF ILLINOIS DEPARTMENT OF TRANSPORTATION I-70 CONNECTION			EXISTING DRAINAGE & UTILITIES EXCHANGE AVE STA. 60+00.00 TO 1ST STREET			F.A.P. RTE. 9153		SECTION 82-1K	COUNTY ST. CLAIR	TOTAL SHEETS 107	SHEET NO. 51
		SCALE: 1"=20' SHEET NO. OF SHEETS STA. TO STA.		CONTRACT NO. 76C40		FED. ROAD DIST. NO. ILLINOIS FED. AID PROJECT							