

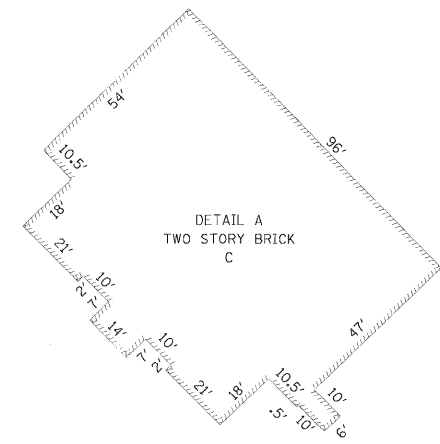
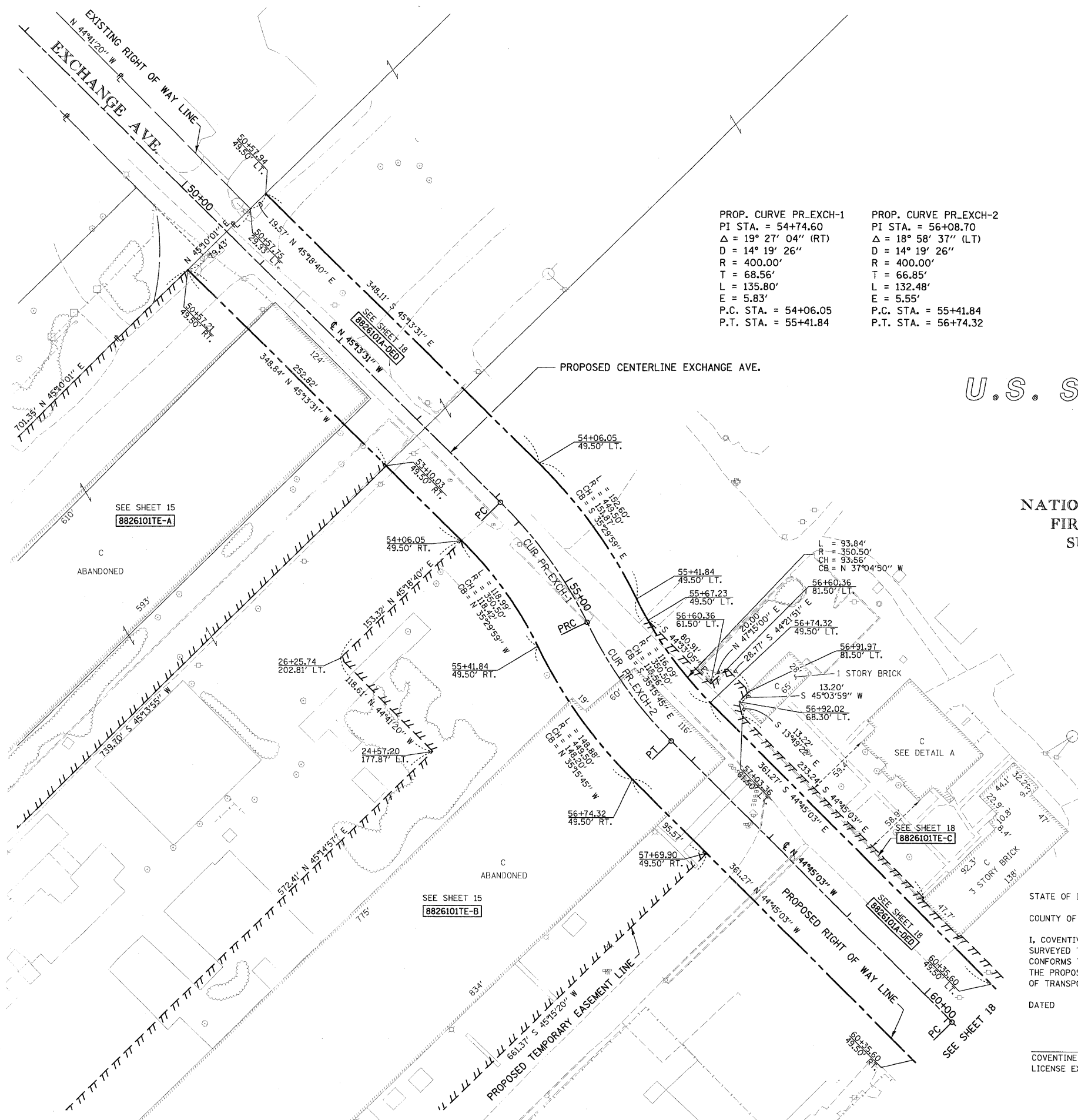
PART OF U.S. SURVEY 627, T2N, R10W, OF THE 3RD PM, ST. CLAIR COUNTY, ILLINOIS

SEE COORDINATE LIST AND BASIS OF COORDINATES AND BEARINGS STATEMENT ON SHEET 2

BEARINGS SHOWN HEREON ARE BASED ON THE MISSISSIPPI RIVER CROSSING (MRC) COORDINATE SYSTEM WHICH IS A MODIFIED UNIVERSAL TRANSVERSE MERCATOR (UTM) SYSTEM, ZONE 15 NORTH.



SPACE RESERVED FOR RECORDING OFFICER



PROP. CURVE PR_EXCH-1
 PI STA. = 54+74.60
 $\Delta = 19^\circ 27' 04''$ (RT)
 $D = 14^\circ 19' 26''$
 $R = 400.00'$
 $T = 68.56'$
 $L = 135.80'$
 $E = 5.83'$
 P.C. STA. = 54+06.05
 P.T. STA. = 55+41.84

PROP. CURVE PR_EXCH-2
 PI STA. = 56+08.70
 $\Delta = 18^\circ 58' 37''$ (LT)
 $D = 14^\circ 19' 26''$
 $R = 400.00'$
 $T = 66.85'$
 $L = 132.48'$
 $E = 5.55'$
 P.C. STA. = 55+41.84
 P.T. STA. = 56+74.32

U.S. SURVEY 627

LOT A
 NATIONAL STOCK YARDS
 FIRST DIVISION OF
 SURVEY NO. 627
 (P.B.E, PG. 14)

NOTE: EXISTING R.O.W. OF EXCHANGE AVE. ESTABLISHED PER PB E, PG. 14

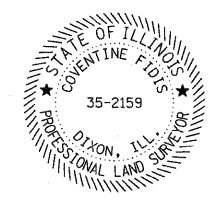
AMERICAN
 SURVEYING & ENGINEERING, P.C.
 841 N. Galena Ave, Dixon, IL 61021
 815-288-6231
 ILLINOIS PROFESSIONAL DESIGN
 FIRM NO. 184-003192 101046/97258

STATE OF ILLINOIS)
 COUNTY OF) SS

I, COVENTINE FIDIS, AN ILLINOIS PROFESSIONAL LAND SURVEYOR, STATE THAT I HAVE SURVEYED THE PLAT OF HIGHWAY SHOWN HEREON AND THAT THIS PROFESSIONAL SERVICE CONFORMS TO THE CURRENT ILLINOIS MINIMUM STANDARDS FOR A BOUNDARY SURVEY FOR THE PROPOSED PARCEL(S) TO BE ACQUIRED BY THE STATE OF ILLINOIS, DEPARTMENT OF TRANSPORTATION, SHOWN HEREON.

DATED

COVENTINE FIDIS, PLS NO. 35-2159
 LICENSE EXPIRATION DATE: 11/30/2010



ILLINOIS DEPARTMENT OF TRANSPORTATION				
PLAT OF HIGHWAYS				
FAP ROUTE 998				
SECTION 82-1K				
ST. CLAIR COUNTY				
JOB NO. R-98-026-08				
STATION 21+00 TO STATION 30+00				
SCALE: 1" = 50'				
SHEET 17 OF				
ILLINOIS DEPARTMENT OF TRANSPORTATION				
DIVISION OF HIGHWAYS/REGION 5/DISTRICT 8				
1102 EASTPORT PLAZA DRIVE				
COLLINSVILLE, ILLINOIS 62234-6198				
F.A. RTE.	SECTION	COUNTY	TOTAL SHEETS	SHEET NO.
			107	77
COMPLETION DATE OF FIELD WORK PERFORMED			CONTRACT NO.	
LAND SURVEY:	ROW STAKING:			
FED. ROAD DIST. NO.		ILLINOIS FED. AID PROJECT		