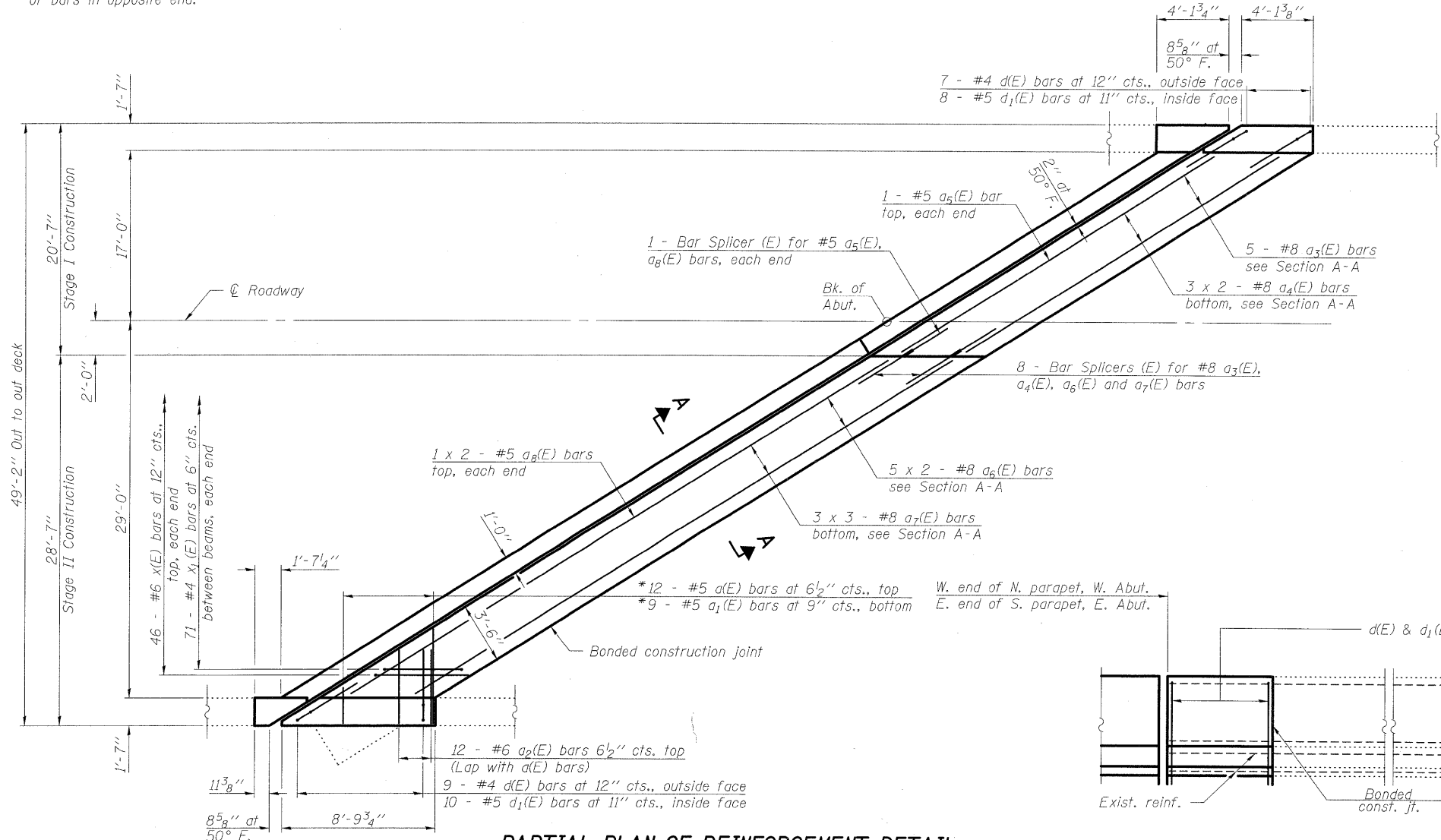
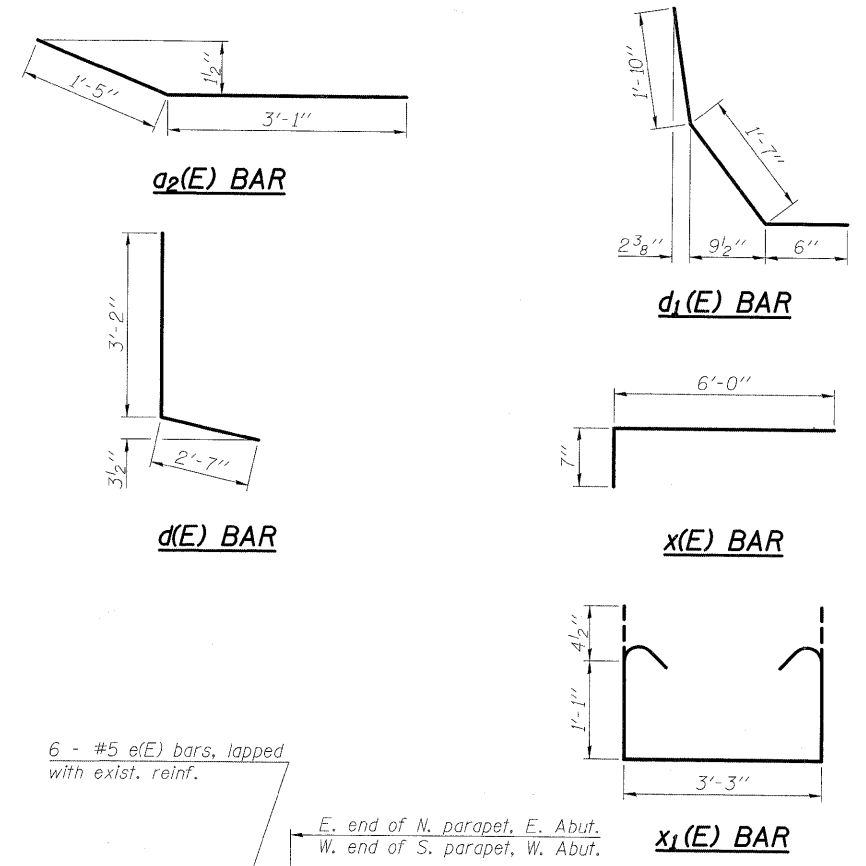


* Order a(E) & a₁(E) bars full length.
Cut to fit skew and use remainder
of bars in opposite end.

STATE OF ILLINOIS
DEPARTMENT OF TRANSPORTATION



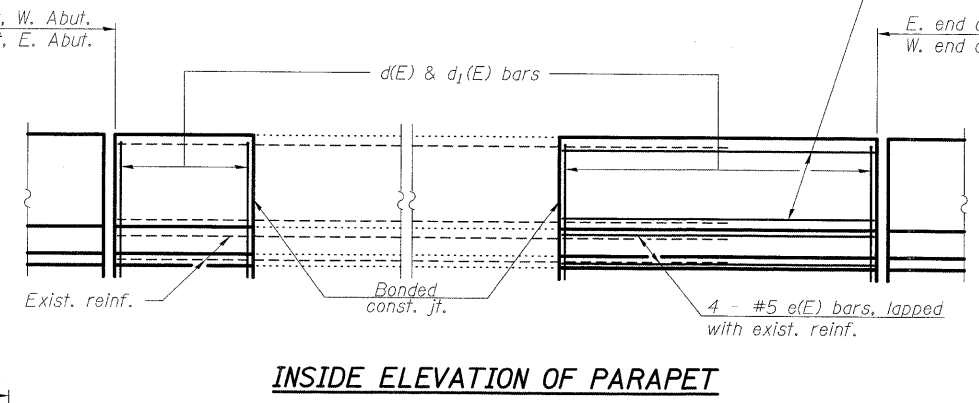
PARTIAL PLAN OF REINFORCEMENT DETAIL



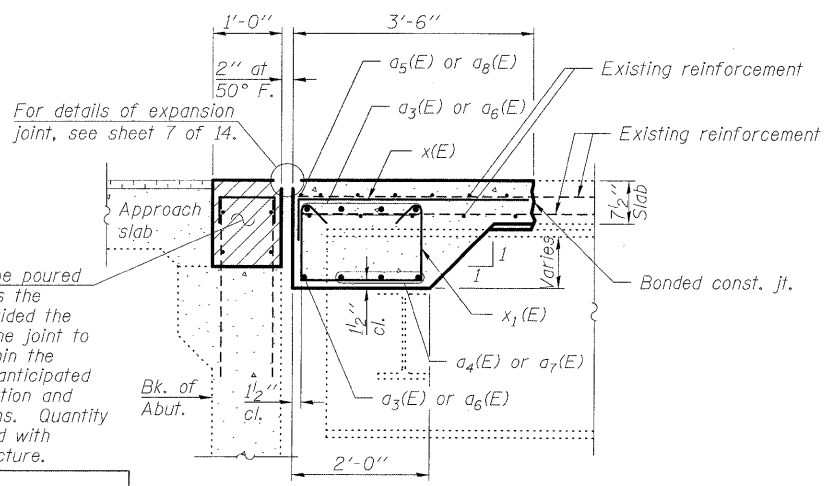
**SUPERSTRUCTURE
BILL OF MATERIAL
TWO STRUCTURES**

Bar	No.	Size	Length	Shape
a(E)	24	#5	6'-6"	—
a ₁ (E)	18	#5	6'-5"	—
a ₂ (E)	48	#6	4'-6"	—
a ₃ (E)	20	#8	3'-8"	—
a ₄ (E)	24	#8	18'-10"	—
a ₅ (E)	4	#5	37'-8"	—
a ₆ (E)	40	#8	28'-3"	—
a ₇ (E)	36	#8	19'-9"	—
a ₈ (E)	8	#5	28'-0"	—
d(E)	64	#4	5'-9"	—
d ₁ (E)	72	#5	3'-11"	—
e(E)	40	#5	6'-3"	—
x(E)	184	#6	6'-7"	—
x ₁ (E)	284	#4	6'-2"	—
Concrete Removal			Cu. Yds.	88.2
Reinforcement Bars, Epoxy Coated			Pound	12,610
Concrete Superstructure			Cu. Yds.	88.9

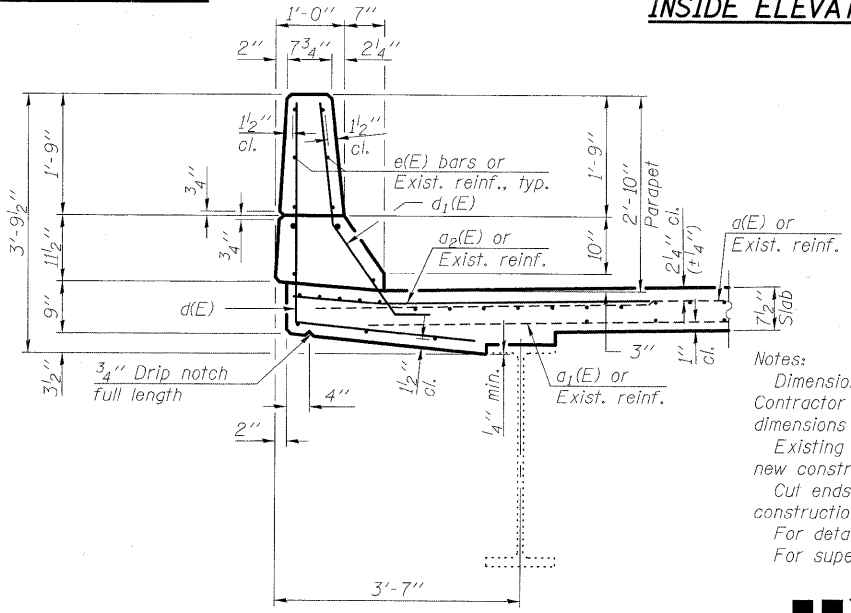
Bars indicated thus 3 x 3 - #8 etc. indicates
3 lines of bars with 3 lengths per line.



INSIDE ELEVATION OF PARAPET



SECTION A-A
(Horz. dim. at right L's)



SECTION THRU PARAPET

MINIMUM BAR LAP
#5 bar = 3'-0"
#8 bar = 6'-4"

Notes:
Dimensions are based on a Rolled Rail Strip Seal Joint. If the Contractor elects to use the Welded Rail Strip Seal Joint, deck dimensions may require adjustments to satisfy the details on sheet 7 of 14.
Existing reinforcement shall be cleaned and incorporated into the new construction. Cost included with Concrete Removal.
Cut ends of existing reinforcement bars extending into new construction to maintain 1/2" minimum clearance.
For details of Bar Splicers, see sheet 14 of 14.
For superstructure Concrete Removal details, see sheet 5 of 14.

**SUPERSTRUCTURE REPAIR DETAILS
STRUCTURE NO. 060-0012 (E.B.)
STRUCTURE NO. 060-0013 (W.B.)**

DESIGNED	EML
CHECKED	JJD
DRAWN	EML
CHECKED	JJD

**HORNER &
SHIFRIN, INC.
ENGINEERS**

SHEET NO. 6 14 SHEETS	F.A.I. RTE.	SECTION	COUNTY	TOTAL SHEETS	SHEET NO.
	70	60-(5,6,7)RS, 60-(6,7)BR	MADISON	185	120
FED. ROAD DIST. NO.			ILLINOIS FED. AID PROJECT		
CONTRACT NO. 76C56					