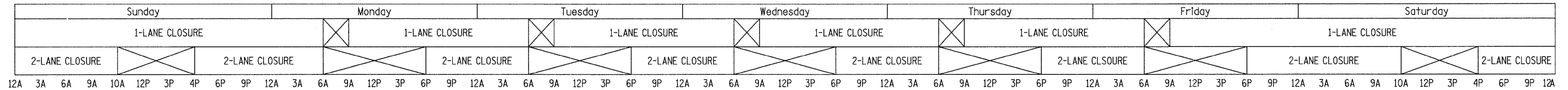
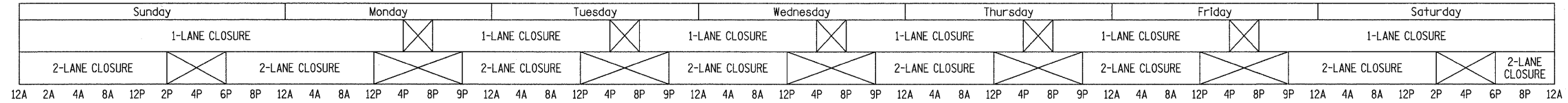


## WESTBOUND WORK SCHEDULE



## EASTBOUND WORK SCHEDULE



IT IS THE CONTRACTOR'S OPTION TO USE THE MATERIAL TRANSFER DEVICE (MTD). THE PAY ITEM FOR THE MTD WILL NOT BE INCLUDED IN THIS CONTRACT. THE QUANTITY IN THE SCHEDULES ARE "FOR INFORMATION ONLY".

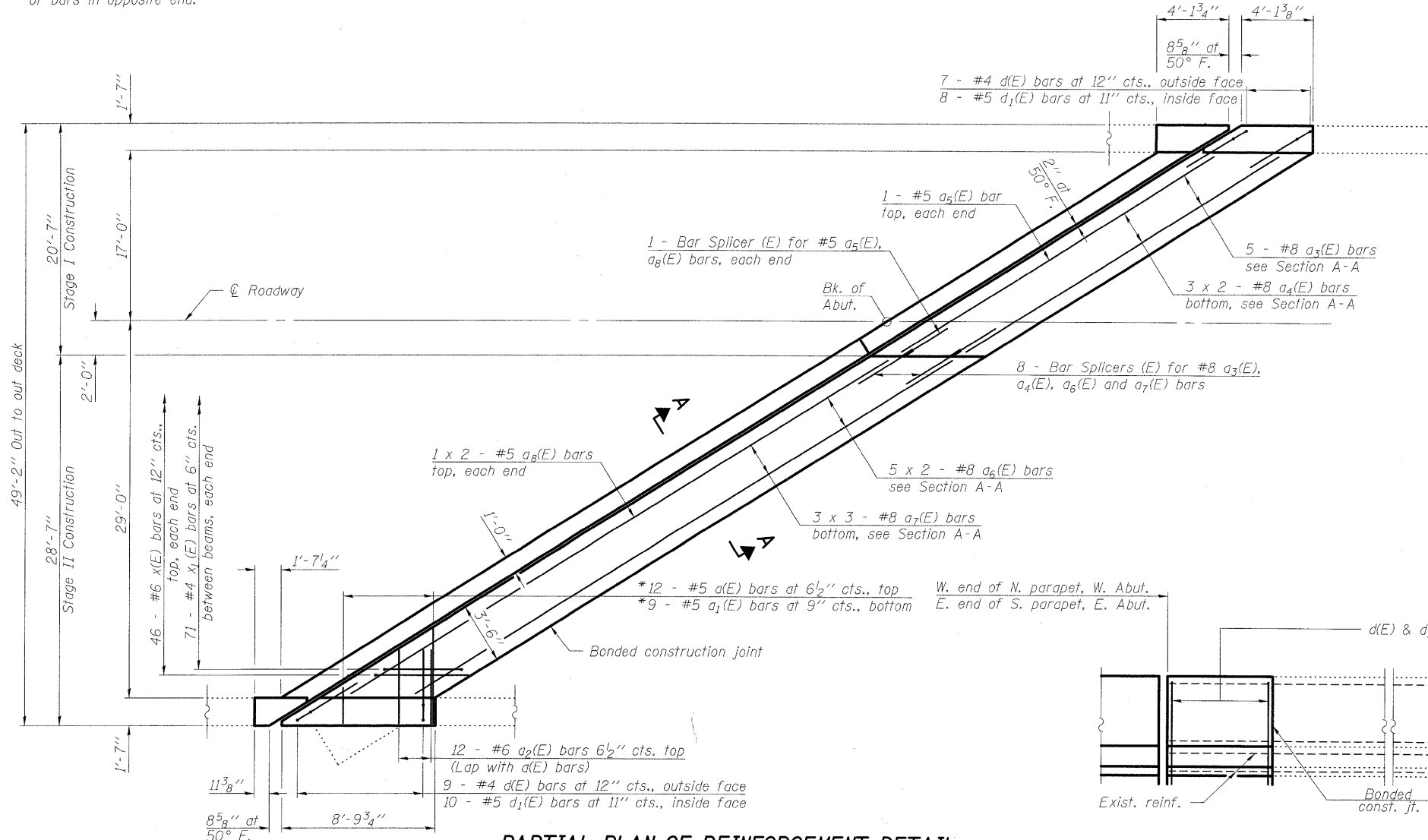
ALL MILLED AREAS SHALL BE RESURFACED WITH THE APPROPRIATE LEVEL BINDER OF BINDER COURSE PRIOR TO OPENING LANES TO TRAFFIC.

MOTORIST AID CALL BOX REMOVAL			
EASTBOUND		WESTBOUND	
MILE POST	EACH	MILE POST	EACH
9.56	1	9.63	1
11.66	1	10.23	1
12.26	1	10.61	1
		11.35	1
		11.61	1
<b>Sub-Totals</b>	<b>3</b>		<b>5</b>
<b>Total</b>		<b>8</b>	

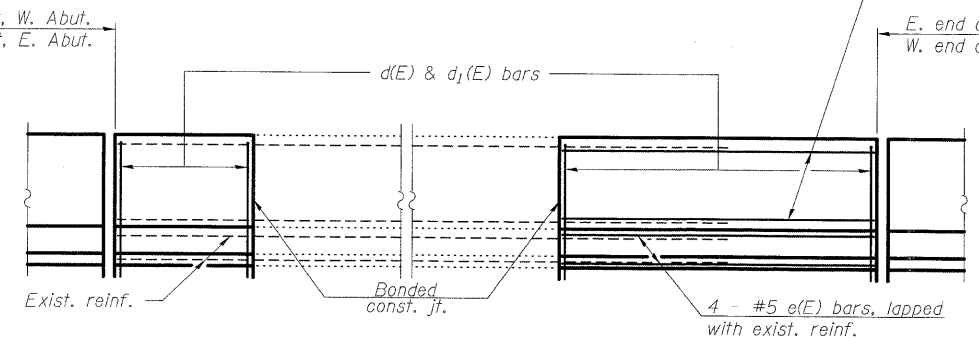
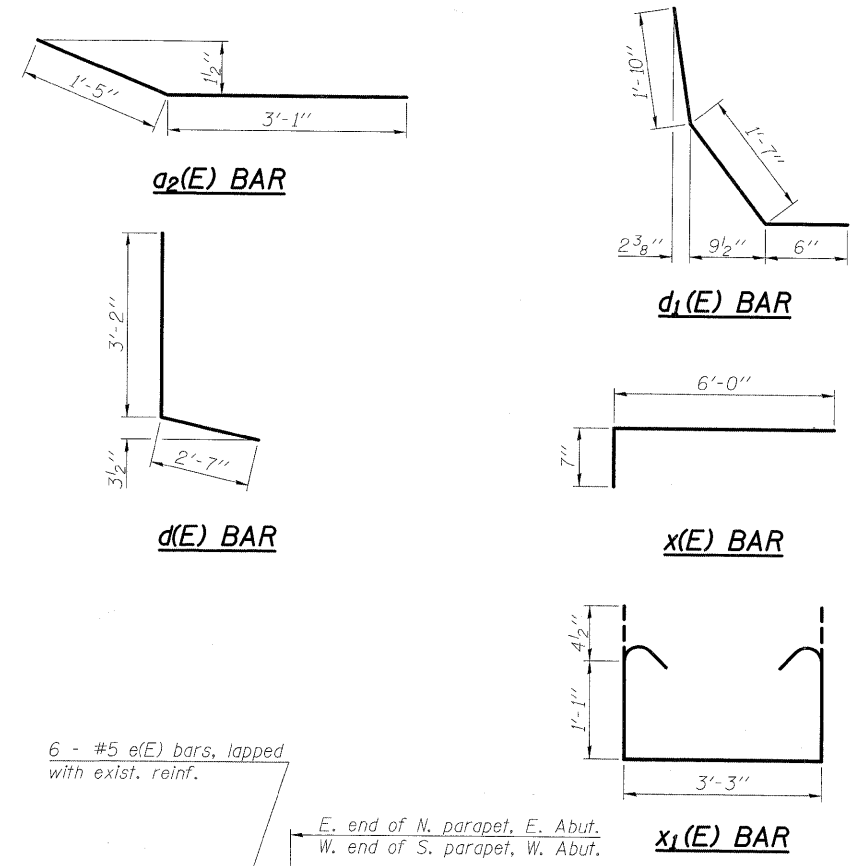
Rev. 12-21-09

\* Order a(E) & a<sub>1</sub>(E) bars full length.  
Cut to fit skew and use remainder  
of bars in opposite end.

STATE OF ILLINOIS  
DEPARTMENT OF TRANSPORTATION



**PARTIAL PLAN OF REINFORCEMENT DETAIL**

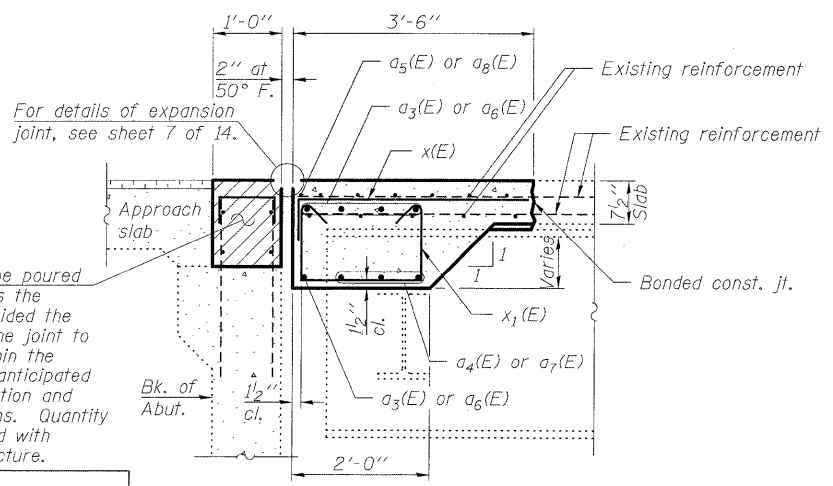


**INSIDE ELEVATION OF PARAPET**

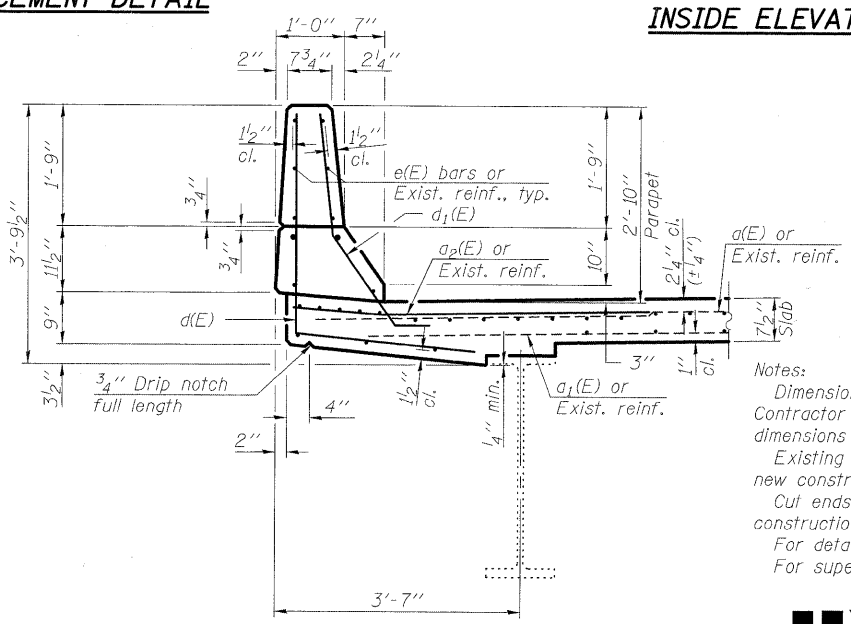
**SUPERSTRUCTURE  
BILL OF MATERIAL  
TWO STRUCTURES**

Bar	No.	Size	Length	Shape
a(E)	24	#5	6'-6"	—
a <sub>1</sub> (E)	18	#5	6'-5"	—
a <sub>2</sub> (E)	48	#6	4'-6"	—
a <sub>3</sub> (E)	20	#8	3'-8"	—
a <sub>4</sub> (E)	24	#8	18'-10"	—
a <sub>5</sub> (E)	4	#5	37'-8"	—
a <sub>6</sub> (E)	40	#8	28'-3"	—
a <sub>7</sub> (E)	36	#8	19'-9"	—
a <sub>8</sub> (E)	8	#5	28'-0"	—
d(E)	64	#4	5'-9"	—
d <sub>1</sub> (E)	72	#5	3'-11"	—
e(E)	40	#5	6'-3"	—
x(E)	184	#6	6'-7"	—
x <sub>1</sub> (E)	284	#4	6'-2"	—
Concrete Removal			Cu. Yds.	88.2
Reinforcement Bars, Epoxy Coated			Pound	12,610
Concrete Superstructure			Cu. Yds.	88.9

Bars indicated thus 3 x 3 - #8 etc. indicates  
3 lines of bars with 3 lengths per line.



**SECTION A-A**  
(Horz. dim. at right L's)



**SECTION THRU PARAPET**

**MINIMUM BAR LAP**  
#5 bar = 3'-0"  
#8 bar = 6'-4"

Notes:  
Dimensions are based on a Rolled Rail Strip Seal Joint. If the Contractor elects to use the Welded Rail Strip Seal Joint, deck dimensions may require adjustments to satisfy the details on sheet 7 of 14.  
Existing reinforcement shall be cleaned and incorporated into the new construction. Cost included with Concrete Removal.  
Cut ends of existing reinforcement bars extending into new construction to maintain 1/2" minimum clearance.  
For details of Bar Splicers, see sheet 14 of 14.  
For superstructure Concrete Removal details, see sheet 5 of 14.

**SUPERSTRUCTURE REPAIR DETAILS  
STRUCTURE NO. 060-0012 (E.B.)  
STRUCTURE NO. 060-0013 (W.B.)**

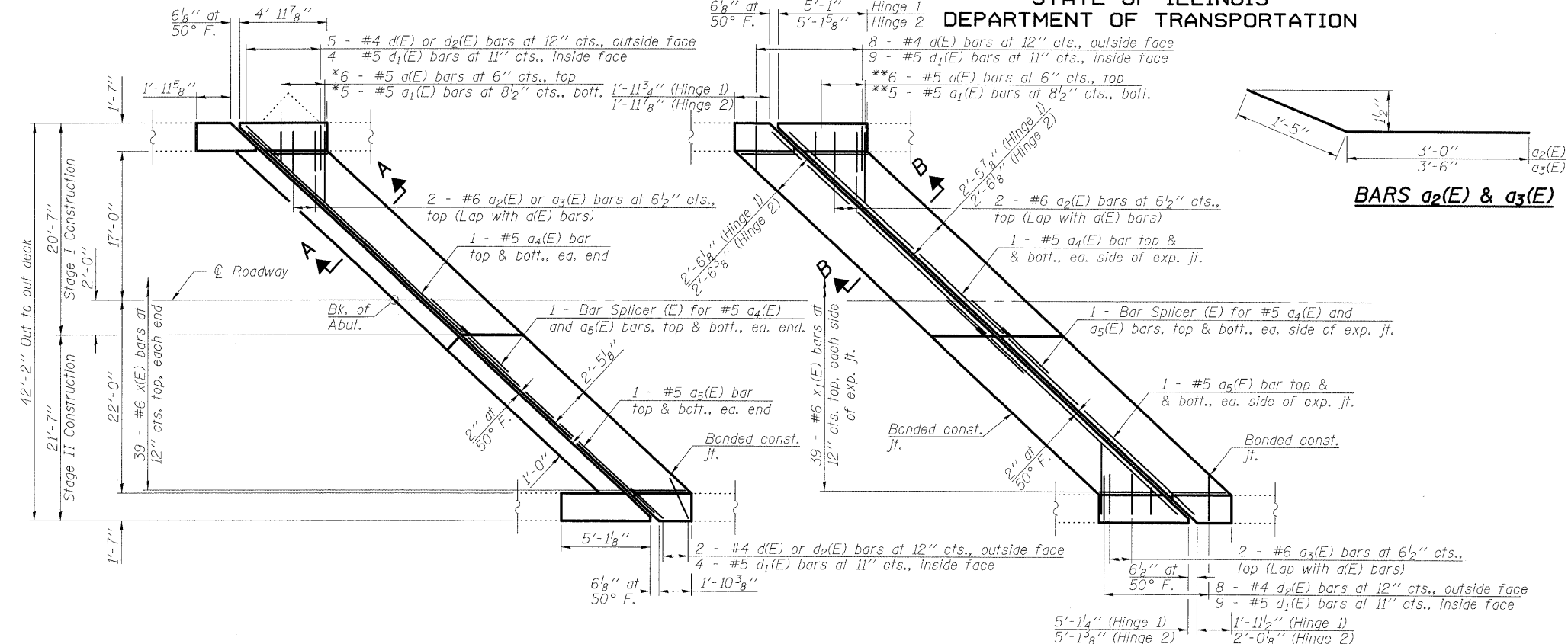
DESIGNED	EML
CHECKED	JJD
DRAWN	EML
CHECKED	JJD

**HORNER &  
SHIFRIN, INC.  
ENGINEERS**

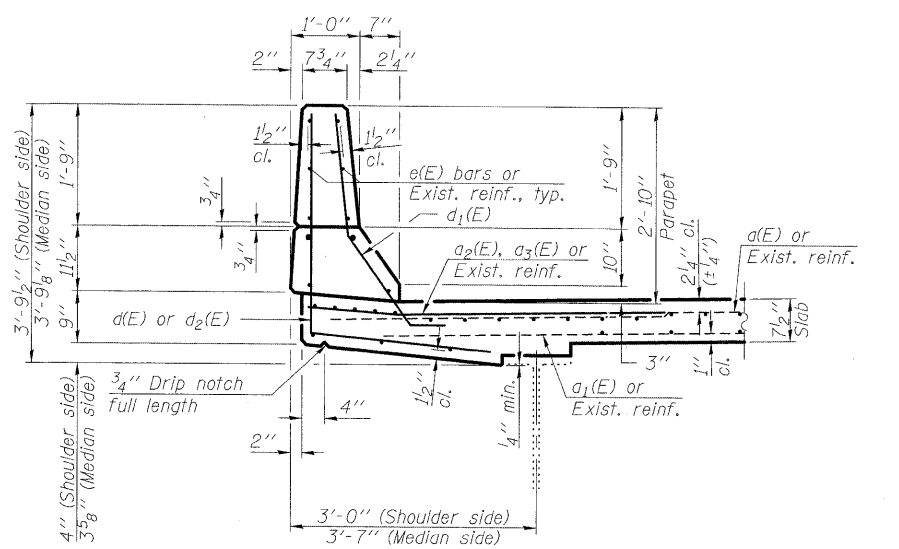
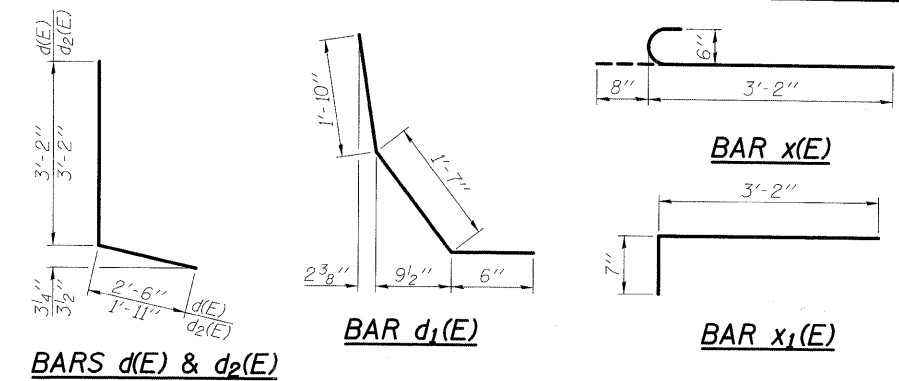
SHEET NO. 6 14 SHEETS	F.A.I. RTE.	SECTION	COUNTY	TOTAL SHEETS	SHEET NO.
	70	60-(5,6,7)RS, 60-(6,7)BR	MADISON	185	120
FED. ROAD DIST. NO.			ILLINOIS FED. AID PROJECT		
CONTRACT NO. 76C56					

STATE OF ILLINOIS  
DEPARTMENT OF TRANSPORTATION

\* Order d(E) & a<sub>1</sub>(E) bars full length. Cut to fit skew and use remainder of bars in opposite end.  
\*\* Order d(E) & a<sub>1</sub>(E) bars full length. Cut to fit skew and use remainder of bars on other side of exp. jt.

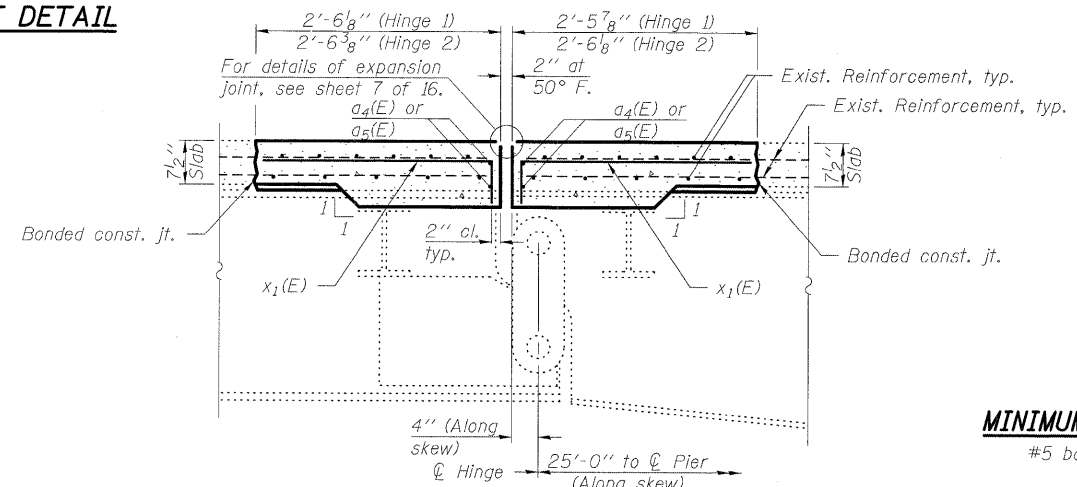
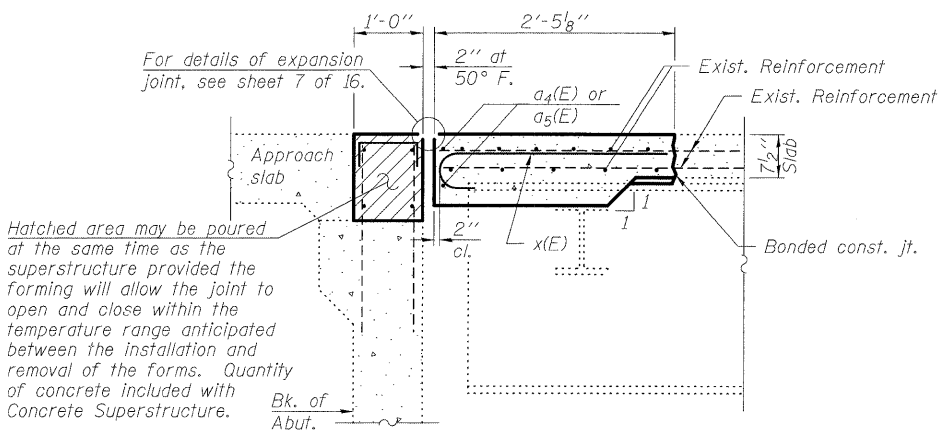


**PARTIAL PLAN OF REINFORCEMENT DETAIL**

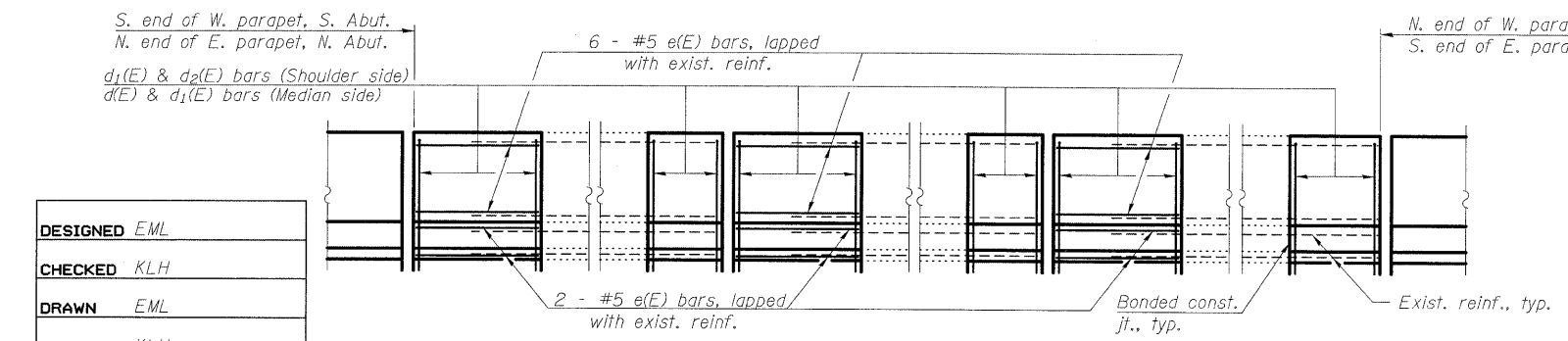


**SUPERSTRUCTURE  
BILL OF MATERIAL  
TWO STRUCTURES**

Bar	No.	Size	Length	Shape
a(E)	36	#5	5'-8"	—
a <sub>1</sub> (E)	30	#5	5'-6"	—
a <sub>2</sub> (E)	12	#6	4'-5"	—
a <sub>3</sub> (E)	12	#6	4'-11"	—
a <sub>4</sub> (E)	24	#5	27'-0"	—
a <sub>5</sub> (E)	24	#5	28'-0"	—
d(E)	46	#4	5'-8"	—
d <sub>1</sub> (E)	104	#5	3'-11"	—
d <sub>2</sub> (E)	46	#4	5'-1"	—
e(E)	120	#5	3'-4"	—
x(E)	156	#6	3'-10"	—
x <sub>1</sub> (E)	312	#6	3'-9"	—
Concrete Removal		Cu. Yds.	87.3	
Reinforcement Bars, Epoxy Coated		Pound	5,770	
Concrete Superstructure		Cu. Yds.	87.1	
Bar Splicers		Each	40	



**MINIMUM BAR LAP**  
#5 bar = 3'-0"



DESIGNED	EML
CHECKED	KLH
DRAWN	EML
CHECKED	KLH

**Notes:**  
Dimensions are based on a Rolled Rail Strip Seal Joint. If the Contractor elects to use the Welded Rail Strip Seal Joint, deck dimensions may require adjustments to satisfy the details on sheet 7 of 16.  
Existing reinforcement shall be cleaned and incorporated into the new construction. Cost included with Concrete Removal.  
Cut ends of existing reinforcement bars extending into new construction to maintain 1/2" minimum clearance.  
For details of Bar Splicers, see sheet 16 of 16.  
For superstructure Concrete Removal details, see sheet 5 of 16.

**SUPERSTRUCTURE REPAIR DETAILS  
STRUCTURE NO. 060-0014 (E.B.)  
STRUCTURE NO. 060-0015 (W.B.)**



SHEET NO. 6 16 SHEETS	F.A.I. RTE.	SECTION	COUNTY	TOTAL SHEETS	SHEET NO.
	70	60-(6,7)BR	MADISON	185	134
FED. ROAD DIST. NO.			ILLINOIS FED. AID PROJECT		
CONTRACT NO. 76C56					