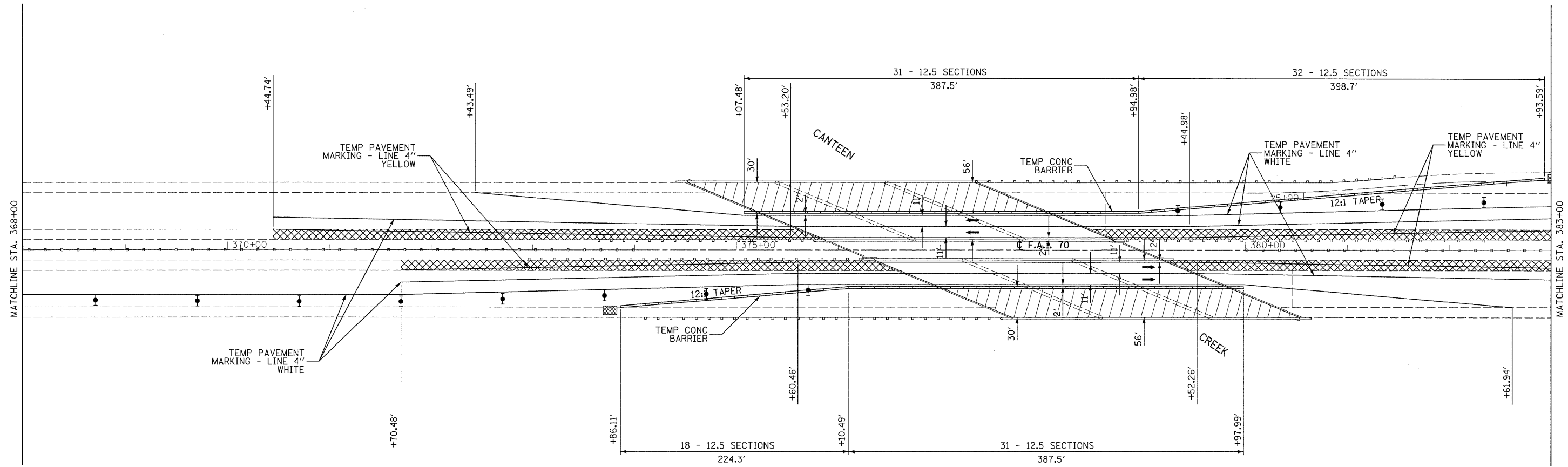


**TRAFFIC CONTROL STAGE II**

1. RELOCATE TRAFFIC CONTROL FOR STAGE II AND SHIFT TRAFFIC AS SHOWN AND USING THE APPLICABLE PORTIONS OF THE HIGHWAY STANDARDS USED.
2. HIGHWAY STANDARDS USED:  
701400, 701402, 701411
3. TRAFFIC CONTROL DETAILS (SIGNS, PAVEMENT MARKINGS, ETC) NOT SHOWN IN THESE STAGE CONSTRUCTION DETAILS SHALL BE AS PER THE HIGHWAY STANDARDS LISTED IN #2.

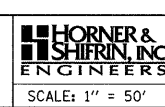


- ↑ ARROW BOARD
- ⊥ SIGN
- ↑ DIRECTION INDICATOR BARRICADE WITH STEADY BURN MONODIRECTIONAL LIGHT
- ⊥ TYPE II BARRICADE, DRUM, OR VERTICAL BARRICADE WITH STEADY BURN MONODIRECTIONAL LIGHT
- ▨ IMPACT ATTENUATOR
- ▨ HOT-MIX ASPHALT SHOULDER REMOVAL WITH PORTLAND CEMENT CONCRETE SHOULDERS 12"

LAST SAVED = 9/11/2009  
 PEN TABLE = VB.tbl  
 PLOT DRIVER = TR-Verox6204-TopFile.plt

FILE NAME =	USER NAME = sdonahue	DESIGNED -	REVISED -
\\020090\work_order_3\aed\plans\087656-Sht-Staging-CanteenCreek-StageII-02.dgn		DRAWN -	REVISED -
PLOT SCALE = 50.0023 / IN.		CHECKED -	REVISED -
PLOT DATE = 9/16/2009 8:52:30 PM		DATE -	REVISED -

**STATE OF ILLINOIS**  
**DEPARTMENT OF TRANSPORTATION**



**STAGE CONSTRUCTION DETAILS**  
 I-55/70 STRUCTURES OVER CANTEN CREEK  
 STAGE II

SCALE: 1" = 50'

F.A.I. RTE.	SECTION	COUNTY	TOTAL SHEETS	SHEET NO.
70	60-(5,6,7)RS, 60-(6,7)BR	MADISON	185	46
CONTRACT NO. 76C56				
FED. ROAD DIST. NO.		ILLINOIS FED. AID PROJECT		

SHEET NO. 2 OF 4 SHEETS STA. 368+00 TO STA. 383+00